



**Central Water Commission
KRISHNA GODAVARI BASIN ORGANISATION
LOWER GODAVARI DIVISION**

303, Krishna Godavari
Bhawan
11-4-648, A.C.Guards
Hyderabad-500004
Ph:040-29808752

**Daily Flood Situation Report cum Advisories
20.09.2019**

1.0 Rainfall Situation

Chief Amount of rainfall recorded at 08:30 hours IST of today (5cm or more) as per IMD

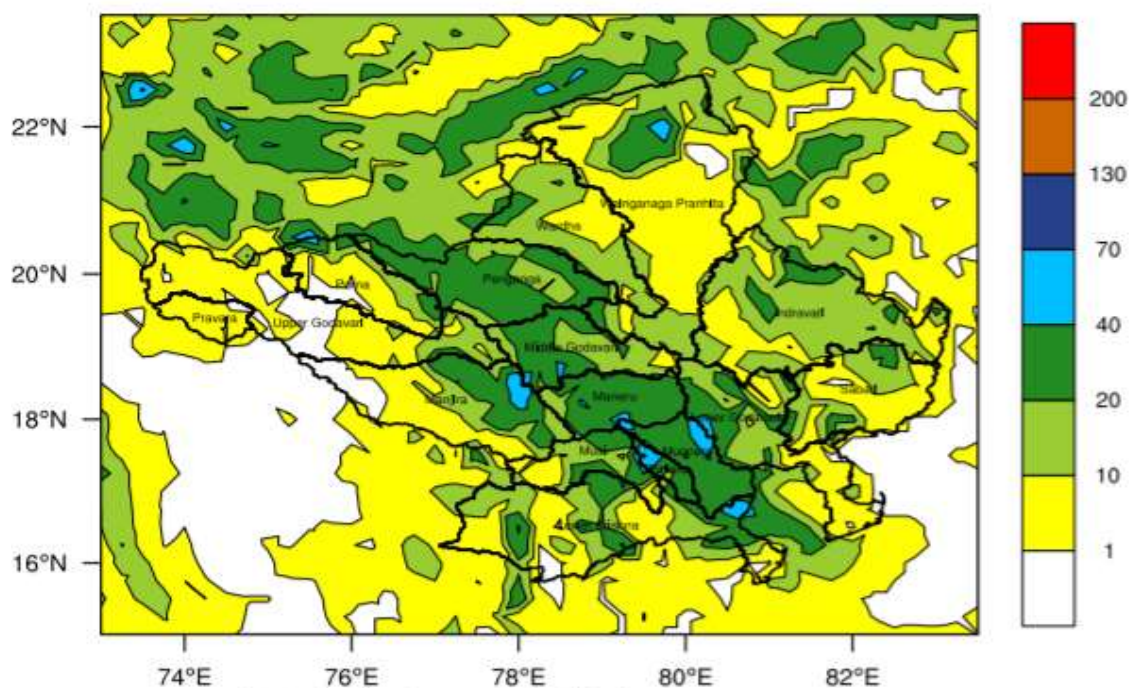
SUKMA(CG); KONTA(CG)	7
KANNAD(MH); MANPUR(MP)	6
KERAMERI(TG); SINNAR(MH); SAIGAON(MH); GANDHARI(TG); BHANUPRATAPPUR(CG)	5

1.1 Rainfall Forecst foe next 2 days issued on 20th September 2019by IMD

FLOOD MET OFFICE, HYDERABAD

IMD GFS Rainfall(mm) Forecast (24hr)

Day 1 FCST valid for: 21.09.2019 TILL 08:30 IST



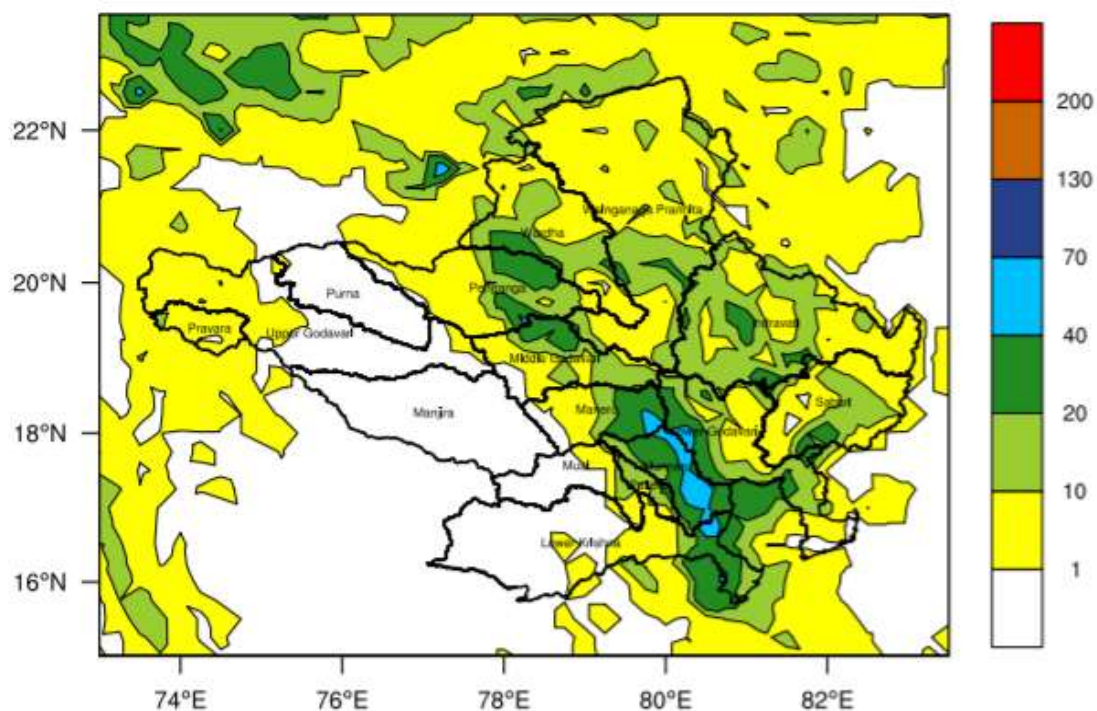
Sub basin wise Average Rainfall Estimation

Indravati = 13 mm	Palleru = 36 mm
Lower Godavari = 14 mm	Penganga = 22 mm
Lower Krishna = 13 mm	Pravara = 3 mm
Maneru = 29 mm	Purna = 9 mm
Manjira = 14 mm	Sabari = 11 mm
Middle Godavari = 21 mm	Upper Godavari = 5 mm
Munneru = 34 mm	Wainganaga/Pranhita = 11 mm
Musi = 17 mm	Wardha = 13 mm

FLOOD MET OFFICE, HYDERABAD

IMD GFS Rainfall(mm) Forecast (48hr)

Day 2 FCST valid for: 22.09.2019 TILL 08:30 IST



Sub basin wise Average Rainfall Estimation

Indravati = 12 mm	Palleru = 15 mm
Lower Godavari = 14 mm	Penganga = 12 mm
Lower Krishna = 5 mm	Pravara = 5 mm
Maneru = 16 mm	Purna = 0 mm
Manjira = 0 mm	Sabari = 10 mm
Middle Godavari = 11 mm	Upper Godavari = 2 mm
Munneru = 34 mm	Wainganga/Pranhita = 8 mm
Must = 3 mm	Wardha = 10 mm

Heavy Rainfall warning for next two days

NAME OF THE BASIN/SUB BASIN	Day_1	Day_2
GODAVARI/ UPPER GODAVARI(G1)	ISOLATED HEAVY RAIN	NIL
GODAVARI/PRAVARA(G2)	ISOLATED HEAVY RAIN	NIL
GODAVARI/PURNA(G3)	ISOLATED HEAVY RAIN	NIL
GODAVARI/MANJIRA(G4)	ISOLATED HEAVY RAIN	NIL
GODAVARI/MIDDLE GODAVARI(G5)	ISOLATED HEAVY RAIN	NIL
GODAVARI/MANERU(G6)	ISOLATED HEAVY RAIN	NIL
GODAVARI/PENGANGA(G7)	NIL	NIL
GODAVARI/WARDHA(G8)	NIL	NIL
GODAVARI/WAINGANGA(G9)	NIL	NIL
GODAVARI/LOWER GODAVARI(G10)	ISOLATED HEAVY RAIN	NIL
GODAVARI/INDRAVATHI(G11)	ISOLATED HEAVY RAIN	NIL
GODAVARI/SABARI(G12)	NIL	NIL

GFS Rainfall Forecast For Next Two Days			
1).Dry (No Rain)		2). Light Rain (<1 cm.)	3). Moderate Rain (2to 6 cm.)
4). Heavy rain (7 to 11 cm.)		5). Very Heavy rain (12 to 20 cm	6). Extremely Heavy rain (21 or More)
S.No	Catchments	Day-01	Day-02
1	GODAVARI/ UPPER GODAVARI(G1)	Moderate Rain	Moderate Rain
2	GODAVARI/PRAVARA(G2)	Moderate Rain	Moderate Rain
3	GODAVARI/PURNA(G3)	Heavy rain	Dry (No Rain)
4	GODAVARI/MANJIRA(G4)	Very Heavy rain	Dry (No Rain)
5	GODAVARI/MIDDLE GODAVARI(G5)	Extremely Heavy rain	Heavy rain
6	GODAVARI/MANERU(G6)	Extremely Heavy rain	Very Heavy rain
7	GODAVARI/PENGANGA(G7)	Extremely Heavy rain	Very Heavy rain
8	GODAVARI/WARDHA(G8)	Very Heavy rain	Heavy rain
9	GODAVARI/WAINGANGA(G9)	Heavy rain	Heavy rain
10	GODAVARI/LOWER GODAVARI(G10)	Very Heavy rain	Very Heavy rain
11	GODAVARI/INDRAVATHI(G11)	Very Heavy rain	Very Heavy rain
12	GODAVARI/SABARI(G12)	Heavy rain	Heavy rain

CWC Inference:- Extremely Heavy Rain to Moderate rain is predicted in entire Godavari basin for next two days and no rain in Purna and Manjira Sub basins on Day2. So some rainfall activity is expected in entire Godavari Basin. No flood situation likely for sites down stream of Kaleswaram during next two days.

FLOOD SITUATION SUMMARY		
PART - I: LEVEL FORECAST		
S.No	Flood Situations	Numbers of Forecasting Sites
A	Extreme Flood Situation: (Site (s) where the previous Highest Flood Level (HFL) is exceeded or equalled)	NIL
B	Severe Flood Situation: (Site (s) where water level is touching or exceeding the Danger Level but below Highest Flood Level (HFL))	NIL
C	Above Normal Flood Situation: (Site (s) where water level is touching or exceeding the Warning Level but below Danger Level)	NIL
Total number of sites above Warning Level (A+B+C)		NIL
PART - II: INFLOW FORECAST		
Number of sites for which inflow forecasts issued: (Where Inflows are equal or exceed the specified Threshold Limit for a particular reservoir / barrage		NIL

2.0.1 Above Normal

River	District	Warning Level (M)	Danger Level (M)	Highest flood Level (M)	Forecasted Level
					Trend
Station	State			Date	Date
					Time

2.0.2 Severe Flood Situation

River	District	Warning Level (M)	Danger Level (M)	Highest flood Level (M)	Forecasted Level
					Trend
Station	State			Date	Date
					Time

2.0.3 Reservoir/Barrage receiving Inflow more the Threshold Limit

Name of River/	District/	FRL(feet)	Actual Levels			Forecast			
Station	State		Level(ft)	Time	Trend	Average (Cum)	Trend	Date	Time