



**CENTRAL WATER COMMISSION
KRISHNA GODAVARI BASIN ORGANISATION
LOWER GODAVARI DIVISION**

303, Krishna Godavari Bhawan
11-4-648, A.C.Guards
Hyderabad-500004
Ph:040-29808752

Daily Flood Situation Report cum Advisories
30.06.2020

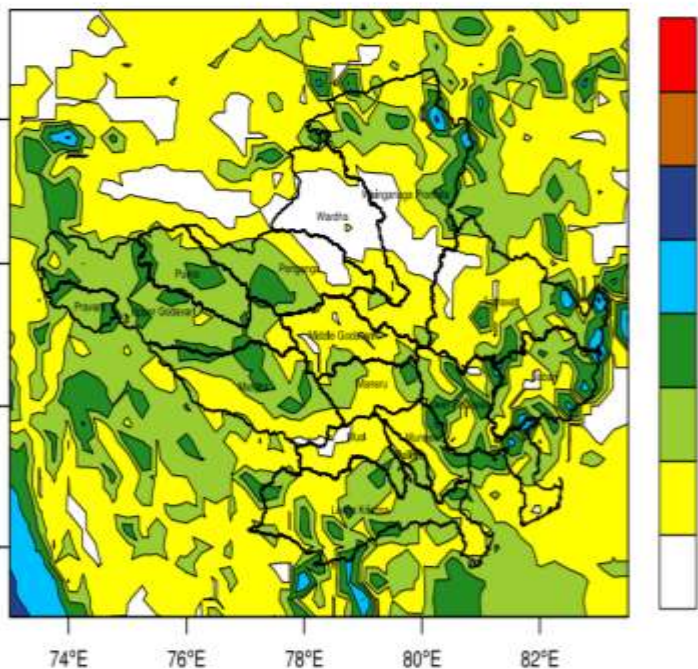
1.0 Rainfall Situation Chief Amount of rainfall recorded at 08:30 hours IST of today (5cm or more) as per IMD

Name of Place (State)	Rainfall (in cm)
MULAKALAPALLE(TS)	14
AMBAD(MH), YACHARAM(MH)	10
SAUSAR(MP)	08
N.M.D.WEIR(MH), SADASIVANAGAR(TS), DUMMUGUEDEM(TS)	07
KAIJ(MH), WASHI(MH), ASHTI(MH), NANDGAONKAZI(MH), RAMAKONA(MP)	06
NASHIK(MH), TALAMADUGU(TS), TADWAI(TS), MALANJKHAND(MP), TANUKU(TS)	05

1.1 Rainfall Forecast for next 2 days issued on 30th June 2020 by IMD

FLOOD MET OFFICE, HYDERABAD

IMD GFS Rainfall(mm) Forecast (24hr) Day 1 FCST valid for: 01.07.2020 TILL 08:30 IST

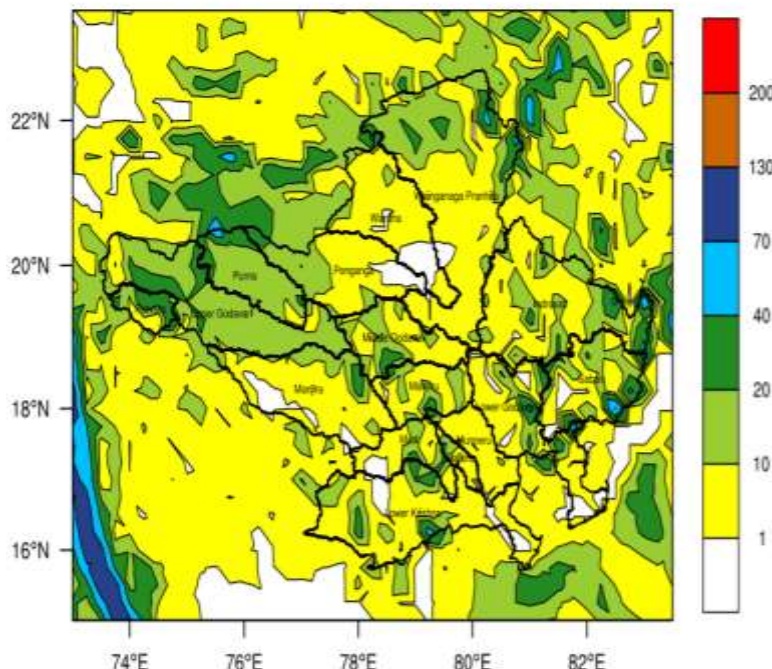


Sub basin wise Average Rainfall Estimation

Indravati = 12 mm	Palleru = 10 mm
Lower Godavari = 14 mm	Penganga = 11 mm
Lower Krishna = 12 mm	Pravara = 19 mm
Maneru = 11 mm	Purna = 17 mm
Marla = 13 mm	Sabari = 16 mm
Middle Godavari = 5 mm	Upper Godavari = 16 mm
Munneru = 13 mm	Wanganga/Pranhita = 10 mm
Musi = 5 mm	Wardha = 2 mm

FLOOD MET OFFICE, HYDERABAD

IMD GFS Rainfall(mm) Forecast (48hr) Day 2 FCST valid for: 02.07.2020 TILL 08:30 IST



Sub basin wise Average Rainfall Estimation

Indravati = 11 mm	Palleru = 8 mm
Lower Godavari = 9 mm	Penganga = 7 mm
Lower Krishna = 8 mm	Pravara = 19 mm
Maneru = 11 mm	Purna = 17 mm
Marla = 7 mm	Sabari = 13 mm
Middle Godavari = 9 mm	Upper Godavari = 15 mm
Munneru = 4 mm	Wanganga/Pranhita = 10 mm
Musi = 6 mm	Wardha = 4 mm

1.2 Heavy Rainfall warning for next two days

GFS Rainfall Forecast For Next Two Days in mm				
Dry (No Rain)		Very Light rain(<10)	Light Rain (10 to 19)	Moderate Rain (20 to 40)
Heavy rain (41 to 69)		Very Heavy rain(70 to 130)	Extremely Heavy rain (130 to 199)	Exceptionally Heavy (200 or above)
S.No	Catchments	Day-01	Day-02	
1	GODAVARI/ UPPER GODAVARI(G1)	Light Rain	Light Rain	
2	GODAVARI/PRAVARA(G2)	Light Rain	Light Rain	
3	GODAVARI/PURNA(G3)	Light Rain	Light Rain	
4	GODAVARI/MANJIRA(G4)	Light Rain	Very Light rain	
5	GODAVARI/MIDDLE GODAVARI(G5)	Very Light rain	Very Light rain	
6	GODAVARI/MANERU(G6)	Light Rain	Light Rain	
7	GODAVARI/PENGANGA(G7)	Light Rain	Very Light rain	
8	GODAVARI/WARDHA(G8)	Very Light rain	Very Light rain	
9	GODAVARI/WAINGANGA(G9)	Light Rain	Light Rain	
10	GODAVARI/LOWER GODAVARI(G10)	Light Rain	Very Light rain	
11	GODAVARI/INDRAVATI(G11)	Light Rain	Light Rain	
12	GODAVARI/SABARI(G12)	Light rain	Light Rain	

CWC Inference:- Heavy Rainfall warning as received from IMD is given above. On Day 1 Light Rain to Very Light Rain is predicted in Godavari Basin and on Day 2 Light Rain to Very Light Rain is predicted in Godavari Basin. No flood situation in Godavari Basin during next two days.

FLOOD SITUATION SUMMARY		
PART - I: LEVEL FORECAST		
S.NO.	Flood Situations	Numbers of Forecasting Sites
A	Extreme Flood Situation: (Site (s) where the previous Highest Flood Level (HFL) is exceeded or equalled)	NIL
B	Severe Flood Situation: (Site (s) where water level is touching or exceeding the Danger Level but below Highest Flood Level (HFL))	NIL
C	Above Normal Flood Situation: (Site (s) where water level is touching or exceeding the Warning Level but below Danger Level)	NIL
Total number of sites above Warning Level (A+B+C)		NIL
PART - II: INFLOW FORECAST		
Number of sites for which inflow forecasts issued: (Where Inflows are equal or exceed the specified Threshold Limit for a particular reservoir / barrage)		NIL

2.0.1 Above Normal

River	District	Warning Level (M)	Danger Level (M)	Highest flood Level (M)	Forecasted Level
					Trend
Station	State			Date	Date
					Time

2.0.2 Severe Flood Situation

River	District	Warning Level (M)	Danger Level (M)	Highest flood Level (M)	Forecasted Level
					Trend
Station	State			Date	Date

2.0.3 Extreme Flood Situation:

River	District	Warning Level (M)	Danger Level (M)	Highest flood Level (M)	Forecasted Level
					Trend
Station	State			Date	
				Time	

2.0.4 Reservoir/Barrage receiving Inflow more the Threshold Limit

[illegible]