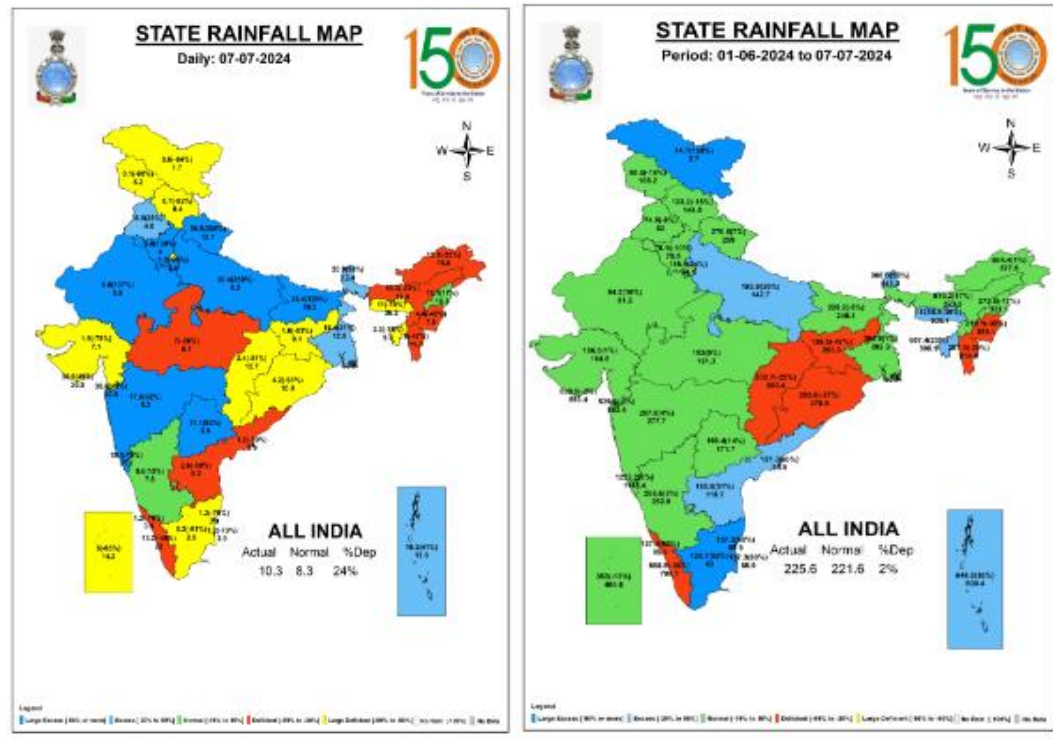




Central Water Commission
Daily Flood Situation Report cum Advisories
07-07-2024

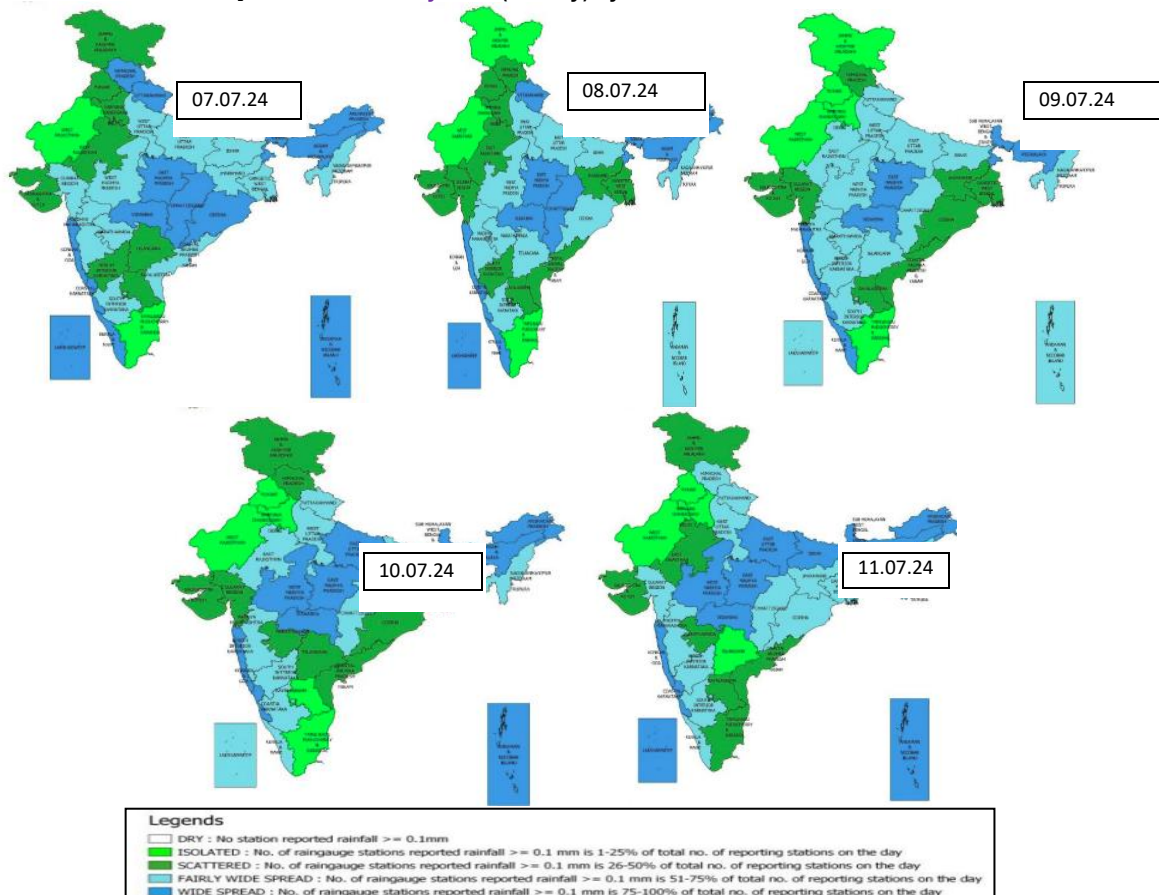
1.0 Rainfall Situation

1.1 Statewise departure from normal of cumulative and daily rainfall



NOTES :
 a) RainFall figures are based on operation data.
 b) Small figures indicate actual rainfall (mm), while bold figures indicate Normal rainfall (mm).
 c) Percentage Departures of rainfall are shown in brackets.

1.2 Rainfall forecast for next 5 days issued on 7th July 2024 (Midday) by IMD



2.0 Flood Situation and Advisories

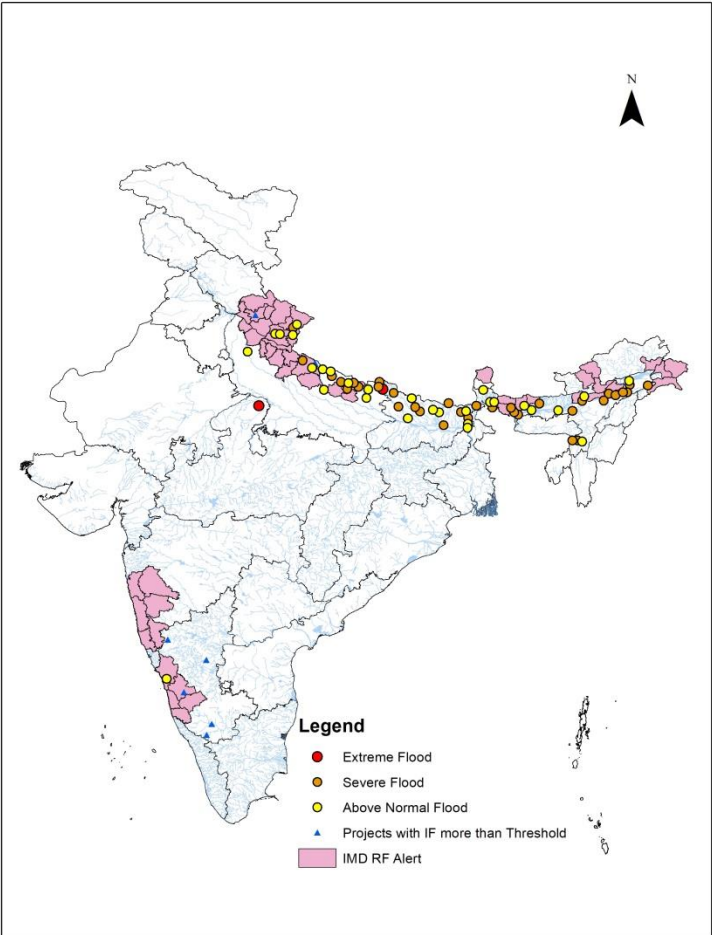
2.1 Summary of Flood Situation as per CWC Flood Forecasting Network

On 07th July 2024, 23 Stations (13 in Assam and 07 in Bihar 01 in Uttar Pradesh and 02 in West Bengal) are flowing in Severe Flood Situation, 19 Stations (06 in Assam, 05 in Bihar, 02 in West Bengal and 05 in Uttar Pradesh & 01 in Sikkim) are flowing in Above Normal Flood Situation. Inflow Forecast has been issued for 08 Dams and Barrages (05 in Karnataka and 02 in Uttar Pradesh and 01 in Uttarakhand)

FLOOD SITUATION SUMMARY			
PART - I: LEVEL FORECAST		(Total Sites - 200)	
S.No.	Flood Situations	State-wise Flood Situation	Numbers of Forecasting Sites
A	Extreme Flood Situation: (Site (s) where the previous Highest Flood Level (HFL) is exceeded or equalled)		0
B	Severe Flood Situation: (Site (s) where water level is touching or exceeding the Danger Level but below Highest Flood Level (HFL))	Assam(13), Bihar(7), Uttar Pradesh(1), West Bengal(2)	23
C	Above Normal Flood Situation: (Site (s) where water level is touching or exceeding the Warning Level but below Danger Level)	Assam(6), Bihar(5), Sikkim(1), Uttar Pradesh(5), West Bengal(2)	19
Total number of sites above Warning Level (A+B+C)			42
PART - II: INFLOW FORECAST		(Total Sites - 138)	
Number of sites for which inflow forecasts issued: (Where Inflows are equal or exceed the specified Threshold Limit for a particular reservoir / barrage)		Karnataka(5), Uttar Pradesh(2), Uttarakhand(1)	8

Details are given at link: https://cwc.gov.in/sites/default/files/cfrcwcdfb-07.07.2024_5.pdf

Flood Situation Map



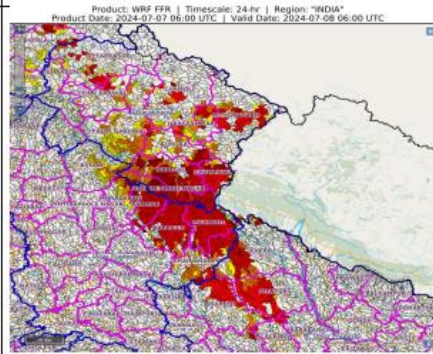
2.2 Flash Flood Guidance

24 hours Outlook for the Flash Flood Risk (FFR) till 1130 IST of 08-07-2024 :

High flash flood risk likely over few watersheds & neighbourhoods of **Uttarakhand** and **adjoining West Uttar Pradesh** Met Sub-divisions during next 24 hours.

Moderate to High flash flood risk likely over few watersheds & neighbourhoods of **Western parts of East Uttar Pradesh** Met Sub-divisions during next 24 hours.

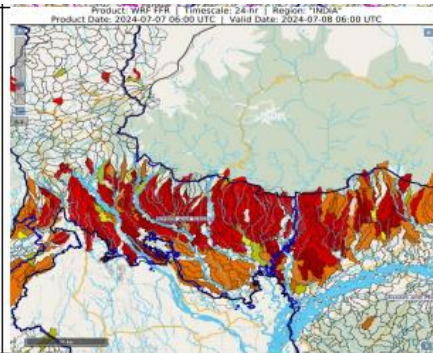
Surface runoff/ Inundation may occur at some fully saturated soils & low-lying areas over AoC as shown in map due to expected rainfall occurrence in next 24 hours.



24 hours Outlook for the Flash Flood Risk (FFR) till 1130 IST of 08-07-2024 :

Low to Moderate flash flood risk likely over few watersheds & neighbourhoods of **SHWB & Sikkim** and **adjoining Assam & Meghalaya** Met Sub-divisions during next 24 hours.

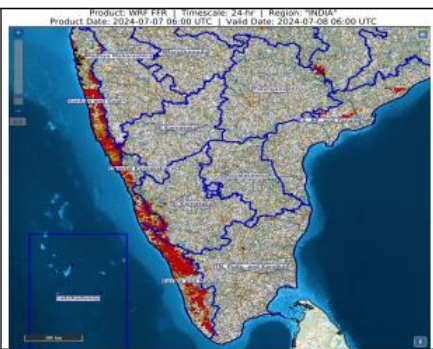
Surface runoff/ Inundation may occur at some fully saturated soils & low-lying areas over AoC as shown in map due to expected rainfall occurrence in next 24 hours.



24 hours Outlook for the Flash Flood Risk (FFR) till 1130 IST of 08-07-2024 :

Low to Moderate flash flood risk likely over few watersheds & neighbourhoods of **Konkan & Goa, Coastal Karnataka and Kerala & Mahe** Met Sub-divisions during next 24 hours.

Surface runoff/ Inundation may occur at some fully saturated soils & low-lying areas over AoC as shown in map due to expected rainfall occurrence in next 24 hours.

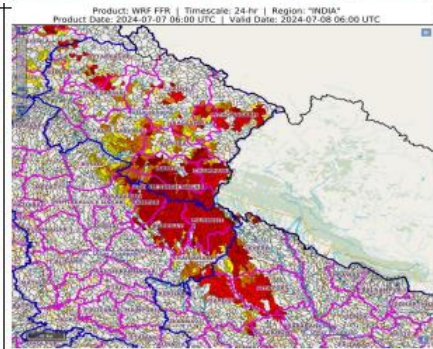


24 hours Outlook for the Flash Flood Risk (FFR) till 1130 IST of 08-07-2024 :

High flash flood risk likely over few watersheds & neighbourhoods of **Uttarakhand** and **adjoining West Uttar Pradesh** Met Sub-divisions during next 24 hours.

Moderate to High flash flood risk likely over few watersheds & neighbourhoods of **Western parts of East Uttar Pradesh** Met Sub-divisions during next 24 hours.

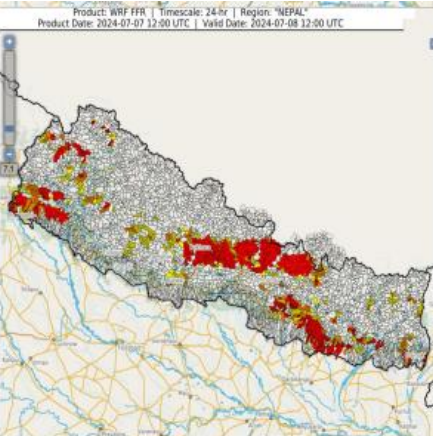
Surface runoff/ Inundation may occur at some fully saturated soils & low-lying areas over AoC as shown in map due to expected rainfall occurrence in next 24 hours.



24 hours Flash Flood Risk Outlook till 1200 UTC of 08.07.2024:

Moderate to high flash flood risk likely over few watersheds and neighborhoods of **Nepal** during next 24 hours.

Surface runoff/ Inundation may occur at some fully saturated soils & low-lying areas over AoC as shown in map due to expected rainfall occurrence in next 24 hours.



2.3 CWC Advisories

Main Synoptic Feature:

1. Isolated very heavy rainfall also likely over Uttar Pradesh on 07th, 10th & 11th July.
2. Isolated extremely heavy rainfall very likely over Uttarakhand today, the 07th July.
3. Isolated very heavy rainfall also likely over Odisha on 07th; Bihar during 09th-11th; Nagaland on 08th; Arunachal Pradesh during 08th-10th; Assam & Meghalaya on 08th & 09th July; SubHimalayan West Bengal & Sikkim during next 5 days.
4. Isolated very heavy rainfall also very likely over South Interior Karnataka on 07th; Ghat areas of Madhya Maharashtra on 07th & 08th; Konkan & Goa on 08th; Coastal Karnataka during 07th, 08th, 10th & 11th July.

5. Isolated extremely heavy rainfall also very likely over Konkan & Goa on 07th July.

Assam

Water level of rivers of lower Brahmaputra, Middle and Upper Brahmaputra are likely to be in steady to falling conditions except in river Subansiri. The flood situations in below mentioned rivers are likely to continue for next 24 hours. Current flood situation in the state as per CWC network is as follows:

CWC Site	River	District	Flood Type	Trend in Water Level
Badarpurghat	Barak	Karimganj	Severe	Falling
Badatighat	Subansiri	Lakhimpur	Severe	Rising
Beki Rd Bridge	Beki	Barpeta	Severe	Falling
Chenimari	Buridehing	Dibrugarh	Severe	Rising
Dharamtul	Kopili	Marigaon	Severe	Falling
Dhubri	Brahmaputra	Dhubri	Severe	Falling
Golokganj	Sankosh	Dhubri	Severe	Falling
Karimganj	Kushiyara	Karimganj	Severe	Falling
Nanglamoraghat	Desang	Sivasagar	Severe	Steady
Numaligarh	Dhansiri(S)	Golaghat	Severe	Steady
Neamatighat	Brahmaputra	Jorhat	Severe	Falling
Sivasagar	Dikhow	Sivasagar	Severe	Falling
Tezpur	Brahmaputra	Sonitpur	Severe	steady
Goalpara	Brahmaputra	Goalpara	Above Normal	Steady
Dibrugarh	Brahmaputra	Dibrugarh	Above Normal	Steady
Annapurnghat	Barak	Cachar	Above Normal	Falling
Guwahati(DC Court)	Brahmaputra	Kamrup	Above Normal	Steady
Kokrajhar	Gaurang	Kokrajhar	Above Normal	Falling
NT Rd crossing JiaBharali	Jiabharali	Sonitpur	Above Normal	Falling

West Bengal, Sikkim

Water level rise is expected in rivers Teesta, Jaldhaka, Torsa, Raidak and its tributaries for next 24 hrs. Flood like situations in some of the said rivers are likely to continue. Current flood situation in the state as per CWC network is as follows:

CWC Site	River	District	Flood Type	Trend in Water Level
Mekhliganj	Teesta	Cooch Behar	Severe	Steady
Tufanganj	Raidak-1	Cooch Behar	Severe	Steady
Jaldhaka NH-31	Jaldhaka	Jalpaiguri	Above Normal	Rising

Domohani	Teesta	Jalpaiguri	Above Normal	Risings
Melli	Teesta	Namchi	Above Normal	Steady

Uttarakhand & Uttar Pradesh

Water level rise is expected in rivers Sarda, Ramganga, Gauri Ganga (Pithogarh, Champawat dists.), Ramganga, Devha, Gomati (Almora, Nainital, Udham Singh Nagar dists.), rivers of Upper Yamuna (Dehradun, Haridwar, Tehri Garhwal dists.), Alaknanda (Chamoli dist.), Bhagirathi (Uttarkashi dist.) rivers of Upper Ganga (Haridwar, Dehradun, Pauri Garhwal dists.) for next 24 hrs. In Uttar Pradesh water level rise is expected in river Ghagra and its tributaries, Gomti, Rapti and Kwano. Severe to extreme flood situations are also expected in Gandak, Ghagra, Rapti, Gomti rivers for next 24 hours. Current flood situation in the state as per CWC network is as follows:

CWC Site	River	District	Flood Type	Trend in Water Level
Chhitaunighat	Gandak	Kushi Nagar	Extreme	Rising
Khadda	Gandak	Kushi Nagar	Severe	Falling
Balrampur	Rapti	Balrampur	Above Normal	Rising
Birdghat	Rapti	Gorakhpur	Above Normal	Rising
Elginbridge	Ghagra	Barabanki	Above Normal	Rising
Garhmukteshwar	Ganga	Hapur	Above Normal	Rising
Kakardhari	Rapti	Bahraich	Above Normal	Rising

Bihar

Due to very heavy rains to extreme heavy rains continuing in Nepal and neighbourhood, rivers such as Gandak, Bagmati, Adhwa, Kosi are expected to have flood like situations for next to days. Severe to extreme flood situations are also expected for next 2 days in above mentioned rivers. Current flood situation in the state as per CWC network is as follows:

CWC Site	River	District	Flood Type	Trend in Water Level
Bagaha	Gandak	West Champaran	Extreme	Rising
Araria	Parman	Araria	Severe	Steady
Baltara	Kosi	Khagaria	Severe	Rising
Dumariaghat	Gandak	Gopalganj	Severe	Rising
Dhengraghat	Mahananda	Purnia	Severe	Rising
Taibpur	Mahananda	Kishanganj	Severe	Rising
Benibad	Bagmati	Muzaffarpur	Severe	Rising
Runisaidpur	Bagmati	Muzaffarpur	Severe	Rising
Jainagar	Kamla	Madhubani	Above Normal	Falling
Jhanjharpur	Kamla-balan	Madhubani	Above Normal	Falling
Dheng Bridge	Bagmati	Sitamarhi	Above Normal	Falling
Basua	Kosi	Supaul	Above Normal	Steady
Jhawa	Mahananda	Katihar	Above Normal	Rising

Karnataka

Karnataka Water level rise is expected in Kabini, Harangi, Shambhavi, Swarna, Haladi, Aghanashini, Netravathi, Sita and small rivers in Dakshin Kannada, Udupi, Uttara Kannad, Shimoga, Chikmangallur districts for next 24 hrs

Maharashtra

Water level rise is expected in Upper Bhima, Ulhas, Vaitarna, Damanganga, Vashisti and other small rivers in districts Satara, Kolhapur, Sindhudurg, Raigad and Thane for next 24 hrs.

3.0 Advisory Flood Forecast for next 7-days in Table form

The flood situational Flood Forecasting Stations likely to be above warning level for next 7 days

S.No.	Station	River	District	State	08-07-2024	09-07-2024	10-07-2024	11-07-2024	12-07-2024	13-07-2024	14-07-2024
1	AYODHYA	GHAGRA	AYODHYA	Uttar Pradesh	AN	S	S	E	E	E	E
2	BADARPUR GHAT	BARAK	KARIMGANJ	Assam	S	AN	AN	S	S	S	S
3	KARIMGANJ	KUSHIYARA	KARIMGANJ	Assam	S	S	S	S	S	S	S
4	BEKI ROAD BRIDGE	BEKI	BARPETA	Assam	S	AN	AN	AN	AN	AN	AN
5	CHENIMARI (KHOWANG)	BURIDEHING	DIBRUGARH	Assam	S	AN	N	N	N	AN	AN
6	DHARAMTUL	KOPI LI	MARIGAON	Assam	S	AN	N	N	N	AN	S
7	NANGLAMORAGHAT	DESANG	SIVSAGAR	Assam	S	AN	AN	AN	AN	S	S
8	NEAMATIGHAT	BRAHMAPUTRA	JORHAT	Assam	S	S	AN	AN	S	S	S
9	NUMALIGARH	DHANSIRI (SOUTH)	GOLAGHAT	Assam	AN	AN	AN	AN	AN	S	S
10	SIVASAGAR	DIKHOW	SIVSAGAR	Assam	S	S	AN	AN	AN	S	S
11	TEZPUR	BRAHMAPUTRA	SONITPUR	Assam	S	S	AN	AN	AN	AN	S
12	DHUBRI	BRAHMAPUTRA	DHUBRI	Assam	S	S	S	S	AN	S	S
13	BENIBAD	BAGMATI	MUZAFFARPUR	Bihar	N	N	AN	AN	AN	S	S
14	BIRDEGHAT	RAPTI	GORAKHPUR	Uttar Pradesh	S	S	S	S	S	S	S
15	DABRI	RAMGANGA	SHAHJHANPUR	Uttar Pradesh	N	AN	S	S	S	S	AN
16	DARAULI	GHAGRA	SIWAN	Bihar	N	AN	AN	AN	S	S	S
17	DHENGGRAGHAT	MAHANANDA	PURNIA	Bihar	S	S	S	AN	AN	AN	AN
18	EKMIGHAT	ADHWARA	DARBHANGA	Bihar	N	N	N	N	N	AN	S
19	ELGINBRIDGE	GHAGRA	BARABANKI	Uttar Pradesh	S	S	S	S	S	AN	AN
20	KAMTAUL	ADHWARA	DARBHANGA	Bihar	N	AN	AN	AN	AN	S	S
21	KHADDA	GANDAK	KUSHINAGAR	Uttar Pradesh	S	AN	AN	AN	N	AN	AN
22	TURTIPAR	GHAGRA	BALLIA	Uttar Pradesh	AN	AN	S	S	S	S	S
23	DUMARIAGHAT	GANDAK	GOPALGANJ	Bihar	S	S	S	S	S	S	S
24	DHENG BRIDGE	BAGMATI	SITAMARHI	Bihar	S	S	S	S	S	S	S
25	RUNISAIDPUR	BAGMATI	MUZAFFARPUR	Bihar	AN	AN	S	S	S	S	S
26	TUFANGANJ	RAIDAK-I	COOCH BEHAR	West Bengal	S	S	S	S	S	AN	AN
27	MEKHLIGANJ (R_B)	TEESTA	KOCHBIHAR	West Bengal	S	AN	AN	AN	AN	AN	AN
28	ANNAPURNA GHAT	BARAK	CACHAR	Assam	AN	AN	AN	AN	AN	AN	AN
29	MATIJURI	KATAKHAL	HAILAKANDI	Assam	N	AN	AN	AN	AN	AN	AN
30	BADATIGHAT	SUBANSIRI	LAKHIMPUR	Assam	AN	AN	AN	AN	AN	AN	AN
31	DIBRUGARH	BRAHMAPUTRA	DIBRUGARH	Assam	AN	AN	AN	AN	AN	AN	AN

32	GOALPARA	BRAHMAPUTRA	GOALPARA	Assam	AN	AN	AN	AN	AN	AN	AN
33	GOLAGHAT	DHANSIRI (SOUTH)	GOLAGHAT	Assam	N	N	N	N	N	AN	AN
34	GUWAHATI(D.C.COURT)	BRAHMAPUTRA	KAMRUP	Assam	AN	AN	AN	N	N	AN	AN
35	NT ROAD CROSSING JIA-BHARALI	JIABHARALI	SONITPUR	Assam	AN	AN	AN	AN	AN	AN	AN
36	PUTHIMARI NH RD XING	PUTHIMARI	KAMRUP	Assam	N	N	N	N	N	N	AN
37	KOKRAJHAR	GAURANG	KOKRAJHAR	Assam	AN	AN	AN	AN	AN	AN	AN
38	KAMPUR	KOPILI	NAGAON	Assam	N	N	N	N	N	AN	AN
39	RANGANADI NT ROAD CROSSING	RANGANADI	LAKHIMPUR	Assam	N	N	N	N	N	N	AN
40	ARARIA	PARMAN	ARARIA	Bihar	AN	AN	N	N	N	N	N
41	BALRAMPUR	RAPTI	BALRAMPUR	Uttar Pradesh	AN	AN	AN	AN	N	N	N
42	BALTARA	KOSI	KHAGARIA	Bihar	AN	AN	AN	AN	AN	AN	AN
43	BANSI	RAPTI	SIDDHARTH NAGAR	Uttar Pradesh	N	AN	AN	AN	AN	AN	N
44	BASUA	KOSI	SUPAUL	Bihar	AN	AN	AN	AN	AN	AN	AN
45	GANGPUR SISWAN	GHAGRA	SIWAN	Bihar	N	N	N	N	N	N	AN
46	GARHMUKTESHWAR	GANGA	HAPUR	Uttar Pradesh	AN	AN	AN	AN	AN	N	N
47	HAYAGHAT	BAGMATI	DARBHANGA	Bihar	N	N	N	N	N	N	AN
48	JHANJHARPUR	KAMALABALAN	MADHUBANI	Bihar	AN	AN	AN	AN	AN	AN	AN
49	JHAWA	MAHANANDA	KATIHAR	Bihar	AN	AN	AN	N	N	N	N
50	KACHHLABRIDGE	GANGA	BUDAUN	Uttar Pradesh	AN	AN	AN	AN	AN	AN	AN
51	REWAGHAT	GANDAK	MUZAFFARPUR	Bihar	AN	AN	AN	AN	AN	AN	AN
52	JAINAGAR	KAMLA	MADHUBANI	Bihar	AN	AN	AN	AN	AN	AN	AN
53	TAIBPUR	MAHANANDA	KISHANGANJ	Bihar	AN	AN	AN	AN	AN	AN	AN
54	DOWLAISWARAM (STATE GOVT SITE)	GODAVARI	EAST GODAVARI	Andhra Pradesh	N	N	N	AN	AN	AN	AN
55	SONBARSA	ADHWARA	SITAMARHI	Bihar	N	N	N	N	N	N	AN
56	GOLOKGANJ	SANKOSH	DHUBRI	Assam	AN	N	N	N	N	N	N
57	JALDHAKA NH-31	JALDHAKA	JALPAIGURI	West Bengal	AN	N	N	N	N	N	N
58	MELLI	TEESTA	NAMCHI	Sikkim	AN	AN	AN	AN	AN	AN	AN

Abbreviation: N: Normal Flood Situation, AN: Above Normal Flood Situation, S: Severe Flood Situation, E: Extreme Flood Situation

For more details, please visit <https://ffs.india-water.gov.in/> for flood forecast monitoring & short range flood forecast and <https://aff.india water.gov.in/> for medium range flood forecast.

Extreme Flood Situation: (Site (s) where the previous Highest Flood Level (HFL) is exceeded or equalled).

Severe Flood Situation: (Site (s) where water level is touching or exceeding the Danger Level but below Highest Flood Level (HFL)).

Above Normal Flood Situation: (Site (s) where water level is touching or exceeding the Warning Level but below Danger Level).

3.0 Storage Position in Dams where Inflow forecast is being issued by CWC as on 07th July 2024

Reservoirs Position

Storage above 85%	
Storage above 60%	

QPF categories (mm)	0	0.1-0.9	1.0-2.9	3.0-7.9	8.0-12.9	13.0-17.9	18.0-22.9	23.0-27.9	28.0-32.9	33.0-37.9	38.0-42.9	43.0-47.9	48.0-52.9	53.0-57.9	58.0-62.9	63.0-67.9	68.0-72.9	73.0-77.9	78.0-82.9	83.0-87.9	88.0-92.9	93.0-97.9	98.0-102.9	103.0-107.9	108.0-112.9	113.0-117.9	118.0-122.9	123.0-127.9	128.0-132.9	133.0-137.9	138.0-142.9	143.0-147.9	148.0-152.9	153.0-157.9	158.0-162.9	163.0-167.9	168.0-172.9	173.0-177.9	178.0-182.9	183.0-187.9	188.0-192.9	193.0-197.9	198.0-202.9	203.0-207.9	208.0-212.9	213.0-217.9	218.0-222.9	223.0-227.9	228.0-232.9	233.0-237.9	238.0-242.9	243.0-247.9	248.0-252.9	253.0-257.9	258.0-262.9	263.0-267.9	268.0-272.9	273.0-277.9	278.0-282.9	283.0-287.9	288.0-292.9	293.0-297.9	298.0-302.9	303.0-307.9	308.0-312.9	313.0-317.9	318.0-322.9	323.0-327.9	328.0-332.9	333.0-337.9	338.0-342.9	343.0-347.9	348.0-352.9	353.0-357.9	358.0-362.9	363.0-367.9	368.0-372.9	373.0-377.9	378.0-382.9	383.0-387.9	388.0-392.9	393.0-397.9	398.0-402.9	403.0-407.9	408.0-412.9	413.0-417.9	418.0-422.9	423.0-427.9	428.0-432.9	433.0-437.9	438.0-442.9	443.0-447.9	448.0-452.9	453.0-457.9	458.0-462.9	463.0-467.9	468.0-472.9	473.0-477.9	478.0-482.9	483.0-487.9	488.0-492.9	493.0-497.9	498.0-502.9	503.0-507.9	508.0-512.9	513.0-517.9	518.0-522.9	523.0-527.9	528.0-532.9	533.0-537.9	538.0-542.9	543.0-547.9	548.0-552.9	553.0-557.9	558.0-562.9	563.0-567.9	568.0-572.9	573.0-577.9	578.0-582.9	583.0-587.9	588.0-592.9	593.0-597.9	598.0-602.9	603.0-607.9	608.0-612.9	613.0-617.9	618.0-622.9	623.0-627.9	628.0-632.9	633.0-637.9	638.0-642.9	643.0-647.9	648.0-652.9	653.0-657.9	658.0-662.9	663.0-667.9	668.0-672.9	673.0-677.9	678.0-682.9	683.0-687.9	688.0-692.9	693.0-697.9	698.0-702.9	703.0-707.9	708.0-712.9	713.0-717.9	718.0-722.9	723.0-727.9	728.0-732.9	733.0-737.9	738.0-742.9	743.0-747.9	748.0-752.9	753.0-757.9	758.0-762.9	763.0-767.9	768.0-772.9	773.0-777.9	778.0-782.9	783.0-787.9	788.0-792.9	793.0-797.9	798.0-802.9	803.0-807.9	808.0-812.9	813.0-817.9	818.0-822.9	823.0-827.9	828.0-832.9	833.0-837.9	838.0-842.9	843.0-847.9	848.0-852.9	853.0-857.9	858.0-862.9	863.0-867.9	868.0-872.9	873.0-877.9	878.0-882.9	883.0-887.9	888.0-892.9	893.0-897.9	898.0-902.9	903.0-907.9	908.0-912.9	913.0-917.9	918.0-922.9	923.0-927.9	928.0-932.9	933.0-937.9	938.0-942.9	943.0-947.9	948.0-952.9	953.0-957.9	958.0-962.9	963.0-967.9	968.0-972.9	973.0-977.9	978.0-982.9	983.0-987.9	988.0-992.9	993.0-997.9	998.0-1000.0
---------------------	---	---------	---------	---------	----------	-----------	-----------	-----------	-----------	-----------	-----------	-----------	-----------	-----------	-----------	-----------	-----------	-----------	-----------	-----------	-----------	-----------	------------	-------------	-------------	-------------	-------------	-------------	-------------	-------------	-------------	-------------	-------------	-------------	-------------	-------------	-------------	-------------	-------------	-------------	-------------	-------------	-------------	-------------	-------------	-------------	-------------	-------------	-------------	-------------	-------------	-------------	-------------	-------------	-------------	-------------	-------------	-------------	-------------	-------------	-------------	-------------	-------------	-------------	-------------	-------------	-------------	-------------	-------------	-------------	-------------	-------------	-------------	-------------	-------------	-------------	-------------	-------------	-------------	-------------	-------------	-------------	-------------	-------------	-------------	-------------	-------------	-------------	-------------	-------------	-------------	-------------	-------------	-------------	-------------	-------------	-------------	-------------	-------------	-------------	-------------	-------------	-------------	-------------	-------------	-------------	-------------	-------------	-------------	-------------	-------------	-------------	-------------	-------------	-------------	-------------	-------------	-------------	-------------	-------------	-------------	-------------	-------------	-------------	-------------	-------------	-------------	-------------	-------------	-------------	-------------	-------------	-------------	-------------	-------------	-------------	-------------	-------------	-------------	-------------	-------------	-------------	-------------	-------------	-------------	-------------	-------------	-------------	-------------	-------------	-------------	-------------	-------------	-------------	-------------	-------------	-------------	-------------	-------------	-------------	-------------	-------------	-------------	-------------	-------------	-------------	-------------	-------------	-------------	-------------	-------------	-------------	-------------	-------------	-------------	-------------	-------------	-------------	-------------	-------------	-------------	-------------	-------------	-------------	-------------	-------------	-------------	-------------	-------------	-------------	-------------	-------------	-------------	-------------	-------------	-------------	-------------	-------------	-------------	-------------	-------------	-------------	--------------

Sl.No.	Reservoir/Dams	River/Sub-Basin /Basin	State	US/DS District	Rainfall situation				
					Day1	Day2	Day3	Day4	Day 5
1	Thottapalli Reservoir	Nagavali/Nagavali&Others/ERF (Mahanadi to Pennar)	Andhra Pradesh	Vizianagaram					
2	Gotta Barrage	Vamsadhara/Vamsadhara/EFR(Maha nadi to Pennar)	Andhra Pradesh	Srikakulam					
3	Sunkesula Barrage	Tungabhadra/Lower Tungabhadra/Krishna	Andhra Pradesh	Kurnool					
4	Prakasam Barrage	Krishna/Lower Krishna/ Krishna	Andhra Pradesh	Krishna/ Guntur					
5	Singatalur Barrage	Tungabhadra/Upper Tungabhadra/Krishna	Karnataka	Gadag/LKD Hyderabad					
6	Hippargi Reservoir	Krishna/Upper Krishna/Krishna	Karnataka	Bagalkot					
7	Narayanpur Dam	Krishna/Upper Krishna/Krishna	Karnataka	Mandya					
8	NMD Weir	Godavari/Upper Godavari/Godavari	Maharashtra	Nasik/Ahmednagar					
9	Rana Pratap Sagar	Chambal/Upper Chambal/Ganga	Rajasthan	Neemuch(MP)/Dholpur,Kota, Bundi(Raj)					
10	Kota Barrage	Chambal/Upper Chambal/Ganga	Rajasthan	Neemuch (MP)/Dholpur, Kota, Bundi(Raj)					
11	PD Jurala	Krishna/Upper Krishna/Krishna	Telangana	Mahbubnagar					
12	Ichari Dam	Tons/Upper Yamuna/Ganga	Uttarakhand	Dehradun/Nahan (HP)					
13	Sathanur Dam	Ponnaiar/Middle S. Pennar/East f. r. between Pennar and Cauvery Basin	Tamil Nadu	Dharmapuri,Tiruvannamalai / Villupuram, Cuddalore					

Note-Based on above information, Project Authority may regulate the reservoirs as per standard operating manuals/rule levels to avoid downstream flooding and upstream submergence

Note- Based on above information, Project Authority may regulate the reservoirs as per standard operating manuals/ rule levels to avoid downstream flooding and upstream submergence