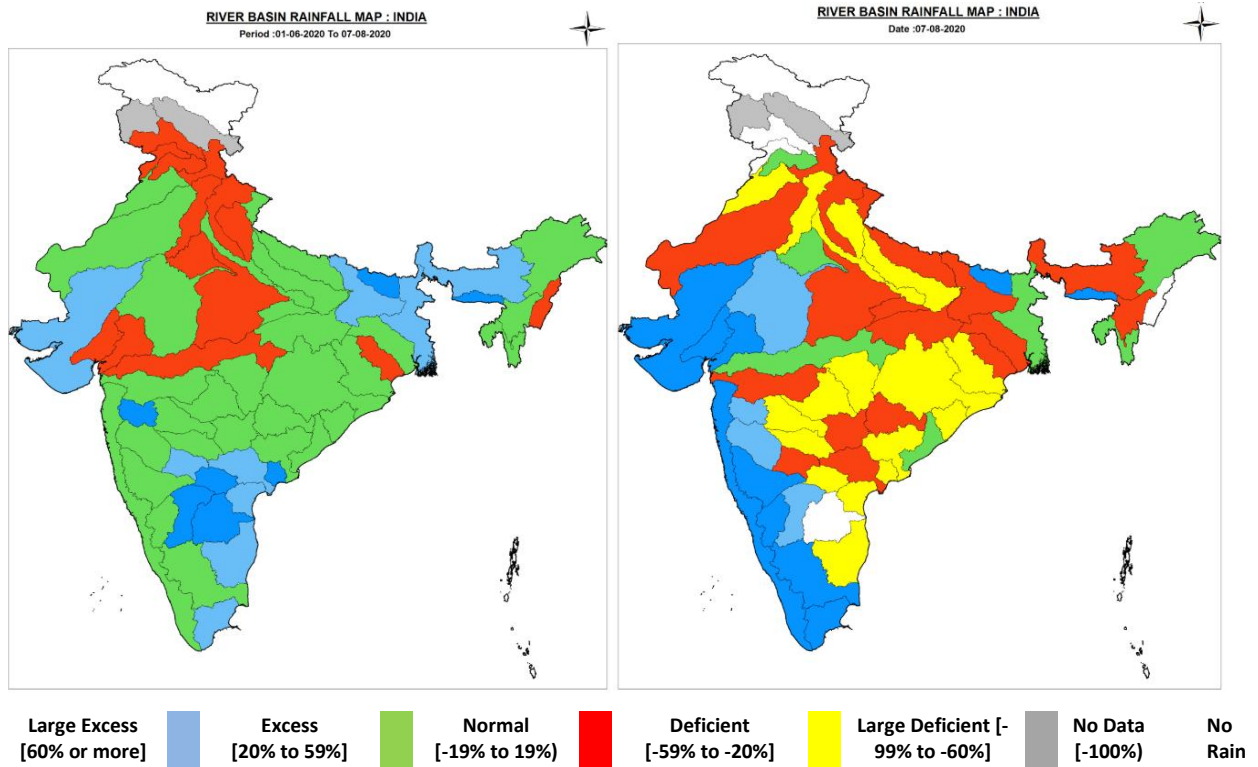




Central Water Commission  
Daily Flood Situation Report cum Advisories  
07-08-2020

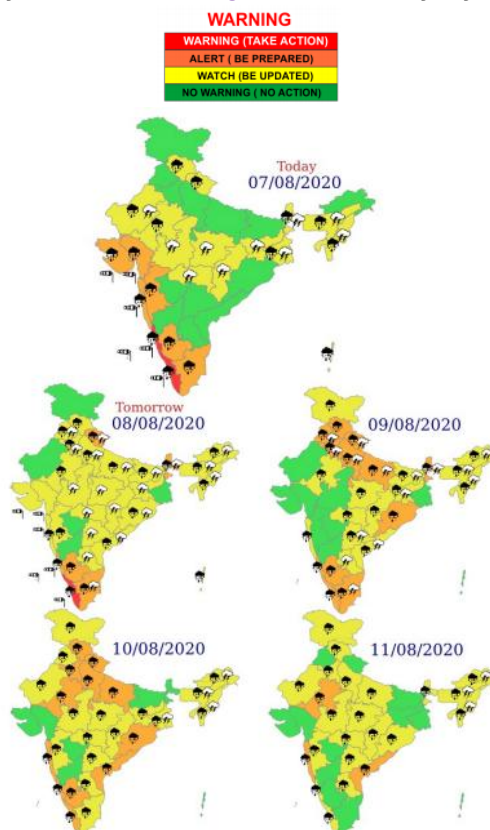
1.0 IMD information

1.1 Basin wise departure from normal of cumulative and daily rainfall



Notes: a) Small figures indicate actual rainfall (mm), while bold figures indicate Normal rainfall (mm)  
b) Percentage departures of rainfall are shown in brackets.

1.2 Rainfall forecast for next 5 days issued on 7<sup>th</sup> August 2020 (Midday) by IMD

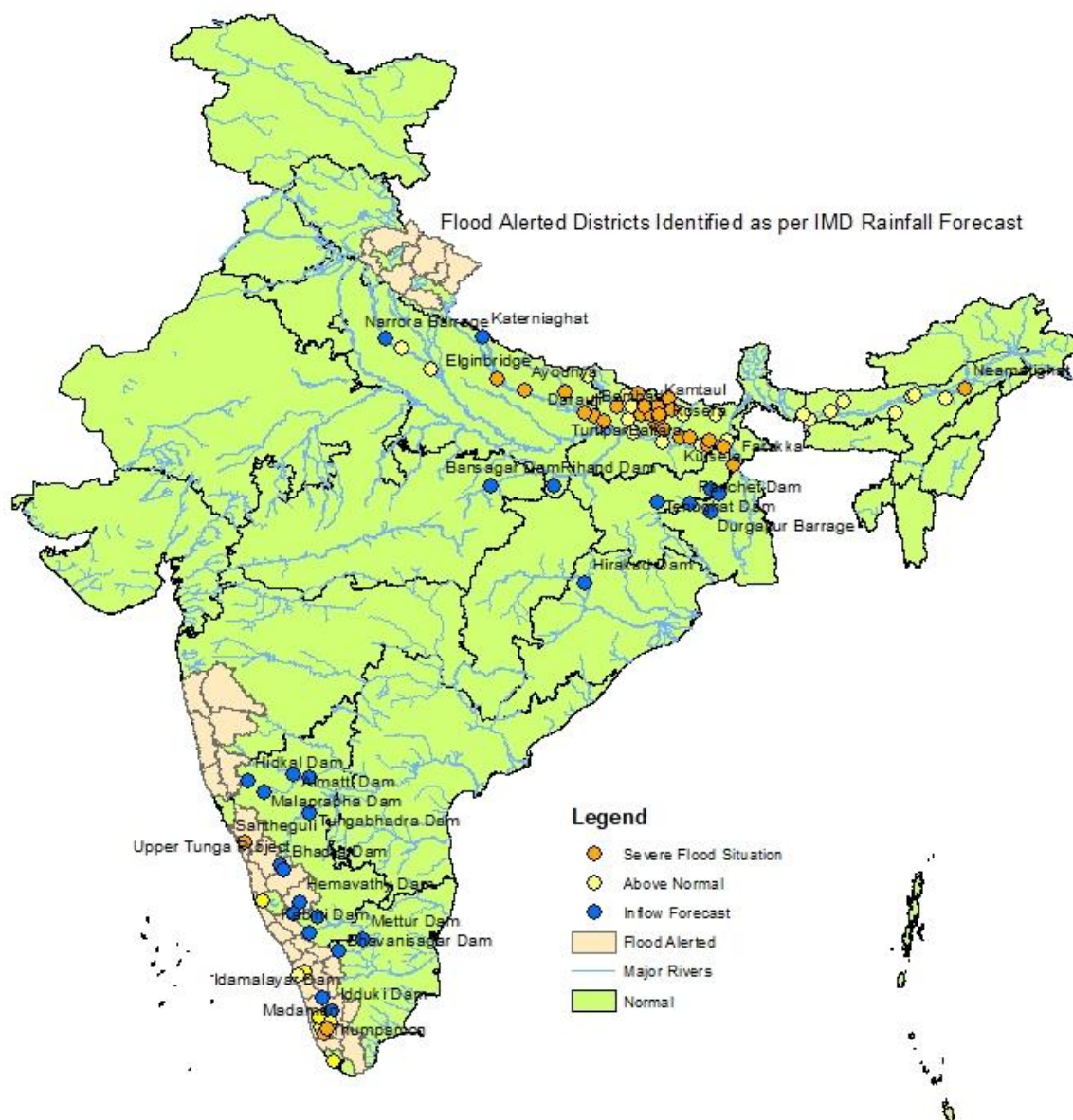


## 2.1 Flood Situation on 7<sup>th</sup> August 2020

PART - I: LEVEL FORECAST		
S.No.	Flood Situations	Numbers of Forecasting Sites
<b>A</b>	Extreme Flood Situation: (Site (s) where the previous Highest Flood Level (HFL) is exceeded or equalled)	0
<b>B</b>	Severe Flood Situation: (Site (s) where water level is touching or exceeding the Danger Level but below Highest Flood Level (HFL))	28
<b>C</b>	Above Normal Flood Situation: (Site (s) where water level is touching or exceeding the Warning Level but below Danger Level)	27
Total number of sites above Warning Level ( A+B+C)		55
PART - II: INFLOW FORECAST		
Number of sites for which inflow forecasts issued: (Where Inflows are equal or exceed the specified Threshold Limit for a particular reservoir / barrage)		26

Details can be seen in link :- [http://cwc.gov.in/sites/default/files/cfcr-cwcdfb07082020\\_5.pdf](http://cwc.gov.in/sites/default/files/cfcr-cwcdfb07082020_5.pdf)

### 2.1.1 Summary of Flood Situation as per CWC Flood Forecasting Network



## 2.2 CWC Advisories

- Widespread rainfall with isolated heavy to very heavy falls most likely to continue over Gujarat state, Konkan & Goa and Madhya Maharashtra (Ghat areas) during next 24 hours and decrease thereafter.
- Scattered heavy to very heavy falls with isolated extremely heavy falls very likely over Kerala & Mahe during next 2 days and isolated heavy to very heavy rainfall during subsequent 3 days.
- Isolated heavy to very heavy falls also very likely over Coastal & South Interior Karnataka and Tamilnadu during next 4 days. Isolated extremely heavy falls also likely over Coastal Karnataka during next 24 hours and over Tamilnadu (Hilly regions of Nilgiri, Coimbatore and Theni districts) during next 48 hours.

Based on the above rainfall forecast the following advisories are issued by CWC for various States:

### 2.2.1 Ghat Area along West Coast

#### Karnataka

There is increase in inflows in Hidkal Dam on river Ghataprabha due to high intensity rainfall in the catchment areas of Maharashtra. The Dam is filled to 74% of its full capacity and with increased inflows, there may be chances that the dam may get filled up till 80 to 85% due to this spell of rainfall. The combined flows from Krishna, Doodhganga, Panchganga and Ghataprabha will be realised at Almatti Dam and the inflow is rising rapidly. The dam is having storage of about 79%. Since Narayanpur Dam downstream of Almatti Dam is near its FRL, necessary pre-depletion can be done from Narayanpur Dam.

Inflows into Gajanur and Bhadra Dam in Tungabhadra Basin in its upstream due to very heavy rains in their catchments. Since the Gajanur Dam is already at FRL necessary care should be taken to regulate excess flow downstream areas. Bhadra Dam is having storage of 66% but the storage is likely to increase rapidly due to forecasted rainfall. Necessary precautions for proper gate operation should be taken in association with intense ongoing rainfall.

Due to heavy rainfall in Dakshina Kannada, Udupi, Uttara Kannada, Shivamogga, Chikmagalur, Hassan and Kodagu Districts, most of the rivers in this district are rising. River Aghanashini at Santeguli in Uttara Kannada district is flowing in Severe Flood Situation with falling trend and river Netravathi at Bantwal in Dakshina Kannada District is flowing in Above Normal Situation today with falling trend and close watch is to be maintained.

**Extremely Heavy rain of 40 cm has been recorded at Bhagamandala in Kodagu District which is in the source regions of river Cauvery.** River Cauvery at Napoklu in Kodagu District is rising rapidly and is very likely to cross its Highest Flood Level by today evening.

Due to continuing rains in entire upstream of Cauvery, Harangi, Hemavathi and Kabini there have been increased inflows into all reservoirs.

Kabini Dam in Mysuru District which is filled upto 82% of its full capacity has been releasing an average of 1699 cumec (60000 cusec) at 1500 hrs. As the rain is continuing in catchment areas of Kabini in Wynadu District of Kerala, there is likelihood of further rise in inflows for next 2-3 days.

Harangi Dam in Cauvery Basin in Kodagu District is filled upto 81% of its full capacity and is releasing 374 cumec (13400 cusec) compared to inflow of 379 cumec (13200 cusec). Due to heavy rainfall in Kodagu District, the Dam is expected to get increased inflows.

River Cauvery at Kudige in Kodagu District and at Kollegal in Chamarajnagar District are flowing above their Danger Levels with rising trend. It is expected to rise further. **The combined effect of release from Harangi Dam and the rising river Cauvery upstream of Krishna Raja Sagar as well as river Lakshmanatirtha is increasing the flow into Krishna Raja Sagar. Presently, KRS Dam is having a storage of 35.77 TMC compared to 49.45 TMC at FRL. Since there is forecast of heavy to very heavy rainfall for the next 4 days, there is likelihood of dam attaining very near to its FRL by 8<sup>th</sup> August 2020.** Necessary gate operations have to be done as per SOP after informing all downstream areas and lower riparian States..

Since very heavy to extreme rainfall has been forecasted to continue for another 4-5 days, proper precautions have to be taken and advance release of water may have to be resorted to in order to avoid panic discharges after dam attaining FRL in all the above Dams. **Releases from any of these reservoirs may be done as per rule curve and standard operating procedure.**

#### Kerala

Due to ongoing extremely heavy rainfall in Wayanad & Idukki Districts, and very heavy rains over Palakkad, rivers Kabini, Bharathapuzha, Periyar and Pamba are rising rapidly. River Manimala at Kallooppa, River Achankovil at Thumpamon and River Pamba at Madamon all in Pathanamthitta District and River Bhavani at Kottathara in Palakkad District in Kerala are flowing in Severe Flood situation. **River Bharathapuzha at Kumbidi in Palakkad District** is flowing in Above Normal Flood Situation but **is likely to cross Danger Level by tonight.** River Pamba at Malakkara in Pathanamthitta District is



now flowing in **Above Normal Flood Situation but is likely to cross Danger Level by today 2000 hrs** and flow about 1 m above Danger Level by today midnight. **As the rain is continuing, chances of Malakkara going very near to HFL is also not ruled out and there is 5-25% chance of River Pamba crossing HFL at Malakkara by tomorrow.** Extremely heavy rainfall has been predicted for Idukki, Malappuram and Wayanad Districts in the next 3 days. Heavy to very heavy rainfall has been forecasted for all other Districts during the next 3-4 days. There are increased inflows into Idukki and Edamalayar Dams. The dams have increased present storage capacity of 44 and 45% compared to around 35 to 36% capacity yesterday. Since the rainfall is expected to continue for 3-4 days, the inflows are likely to continue depending on the intensity of rainfall. However, there is sufficient storage available in these dams.

### Tamilnadu

Rivers Bhavani and Noyyal in Cauvery Basin is rising due to extremely heavy rains in Nilgiris and Coimbatore District, Nirar a tributary of Edamalayar is also getting increased flows due to very heavy rain in its catchment in Coimbatore District. Bhavanisagar Dam on river Bhavani in Erode District of Tamilnadu is getting heavy inflows and is likely to rise further. Presently the reservoir level is about 277.456 m compared to its FRL of 280.42 m. However, close watch is to be maintained.

**Due to releases from Kabini Dam and likely release from KRS from today evening combined discharge is likely to rise the water level at Biligundulu in Dharmapuri Districts by tomorrow evening.** Accordingly, the inflow into Mettur Dam also will be increasing.

There are chances of Landslides due to heavy rainfall in the hilly areas of Kerala, Karnataka and Tamilnadu.

### Maharashtra

Due to ongoing heavy rainfall in the Coastal Districts of Maharashtra, most of the west flowing rivers between Tapi and Tadri including Damanganga are rising rapidly and hence strict watch has to be maintained. Rivers Kajvi and Bav in Ratnagiri District, Kal in Raigad District and Gad in Sindhudurg District are rising rapidly. Due to Very heavy rainfall at Mahabaleshwar, Koyna Dam as well as in catchments of various other small reservoirs, there is rapid rise in inflows into the Koyna and Warna Dams. **Major Dams such as Koyna (64% full), Warna (81% full), Doodhganga (82% full) shall monitor the intensity of rainfall and inflows using the short-range inflow forecasts provided by CWC and decide on release as per Standard Operating Procedure and Rule Curves. The releases from these dams have to be intimated to all concerned downstream Districts as well as to lower riparian States.**

**Railway/ Road movement over the bridges in the district should be regulated as there is likely to be water logging near rail track and over road bridges. All precautions have to be taken for the next 72 hours in view of the rainfall warnings given.**

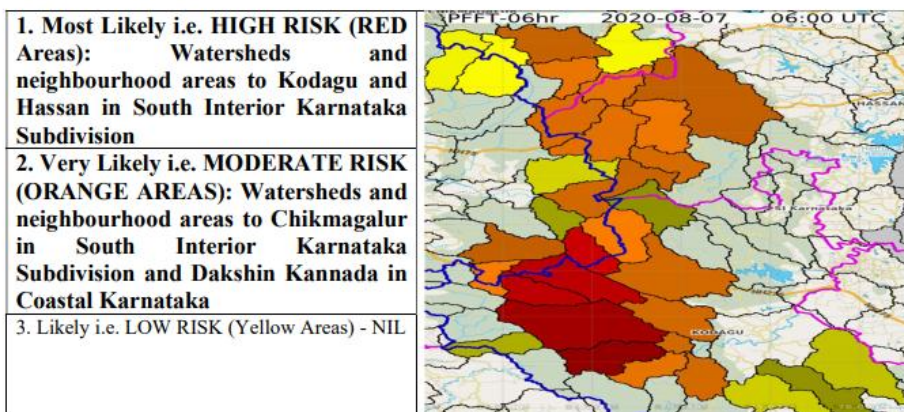
### 2.2.2 Bihar, Jharkhand and Gangetic West Bengal

River Adhwara Group at Bishunpur Flood Monitoring Station in Darbhanga District continues to flow in Extreme Flood Situation with almost steady trend. This is also likely to remain steady for the next 2 - 3 days before falling very slowly.

Rivers Gandak, Burhi Gandak, Bagmati, Adhwara Group, Kamla Balan, Kosi and Mahananda continue in Severe to Above Normal Flood Situation. This is likely to continue for another 2-3 days in Bihar and then slowly fall as rainfall is not forecasted in Bihar.

### 2.2.3 Flash Flood Guidance issued by IMD in respect of Kodagu and Hassan Districts is as below:

**Flash Flood threat for next 6 hours:** FFG Model and other diagnostic parameters indicate that any persistent amount of rainfall can cause surface runoff conditions with the possibility of flash flood occurrences as follows:



### 2.2.4 Impact Based Actions

Strict vigil is to be maintained in all the above States & Districts for next 4 - 5 days. Breaches in Embankment if any may aggravate further flood like situation which should be monitored and all efforts to fill any such breaches should be done at the earliest. Maximum vigil has to be maintained along the rail and road tracks and bridges on these rivers and regulate traffic suitably to avoid any incident. **Submergence of low-level cause ways along rivers and railway tracks along flashy rivers is to be monitored closely especially along Western Ghat areas.** All district administrations can take effective measures taking into account the prevailing Covid19 situation in relief camps being set up in these districts.

### 3. Flood Affected Districts

**Bihar:** Araria, Purnia, Katihar, Madhubani, Darbhanga, Muzaffarpur, Purba Champaran, Khagaria, Sitamarhi, Gopalganj, Samastipur, Siwan  
**Uttar Pradesh:** Barabanki, Ayodhya, Gorakhpur, Ballia, Badaun  
**Karnataka:** Uttara Kannada, Dakshina Kannada, Kodagu, Shivamogga  
**Kerala:** Wynad

### 4. Flood Alerted Districts

**Maharashtra:** Districts of Palghar, Thane, Raigad, Ratnagiri, Sindhudurg along West Flowing Rivers between Tapi and Tadri, Nasik along Rivers Godavari and Damanganga, Pune along river Bhima, Satara & Kolhapur on river Krishna and its tributaries.  
**Karnataka:** Along West Flowing Rivers in Uttara Kannada, Dakshina Kannada, Udupi Districts, along river Tunga in Shivamogga District, along river Cauvery in Kodagu District, along river Hemavathi in Chikmagalur & Hassan Districts, along river Kabini in Mysuru District  
**Kerala:** Districts along rivers Pamba, Achankovil, Meenachil, Periyar, Bharathapuzha, Valapatnam, Kuttyadi  
**Odisha:** Districts along rivers Mahanadi, Brahmani-Baitarni  
**Chhattisgarh:** Districts along river Mahanadi and its tributaries