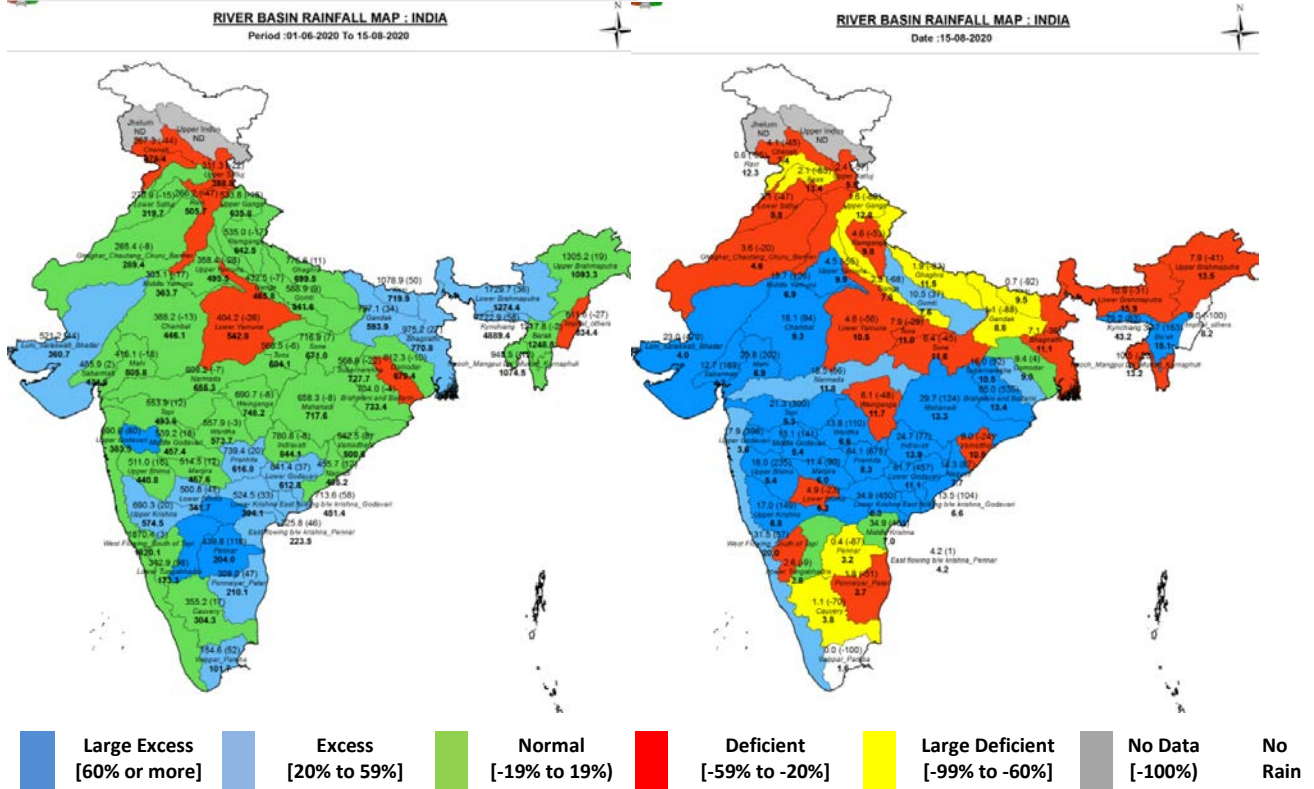




Central Water Commission  
Daily Flood Situation Report cum Advisories  
15-08-2020

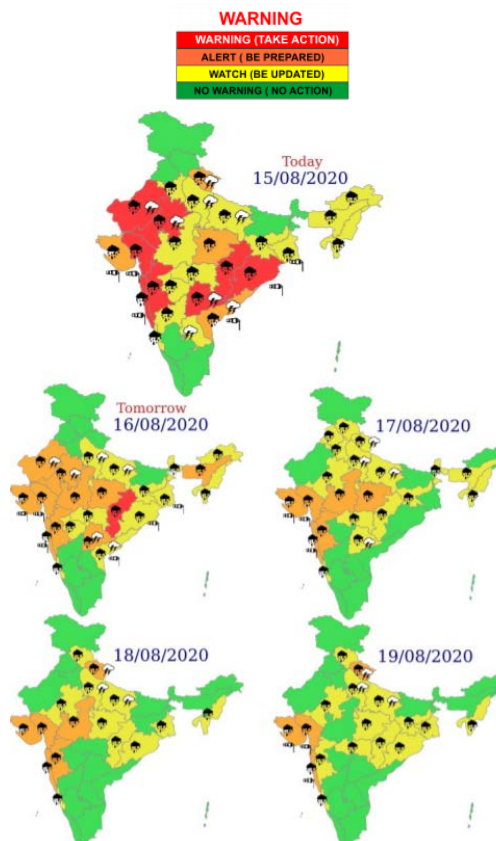
1.0 IMD information

1.1 Basin wise departure from normal of cumulative and daily rainfall



Notes: a) Small figures indicate actual rainfall (mm), while bold figures indicate Normal rainfall (mm)  
b) Percentage departures of rainfall are shown in brackets.

1.2 Rainfall forecast for next 5 days issued on 15<sup>th</sup> August 2020 (Midday) by IMD



## 2.0 CWC inferences

### 2.1 Flood Situation on 15<sup>th</sup> August 2020

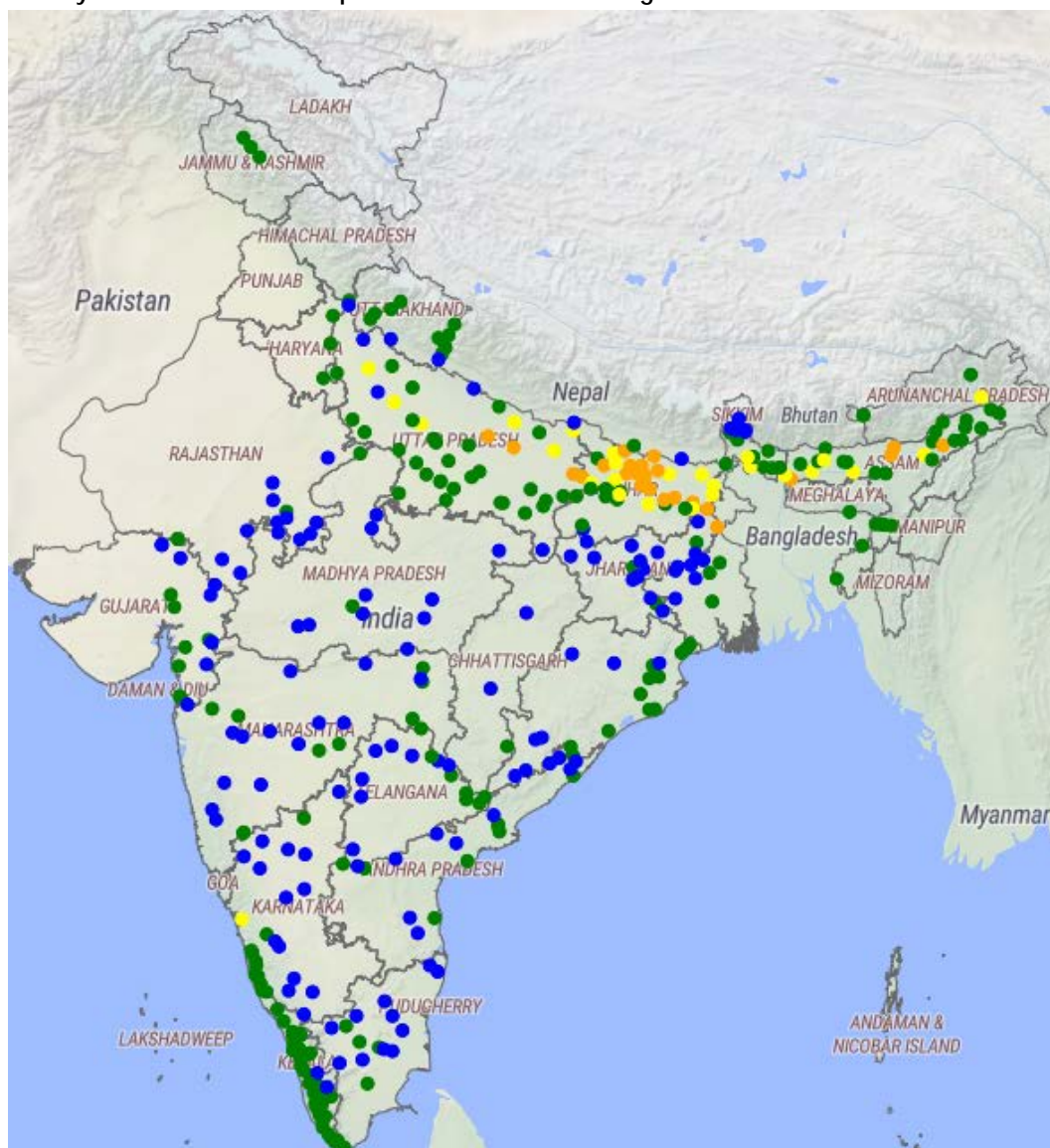
#### 2.1.1 Summary of Flood Situation as per CWC Flood Forecasting Network

On 15<sup>th</sup> August 2020, 27 Stations (16 in Bihar, 5 in Assam, 4 in Uttar Pradesh, 1 each in Jharkhand and West Bengal) are flowing in Severe Flood Situation and 28 stations (11 in Bihar, 8 in Assam, 5 in Uttar Pradesh, 2 in Andhra Pradesh, 1 each in Arunachal Pradesh and Telangana) are flowing in Above Normal Flood Situation. Inflow Forecast has been issued for 37 Barrages and Dams (11 in Karnataka, 4 in Madhya Pradesh, 3 each in Maharashtra, Andhra Pradesh, Uttar Pradesh, and Tamilnadu, 2 each in Gujarat, Rajasthan, Telangana & West Bengal and 1 each in Odisha & Jharkhand)

PART - I: LEVEL FORECAST		
S.No.	Flood Situations	Numbers of Forecasting Sites
<b>A</b>	Extreme Flood Situation: (Site (s) where the previous Highest Flood Level (HFL) is exceeded or equalled)	0
<b>B</b>	Severe Flood Situation: (Site (s) where water level is touching or exceeding the Danger Level but below Highest Flood Level (HFL))	27
<b>C</b>	Above Normal Flood Situation: (Site (s) where water level is touching or exceeding the Warning Level but below Danger Level)	28
Total number of sites above Warning Level ( A+B+C)		55
PART - II: INFLOW FORECAST		
Number of sites for which inflow forecasts issued: (Where Inflows are equal or exceed the specified Threshold Limit for a particular reservoir / barrage)		37

Details can be seen in link [http://cwc.gov.in/sites/default/files/dfb202015082020\\_5.pdf](http://cwc.gov.in/sites/default/files/dfb202015082020_5.pdf)

#### 2.1.1 Summary of Flood Situation as per CWC Flood Forecasting Network



## 2.2 CWC Advisories

- Scattered to Fairly widespread rainfall very likely over northwest India during next 5 days. Isolated heavy falls are likely over Uttarakhand and Uttar Pradesh during next 4-5 days.
- Fairly widespread to widespread rainfall with isolated extremely heavy falls likely over Gujarat region on 15<sup>th</sup>, 17<sup>th</sup> & 18<sup>th</sup> August; over south Rajasthan, Ghat areas of Madhya Maharashtra and Konkan & Goa on 15<sup>th</sup> August; over Chhattisgarh on 15<sup>th</sup> & 16<sup>th</sup> over Odisha & Telangana on 15<sup>th</sup> August and over Saurashtra & Kutch on 18<sup>th</sup> & 19<sup>th</sup> August.
- Fairly widespread to widespread rainfall with heavy to very heavy falls at isolated places very likely over Odisha, Coastal Andhra Pradesh and Telangana during next 2 days, and at isolated places over Gujarat state, Konkan & Goa, Ghat areas of Madhya Maharashtra, East Rajasthan and parts of central India during next 4-5 days.
- Due to the likely formation of a Low-Pressure Area, fairly widespread to widespread rainfall with isolated heavy to very heavy falls is likely over Odisha and Gangetic West Bengal during 18<sup>th</sup> & 19<sup>th</sup> August.

Based on the above rainfall forecast the following advisories are issued by CWC for various States:

### 2.2.1 Gujarat, Maharashtra & Goa

Heavy to very Heavy rainfall with isolated Extremely Heavy rainfall is likely over Gujarat state & East Rajasthan during next 2-3 days and over Ghat areas of Madhya Maharashtra during next 24 hours. Hence there is likelihood of rise in Water Levels in the basins of Lower Mahi, Lower Narmada, Lower Tapi and Damanganga. Rivers Narmada, Tapi, Damanganga are likely to rise rapidly in association with rains forecasted for next 4-5 days. Madhuban Dam in Valsad District is likely to get heavy inflows due to the forecasted rainfall. At present, the Dam has storage of 67.09%. Close watch is to be maintained and releases if any has to be done, it should be with due care and after informing all downstream districts including Union Territories of Daman. Other Dams in this region such as Kadana Dam on river Mahi, Panam Dam on river Panam, Sardar Sarovar Dam on river Narmada, Ukai Dam on river Tapi have storage of 31.53%, 40.74%, 52.64% and 73.32% storage respectively. Hatnur Dam in Jalgaon District of Maharashtra is likely to get an inflow of around 1850 cumec till today night and Ukai Dam is also expected to receive around 3009 cumec till tomorrow morning. Due to forecast of extremely heavy rain in their catchment, there is likelihood of sudden rise in inflows which may have to be regulated properly following the rule curves and Standard Operating Procedures (SOP) after informing all downstream Districts well in advance. Extremely heavy rain has also been forecasted in Saurashtra & Kutch, many of the small dams are already near their FRL and close watch is to be maintained for proper reservoir operation.

Heavy to Very Heavy at few places with extremely heavy rainfall at isolated places are likely in Palghar, Thane, Nasik, Pune, Satara, Raigad, Ratnagiri, Sindhudurg and Kolhapur Districts of Maharashtra and in the Districts of South & North Goa. As the rainfall of higher intensity is likely to continue for at least 1-2 days, there is likelihood of rise in levels of rivers along the West Coast in Maharashtra & Goa in the West Flowing Rivers between Tapi and Tadri. Since most of the dams in the region have storage of the order of 65% to 98% of their Full capacity, hence all the dams should exercise caution. Khadakwasla Dam in Pune District is releasing around 300 cumec of water in to river while Veer Dam in Pune District which is 96.28% full and is releasing around 882 cumec in river Nira. All these releases will be increasing the level of river Bhima. Ujni Dam in Sholapur District is only 40% full, the increase flow in Bhima will increase the storage in Ujni dam.

**Necessary precautions have to be taken in Road and Rail Bridges which pass through these areas as they are prone to submergence. Care should be taken to regulate road and rail traffic to avoid any incidents.**

### 2.2.2 Rajasthan & Madhya Pradesh

Due to forecast of heavy to very heavy rainfall in East Rajasthan and West Madhya Pradesh for next 3-4 days, there is likelihood of rise in Water Levels in rivers such as Chambal, Mahi, Sabarmati, Kalisindh, Banas (both East and West Flowing), etc. Most of the dams in these rivers are having storage between 35 to 70%, care should be exercised to monitor the situation very closely. Releases if any has to be done, it should be after advance information to all concerned downstream districts and lower riparian States. Inflows have started increasing in Panchana Dam, and Parwan Pickup Weir and have crossed the threshold limit. Inflow Forecast have been issued for these reservoirs in Rajasthan.

### 2.2.3 Himachal Pradesh, Punjab, Haryana, Uttarakhand, Uttar Pradesh

Due to forecast of heavy to very heavy rainfall in these States in the next 2 to 3 days, there is likelihood of rise in Water Levels in rivers such as Sutlej, Ravi, Beas, Ghaggar, Yamuna, Bhagirathi, Alaknanda, Ganga, Ramganga, Sarda, Sarju and Ghaghra. There is likelihood of flash floods in some of the hill districts in these states in association with cloud burst. Necessary precautions have to be taken for possible landslides and blockages of river flows due to landslides in high ranges of these states.

### 2.2.4 Odisha, Andhra Pradesh & Telangana

Heavy to very heavy with isolated Extremely heavy falls are likely over Odisha, Chhattisgarh, Coastal Andhra Pradesh and Telangana during next 2 days. River Godavari is also getting good flows due to rain in Chhattisgarh, Maharashtra and



Telangana. Polavaram project on River Godavari in Andhra Pradesh is likely to get around 33000 cumec and Laxmi Barrage on River Godavari is likely to get inflows of around 9000 cumec till today night and is expected to rise in view of the rainfall forecast. There is forecast of extremely heavy rainfall for 1 day and heavy to very heavy rainfall in Telangana and Andhra Pradesh also for next 2 days. Close watch is to be maintained. River Indravathi is likely to rise in Nowrangpur District in Odisha and in Bastar, Dantewada, Narayanpur and Bijapur Districts in Chhattisgarh. River Sabari is likely to rise rapidly in Koraput, Malkangiri Districts of Odisha and in Sukma District in Chhattisgarh and East Godavari District of Andhra Pradesh. Inflows into Balimela, Upper Kolab, Machhkund and Upper Indravathi Projects are also likely to rise but the storages in these reservoirs are 25% to 52% only and the inflows will help in increasing the storage in these reservoirs. Due to ongoing extremely heavy rainfall in Brahmani & Baitarni basin, rivers Baitarni and Brahmani have started rising in their source regions and as the rainfall is forecasted to continue today, there is likelihood of rise in water level in river Baitarni in Kendujhar and Bhadrak Districts of Odisha. River Mahanadi is also getting inflows above threshold limits in Hirakud Dam and the dam is likely to continue getting heavy inflows due to extremely heavy rainfall forecasted in Chhattisgarh catchment. Close watch is to be maintained.

River Krishna is also likely to get heavy inflows into P D Jurala in Jogulamba Gadwal District of Telangana and to Srisaillam Dam in Kurnool District of Andhra Pradesh. Since the dam is about 60% filled, it is expected that with inflows for next 4 to 5 days may increase its storage substantially. Due to extremely heavy rainfall in downstream areas of river Krishna in Warangal, Khammam, Nalgonda and Krishna Districts of Telangana and Andhra Pradesh, river Krishna at Prakasam Barrage is getting inflows above its threshold limit and inflow forecasts have been issued for the same.

### 2.2.5 Karnataka & Tamilnadu

Due to continuous inflows from the previous spell of rainfall, most of the dams in Cauvery Basin have reached very close to 90-97% storage. Any local rainfall in association with convective activity may also help in adding to the flow in these basins. Round the clock watch has to be maintained for proper reservoir operation and information to all downstream Districts as well as to lower riparian States well in advance. The releases from Kabini and Krishna Raja Sagar through river are becoming inflows into Mettur Dam which is likely to get slow inflows for next 3-4 days. However, it is much below its FRL.

Most of the dams in Krishna Basin are also having storage between 86% to 97%. Hidkal Dam on River Ghataprabha is filled to 97% of its full capacity and hence close watch has to be maintained for any increased inflows likely due to the very heavy rainfall forecasted in Madhya Maharashtra during the next 2-3 days.

Due to river flows from upstream areas of river Krishna, Almatti Dam and Narayanpur Dam are getting heavy inflows and since these dams are filled around 90% to 92% of the capacity, both the dams are releasing the excess flow. There is forecast of heavy to very heavy rainfall in Madhya Maharashtra for next 4-5 days. Due to this there is likelihood of rise in water levels in Upper Krishna Basin in the upstream of Almatti Dam. Close watch is to be maintained for any releases from all the dams in the basin as well as for proper gate operation following SOP.

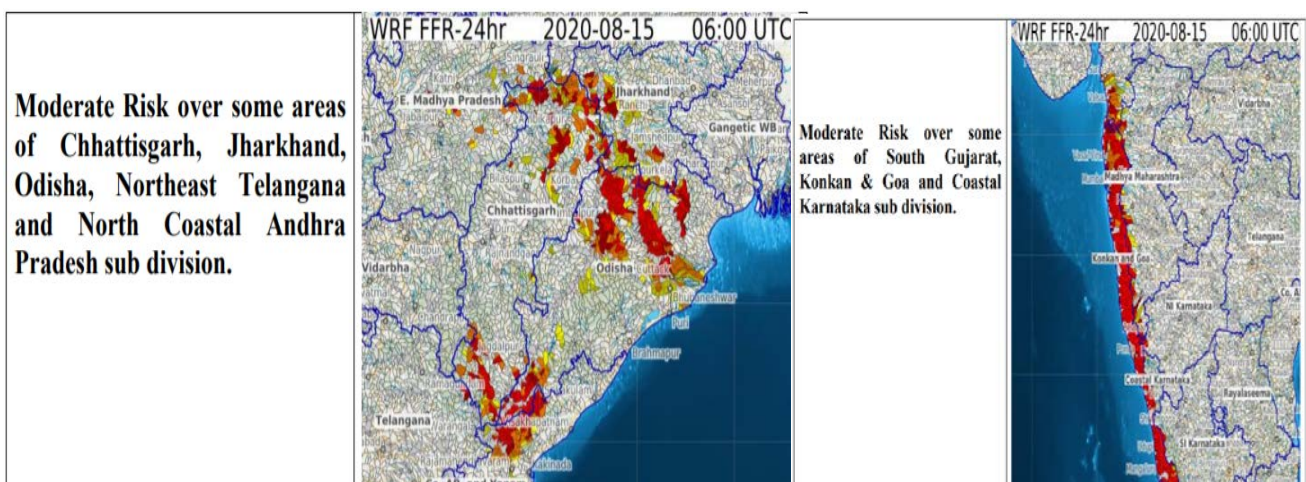
**It is advised that close watch has to be maintained for increased inflows likely during the next 2-3 days. Releases from any of these reservoirs may be done as per rule curve and standard operating procedure.**

### 2.2.6 Bihar, Jharkhand and Gangetic West Bengal

Many of the rivers in Bihar continue to flow in Severe to Above Normal Flood Situation with falling trend. The situation will continue for another 3-4 days.

### 2.2.7 Flash Flood Guidance

Flash Flood Guidance for next 24 hours as issued by IMD is appended.



### **Impact Based Actions**

Strict vigil is to be maintained in all the above States & Districts for next 4-5 days. Breaches in Embankment if any may aggravate further flood like situation which should be monitored and all efforts to fill any such breaches should be done at the earliest. Maximum vigil has to be maintained along the rail and road tracks and bridges on these rivers and regulate traffic suitably to avoid any incident. Submergence of low-level cause ways along rivers and railway tracks along flashy rivers is to be monitored closely especially along Western Ghat areas. All district administrations can take effective measures taking into account the prevailing Covid-19 situation in relief camps being set up in these districts.

### **3. Flood Alerted Districts**

<b>Gujarat:</b>	Districts along Narmada, Tapi, Damanganga, Mahi
<b>Madhya Pradesh:</b>	Districts along Narmada and Upper Chambal, Wainganga, Tapi
<b>Rajasthan:</b>	Districts along Chambal and its tributaries, Mahi
<b>Maharashtra:</b>	Districts along West Flowing Rivers in Thane, Godavari, Damanganga, Krishna & its tributaries
<b>Telangana:</b>	Districts along Godavari and its tributaries
<b>Chhattisgarh:</b>	Districts along Indravathi and its tributaries, Mahanadi & its tributaries
<b>Odisha:</b>	Districts along Indravathi, Sabari, Mahanadi and its tributaries