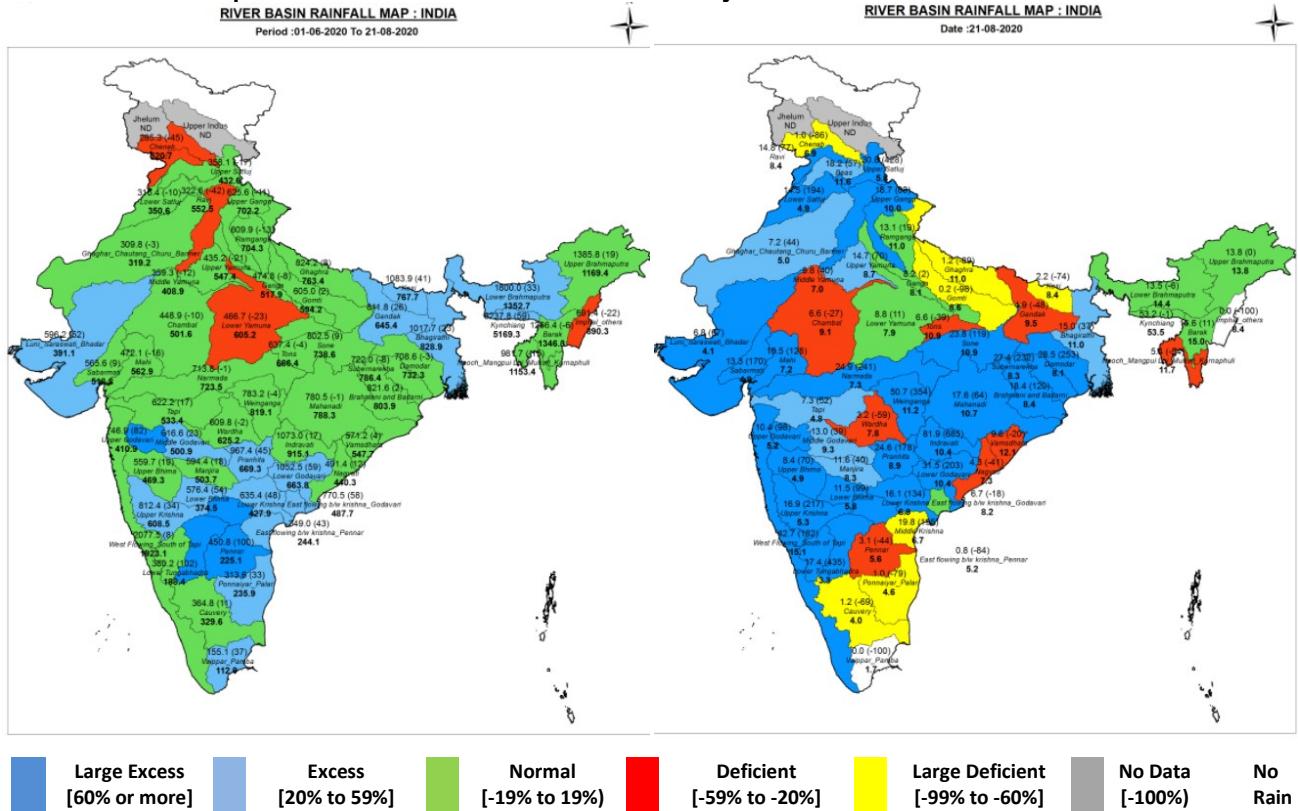




**Central Water Commission**  
**Daily Flood Situation Report cum Advisories**  
**21-08-2020**

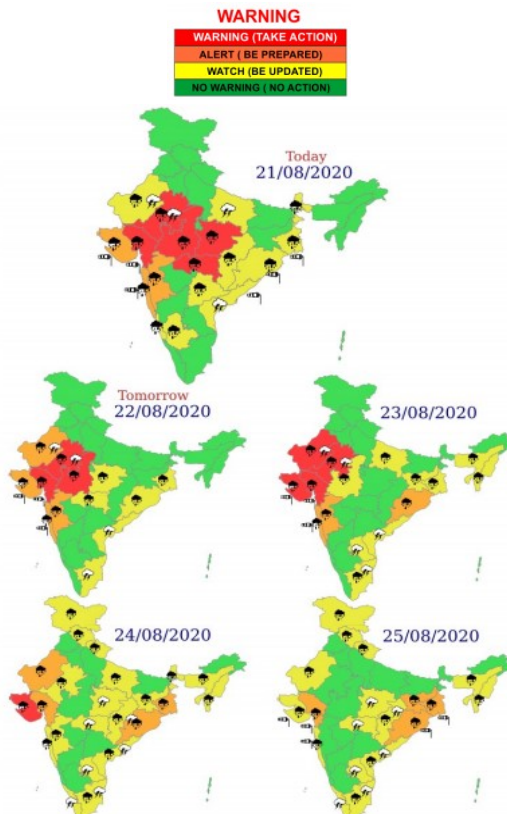
**1.0 IMD information**

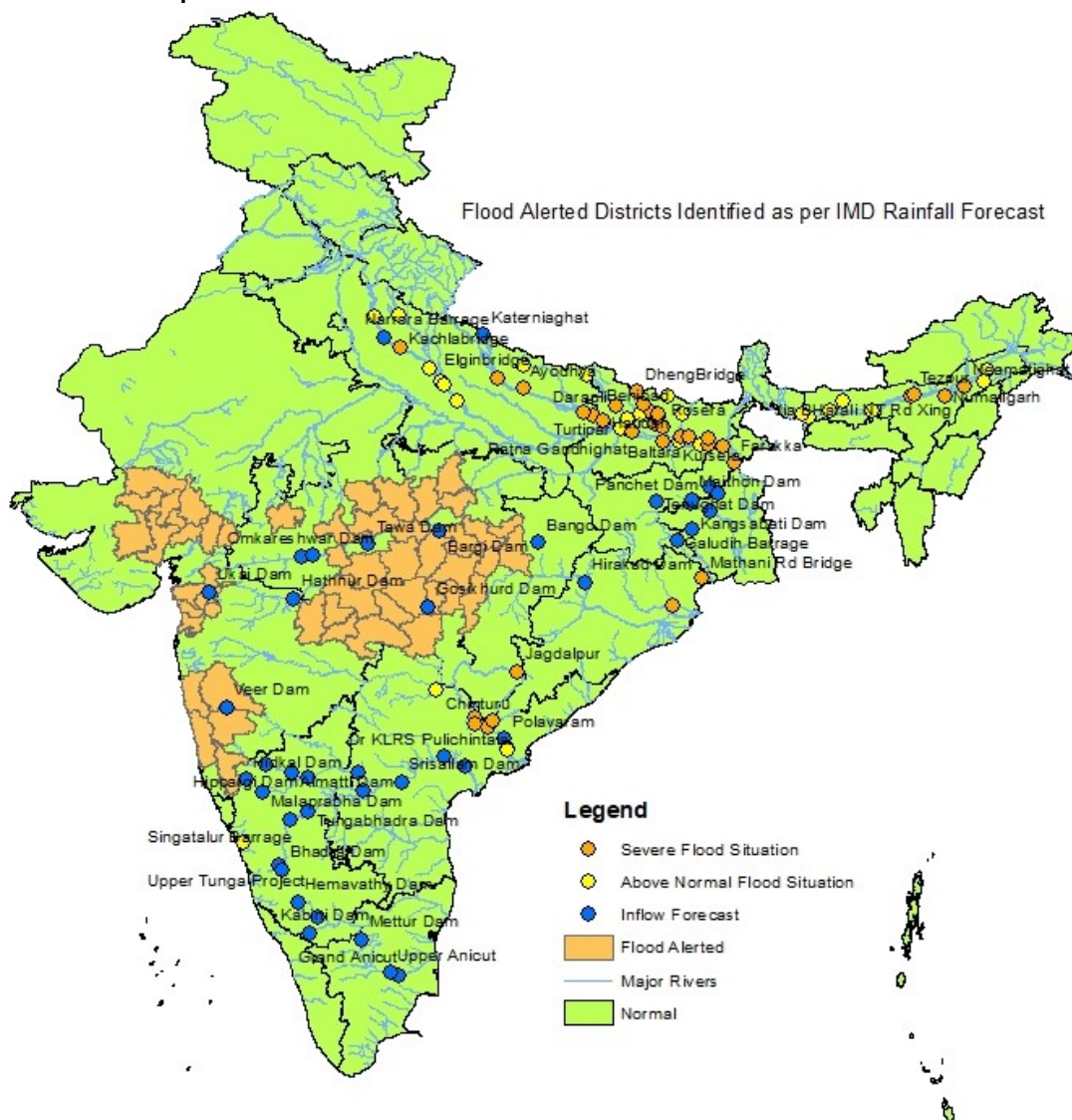
**1.1 Basin wise departure from normal of cumulative and daily rainfall**



Notes: a) Small figures indicate actual rainfall (mm), while bold figures indicate Normal rainfall (mm)  
 b) Percentage departures of rainfall are shown in brackets.

**1.2 Rainfall forecast for next 5 days issued on 21<sup>st</sup> August 2020 (Midday) by IMD**





## 2.2 CWC Advisories

- Widespread rainfall with isolated heavy to very heavy falls very likely over Madhya Pradesh, Vidarbha, Telangana, Gujarat, Maharashtra and Rajasthan during next 3-4 days.
- Isolated extremely heavy falls are likely over East Rajasthan and Gujarat region during 21<sup>st</sup>-23<sup>rd</sup>; over West Madhya Pradesh during 21<sup>st</sup>-22<sup>nd</sup>; over East Madhya Pradesh and Vidarbha on 21<sup>st</sup>; over Madhya Maharashtra during 21<sup>st</sup>-22<sup>nd</sup>; over Saurashtra & Kutch during 23<sup>rd</sup>-24<sup>th</sup> August, 2020.
- Under the influence of likely formation of the Low Pressure Area over Northwest Bay of Bengal, rainfall activity is likely to increase over east & adjoining central India from 23<sup>rd</sup> August. Isolated heavy to very heavy falls very likely over Odisha during 23<sup>rd</sup>-25<sup>th</sup> August, over Gangetic West Bengal on 24<sup>th</sup> & 25<sup>th</sup> and over Jharkhand on 25<sup>th</sup> August.

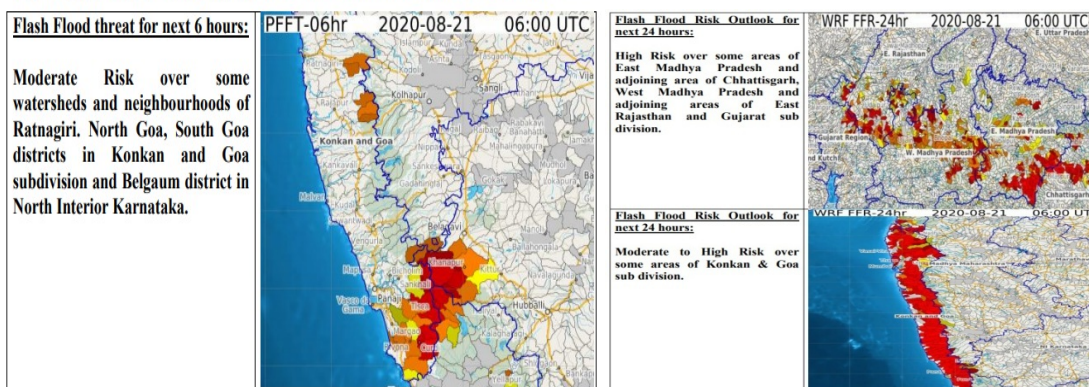
Based on the above rainfall forecast the following advisories are issued by CWC for various States:

- River Godavari & its tributaries** such as **Wainganga, Wardha, Indravathi** and **Sabari** are flowing in Severe Flood Situation with slow rising trend. As the rainfall is likely to reduce, river level is likely to slowly recede during next 2-3 days. Close watch is to be maintained in **Districts of Nowrangpur, Koraput, Malkangiri in Odisha, Bastar, Sukma, Narayanpur, Dantewada, Bijapur in Chhattisgarh, Mandla, Betul, Seoni and Chhindwara Districts in Madhya Pradesh, Bhandara, Gondia, Nagpur, Wardha, Chandrapur and Gadchiroli Districts of Maharashtra, Mulugu, Bhadrachari, Kothagudem in Telangana and East & West Godavari Districts in Andhra Pradesh.**
- River Krishna & its tributaries** such as **Tungabhadra & Bhima** are expected to continue rising slowly and most of the dams in the basin are expected to release considerable quantity of water due to forecasted rainfall. Almost all the dams in Krishna Basin in Maharashtra, Karnataka, Telangana and Andhra Pradesh have reached very close to FRL. Close watch is to be maintained in the Districts of **Pune, Satara, Kolhapur in Maharashtra, Bagalkote, Vijayapura, Raichur, Belagavi in Karnataka, Jogulamba Gadwal and Nalgonda in Telangana, Kurnool, Guntur and Krishna District of Andhra Pradesh.**
- River Narmada and its tributaries** are expected to rise in **Mandla** as well as downstream of Bargi Dam in **Jabalpur District of Madhya Pradesh** as it is releasing excess water.
- River Mahi and its tributaries** are expected to rise. Close watch is to be maintained in the Districts of **Dhar, Jhabua, Ratlam in Madhya Pradesh, Banswara, Dungarpur & Pratapgarh in Rajasthan, Mahisagar, Panchmahal & Kheda in Gujarat**

### 2.2.8 Flash Flood Guidance

Flash Flood Guidance for next 24 hours as issued by IMD is appended.

Flash Flood threat for next 6 hours: Flash Flood Threat for next 6 hours is as follows:



### 2.2.9 Storage Position in Dams where Inflow forecast is being issued by CWC as on 21<sup>st</sup> August 2020

S.No.	River	Station	State	Present Gross Storage (%)	Rainfall Warning
1	Kabini	Kabini Dam	Karnataka	100	Yes
2	Nira	Veer Dam	Maharashtra	100	Yes
3	Cauvery	Krishnarajasagar	Karnataka	100	Yes
4	Purna	Yeldari Dam	Maharashtra	99.29	No
5	Hemavathy	Hemavathy Dam	Karnataka	99	Yes
6	Tungabhadra	Tungabhadra Dam	Karnataka	98	Yes
7	Harangi	Harangi Dam	Karnataka	98	Yes



8	Mula	Mula Dam	Maharashtra	97.24	No
9	Narmada	Bargi Dam	Madhya Pradesh	97	Yes
10	Ghataprabha	Hidkal Dam	Karnataka	96	Yes
11	Wardha	Upper Wardha Project	Maharashtra	94.37	Yes
12	Krishna	Srisailem Dam	Andhra Pradesh	94	No
13	Kalisindh	Kalisindh Dam	Rajasthan	93.78	Yes
14	Pench	Totladoh Project	Madhya Pradesh	94	Yes
15	Godavari	Sripada Yellampally Dam	Telangana	93.06	Yes
16	Bhadra	Bhadra Dam	Karnataka	91	Yes
17	Hasdeo	Bango Dam	Chhattisgarh	90.19	Yes
18	Sone	Bansagar Dam	Madhya Pradesh	90	Yes
19	Malaprabha	Malaprabha Dam	Karnataka	90	Yes
20	Warana	Warana Dam	Maharashtra	90	Yes
21	Koyna	Koyna Dam	Maharashtra	86	Yes
22	Gambhiri	Panchana Dam	Rajasthan	85.67	Yes
23	Sindhpana	Manjlegaon	Maharashtra	84.07	No
24	Betwa	Rajghat Dam	Madhya Pradesh	84	Yes
25	Penganga	Issapur Project	Maharashtra	83.17	Yes
26	Kaddamvagu	Kaddam Dam	Telangana	82.59	Yes
27	Som Kamla	Som Kamla Amba Dam	Rajasthan	81.22	Yes
28	Wainganga	Upper Wainganga Project	Madhya Pradesh	80	Yes
29	Krishna	Almatti Dam	Karnataka	79	No
30	Krishna	Priyadarshini Jurala Project	Telangana	78	Yes
31	Brahmani	Rengali Dam	Odisha	73.8	Yes
32	Chambal	Rana Pratap Sagar	Rajasthan	73.36	Yes
33	Tapi	Ukai Dam	Gujarat	73.19	Yes
34	Godavari	Jaikwadi Dam	Maharashtra	72.46	No

Reservoirs shown in red are having gross storage greater than 90%, reservoirs shown in orange are having gross storage greater than 75% and the reservoirs shown in yellow are having gross storage greater than 70%. Close watch has to be maintained at these reservoirs wherever heavy rainfall (Yellow) and Very Heavy Rainfall (Orange) and Extremely Heavy Rainfall (Red) warning in next 24 hours are given (last column of Table above).

### Impact Based Actions

Strict vigil is to be maintained in all the above States & Districts for next 4-5 days. It is advised that close watch has to be maintained for increased inflows in dams. Releases from any of these reservoirs may be done as per rule curve and standard operating procedure with advance intimation to downstream areas.

Breaches in Embankment if any may aggravate further flood like situation which should be monitored and all efforts to fill any such breaches should be done at the earliest. Maximum vigil has to be maintained along the rail and road tracks and bridges on these rivers and regulate traffic suitably to avoid any incident. Submergence of low-level cause ways along rivers and railway tracks along flashy rivers is to be monitored closely. All district administrations can take effective measures taking into account the prevailing Covid-19 situation in relief camps being set up in these districts.

### 3. Flood Alerted Districts

<b>Gujarat:</b>	Districts along Narmada, Tapi, Damanganga, Mahi, Sabarmati and West Flowing Rivers in Kutch
<b>Madhya Pradesh:</b>	Districts along Narmada and Upper Chambal, Wainganga, Tapi
<b>Rajasthan:</b>	Districts along Chambal and its tributaries, Mahi, Sabarmati, West Flowing Rivers including Luni
<b>Maharashtra:</b>	Districts along West Flowing Rivers, Godavari, Damanganga, Krishna & its tributaries
<b>Telangana:</b>	Districts along Godavari and its tributaries, Krishna & its tributaries
<b>Andhra Pradesh:</b>	Districts along Godavari and its tributaries, Krishna & its tributaries
<b>Chhattisgarh:</b>	Districts along Indravathi and its tributaries, Mahanadi & its tributaries
<b>Odisha:</b>	Districts along Indravathi, Sabari, Mahanadi and its tributaries