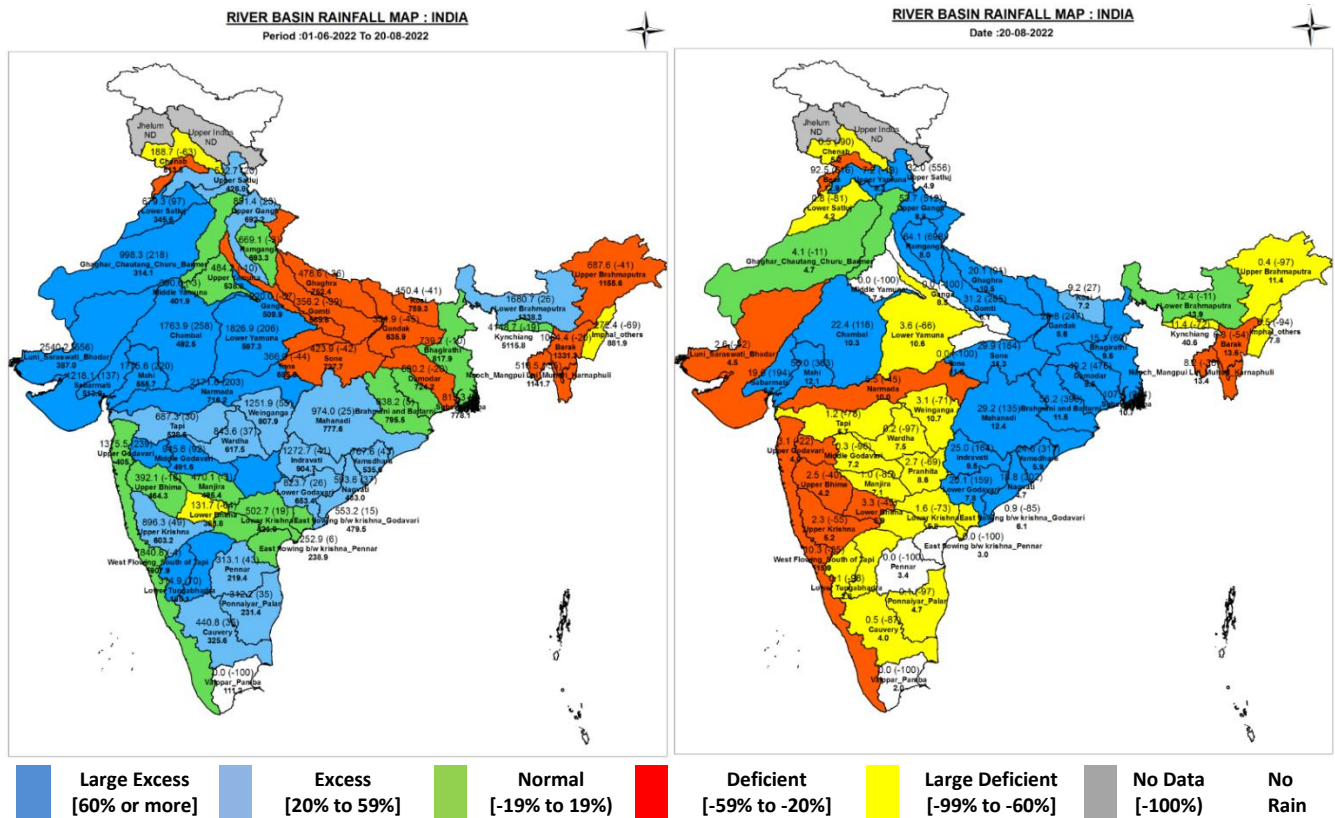




**Central Water Commission**  
**Daily Flood Situation Report cum Advisories**  
**20-08-2022**

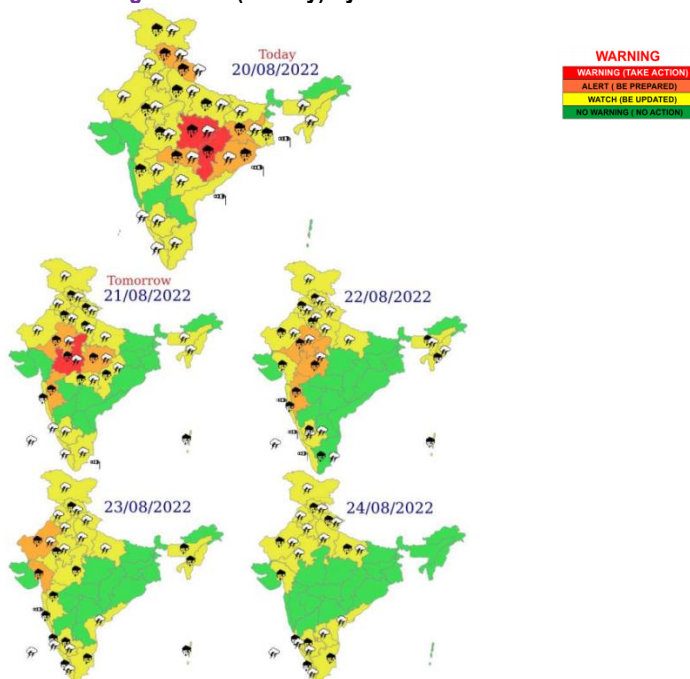
**1.0 Rainfall Situation**

**1.1 Basin wise departure from normal of cumulative and daily rainfall**



Notes: a) Small figures indicate actual rainfall (mm), while bold figures indicate Normal rainfall (mm)  
 b) Percentage departures of rainfall are shown in brackets.

**1.2 Rainfall forecast for next 5 days issued on 20<sup>th</sup> August 2022 (Midday) by IMD**



- Isolated extremely heavy rainfall over East Rajasthan on 22 th; over West Madhya Pradesh on 21st; East Madhya Pradesh and Chhattisgarh on 20 th August, 2022.
- Isolated very heavy rainfall over Himachal Pradesh and Uttarakhand on 20th; West Rajasthan on 23rd; East Rajasthan on 20th & 21st; West Madhya Pradesh on 22nd; East Madhya Pradesh on 21st; Vidarbha, Jharkhand and Odisha on 20th August, 2022.

## 2.0 Flood Situation and Advisories

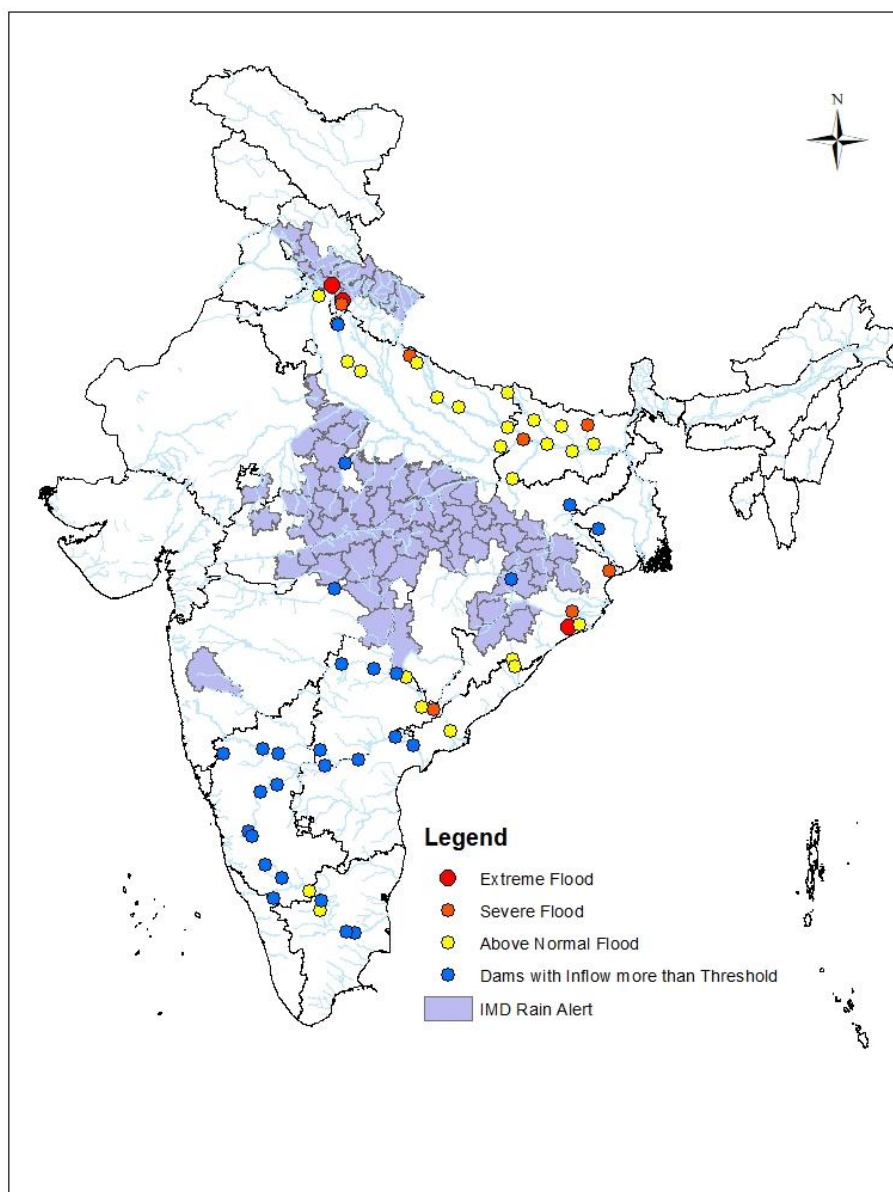
### 2.1 Summary of Flood Situation as per CWC Flood Forecasting Network

On 20<sup>th</sup> August 2022, 05 stations (2 in Odisha, 1 each in Andhra Pradesh, Bihar & Uttar Pradesh) are flowing in Severe Flood Situation, 20 stations (8 in Bihar, 7 in Uttar Pradesh, 3 in Odisha, 1 in Andhra Pradesh & Assam) are flowing in Above Normal Flood Situation). Inflow Forecast has been issued for 30 Barrage & Dams (10 in Karnataka, 5 in Andhra Pradesh & Telangana, 3 in Tamilnadu, 2 in Jarkhand & Uttar Pradesh, 1 each in Maharashtra, Odisha and West Bengal ).

| FLOOD SITUATION SUMMARY  |   |                              |
|--|---|------------------------------|
| PART - I: LEVEL FORECAST   |   |                              |
| S.No.  | Flood Situations  | Numbers of Forecasting Sites |
| <b>A</b>   | Extreme Flood Situation:<br>(Site (s) where the previous Highest Flood Level (HFL) is exceeded or equalled)                           | <b>0</b>                     |
| <b>B</b>   | Severe Flood Situation:<br>(Site (s) where water level is touching or exceeding the Danger Level but below Highest Flood Level (HFL)) | <b>5</b>                     |
| <b>C</b>   | Above Normal Flood Situation:<br>(Site (s) where water level is touching or exceeding the Warning Level but below Danger Level)       | <b>20</b>                    |
| Total number of sites above Warning Level ( A+B+C)   |   | <b>25</b>                    |
| PART - II: INFLOW FORECAST   |   |                              |
| Number of sites for which inflow forecasts issued:<br>(Where Inflows are equal or exceed the specified Threshold Limit for a particular reservoir / barrage) |   | <b>30</b>                    |

Details are given at link: [http://cwc.gov.in/sites/default/files/cfrcwcdfb20-08-2022\\_3.pdf](http://cwc.gov.in/sites/default/files/cfrcwcdfb20-08-2022_3.pdf)

#### 2.1.1 Flood Situation Map



## 2.2 CWC Advisories

### Odisha

IMD has predicted very heavy rains over Odisha and since, the region has already faced a heavy rainfall scenario in immediate past, more alert for water level rise in the rivers may be kept for the incoming rainfall scenario. Rainfall will be witnessed more in Northern rivers of Odisha such as Brahmani, Baitarni & Mahanadi. Hence, alert for water level rise may be kept in rivers, Mahanadi (**Bargarh, Sambalpur, Angul, Sonepur, Boudh, Bolangir, Jharsuguda, Kalahandi, Kandhamal, Nuapada, Sundargarh dists.**), Brahmani & Baitarni (**Keonjhar, Sundargarh, Sambalpur, Deograh dists.**) and their tributaries in above said districts.

| District  | CWC Site          | River                      | Flood Situation | Water level Trend |
|-----------|-------------------|----------------------------|-----------------|-------------------|
| Puri      | Kanas             | Daya (Mahanadi Basin)      | Extreme         | Steady            |
| Baleshwar | Mathani Rd Bridge | Jalka (Subarnarekha basin) | Severe          | Rising            |
| Gajapati  | Kashinagar        | Vamsadhara                 | Severe          | Rising            |
| Cuttack   | Naraj             | Mahanadi                   | Above Normal    | Rising            |
| Baleshwar | Govindpur         | Burhabalang                | Above Normal    | Rising            |
| Rayagada  | Gunupur           | Vamsadhra                  | Above Normal    | Rising            |

### Chhattisgarh

Mahanadi basin is expected to receive extremely heavy rains. Since, the region has already faced a heavy rainfall scenario in immediate past, more alert for water level rise in the rivers may be kept for the incoming rainfall scenario. Hence, alert for water level rise may be kept for rivers Mahanadi and its tributaries in districts **Bilaspur, Mungeli, Korba** districts, river Brahmani in **Jashpur** districts.

### Madhya Pradesh

State in its northern part is expected to receive another extremely heavy to very heavy rainfall spell. Since, the region has already faced a heavy rainfall scenario in immediate past, more alert for water level rise in the rivers may be kept for the incoming rainfall scenario. More rainfall will be witnessed in the catchment of rivers Betwa, Ken, Tons, Sone, upper & middle Narmada and Wainganga basin in first 2 days and then the rainfall will shift to western Madhya Pradesh. Alert for water level rise may be kept in river Narmada in **Narasinghapur, Hoshangabad, Dindori, Jabalpur, Chinndwara, Seoni, Annupur, Harda, Narmadapuramvand Mandla** dists., river Tons in **Satna, Rewa** dists., river Sone in **Shahdol, Annupur, bSidhi, Umaria, Katni and Singrauli** districts, river Sindh in **Morena, Bhind, Gwalior, Datia, Ashoknagar and Vidisha** dists., river Wainganga in **Balaghat, Seoni, Chhindwara, Mandla** dists., river Chambal in **Rajgarh, Agarmalwa, Shajapur, Shehore, Shivpuri, Guna** districts.

### Maharashtra

Wainganaga basin is expected to receive very heavy rains. Since, the region has already faced a heavy rainfall scenario in immediate past, more alert for water level rise in the rivers may be kept for the incoming rainfall scenario. Alert for water level rise may be kept in river Wainganga and its tributaries in districts **Bhandara, Gadchiroli, Nagpur and Gondia**, districts.

### Jharkhand

Due to advent of a pressure system, southern districts of Jharkhand is expected to receive very heavy rains. Alert for water level rise may be kept in rivers Sankh, South Koel, Kharkar and Subarnarekh and its tributaries in districts **Simdege, Gumla, Paschim Singhbhum, Purbi Singhbhum and Saraikela** districts.



## Himachal Pradesh

Alert for water level rise associated with flash floods may be kept in rivers Satiuj, Tons, Beas and its tributaries in districts Hamirpur, Bilaaspur, Champa, Kangra, Mandi, Solan, Shimla and Sirmaur districts.

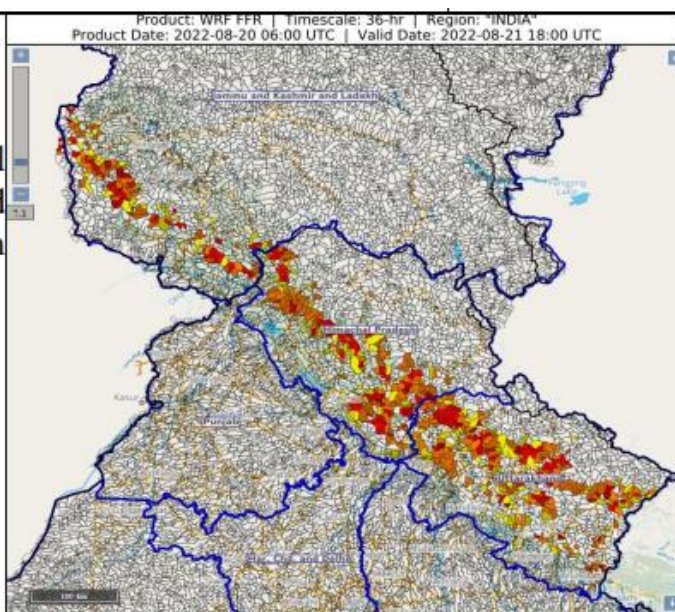
## Uttarakhand

IMD has predicted increased rainfall in most of the districts of Uttarakhand hence keep alert for flash flood occurrences in Gauri Ganga, Ramganga, Kali, Alaknanda and other tributaries of upper Ganga basin in Uttarakhand. At CWC site Kalsi river Amlav (Ganga basin) in **Dehradun** district is flowing in extreme flood situation with steady trend.

### 2.3. Flash Flood Guidance

#### **36 hours Outlook for the Flash Flood Risk (FFR) till 2330 IST of 21.08.2022:**

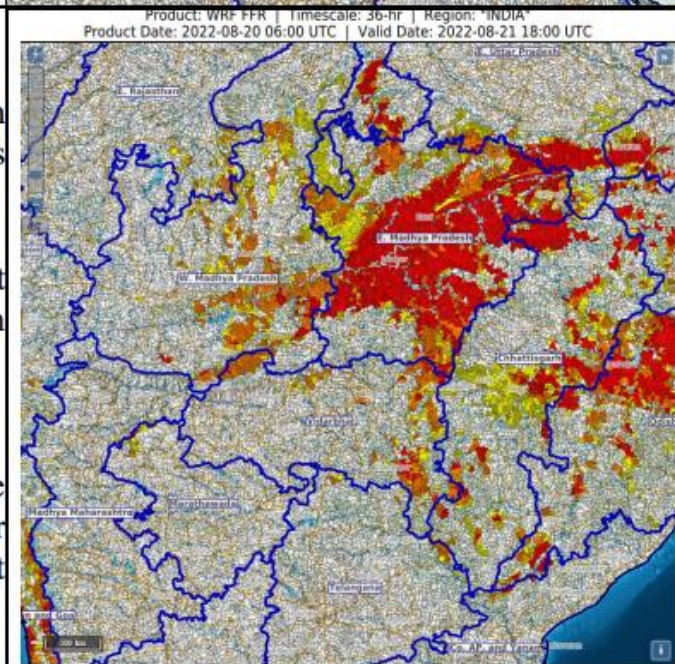
**Moderate** Flash Flood Risk over Himachal Pradesh, Uttarakhand, Himachal Pradesh and Jammu & Kashmir Met Sub-divisions likely in next 36 hours.



**Moderate** Flash Flood Risk over Chhattisgarh and West Madhya Pradesh Met Sub-divisions likely in next 36 hours.

**Moderate to High** Flash Flood Risk over East Madhya Pradesh Met Sub-divisions likely in next 36 hours.

Surface runoff/ Inundation may occur at some fully saturated soils & low-lying areas over AoC as depicted in map due to persistent rainfall in next 24 hours.



### 3.0 Advisory Flood Forecast for next 5-days

The flood situation at Flood Forecasting Stations likely to be above warning level for next 5 days:

| S.No. | Station         | River        | District            | State          | 21-08-2022 | 22-08-2022 | 23-08-2022 | 24-08-2022 | 25-08-2022 |
|-------|-----------------|--------------|---------------------|----------------|------------|------------|------------|------------|------------|
| 1     | KACHHLABRIDGE   | GANGA        | Budaun              | Uttar Pradesh  | S          | S          | S          | S          | S          |
| 2     | NARAJ           | MAHANADI     | Cuttack             | Odisha         | S          | S          | S          | S          | S          |
| 3     | KUNAVARAM       | GODAVARI     | EAST GODAVARI       | ANDHRA PRADESH | S          | S          | S          | S          | S          |
| 4     | BALLIA          | GANGA        | Ballia              | Uttar Pradesh  | S          | S          | S          | AN         | AN         |
| 5     | BANDA           | KEN          | Banda               | Uttar Pradesh  | N          | S          | S          | S          | N          |
| 6     | BASUA           | KOSI         | Supaul              | Bihar          | S          | S          | S          | S          | S          |
| 7     | DELHI_RLY_BRG   | YAMUNA       | North               | NCT of Delhi   | S          | S          | S          | S          | AN         |
| 8     | FATEHGARH       | GANGA        | Farrukhabad         | Uttar Pradesh  | AN         | AN         | AN         | S          | S          |
| 9     | GARHMUKTESHWAR  | GANGA        | Jyotiba Phule Nagar | Uttar Pradesh  | S          | S          | S          | S          | AN         |
| 10    | HARIDWAR        | GANGA        | Hardwar             | Uttarakhand    | S          | N          | N          | N          | N          |
| 11    | HATHIDAH        | GANGA        | Patna               | Bihar          | AN         | S          | S          | S          | S          |
| 12    | KAHALGAON       | GANGA        | Bhagalpur           | Bihar          | N          | N          | AN         | AN         | S          |
| 13    | KHAGARIA        | BURHI GANDAK | Khagaria            | Bihar          | N          | AN         | S          | S          | S          |
| 14    | KURSELA         | KOSI         | Katihar             | Bihar          | N          | N          | AN         | AN         | S          |
| 15    | MANER           | SONE         | Bhojpur             | Bihar          | AN         | AN         | S          | S          | AN         |
| 16    | PATNAGANDHIGHAT | GANGA        | Patna               | Bihar          | S          | S          | S          | S          | S          |
| 17    | RISHIKESH       | GANGA        | Dehradun            | Uttarakhand    | S          | N          | N          | N          | N          |
| 18    | RUNISAIDPUR     | BAGMATI      | Sitamarhi           | Bihar          | AN         | AN         | AN         | AN         | S          |
| 19    | DHOLPUR         | CHAMBAL      | Dholpur             | Rajasthan      | N          | N          | N          | AN         | S          |
| 20    | ANANDPUR        | BAITRANI     | Kendujhar           | Odisha         | S          | N          | N          | N          | N          |
| 21    | AKHUAPADA       | BAITRANI     | Jajapur             | Odisha         | S          | S          | N          | N          | N          |
| 22    | MANDLA          | NARMADA      | Mandla              | Madhya Pradesh | N          | S          | S          | S          | N          |
| 23    | HOSHANGABAD     | NARMADA      | Hoshangabad         | Madhya Pradesh | N          | N          | S          | S          | N          |
| 24    | BHARUCH         | NARMADA      | Bharuch             | Gujarat        | N          | N          | N          | S          | S          |
| 25    | PURUSHOTTAMPUR  | RUSHIKULYA   | Ganjam              | Odisha         | S          | N          | N          | N          | N          |
| 26    | GUNUPUR         | VAMSADHARA   | Rayagada            | Odisha         | S          | N          | N          | N          | N          |
| 27    | KASHINAGAR      | VAMSADHARA   | Srikakulam          | Andhra Pradesh | S          | N          | N          | N          | N          |
| 28    | SRIKAKULAM      | NAGAVALLI    | Srikakulam          | Andhra Pradesh | S          | AN         | N          | N          | N          |

|    |                  |             |                          |                   |    |    |    |    |    |
|----|------------------|-------------|--------------------------|-------------------|----|----|----|----|----|
| 29 | MATHANIRB        | JAMIRA      | Baleshwar                | Odisha            | S  | S  | S  | S  | S  |
| 30 | ALIPINGAL        | DEVI        | Jagatsinghapur           | Odisha            | AN | AN | AN | AN | AN |
| 31 | NIMAPARA         | KUSHABHADRA | Puri                     | Odisha            | AN | AN | AN | AN | AN |
| 32 | BHADRACHALAM     | GODAVARI    | BHADRADRI<br>KOTHAGUEDEM | TELANGANA         | AN | AN | AN | AN | AN |
| 33 | DOWLAISWARAM     | GODAVARI    | EAST GODAVARI            | ANDHRA<br>PRADESH | AN | AN | AN | AN | AN |
| 34 | ANKINGHAT        | GANGA       | Hardoi                   | Uttar Pradesh     | N  | N  | N  | AN | AN |
| 35 | AYODHYA          | GHAGRA      | Faizabad                 | Uttar Pradesh     | AN | AN | AN | AN | AN |
| 36 | BALTARA          | KOSI        | Khagaria                 | Bihar             | AN | AN | AN | AN | AN |
| 37 | BENIBAD          | BAGMATI     | Muzaffarpur              | Bihar             | AN | AN | AN | AN | AN |
| 38 | BHAGALPUR        | GANGA       | Bhagalpur                | Bihar             | N  | N  | AN | AN | AN |
| 39 | BUXAR            | GANGA       | Buxar                    | Bihar             | AN | AN | N  | N  | N  |
| 40 | DIGHAGHAT        | GANGA       | Patna                    | Bihar             | AN | AN | AN | AN | AN |
| 41 | ELGINBRIDGE      | GHAGRA      | Bahraich                 | Uttar Pradesh     | AN | AN | AN | AN | AN |
| 42 | GHAZIPUR         | GANGA       | Ghazipur                 | Uttar Pradesh     | AN | AN | N  | N  | N  |
| 43 | HAJIPUR          | GANDAK      | Saran (chhapra)          | Bihar             | N  | N  | AN | AN | AN |
| 44 | JHANJHARPUR      | KAMLA       | Madhubani                | Bihar             | AN | AN | AN | N  | AN |
| 45 | KHADDA           | GANDAK      | Kushinagar               | Uttar Pradesh     | AN | N  | N  | N  | N  |
| 46 | MATHURA_PG       | YAMUNA      | Mathura                  | Uttar Pradesh     | N  | N  | AN | AN | AN |
| 47 | MUNGER           | GANGA       | Munger                   | Bihar             | N  | N  | AN | AN | AN |
| 48 | SAHIBGANJ        | GANGA       | Sahibganj                | Jharkhand         | N  | N  | N  | AN | AN |
| 49 | TURTIPAR         | GHAGARA     | Ballia                   | Uttar Pradesh     | AN | AN | AN | AN | AN |
| 50 | DUMARIAGHAT      | GANDAK      | Gopalganj                | Bihar             | AN | AN | AN | AN | N  |
| 51 | DHENG_BRIDGE     | BAGMATI     | Sitamarhi                | Bihar             | AN | AN | AN | AN | AN |
| 52 | BEKI_NH_CROSSING | BEKI        | Barpeta                  | Assam             | AN | AN | AN | AN | AN |
| 53 | KHOWANG          | BURIDEHING  | Dibrugarh                | Assam             | N  | N  | N  | N  | AN |
| 54 | NUMALIGARH       | DHANSARI    | Golaghat                 | Assam             | N  | N  | N  | AN | AN |
| 55 | SHIVSAGAR        | DIKHOW      | Shivsagar                | Assam             | N  | N  | N  | N  | AN |
| 56 | ARARIA           | PARMAN      | Araria                   | Bihar             | AN | AN | AN | N  | AN |

**Abbreviation:** N: Normal Flood Situation, AN: Normal Flood Situation, S: Severe Flood Situation, E: Extreme Flood Situation

For more details, please visit <https://ffs.india-water.gov.in/> for flood forecast monitoring & short range flood forecast and <https://aff.india water.gov.in/> for medium range flood forecast.

Extreme Flood Situation: (Site (s) where the previous Highest Flood Level (HFL) is exceeded or equalled).

Severe Flood Situation: (Site (s) where water level is touching or exceeding the Danger Level but below Highest Flood Level (HFL)).

Above Normal Flood Situation: (Site (s) where water level is touching or exceeding the Warning Level but below Danger Level).

#### 4.0 Storage Position in Dams where Inflow forecast is being issued by CWC as on 20<sup>th</sup>August2022

|                   |  |
|-------------------|--|
| Storage above 85% |  |
| Storage above 60% |  |

|                     |   |        |       |       |       |       |        |      |
|---------------------|---|--------|-------|-------|-------|-------|--------|------|
| QPF categories (mm) | 0 | 0.1-10 | 11-25 | 26-37 | 38-50 | 51-75 | 76-100 | >100 |
|---------------------|---|--------|-------|-------|-------|-------|--------|------|

| #  | Reservoir/Dams     | River/Sub-Basin /Basin  | State  | US/ DS District  | Rainfall situation |       |       |       |       |
|----|--------------------|---|--------|--|--------------------|-------|-------|-------|-------|
|    |                    |   |        |  | Day 1              | Day 2 | Day 3 | Day 4 | Day 5 |
| 1  | Pulichinthala      | Krishna/Lower Krishna/ Krishna  | AP     | Nalgonda(Tel)/Guntoor,Krishna (AP)   |                    |       |       |       |       |
| 2  | Srisaillam         | Krishna/Lower Krishna/Krishna   | AP     | JogulambaGadwal(Telangana), Kurnool(AP)/ Nalgonda(Telangana), Guntoor (AP) |                    |       |       |       |       |
| 3  | Somasila           | Pennar/Lower Pennar/Pennar  | AP     | Kadapa(AP)/Nellore(AP)   |                    |       |       |       |       |
| 4  | Madduvalasa        | Nagavalli/Nagavalli/EFR Mahanadi & Godavari                             | AP     | Vizianagaram(AP)/Srikakulam(AP)  |                    |       |       |       |       |
| 5  | Musi               | Musi/Lower Krishna/ Krishna   | Tel    | Nalgonda   |                    |       |       |       |       |
| 6  | Sriramasagar       | Godavari/Middle Godavari/Godavari                                       | Tel    | Nanded (Mah), Nirmal(Telangana)/Metpally, Mancherial(Telangana)            |                    |       |       |       |       |
| 7  | SripadaYellampally | Godavari/Middle Godavari/Godavari                                       | Tel    | Mancherial/JaishankarBhupalpally   |                    |       |       |       |       |
| 8  | Singur             | Manjira/Manjira/Godavari  | Tel    | Bidar(Kar)/Sangareddy(Telangana)   |                    |       |       |       |       |
| 9  | Nizamsagar         | Manjira/Manjira/Godavari  | Tel    | Medak/Kamareddy  |                    |       |       |       |       |
| 10 | PD Jurala          | Krishna/Middle Krishna/Krishna  | Tel    | Raichur (Kar)/JogalambaGadwal(Telangana)                                   |                    |       |       |       |       |
| 11 | Ukai               | Tapi/Tapi/Tapi  | Guj    | Nadurbar(Mah), Tapi(Guj)/ Surat (Guj)                                      |                    |       |       |       |       |
| 12 | Narayanpur         | Krishna/Upper Krishna/Krishna   | Kar    | Bagalkot, Vijayapura/ Raichur, Yaadgir                                     |                    |       |       |       |       |
| 13 | Harangi            | Cauvery/Upper Cauvery/Cauvery   | Kar    | Kodagu/Mandya  |                    |       |       |       |       |
| 14 | Hemavathy          | Hemavathy/ Hemavathy/Cauvery  | Kar    | Hassan, Kodagu/Mandya, Mysore  |                    |       |       |       |       |
| 15 | Karanja            | Karanja/Manjira/Godavari  | Kar    | Bidar (Kar), Vikarabad(Telangana)/Bidar(Kar)                               |                    |       |       |       |       |
| 16 | Tungabhadra        | Tungabhadra/Middle Tungabhadra/Krishna                                  | Kar    | Gadag/Bellary, Koppal, Raichur   |                    |       |       |       |       |
| 17 | Kabini             | Kabini/Kabini/Cauvery   | Kar    | Wayanad (Kar)/Mysuru(Kar)  |                    |       |       |       |       |
| 18 | Bhadra             | Bhadra/UpperTungabhadra/Krishna   | Kar    | Chikmagaluru/Shimoga   |                    |       |       |       |       |
| 19 | KRS                | Cauvery/Middle Cauvery/Cauvery  | Kar    | Mandya, Mysore   |                    |       |       |       |       |
| 20 | Malaprabha         | Malaprabha/Malaprabha/Krishna   | Kar    | Belgaum  |                    |       |       |       |       |
| 21 | Hidkal             | Ghataprabha/Ghataprabha/Krishna   | Kar    | Kolhapur (Mah)/ Belgaum (Kar)  |                    |       |       |       |       |
| 22 | Almatti            | Krishna/Upper Krishna/Krishna   | Kar    | Kolhapur(Maharashtra)/ Bagalkote(Karnataka)                                |                    |       |       |       |       |
| 23 | Idukki             | Periyar/Upper Periyar/West flowing rivers from Tadri to Kanyakumari     | Kerala | Theni (Tamil Nadu), Ernakulam  |                    |       |       |       |       |
| 24 | Edamalayar         | Edamalayar/Middle Periyar/West flowing rivers from Tadri to Kanyakumari | Kerala | Coimbatore (Tamil Nadu)  |                    |       |       |       |       |
| 25 | Koyna              | Koyna/Upper Krishna/Krishna   | Mah    | Satara/Kolhapur, Sangli  |                    |       |       |       |       |
| 26 | Warana             | Warna river/Upper Krishna/Krishna                                       | Mah    | Sangli,Kolhapur  |                    |       |       |       |       |
| 27 | Veer               | Nira/Upper Bhima/Krishna  | Mah    | Pune, Satara   |                    |       |       |       |       |
| 28 | Ujjani             | Bhima/Upper Bhima/Krishna   | Mah    | Pune, Solapur  |                    |       |       |       |       |
| 29 | Yeldari            | Purna/Purna/Godavari  | Mah    | Hingoli, Parbhani/Nanded   |                    |       |       |       |       |
| 30 | Upper Wardha       | Wardha/Wardha/Godavari  | Mah    | Wardha, Amravati   |                    |       |       |       |       |
| 31 | Issapur            | Kayadhu/Penganga/Godavari   | Mah    | Hingoli, Yavatmal  |                    |       |       |       |       |
| 32 | Totladoh           | Pench/Wainganga/Godavari  | Mah    | Chindwara(MP)/Nagpur(Mah)  |                    |       |       |       |       |
| 33 | Jaikwadi           | Godavari/Upper Godavari/Godavari  | Mah    | Aurangabad, Ahmadnagar/Bid, Jalna  |                    |       |       |       |       |
| 34 | Mula               | Mula/Upper Godavari/Godavari  | Mah    | Ahmadnagar   |                    |       |       |       |       |
| 35 | Salandi            | Salandi/Brahmani and Baitarni/Brahmani and Baitarni                     | Odisha | Mayurbhanj,Kendujhar/Bhadrak   |                    |       |       |       |       |
| 36 | Hirakud Dam        | Mahanadi/Lower Mahanadi/Mahanadi  | Odisha | Bargarh/Sambalpur  |                    |       |       |       |       |
| 37 | Ravi Shankar       | Mahanadhi/Upper Mahanadi/Mahanadi                                       | Chhatt | Kanker/Gariaband   |                    |       |       |       |       |
| 38 | Bhavanisagar       | Bhavani/Middle Cauvery/Cauvery  | TN     | Palakad (Kerala), Nilgiri(TN), Coimbatore (TN)/ Erode (TN)                 |                    |       |       |       |       |
| 39 | Mettur             | Cauvery/Middle Cauvery/Cauvery  | TN     | Dharmapuri, Salem/Erode, Namakkal  |                    |       |       |       |       |

|    |                     |   |     |  |  |  |  |  |  |
|----|---------------------|---|-----|--|--|--|--|--|--|
| 40 | Vaigai              | Vaigai/Upper Vaigai/East flowing rivers South of Cauvery Basin                    | TN  | Theni/Madurai  |  |  |  |  |  |
| 41 | Sathanur Dam        | Ponnaiar/Middle South Pennar/East flowing rivers between Pennar and Cauvery Basin | TN  | Dharmapuri, Tiruvannamalai/Villupuram, Cuddalore             |  |  |  |  |  |
| 42 | SomKamlaAmba        | Som/Mahi B/Mahi   | Raj | Udaipur/Dungarpur  |  |  |  |  |  |
| 43 | RanaPratapSagar     | Chambal/Upper Chambal/Ganga   | Raj | Neemuch(MP)/Dholpur, Kota, Bundi(Raj)                        |  |  |  |  |  |
| 44 | Gudha               | Mejchambal/Upper Chambal/Ganga  | Raj | Bhilwara/Bundi   |  |  |  |  |  |
| 45 | Parwati             | Parbati/ Kalisindh/Upper Chambal  | Raj | Baran (Raj)/Baran (Raj), Kota (Raj), Sheopur (MP)            |  |  |  |  |  |
| 46 | Mahi Bajajsagar Dam | Mahi/ Mahi Basin  | Raj | Ratlam(MP)/Banswara, Pratapgarh,Dungapur (Raj)               |  |  |  |  |  |
| 47 | Gandhisagar         | Chambal/Upper Chambal/Ganga   | MP  | Mandsaur,Neemuch(MP)/Dholpur(Raj)                            |  |  |  |  |  |
| 48 | Tawa                | Tawa/Middle Narmada/Narmada   | MP  | Betul,Hoshnabad/Sehore                                       |  |  |  |  |  |
| 49 | Rajghat             | Betwa/Betwa/Ganga   | MP  | Ashoknagar(MP), Lalitpur(UP)/Shivpuri, Lalitpur(UP)          |  |  |  |  |  |
| 50 | Barna               | Barna/Middle Narmada/Narmada  | MP  | Raisen/Hoshangabad,Narsinghpur                               |  |  |  |  |  |
| 51 | Indira Sagar        | Narmada/Narmada b/w Hosangabad to SSP/Narmada                                     | MP  | Harda, Dewas, Khandwa/Khargone                               |  |  |  |  |  |
| 52 | Upper Wainganga     | Wainganga/Wainganga/Godavari  | MP  | Seoni/Balaghat   |  |  |  |  |  |
| 53 | Sardar Sarovar      | Narmada/Narmada b/w Hosangabad to SSP/Narmada                                     | Guj | Narmada( Guj), Nadurbar( MP)/Narmada, Vadodra, Bharuch (Guj) |  |  |  |  |  |
| 54 | Kadana Dam          | Mahi/Middle Mahi/Mahi Basin   | Guj | Banswara (Raj)/Mahisagar,Panchmahals(Guj)                    |  |  |  |  |  |
| 55 | Dharoi Dam          | Sabarmati /Middle Sabarmati/Sabarmati Basin                                       | Guj | Sabarkantha/Mehsana (Guj)                                    |  |  |  |  |  |

Note- Based on above information, Project Authority may regulate the reservoirs as per standard operating manuals/ rule levels to avoid downstream flooding and upstream submergence.