



**भारत सरकार**  
**GOVERNMENT OF INDIA**

# **सरयू नहर परियोजना की प्रथम प्रबोधन रिपोर्ट**

**FIRST MONITORING REPORT  
ON  
SARYU NAHAR PARIYOJANA, UTTAR PRADESH**



**ऊपरी गंगा बेसिन संगठन**  
**UPPER GANGA BASIN ORGANISATION**  
**केन्द्रीय जल आयोग**  
**CENTRAL WATER COMMISSION**

**लखनऊ / LUCKNOW**

**अक्टूबर / OCTOBER, 2020**

**Date of visit to the project: 16.09.2020**

**Officers who participated in the Visit**

**Officers from UGBO, CWC Lucknow**

1. Sh. Anupam Prasad, CE, UGBO, CWC, Lucknow
2. Sh. B C Vishwakarma, Director (M&A), CWC Lucknow
3. Ms. Deepti Verma, Deputy Director, M&A Dte. CWC Lucknow
4. Ms. Nisha Singh, Assistant Director, M&A Dte. CWC Lucknow

**Officers from Irrigation Department, Govt. of Uttar Pradesh**

1. Sh. Rakesh Kumar, CE, Saryu Nahar Pariyojna-2, Gonda
2. Sh. Devesh Shukla, SE, Rapti Nahar Nirman Mandal-2, Basti
3. Sh. Neelesh Jain, SE, Rapti Nahar Nirman Mandal-1, Balrampur
4. Sh. Dinesh Kumar, EE, Saryu Nahar Khand – 3, Gonda
5. Sh. R.C. Verma, EE, Saryu Nahar Khand – 5, Gonda
6. Sh. Surendra Prasad, EE, Rapti Nahar Nirman Khand-1, Tulsipur, Balrampur
7. Sh. Santosh Kumar, EE, Rapti Nahar Nirman Khand-2, Tulsipur, Balrampur
8. Sh. D P Verma, EE, Rapti Nahar Nirman Khand-2, Sohratgarh, Sidharth Nagar
9. Sh. Sanjay Kumar, Saryu Nahar Khand, Bansi, Sidharth Nagar
10. Other concerned Engineering and technical staff

## INDEX

PARA NO.	DESCRIPTION	PAGE NO.
<b>PART-I : EXECUTIVE SUMMARY</b>		
1.0	PROJECT IN BRIEF	1-2
2.0	PHYSICAL AND FINANCIAL PROGRESS	2
3.0	ISSUES IN FOCUS	2-3
4.0	ASSESSMENT OF THE PROJECT	3-4
<b>PART-II : MONITORING REPORT</b>		
<b>CHAPTER-1: PROJECT DETAILS</b>		
1.1	PROJECT COMPONENTS AS BEING EXECUTED	5-6
1.2	INCLUSION OF PROJECT UNDER NATIONAL PROJECT SCHEME	6-7
1.3	DIFFERENT PHASES OF PROJECT IMPLEMENTATION	7-9
<b>CHAPTER-2: PROJECT IMPLEMENTATION STATUS</b>		
2.1	CHANGE IN SCOPE, IF ANY	10
2.2	COST REVISIONS	11
2.3	ORGANIZATIONAL SET UP FOR THE PROJECT	11-12
2.4	CONTRACTUAL ARRANGEMENT	12
2.5	QUALITY ASSESSMENT	12
2.6	LAND ACQUISITION, RESETTLEMENT & REHABILITATION	13
2.7	ENVIRONMENT AND FOREST CLEARANCE	13
2.8	PROPOSAL UNDER NATIONAL PROJECT AND OPTIMIZATION	13-14
2.9	LATEST ESTIMATED COST	14
2.10	FAST TRACK PROFORMA CLEARANCE (FTPC) OF THE PROJECT	15
2.11	EXTERNAL ASSISTANCE / CENTRAL ASSISTANCE	15-16
<b>CHAPTER-3: PROJECT IMPLEMENTATION PROGRESS</b>		
3.1	PHYSICAL AND FINANCIAL PROGRESS OF DIFFERENT COMPONENTS OF THE PROJECT	17
3.2	PROJECT POTENTIAL	18
3.3	FINANCIAL PROGRAMME AND PROGRESS	19
3.4	FINANCIAL MANAGEMENT	19
3.5	MONITORING OF PROJECT AT STATE /PROJECT LEVEL	20

PARA NO.	DESCRIPTION	PAGE NO.
	<b>CHAPTER-4: OBSERVATIONS/ SUGGESTIONS BASED ON SITE VISIT</b>	
4.1	OBSERVATIONS/ SUGGESTIONS	21-28
<b>PART-III : SCHEMATIC DIAGRAMES &amp; INDEX MAP</b>		
FIGURE-1	SCHEMATIC DIAGRAM OF SARYU NAHAR PARIYOJANA	29-30
FIGURE-2	INDEX MAP	31
FIGURE-3	SCHEMATIC DIAGRAM OF CAMPIERGANJ BRANCH SYSTEM	32
<b>PART-IV : PHOTOGRAPHS</b>		
	PHOTOGRAPHS OF SOME OF THE VISTED SITES	33-39
<b>PART-V : ANNEXURES</b>		
ANNEXURE NO.	DETAILS OF ANNEXURE	PAGE NO.
ANNEXURE-1	SALIENT FEATURES OF THE PROJECT	40-41
ANNEXURE-2	EFC DOCUMENT	42-52
ANNEXURE-3	FAST TRACK PROFORMA CLEARANCE BY CWC	52-55
ANNEXURE-4	ORGANIZATION CHART	56-58
ANNEXURE-5	U.P. GOVERNMENT ORDER REGARDING COST APPROVAL OF THE PROJECT	59-62
ANNEXURE-6	TEMPLATE OF MoWR, RD & GR FOR CA CALCULATION	63



# **PART- I**

# **EXECUTIVE SUMMARY**

## **PART-I**

### **EXECUTIVE SUMMARY**

#### **1.0 PROJECT IN BRIEF**

The Saryu Nahar Pariyojana was originally conceived as Left Bank Ghaghara Canal project in the year 1974 to irrigate 267.00 Th ha in the districts of Bahraich and Gonda. It was reformulated in 1980 by changing and enlarging its scope and was renamed as Saryu Nahar Pariyojana. The project interlinks 5 rivers i.e. Ghaghra, Saryu, Rapti, Banganga and Rohini in the Ghaghra basin. In this project 360 cumecs of water is transferred from Girija barrage on river Ghaghra to Saryu barrage on river Saryu through Saryu Link Channel (SLC). Saryu Main Canal (SMC), offtakes from the left bank of Saryu barrage and feed Rapti Link Channel (RLC), which offtakes at 34.7 Km of SMC that transfers 95 cumecs of water from the SMC to the Rapti barrage on river Rapti. Rapti Main Canal (RMC) with designed capacity of 95 cumecs at its head and 126.45 km in length offtakes from Rapti barrage and finally joins the right bank of Banganga river at upstream of existing Banganga Barrage. Campierganj Branch with designed capacity of 55.64 cumecs at its head and 62.107 km length, offtakes from left bank of Banganga River and finally outfall in Rohin River.

The Gross Command Area (GCA) under entire Saryu Nahar Pariyojna is 16.0 Lakhs Ha while the Culturable Command Area (CCA) is 11.29 Lakh Ha. The Ultimate Irrigation Potential of the whole project is 14.04 Lakh ha. The intensity of Irrigation is therefore 124%.

The project was included under AIBP in the year 1996-97 and remained under AIBP till the year 2011-12. The AIBP component of the project was declared to be completed in the Year 2012 with IP creation of 9.31 Lakh ha under AIBP.

After declaration of completion of AIBP components, the balance works of the project were included under the National Projects scheme in 2012 with an estimated cost of Rs. 3011.53 Cr with the targeted creation of Irrigation Potential of 4.73 lakh Ha (total 14.04 lakh ha – 9.31 lakh ha. created upto phase-II under AIBP) with CCA of 4.047 Lakh Ha. This included works under

phase-III (Rapti Main Canal and its distributaries) and remaining works under phase-II.

At present, the total CCA that was proposed to be covered under NP has been reduced to 3.337 Lakh ha from 4.047 lakh ha, though the proposed IP has been kept unchanged as 4.73 Lakh ha.

A line diagram as well as a map showing the overview of the project including the headworks, canal systems and their command areas are placed at **Figure-1** and **Figure-2** respectively and layout diagram of Campierganj system at **Figure-3** in **Part-III** of this report.

The Salient Features of the project are given in **Annexure-1**.

## 2.0 PHYSICAL AND FINANCIAL PROGRESS

The physical progress of the National Project Part up to the period ending July, 2020 is reported more than 85% whereas the financial progress for the year 2020-21 up to 31<sup>st</sup> July, 2020 is reported as Rs.93.48crore. Total expenditure done on the project till 31<sup>st</sup> July, 2020 is Rs.5098.51 crore out of the total estimated cost of Rs. 5803.61 Crore (nearly 87.85%).

Amount in Rs. Crore

Table-1: Cost of NP components, Expenditure Incurred and Balance Cost					
Sl. No.	Year of Inclusion under National Project	Estimated Cost of works as approved in 2017		Expenditure incurred up to 07/2020 under NP	Balance cost of NP as on 07/2020
		Whole Project	NP component		
1	2	3	4	5	6
1	2012-13	9802.6750	5803.61	5098.51	705.10

## 3.0 ISSUES IN FOCUS

- i. Substantial progress has been made in the project although the construction work got delayed due to COVID-19 situation. The target date of completion was revised to March, 2021. Considering the timeline of the project, the Project Authorities need to maintain the pace of construction works to complete the project as early as possible.

- ii. A commendable progress has been achieved in land acquisition front, as per the physical progress reported of the project by 31<sup>st</sup> July, 2020, about 68.042Ha of land is yet to be acquired.
- iii. There are 3 railway crossings in the project. Diversion works at the railway crossings have been started by Railway Department. The work was delayed due to various reasons with railway department as well due to onset of monsoon. Due priority needs to be given to the progress of work.
- iv. About 10.45 ha of forest land at various chainages is yet to be acquired. Stage I clearance at two locations has been obtained although wildlife clearance is still awaited. Due priority needs to be given to acquire balance forest land to complete the project in time.
- v. As per the Work Programme of CAD&WM works submitted by State Government, the works for 1.44 Lakh Ha CCA has been taken up during 2019-20, however, the work of CAD&WM could not be initiated despite budget provision of Rs. 500 Crore for it in FY 2019-20. Rs. 150 Crore as Central Assistance has also been sanctioned for CAD&WM works. As per the latest status received from the CADA officials, the proposal for release of about Rs. 125 Crore against the budget provision of Rs. 500 Crores is in advance stage as State Share. The work of Survey and Investigation for 1.44 lakh ha has been reported as completed and the details were uploaded in the web portal of MIS. However, no physical works are undertaken yet. The same needs to be expedited.
- vi. The data on MIS are not being updated regularly. Project Authorities need to ensure feeding of up to date data in MIS system on regular basis including employment generation.
- vii. Compliance of CWC observations on Hydrology, Irrigation Planning, etc. as mentioned in FTPC dated 17.01.2018 needs to be expedited.

## 4.0 ASSESSMENT OF THE PROJECT

The target date for completion of the project earlier was December, 2019, which has already been passed. As per the assessment made by the project authorities during the visit, it was

informed that the project is likely to be completed by March, 2021. However, it was observed during field visit that delay in completion could be expected due to time taken in construction of structures in the area still awaiting forest and wildlife clearance.

After having on the spot assessment of the project, for completing the project by March, 2021 as claimed by the project authorities, the following challenges need to be addressed on priority.

- i. Acquisition of about 67.60 ha of balance land and remaining patches of land in Gaps is to be expedited.
- ii. Acquisition of forest land (about 10.45 ha) in few stretches is to be given top priority.
- iii. Construction work at Railway Crossings is to be expedited.
- iv. Expediting the pace of work of balance works.
- v. Expediting the work of 62.107 km long Campierganj Branch Canal and its distribution system (Scheme of Campierganj System is shown as **Figure-3** in **Part-III** of this report).
- vi. Expediting the CAD&WM works of the project.
- vii. Formation of WUAs in the command
- viii. Initiating the work of micro-irrigation in the identified command of the project.

\* \* \* \* \*

# **PART- II**

# **MONITORING REPORT**



## **PART - II**

### **MONITORING REPORT**

#### **CHAPTER-1**

##### **PROJECT DETAILS**

#### **1.1 PROJECT COMPONENTS AS BEING EXECUTED**

The Saryu Nahar Pariyojana, originally conceived as **Left Bank Ghaghara Canal project** in the year 1974 was reformulated in 1980 by changing and enlarging its scope and was renamed as Saryu Nahar Pariyojna covering nine districts of Uttar Pradesh viz. Bahraich, Shravasti, Gonda, Balrampur, Basti, SantKabir Nagar, Siddhartha Nagar, Maharajganj and Gorakhpur.

The project interlinks 5 rivers i.e. Ghagra, Saryu, Rapti, Banganga and Rohini in the Ghaghra basin. In this project 360 cumecs of water is transferred from Girija barrage on river Ghaghra to Saryu barrage on river Saryu through Saryu Link Channel (SLC) which offtakes from left bank of Girija barrage. Saryu Main Canal (SMC), with a designed carrying capacity of 360cumecs at its head, offtakes from the left bank of Saryu barrage. Several branches and distributaries offtakes from SMC for providing irrigation in the SMC command. Rapti Link Channel (RLC), offtakes at 34.7 Km of SMC that transfers 95cumecs of water from the SMC to the Rapti barrage on river Rapti. Rapti Main Canal (RMC) with designed capacity of 95cumecs at its head and 126.45 km in length offtakes from left bank of Rapti barrage. Several distributaries off-take from RMC to provide irrigation in the RMC command. The RMC finally joins the right bank of Banganga River at about 3.0km upstream of Banganga Barrage. Campierganj Branch with designed capacity of 55.64 cumecs at its head and 62.107 km length, offtakes from left bank of Banganga River and finally outfall in Rohin River.

Gross Command Area (GCA) under entire Saryu Nahar Pariyojna is 16.0 Lakhs Ha while the Culturable Command Area (CCA) is 11.29 Lakh Ha. The Ultimate Irrigation Potential of the whole project is 14.04 Lakh ha with Irrigation intensity of 124%.

Implementation of this project has been done in three phases. Two phases have been completed and the 3<sup>rd</sup> Phase is being implemented at present. In third phase, balance works of Saryu System and new works in Rapti System with total IP of 4.73 lakh ha are covered which are being funded under National Project Scheme of PMKSY.

The main components for this phase of the project are:

- **Saryu Link Channel**-47.135 km long, 360 Cumecs discharge, connecting Ghaghra Barrage to Saryu Barrage.
- **Saryu Main Canal**- 63.125 km long and 360 Cumec capacities. It provides irrigation facility in Ghaghara–Rapti Doab Area.
- **Rapti Link Channel**- Connecting Saryu Barrage to Rapti Barrage, 21.400 km long and 95 Cumecs capacity.
- **Rapti Main Canal** - 125.682 km long and 95 Cumecs capacity to irrigate trans-Rapti region between Rapti and Rohini rivers.
- **Campierganj Branch** -62.106 km long to Irrigate Area between Banganga & Rohini River.

## 1.2 INCLUSION OF PROJECT UNDER NATIONAL PROJECT SCHEME

The project was included for funding under AIBP scheme in year 1996-97 with estimated cost of Rs. 2756.16 Cr (PL 1998 in 72nd TAC). The cost was further revised to Rs. 7270.32 Cr (PL 2008 in 2010 – 103rd TAC). It remained under AIBP till the year 2011-12 and the project was declared complete in the Year 2012 with IP creation of 9.31 Lakh ha.

For balanced work of the project, the Cabinet Committee on Infrastructure gave its approval for inclusion of the Saryu Nahar Pariyojna under National Project on 03.08.2012 for works amounting Rs. 3238.33 crore with target date of completion as March 2016.

Subsequently, a Memorandum of Understanding (MoU) was signed between the Ministry of Water Resources, Government of India and Government of the Uttar Pradesh in Dec, 2012 for

inclusion of the project under National Projects of Government of India. As per the MoU-2012, the balance cost of the project was finalized as Rs. 3011.5384 crores with creation of Irrigation Potential of 4.73 Lakh ha (14.04 Lakh ha – 9.31 Lakh ha.). Out of 4.73 Lakh ha of IP, 3.27 Lakh ha is to be created in the command of Rapti Main Canal and remaining 1.46 Lakh ha in the command of Saryu Canal System.

Latest revision of the project was done in January, 2017. The details of the revised project components as being executed at present under National Project via-a-vis as per MOU signed in 12/2012 are given as under:

<b>Table-2: Details as per MoU-12/2012 &amp; as per Revised Project</b>			
<b>Sl. No.</b>	<b>Item of Work</b>	<b>Quantity as per</b>	
		<b>MoU-2012</b>	<b>Revised project</b>
1.	B-Land (Ha)	9443.48	2830.90
2.	<b>Headworks</b>	02 Nos.	16.5 km
3.	<b>Main Canal &amp; Branches</b>		
	Earthwork (Km)	125.85	188.55
	Pucca Works (Nos.)	187	311
	Lining (Km)	2.39	2.39
4.	<b>Dys and Minors</b>		
	Earthwork (Km)	3544.86	1103.71
	Pucca Works (Nos.)	3773	2099
	Lining (Km)	12.36	10.36
5.	<b>Escape Channel</b>		
	Earthwork (Km)	22.45	22.02
	Pucca Works (Nos.)	24	13
6.	<b>Drains</b>		
	Earthwork (Km)	5492.74	199.00
	Pucca Works (Nos.)	4506	119
7.	V-Water Courses (Th Ha.)	1025	-
	(i) Outlets (Nos.)	-	17639
	(ii) Wells (Nos.)	-	942
8.	Miscellaneous*	-	-
9.	Irrigation Potential (Th Ha)	473	473
*Miscellaneous includes Sharda Garden, A-Preliminary, K-Buildings, M-Plantation, O-Miscellaneous, P-Maintenance, Q-Equipments, R-Communications.			

### 1.3 Different Phases of Project Implementation

As per the document prepared for supporting the EFC proposal (**Annexure-2**) for inclusion of Saryu Nahar Pariyojana under

National Project, the project is being implemented in three phases i.e. Phase-I, Phase-II and Phase-III.

**Phase-I:** Phase-I of the work was completed in 1997 for a cost of Rs 298.38 Crores. The various works undertaken under Phase-I are as follows:

- Headworks
  - Head Regulator of Saryu Link Channel
  - Saryu Barrage
  - Rapti Barrage
  - Head of Utraula Pump Canal
  - Head of Dumariyaganj Pump canal
- Main Canal and Branches
  - Saryu Link Canal / Channel
  - Saryu Main Canal
  - Imamganj Branch
- Distribution System
  - Saryu Main Canal systems
  - Imamganj Branch systems
- Pucca Works of Main canal
  - Cross Drainage Works / Syphon for Saryu Link Canal
  - Cross Drainage Works / Syphon for Saryu Main Canal
- Pucca Works of Distributaries
  - Pucca Works of Saryu Canal Systems
  - Pucca Works of Imamganj Branch System

#### **Phase-II:**

Phase-II of the project was included under AIBP in the year 1996-97. The estimated cost of AIBP components was Rs. 5855.55 crores (at 2008 PL). The details of the works under Phase-II from 1997 to 2013 are as follows. The cost incurred up to its completion was Rs. 2932.73 crores

- Headworks
  - Pump House Ayodhya Pump Canal
  - Pump House Gola Pump Canal

- Main Canal and Branches
  - Basti Branch
  - Gonda Branch
  - Bansi Branch
  - Tarabganj Branch
  - Itiyathoke Branch
  - Mankapur Branch\*
  - Khalilabad Branch
- Distribution & Minor System
  - Basti Branch Dy& Minor System
  - Gonda Branch Dy& Minor System\*
  - Bansi Branch Dy& Minor System\*
  - Tarabganj Branch Dy& Minor System
  - Itiyathoke Branch Dy& Minor System\*
  - Mankapur Branch Dy& Minor System\*
  - Khalilabad Branch Dy& Minor System\*
- Pucca Works of Above Branch, Dy and Minors

### **Phase-III:**

The main components of works under Phase – III are:

- (a) Rapti Link Channel (RLC) and Rapti Main Canal (RMC);
- (b) Ten Branch Canals and distribution system

As per the EFC document (**Annexure-2**), balance works of Phase-II (marked as \*) will continue in Phase – III also.

## **CHAPTER-2**

### **PROJECT IMPLEMENTATION STATUS**

#### **2.1 CHANGE IN SCOPE:**

There has been a reduction in CCA to the tune of 71,000 ha. At inception of the project, 4.73 Lakh ha of IP was proposed to be created under National Project (NP) for 4.047 Lakh ha CCA. However, in the revised project, total CCA covered under NP has been reduced to 3.337 Lakh ha from 4.047 lakh ha, though the proposed IP has been kept unchanged as 4.73 Lakh ha.

In view of the above change in scope, CWC, Lucknow vide letter dated 18.01.2017 requested the State Government to prepare a revised DPR of the project in accordance to the extant Guidelines of MoWR, RD & GR and submit it to CWC for examination and further necessary action.

A meeting was held in Prime Minister's office on 23.12.2018 which was chaired by Principal Secretary to PM and it was decided that the approvals to the revised DPRs/cost estimates of Saryu Nahar Pariyojna shall be given by January 15th, 2018 and the concerned State Govt. officials have to work in close coordination with CWC in this regard.

UP I&WRD vide its letter dated 04.01.2018 submitted the revised DPR of the project to CWC (Headquarters), New Delhi on 8<sup>th</sup> January, 2018. A presentation on revised DPR of Saryu Nahar Project was made on 12.01.2018 in CWC (HQ) to discuss the issues pertaining to revised DPR with concerned specialized directorates of CWC. During the presentation it was decided that fast track proforma clearance may be accorded to the project. Subsequently, Fast Track Proforma was submitted by the Project Authorities to CWC Lucknow on 16.01.2018 which was examined and forwarded to CWC (HQ) on 17.01.2018.

Approval of Fast track proforma clearance to the project has been accorded by CWC (HQ) vide their letter dated 19.01.2018 under certain conditions which include satisfactory compliance of CWC observations on Hydrology, Irrigation Planning, etc. (copy enclosed as **Annexure-3**).



## 2.2 COST REVISIONS

The cost of the project has been revised from time to time. The year-wise cost revisions of the project are as under:

Table-3: Cost Revisions of the Project				
Sl. No.	Year of cost Revision	Revised Cost (in Rs. Crore)	Price Level	Remarks
1.	1978	76.68	1974	The original project i.e. Left Bank Ghaghara Canal project was sanctioned by the Planning Commission in April 1978
2.	1980	-	-	The project was reformulated in 1980 by changing and enlarging its scope and was renamed as Saryu Nahar Pariyojana.
3.	1982	299.20	1978	-
4.	1985	696.00	1985	-
5.	1992	1256	1992	-
6.	2000	2756.16	1998	The reformulated project i.e. Saryu Nahar Pariyojana was accepted by Central Water Commission in 72nd TAC Meeting held on 20.1.2000.
7.	2010	7270.32	2008	Project was found acceptable by Central Water Commission in 103 <sup>rd</sup> meeting of TAC held on 11.3.2010. The Investment Clearance to the project was issued by the Planning Commission in April 2010 for Rs. 7270.32 crores.
8.	2018	9802.67	2016	This cost of the whole project is based on latest EFC of the project by the State Government. The cost of National Project (NP) component is 5803.61 Crores. Fast Track Proforma Clearance accorded by CWC on 17.01.2018.

## 2.3 ORGANIZATIONAL SET UP FOR THE PROJECT

The organizational arrangements put in place for project implementation by the State of UP for this project are shown in **Annexure-4**. At the top project is managed by the Chief Engineer-I (East) at Gorakhpur who is assisted by two Level-II Chief Engineers viz; Chief Engineer-II (Saryu-I), Ayodhya and Chief Engineer-II (Saryu-II), Gonda.

The Chief Engineer-II (Saryu-I), Ayodhya is being assisted by 5 Superintending Engineers; who are stationed as: two at Ayodhya, two at Bahraich and one at Gonda. Chief Engineer-II (Saryu-II), Gonda is being assisted by 4 Superintending Engineers; who are stationed as: two at Balrampur, one each at Basti and Gonda. The above two Chief Engineers and 9 Superintending Engineers are being assisted by 41 Executive Engineers.

## 2.4 CONTRACTUAL ARRANGEMENT

The UP I&WRD has its own bylaws for delegation of powers to officers as per their hierarchy. The existing rules and regulations framed by Irrigation Department for contractual works, arbitration procedure, settlement of claims etc. are applicable in this project. The contracts for execution of works are governed by applicable GFRs, Irrigation Manual of Orders, I.D. Forms 111 & 112 and detailed I.D. Specifications. For any special conditions of contracts, prior approval of the Government is necessary.

The Chief Engineer, Superintending Engineer, Executive Engineer and Assistant Engineer exercise their financial powers for accepting tenders. They have been delegated with the following financial powers in this regard as indicated in **Table 4**.

Table 4: Financial Powers for accepting Tenders		
Sl. No.	Designation	Financial Powers
1.	Assistant Engineer	Up to Rs 2.00 lakh
2.	Executive Engineer	Up to Rs. 40.00 lakh
3.	Superintending Engineer	Full powers, (for tenders costing above Rs. 1.0 crore, Chief Engineer's approval is required)
4.	Chief Engineer	Full powers

## 2.5 QUALITY ASSESSMENT

A quality control organisation has been established under this project. Two Quality Control Divisions; one at Gonda and other at Basti are functioning under the Superintending Engineer, Quality Control Circle, Ayodhya and under overall control of Chief Engineer, Saryu-I, Ayodhya. Field laboratories have been established at Gonda, Bahraich, Balrampur and Basti under control of Assistant Engineers.

## **2.6 LAND ACQUISITION, RESETTLEMENT & REHABILITATION**

### **2.6.1 LAND ACQUISITION:**

Land requirement after optimization has reduced to 2830.90 ha from the earlier 9443.48 ha. Out of 2830.90 ha, the progress of land acquisition by July, 2020 was reported as 2763.30 ha. Thus, about 67.60 ha of land is reported as balance for acquisition in addition to some patches of land in the Gaps. The land acquired in the year 2020-21 up to July, 2020 is reported as 7.50ha under NP component. Due priority needs to be given to acquire balance land to complete the project in time.

### **2.6.2 REHABILITATION& RESETTLEMENT**

No R&R issue is involved in the project.

## **2.7 ENVIRONMENT AND FOREST CLEARANCE**

Environmental Clearance has already been obtained in the year 2000. As per the information furnished by UP I&WRD (Page no. 242 of the revised DPR, 2017 Vol. I), there is no bottleneck on account of Forest Land clearance. However, during the implementation of the project, the issue of acquirement of about 10.45 ha of forest land at various chainages of Rapti Main Canal (RMC) cropped up which is yet to be acquired. Due priority needs to be given to acquire the forest land to complete the project in time.

## **2.8 PROPOSAL UNDER NATIONAL PROJECT AND OPTIMIZATION**

As per the MoU-2012 of SNP, balance cost of the project was Rs. 3011.53 Crores to create balance Irrigation Potential of 4.73 Lakh ha. During the project implementation phase, the cost of land had increased tremendously. This had made significant impact on escalation of Project costs.

During project review at CWC, it was viewed that if the project will be allowed to continue in its current form it will become economically unviable. Keeping this in mind, DoWR, RD & GR, MoJS in its meeting held on 27<sup>th</sup> November, 2015 suggested UP State Govt. to realistically assess the land requirement and optimize project components based on current trends and technical advancements.

The State Government subsequently carried out an optimization exercise to reduce land requirement for Distributaries & Minors. This exercise had subsequently reduced land requirement as is evident from **Table 5**. Physical quantities of NP components and their estimated cost as per the MoU signed in December, 2012 and as per the revised project are presented below:

<b>Table-5:</b>					
<b>Physical and Financial Details as per MOU-2012 &amp; Revised Project</b>					
<b>Sl. No.</b>	<b>Item of Work</b>	<b>Quantity as per</b>		<b>Cost (in Rs. crore) as per</b>	
		<b>MoU-2012</b>	<b>Revised project</b>	<b>MoU-2012</b>	<b>Revised project</b>
1.	B-Land (Ha)	9443.48	2830.90	684.2862	1834.9325
2.	<b>Headworks*</b>	02 Nos.	16.5 km	43.2493	112.9331
3.	<b>Main Canal &amp; Branches</b>				
	Earthwork (Km)	125.85	188.55	327.797	388.8683
	Pucca Works (Nos.)	187	311	282.6262	2278.8444
	Lining (Km)	2.39	2.39	3.8355	9.5629
4.	<b>Dys and Minors</b>				
	Earthwork (Km)	3544.86	1103.71	329.9475	235.6807
	Pucca Works (Nos.)	3773	2099	484.6304	475.9640
	Lining (Km)	12.36	10.36	7.1963	34.6641
5.	<b>Escape Channel</b>				
	Earthwork (Km)	22.45	22.02	28.5691	14.2139
	Pucca Works (Nos.)	24	13	25.8840	48.8777
6.	<b>Drains</b>				
	Earthwork (Km)	5492.74	199.00	133.6691	106.2225
	Pucca Works (Nos.)	4506	199	117.0754	47.9837
7.	V-Water Courses (Th Ha.)	1025	-	401.3742	117.5113
	(i) Outlets (Nos.)	-	17639		
	(ii) Wells (Nos.)	-	942		
8.	Miscellaneous**	-	-	141.3982	97.3539
9.	Irrigation Potential (Th Ha)	473	473	-	-
<b>Total</b>				3011.5384	5803.6130
* Headworks is complete. Works on Afflux bund having length of 16.5 km under Headworks was only proposed under Phase – III. **Miscellaneous includes Sharda Garden, A-Preliminary, K-Buildings, M-Plantation, O-Miscellaneous, P-Maintenance, Q-Equipments, R-Communications etc.					

## 2.9 LATEST ESTIMATED COST

The earlier approved cost of the whole project was Rs. 7270.32 crore of which cost of NP component was Rs. 3011.5384 crore. As per the Govt. of Uttar Pradesh Order dated 21.12.2017 (**Annexure-**

5), latest approved cost of the whole project has been increased to Rs. 9802.6750 crore which includes cost of NP components as Rs. 5803.61 Crores.

## 2.10 FAST TRACK PROFORMA CLEARANCE (FTPC) OF THE PROJECT

Project was found acceptable by Central Water Commission in 103<sup>rd</sup> meeting of TAC held on 11.3.2010. The Investment Clearance to the project was issued by the Planning Commission in April 2010 for Rs. 7270.32 crores. Conditional Fast Track Proforma Clearance to the project has been accorded by CWC vide their letter dated 19.01.2018 (**Annexure-4**) for total project cost of 9802.67 crores in which the cost of NP component is 5803.61 Crores.

## 2.11 EXTERNAL ASSISTANCE / CENTRAL ASSISTANCE

At present, the project is not receiving any External Assistance other than Central Assistance. However, for the part of State Share MoA with NABARD has been signed on 05.01.2018.

The project was included under National Project Scheme in December, 2012. Central Assistance (CA) released up to 30/04/2020 to the project is Rs. 2243.185 crore. Year-wise releases of CA are given as under:

Table-6: Year-wise releases of Central Assistance		
Year	Date of Release	Amount of CA Released (Rs. Crores)
2012-13	22.03.2013	67.9800
2013-14	08.11.2013	380.7500
2014-15	20.10.2014	210.8550
2015-16	26.02.2016	500.0000
2016-17	29.03.2017	62.0000
2017-18	-	Not demanded by State
2018-19	20.03.2019	305.000
2019-20	April 2020	716.60*
<b>Total</b>		<b>2243.185</b>

\* The second instalment of CA amounting to Rs. 358.30 crore though sanctioned in March 2020 for the year 2019-20. However, the release of second instalment delayed due to COVID-19. The amount of second instalment of CA due in 2019-20 was released in April, 2020(FY: 2020-21).

As per decisions taken by the Cabinet, only 20% cost escalation on approved cost as on March, 2012 is to be considered for CA calculation, therefore, cost of works after 20% cost escalation on Rs.3011.5384 crore (cost of works at the time of inclusion under NP in December, 2012) comes out to be Rs. 3613.8461 crore.

As per the template furnished by the DoWR, RD & GR, MoJS, total CA admissible for the project since 2012-13 was assessed as Rs. 2388.1693 crore. The CA released to the project up to 31/03/2016 was Rs.1159.585 crore. Thus total admissible CA as on 01.04.2016 worked out as Rs.**1228.5843 crore(Annexure-6)**.

Rs. 62.00 Crore was released during 2016-17. During Year 2017-18 the State Government did not demand Central Assistance. CA released during 2018-19 was Rs.305.00 Crore. CA released during 2019-20 was Rs.716.60 Crore. Thus total CA as on 30/04/2020 released to the project comes out as Rs. 2243.185 crore. Based on this, the balance admissible CA as on date is as per details given in **Table 7**.

Amount in Rs. Crore

Table-7: Balance Central Assistance				
Sl. No.	Total balance CA to be released as on 01.04.2020	Balance CA releases		Balance CA
		Year	CA	
1.	144.98	2020-21	-	144.98*
* The proposal for CA release is expected to be submitted in November / December, 2020.				



## CHAPTER-3

### PROJECT IMPLEMENTATION PROGRESS

#### 3.1 PHYSICAL AND FINANCIAL PROGRESS OF DIFFERENT COMPONENTS OF THE PROJECT

The physical and financial progress of the project up to the period ending July, 2020 is reported as under:

Amount in Rs. Crore

S. No.	Item of Works (unit)	Physical Progress				Financial Progress (Rs. In Crores)			
		Revised estimated Quantities (FTFC)	Physical Progress as on 03/2020	Physical Progress in year 2020-21	Total cumulative Progress as on 07/2020	Revised estimated Cost (FTFC)	Financial Progress as on 03/2020	Financial Progress in year 2020-21	Total cumulative Progress as on 07/2020
1	2	3	4	5	6	7	8	9	10
1.	B-Land (Ha)	2830.90	2755.75	7.50	2763.30	1848.22	2336.04	14.10	2350.14
2.	Head works (km.)	16.50	2.60	0	2.60	109.43	53.04	-	53.04
3.	Main Canal & Branches								
	(i) Earth Work (km.)	188.382	179.25	3.10*	179.25	388.87	362.64	2.22	364.86
	(ii) Pucca works (nos.)	311	204	105*	204	2278.83	1646.15	70.11	1716.26
	(iii) Lining (km.)	2.39	0	0	0	9.56	0	0	0
4.	Distributaries & Minors								
	(i) Earth Work (km.)	1103.71	855.91	45.11 (c) + 135.05*	901.01	235.68	138.29	2.95	141.24
	(ii) Pucca works (nos.)	2099	1997	31*	1997	475.96	299.27	4.10	303.37
	(iii) Lining (km.)	10.36	2.00	0	2.00	34.66	3.61	0	3.61
5.	Escape Channel								
	(i) Earth Work (km.)	22.02	0.78		0.78	14.22	0.728	-	0.728
	(ii) Pucca works (nos.)	13	13	-	13	48.87	5.46	-	5.46
6.	Drains								
	(i) Earth Work (km.)	199.00	56.35		56.35	96.42	7.94	-	7.96
	(ii) Pucca works (nos.)	119	119	-	119	47.98	47.98	-	47.98
7.	Water courses								
	(i) Outlets (nos.)	17639	12775		12775	117.56	21.95	-	21.95
	(ii) Wells (nos.)	942	0	0	0				
8.	Miscellaneous	-	-	-	-	97.35	81.97	-	81.97
<b>Total</b>						<b>5803.61</b>	<b>5005.03</b>	<b>93.48</b>	<b>5098.51</b>

\* Work in progress.

## 3.2 PROJECT POTENTIAL

### 3.2.1 DISTRICT WISE IRRIGATION POTENTIAL

Table-10: District-Wise Irrigation Potential			
Sl. No.	Districts Benefitted	Ultimate Potential in the District (Lakh ha.)	Ultimate Potential of the Project (Lakh ha.)
1	Bahraich	0.13	4.73
2	Basti	0.31	
3	Gorakhpur	0.50	
4	Gonda	0.32	
5	Shravasti	0.33	
6	Balrampur	1.39	
7	Siddharth Nagar	1.34	
8	Sant Kabir Nagar	0.09	
9	Maharajganj	0.32	

### 3.2.2 YEAR-WISE POTENTIAL CREATION

Total Irrigation Potential (IP) proposed to be created under NP is 4,73,000 ha.

The Year wise Irrigation Potential created in the project up to 07/2020 under National Project is as under:

Table-9: Year Wise Irrigation Potential Creation	
Year	Irrigation Potential Created (Ha.)
2012-13	5,340
2013-14	48,620
2014-15	9,110
2015-16	63,780
2016-17	19,010
2017-18	2,600
2018-19	45,020
2019-20	1,19,520
2020-21	-
<b>Total</b>	<b>3,13,000*</b>

Out of reported 3,13,000 ha of IP created so far (up to 2019-20), only 1,35,000 ha is reported as the wet potential (which

can be utilised). The rest of the potential created is dry (un-utilised) due to non-completion of Rapti Main Canal (RMC) at various chainages as the forest clearance and construction of PRB's and Railway Bridges at these locations is yet to be completed.

### 3.3 FINANCIAL PROGRAMME AND PROGRESS

**3.3.1** The budget provision for an amount of Rs.1404.00 Crore has been made by the State Government for FY 2020-21. Rs. 100.00 crore has been released and Rs. 93.48 crore has been utilized by July, 2020.

#### 3.3.2 YEAR-WISE EXPENDITURE

The Year wise expenditure incurred in the project after inclusion of the project under National Project is as under:

Table-11: Year Wise Expenditure	
Year	Expenditure Incurred (Rs. Crores)
2012-13	8.3927
2013-14	499.7022*
2014-15	623.00*
2015-16	834.00
2016-17	201.2639
2017-18	571.23
2018-19	962.00
2019-20	1305.45
2020-21 (upto July, 2020)	93.48
<b>Total</b>	<b>5098.51</b>

### 3.4 FINANCIAL MANAGEMENT

Table-12: Financial Management		
(i)	Are the plan funds as provided in the annual plans being matched by budget grants?	No. (General trend)
(ii)	Are budget grants as approved being received in the project well in time?	No. (General trend)

(iii)	Does a system of issuing letter of credit exist? If so at what periodicity? Is the distribution of annual budget within the year adjusted to the work plan? Are LOCs being received timely?	No. (General trend)
(iv)	After considering the level of financing, the balance cost and the likely escalation of cost, what approximate period in your opinion will be required to complete the project?	The target completion date for balance works of the project is now March, 2021, but it appears that the completion of the project will spill over in year 2021-22 as the forest clearance of about 10.45 ha forest land and other small is yet to be obtained, besides acquiring small patches of land cross various canal path.

### 3.5 MONITORING OF PROJECT AT STATE /PROJECT LEVEL

At state level the project is being monitored under the overall supervision of E-in-C (DP). There are exclusively two Monitoring divisions to monitor the different components of the project works.

It has been advised to the State Authorities that weekly Progress Report for review of status through video conferencing by Chairman, CWC may be prepared and send to CWC, Lucknow on regular basis. Also, Quarterly Progress Reports may be prepared for the progress of different components of the project and send to CWC, Lucknow on regular basis.

## **CHAPTER-4**

### **OBSERVATIONS/ SUGGESTIONS BASED ON SITE VISIT**

#### **4.1 OBSERVATIONS/SUGGESTIONS**

##### **4.1.1 Sites visited during Monitoring visit**

CWC team visited the project on 16<sup>th</sup> September, 2020 during which the following sites were seen.

- a) Sites at various chainages (*km 71.490 to km 72.300, km 72.810 to km 72.830 & km 81.950 to km 88.510*) of Rapti Main canal (RMC) held up for want of Forest clearance.
- b) Railway crossing at 96.478km.
- c) PRB at 103.7km
- d) Campierganj Head regulator.

The photographs of visited sites are appended in **Part-IV: Photographs** section of this report.

##### **4.1.2 OBSERVATIONS BASED ON THE VISIT UNDERTAKEN ON 16.09.2020**

- A. Sites at various chainages (*km 71.490 to km 72.300, km 72.810 to km 72.830 & km 81.950 to km 88.510*) of Rapti Main canal (RMC) held up for want of Forest clearance**

##### **(i) Chainage 71.490 to 72.300 km of RMC:**

The site at chainage 71.490 to 72.300 km of Rapti Main Canal (RMC) was visited. The construction work in this reach is held up for want of Forest clearance as about 3.571 ha identified as Forest land. The project authorities have taken up the various steps / follow-up actions with the Forest Department to get the Forest clearance. As a result, the stage I clearance for the area had been granted on 02.06.2020. Alternate land in lieu of the forest land has been identified and consent of the farmers has been taken. The construction work shall start as soon as the payment of the land is made and is transferred to the forest department.

**(ii) Chainage 72.810 to 72.830 km of RMC:**

The construction work of PRB at chainage km 72.810 to km 72.830 of Rapti Main Canal (RMC) in this reach was held up as about 0.2112 ha land identified as forest land. The Stage-I clearance for this area had also been obtained on 29.05.2020. However, the wildlife clearance, another requirement to start the work is still awaited.

Project authorities were advised to pursue the matter with Forest Department vigorously to get the wildlife clearance for above mentioned reaches (km 71.490 to km 72.300, km 72.810 to km 72.830) so that the construction work can be started and time line for completion of the project can be adhered to.

**(iii) Chainage 81.950 to 88.510 km**

It has been reported that three stretches of Rapti Main Canal (RMC) from 81.950 to 82.250 km, 86.692 to 87.305km and 88.430 to 88.510km (6.8826 km length) falls in zone of the forest area. In these stretches, three drainage syphons at 82.00km, 87.20km and 88.500km are to be constructed but the work is held up for the want of forest clearance. It was informed that the construction work at drainage syphon at km 87.200 was started and 23 barrels out of 49 barrels in this syphon were completed. But, thereafter the issue of forest clearance was raised by the Forest department and work was stopped by the Forest department. On the day of visit, the 23 barrels reported complete were found submerged due to impounded rainwater.

It was reported by the project authorities that the forest land under above mentioned three reaches is about 6.8826 ha. The proposal for clearance was sent for approval of Regional Empowered Committee (R.E.C.) of the Government of India to Regional office, Lucknow for which the meeting was expected to be held on 25.09.2020.

Project authorities were advised to pursue the matter with Forest Department vigorously for forest clearances so that time line for completion of the project can be adhered to. It was also advised that the details of actions taken by the project authorities in respect of forest clearance may be provided to UGBO office so that the same could be



forwarded to SPR wing of DoWR, RD & GR to take up the issue with State Forest Department as well as MoEF &CC, Gol to expedite the forest clearance.

The steps taken by the project authorities and latest status related to forest clearance of all above mentioned reaches, as informed by them are summarised as under:

SI No	Name of canal/Chainage	Effectuated area	Remarks/Current Status
1	R.M.C. Km. 71.490 to 72.300	3.571 Ha.	Stage -1 clearance has been issued on 02.06.2020. Land transfer process is in progress.
2	R.M.C. Km. 72.810 to 72.830	0.2112 Ha.	Stage -1 clearance has been issued on date 29.05.2020. Proposal for State Wildlife clearance has been sent.
3	R.M.C. Km. 81.950 to 82.250, Km 86.692 to 86.812, Km 87.100 to 87.305 & Km 88.430 to 88.510	6.8826 Ha.	For stage -1 clearance proposal has been submitted to regional office forest dept. Govt. Of India, Aliganj, Lucknow on 30.06.2020. The meeting of REC is expected on 25.09.2020.

#### **B. Railway crossing at 96.478km of Rapti main canal.**

There are three railway crossings, two on Rapti Main Canal (at km. 96.478 & km. 114.140) and one on Campierganj branch canal (at km. 51.293) which are to be completed. Of these, the site at railway crossing at km 96.478 km of Rapti Main canal was visited. It was informed that all the issues related to clearance were now resolved and work has been started for diversion of the railway line. The earthwork for diversion was being carried out, but the progress was slow due to onset of monsoon. The construction materials like sleepers etc. present at the site were seen.

Regarding status of work at other two railway crossing sites, the project authorities informed that the issues related to clearance at km. 114.140 of RMC is resolved now and work

has been started. The payment for construction of bridge has been made to Railway Department to carry out the works at km. 51.293 for Campierganj branch canal.

The latest status related to works of railway crossings at all above mentioned reaches, as informed by them are summarised as under:

Sl. No.	Name of Canal/ Chainage	District	Remark/Current Status
1	Rapti Main Canal Km. 96.478	Balrampur	Earthwork for diversion of railway track has been started, Although the works are hindered due to monsoon.
2	Rapti Main Canal Km. 114.140	Siddharth Nagar	Earthwork for diversion of railway track has been started, Although the works are hindered due to monsoon.
3	Campierganj Branch Km. 51.293	Mahrajganj	Payment for construction of bridge has been made to Railway Department to carry out the works

Project authorities were advised to pursue with concerned officials of railway department on regular basis so that the construction works get expedited and time line for completion of the project can be adhered to.

**c. PRB at km 103.700 of Rapti Main Canal (RMC).**

The RMC at km 103.700 was also visited. At this site, the mobilisation of men and machinery were found to have been started but physical works was yet to be started. It was emphasised to start the construction work immediately without loss of time.

#### **D. Campierganj Head regulator.**

The work at head Regulator was in full swing and was expected to be completed within two month time.

After the field visit, the overall progress of work was observed to be satisfactory. However, the bottlenecks, mainly forest clearance needs to be pursued vigorously with the concerned authorities of the forest department by the authorities at the highest level for timely completion of the project and avoid cost over-run and damage to the already constructed canals and other structures.

### **4.1.3 OTHER OBSERVATIONS IMPORTANT TO THE PROJECT**

#### **A. LAND ACQUISITION**

Though progress has been achieved in land acquisition front but about 67.60 ha of land is yet to be acquired in addition to patches of land in the Gaps (about 99% of land acquisition has been reported to be complete in Gaps). However, due priority needs to be given to acquire balance land to complete the project in time and to utilise the potential created to its fullest.

#### **B. ACQUISITION OF FOREST LAND**

The Forest Land of about 10.45 ha at various chainages is yet to be transferred to Irrigation Department. The construction works of various structures in these areas are held up. Project authorities though informed that the formalities for forest clearance from the Forest department have been completed and forest land transfer to project likely to be materialized soon, yet it seems that process / formalities needs to be expedited in close coordination with State Forest Department.

#### **C. PHYSICAL PROGRESS AT RAILWAY CROSSINGS**

The progress of work on railway crossings is slow. Regular persuasion with railway department is needed to expedite the work so that project can be completed by the target date of its completion.

#### D. PHYSICAL PROGRESS AT NATIONAL HIGHWAY CROSSING

There are three National Highway crossings, two at Rapti Main Canal (at km. 96.813 & km. 109.640) and one on Campierganj branch canal (at km. 45.738). Of all these, it was informed that the NOC from NHAI have already been issued and works at these locations have been started. Pace of work needs to be expedited for timely completion of the project.

The status of works at National Highway Crossing, as informed by the project authorities are as under:

SL No	Name of Canal/ Chainage	District	Remark/Current status
1	Rapti main canal/ Km. 96.813	Balrampur	N.O.C. issued by NH office dated 28-02-2020. Work for diversion of road has been started.
2	Rapti main canal/ Km. 109.640	Siddharth nagar	N.O.C. issued by NH office dated 28-02-2020. Work for diversion of road has been started.
3	Campierganj Branch/Km. 24.330	Maharajganj	Diversion work has been started. EE, Basti has sent request for No Objection on date 05.06.2020
4	Campierganj Branch/Km. 45.738	Maharajganj	N.O.C. issued by NH office dated 06-01-2020. Work for diversion of road has been started.

#### E. CADWM WORKS

CAD&WM works proposed for Saryu Nahar Pariyojana Phase-III with CCA of 4.8 Lakh ha and estimated cost of 1672.69 Crore was included by the Ministry of Water Resources, RD & GR's CADWM programme in the year 2017-18 vide letter No. 19011/7/2018/CADWM dated 21.03.2018 with completion time of three years (i.e. 2017-18 to 2019-20). As per the Programme submitted by CADA, CAD&WM works for 1.44 Lakh Ha CCA was to be taken up during 2019-20, but they could not initiate any work of CAD&WM due to inter-departmental issue.

As per the latest status received from the CADA officials, a budget provision of Rs. 500 Crores has been made by the State for FY 2020-21. The work of Survey and Investigation for 1.44 lakh ha has been completed and the details were uploaded in the web portal of MIS. However, no physical works have been undertaken yet.

#### **F. GAPS IN AIBP PORTION OF THE PROJECT**

The balance land requirement in gaps of the existing system (Phase-I) was reported earlier as 39.745 ha out of which the case of land acquisition for 38.529 ha has been submitted to the respective District Magistrates to acquire under Land Acquisition Act. Remaining 1.216 Ha is in the process of acquisition by the irrigation department. There are 43 distributary and minors till date affected by these gaps. Therefore, the land acquisition in gaps needs to be expedited. The Project authorities during visit have informed that land acquisition in gaps is nearly completion stage (about 99% of land acquisition has been reported to be complete in Gaps).

#### **G. DATA FEEDING ON MIS**

The data feeding on MIS is not being updated regularly. Project Authorities need to ensure feeding of up to date data in MIS system on regular basis including employment generation. This was brought to the notice of project authorities during the visit and were instructed for compliance.

#### **H. COMPLIANCE REPORT TO CWC OBSERVATIONS IN EARLIER REPORT**

Compliance of CWC observations on Hydrology, Irrigation Planning, etc. as mentioned in FTFC dated 17.01.2018 needs to be expedited.

#### **I. FORMATION OF WATER USER ASSOCIATIONS**

Process of formation of Water User Associations (WUAs) and their registration need to be expedited so that the WUAs become functional and the command which has already been created

under Saryu system of the project may be handed over to the respective WUAs for operation and maintenance.

#### **J. WORKS OF MICRO-IRRIGATION IN IDENTIFIED COMMAND**

The works of micro-irrigation in the identified command of the project need to be initiated.

#### **K. FURNISHING OF REQUISITE INFORMATION**

Project Authorities were asked to provide requisite information immediately, sought earlier and instructed during the visit. These are as under:

- Concurrent evaluation report of the Project by the third party and Audited Statement of the project for the balance amount for the process of the case for release of 1<sup>st</sup> instalment of Central Assistance (CA) during FY: 2020-21.
- Submission of requisite information on following (as mentioned during previous monitoring visit)
- Digitized map of the project on A-0 or A-1 size sheet as well as in soft copy showing all the main canals, branch canals, distributaries and minors with their command area in different colours for AIBP part and NP part.
- Canal-wise details (for NP Portion) of land acquired and balance land as on 31.01.2019 in per the format which is available with the Project Authority.
- Canal-wise details of Gaps in AIBP and NP portion of the project in the format which is available with the Project Authority. It is to mention that these details are to be prepared exclusively for AIBP portion and Gaps of NP portion must not be mixed with the AIBP Gaps.

\*\*\*\*\*

# **PART- III**

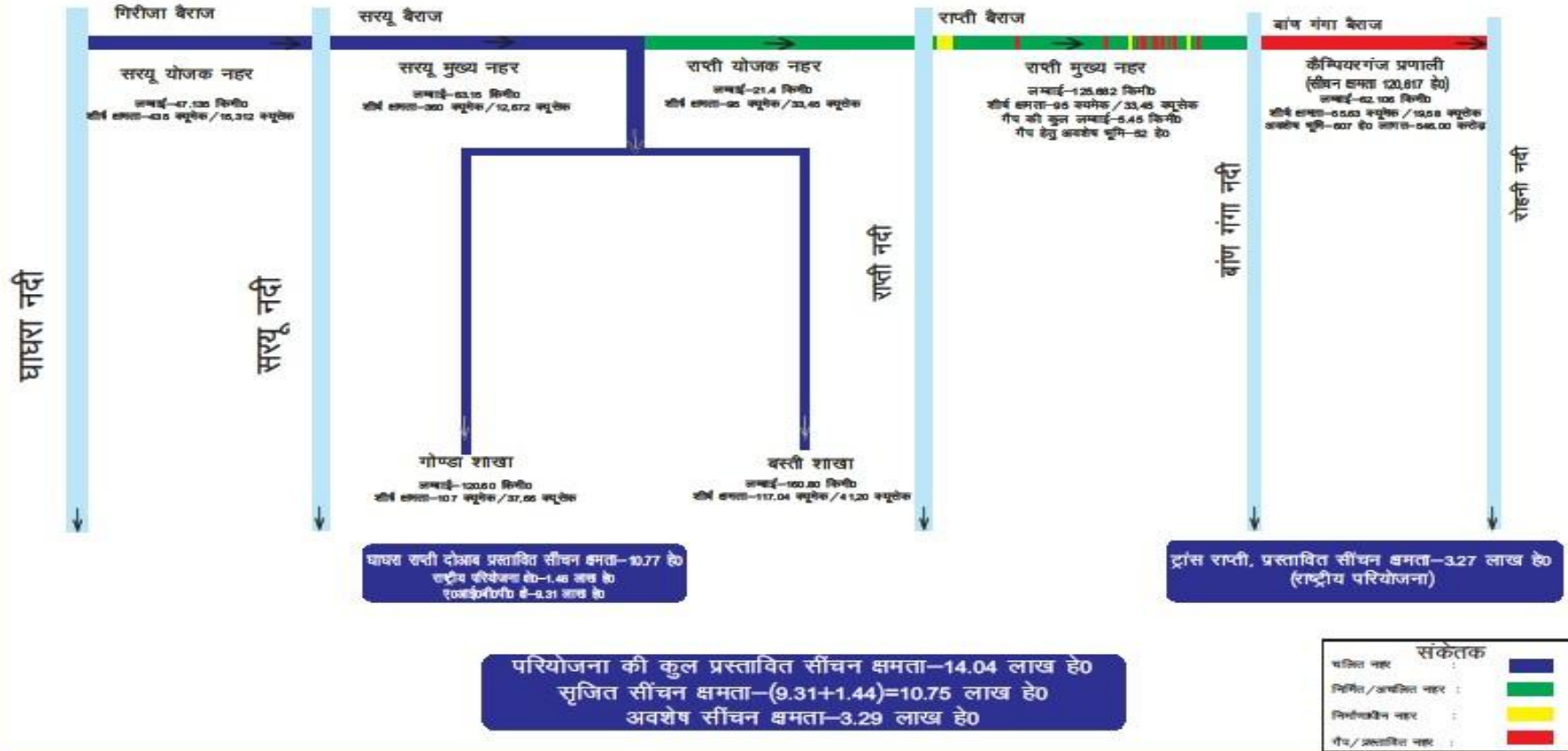
# **SCHEMATIC DIAGRAMS**

# **&**

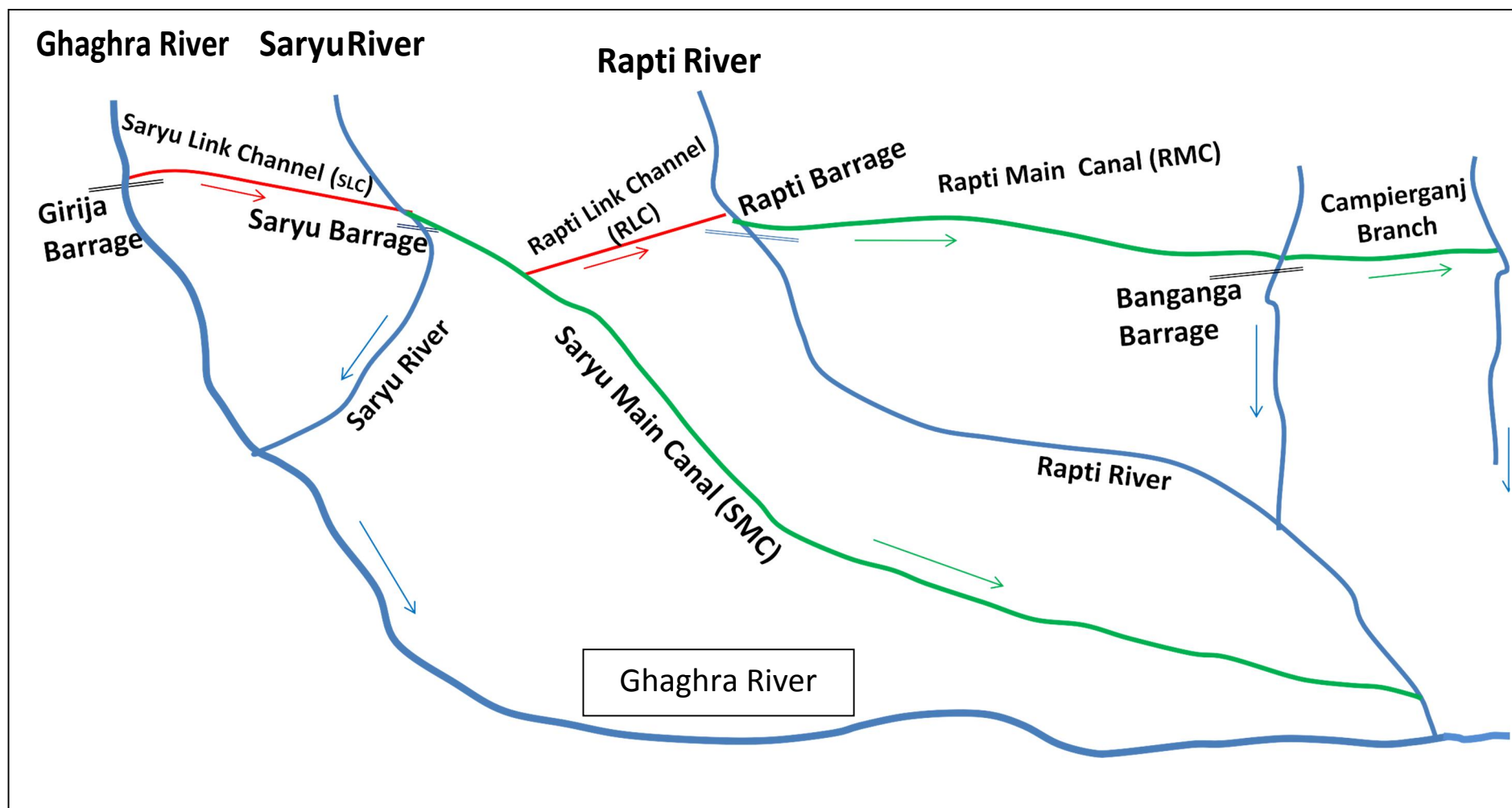
# **INDEX MAP**

# सरयू नहर परियोजना

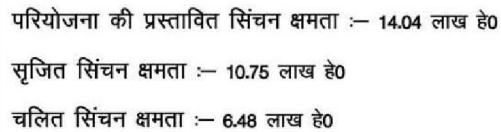
(घाघरा, सरयू, राप्ती, बाण गंगा एवं रोहनी नदियों की योजक परियोजना)







## INDEX MAP





# **PART- IV**

# **PHOTOGRAPHS**



**SARYU NAHAR PARIYOJANA VISIT (16.09.2020)**



**Issue of Clearance from Forest Department at chainage 71.490 to 72.300 km**



**Issue of Clearance from Forest Department at chainage 71.490 to 72.300 km**





**Issue of Clearance from Forest Department at chainage 71.490 to 72.300 km**



**PRB at 72.8 Km of RMC**





**PRB at 72.8 Km of RMC**



**PRB at 72.8 Km of RMC**



**Syphon works under construction**



**Syphon work under construction**





**Construction work at site between 81.95 to 88.510km**



**Drainage syphon at 87.2km**





**Raiway Crossing at 96.478 km (earthwork for Diversion works started)**



**Railway Crossing at 96.478 km (Material reached at site for diversion works)**



**Head regulator Campierganj Canal**



# **PART- V**

# **ANNEXURES**

**SALIENT FEATURES OF PROJECT (AS PER REVISED DPR)**

- 1.0 Name of Scheme **Saryu Nahar Pariyojana**
- 2.0 Gross Commanded Area (G.C.A.) 16.00 Lac ha.
- 3.0 Culturable commanded Area (C.C.A.) 11.29 Lac ha.
- 4.0 Proposed Irrigation 14.04 lac ha.
- 5.0 Intensity of Irrigation 124.35%
- 6.0 Name of Districts benefitted Bahraich, Balrampur, Shravasti, Gonda, Basti, Siddharthnagar, Sant Kabir Nagar, Gorakhpur & Maharajganj (Total nine districts)
- 7.0 District-wise areas benefitted

Area in Lakh ha.

Sl. No.	Districts	C.C.A.	Proposed Area
1	Bahraich	1.39	1.72
2	Shravasti	0.46	0.60
3	Balrampur	2.73	3.51
4	Gonda	1.48	1.79
5	Siddharthnagar	1.85	2.16
6	Basti	1.38	1.72
7	Sant Kabir Nagar	0.80	1.01
8	Gorakhpur	0.88	1.08
9	Maharajganj	0.32	0.45
<b>Total</b>		<b>11.29</b>	<b>14.04</b>

- 8.0 System-wise C.C.A.

Sl. No.	Name of the System	C.C.A. (lakh ha)
1.	Saryu System	8.89
2.	Rapti System	2.40
<b>Total</b>		<b>11.29</b>

**Annexure-1 (Sheet 2 of 2)**

9.0	Barrages	2 Nos.
10.0	Pump Canals	4 Nos.
11.0	Tubewells	4617 nos.
12.0	Source of Supply	(Diversion scheme) River Ghaghra, River Saryu, River Rapti
13.0	Total Cost of the Project	Rs. 9802.68 Crores
14.0	Cost per ha of Annual Cost	Rs. 69819.65 per ha.
15.0	Gross Revenue	Rs. 13696.92 Lakh
16.0	Net Annual Benefits	Rs. 290333.05 Lakh
17.0	Annual Costs	Rs. 164446.31 Lakh
18.0	Benefit - cost Ratio	<b>1.77</b>

\*\*\*\*\*

- EFC - on Sangu Nahar Ranyogne  
V.P

The following team of officers helped jointly in preparing the document for supply EFC proposal at the above EFC meeting - in the form of preparation of various tables submitted to Sec (W), Sec (Exp).

C-E (RPO) By  
20/12

Dio Man (N)  
20/12

20/12

20.12.11  
CE Sangu II  
Gonda

26.12.11  
CE Sangu-1  
Faizabad

20/12/11  
R. C. V. Singh  
SE IXIWBEL

# Saryu Nahar Pariyojna

## Status of Physical/Financial Phase (1+2+3)

Annexure-2  
(page 2 of 11)

Status of Physical/Financial Phase (1+2+3)																											(page 2 of 11)
Sl. no	ITEM OF WORK	UNIT	Provision as per revised Project 03/10		PROGRESS UPTO 3/2011		BALANCE ON 1/4/2011		Phase-I (Annexure-III)						Phase-II (Annexure-IV)						Phase-III (Annexure-V)						
			QTY.	COST	QTY.	COST	QTY	COST	Provision		PROGRESS UPTO 03/11		BALANCE AS ON 04/11		Provision		PROGRESS UPTO 03/11		BALANCE AS ON 04/11		Provision		PROGRESS UPTO 03/11		BALANCE AS ON 04/11		
									QTY	COST	QTY	COST	QTY	COST	QTY	COST	QTY	COST	QTY	COST	QTY	COST	QTY	COST	QTY	COST	QTY
1	2	3	4	5	6	7	8	9	10	11	12	13	14	15	16	17	18	19	20	21	22	23	24	25	26	27	
1	B-LAND	HECT.	31290.35	142048.72	21773.44	65254.89	9516.91	76793.83	990.00	980.05	990.00	980.05			23163.46	77429.75	19382.58	63612.90	3780.88	13816.85	7136.89	63638.92	1400.86	661.94	5736.03	62976.98	
2	(A) Head Works MAIN CANAL & BR. PUGCA WORKS	NOS.	7	15076.39	7	9825.53	0.00	5250.86	5	396.73	5	396.73			2	14679.66	2	9428.80	0	5250.86							
	(B) Tubewell	NOS.	3600	46774.30	100	574.30	3500.00	46200.00																			
3	MAIN CANAL & BR. PUGCA WORKS	NOS.	1566	66773.62	1366	37135.53	200.00	29638.09	369	703.36	369	703.36			100.00	574.30	100	574.30	0	0.00	3500.00	46200.00			3500.00	46200.00	
	Earth Work	K.m.	1150.00	54606.03	1023.14	21480.81	126.86	33125.22	442.00	14235.06	742.00	14235.06			1050	34622.63	981	34220.23	69	402.40	147	31447.63	16.00	2211.94	131.00	29235.69	
	Lining	K.m.	6.79	920.00	4.40	536.45	2.39	383.55							261.84	5215.51	259.98	4270.56	1.86	944.95	146.16	35155.46	21.16	2975.19	125.00	32180.27	
4	DYS & MINORS PUGCA WORKS	NOS.	12187	101453.31	8187	47494.05	4000.00	53959.26	533.00	668.46	533.00	668.46			7904.00	76440.67	7654	46825.59	250	29615.08	3750.00	24344.18			3750.00	24344.18	
	Earth Work	Km.	8240.00	52790.85	4631.38	17992.36	3608.62	34798.49	648.00	11815.02	648.00	11815.02			5727.00	14738.01	3983.38	6177.34	1743.62	8560.67	1865.00	26237.82			1865.00	26237.82	
	Lining	K.m.	14.36	1102.39	2.00	280.76	12.36	821.63							14.36	1102.39	2.00	280.76	12.36	821.63							
5	ESCAPE CHANNEL PUGCA WORKS	NOS.	81	3840.15	56	901.00	25.00	2939.15							81.00	3840.15	56	901.00	25	2939.15							
	Earth Work	Km.	65.80	3224.98	29.43	284.28	36.37	2940.70							59.80	2174.95	29.43	284.28	30.37	1890.67	6.00	1050.03			6.00	1050.03	
6	DRAINS PUGCA WORKS	NOS.	7016	46538.52	2457	32539.85	4559.00	13998.67	79.00	276.03	79.00	276.03			5762.00	38391.52	2378	32263.82	3384	6127.70	1175.00	7870.97			1175.00	7870.97	
	Earth Work	Km.	9250.00	23269.26	3732.36	9304.47	5517.64	13964.79	164.00	94.77	164.00	94.77			6925.00	22429.83	3568.36	9209.70	3356.64	13220.13	2161.00	744.66			2161.00	744.66	
7	Sharda Garden	Lac	Job	5126.20		4078.99		1047.21								5126.20		4078.99		1047.21							
8	A-Preliminilry	Lac	Job	1070.58		442.01		628.57								1070.58		442.01		628.57							
9	K-Buildings	Lac	Job	4633.20		1512.35		3120.85	0.00	64.94		64.94				4633.20		1512.35		3120.85			38.84		305.20		
10	M-Plantation	Lac	Job	2123.58		611.83		1511.75								2123.58		611.83		1511.75			42.69		1942.81		
11	O-Miscellaneous	Lac	Job	14053.13		7079.59		6973.54	0.00	304.08		304.08				14053.13		7079.59		6973.54			0.15		1451.36		
12	P-Maintenance	Lac	Job	2760.25		2263.09		497.16	0.00	68.78		68.78				2760.25		2263.09		497.16			274.10		137.00		
13	Q-Equipments	Lac	Job	732.31		732.31		0.00	0.00	231.54		231.54				732.31		732.31		0.00			250.00		497.16		
14	R-Communications	Lac	Job	3166.08		1879.89		1286.19								3166.08		1879.89		1286.19							
15	V-Water Courses	Th.He	1200.00	40245.29	175.00	91.30	1025.00	40153.99								1200.00		40245.29		175.00							
16	POTENTIAL	Th.He	1404.00		918.13		485.87									1404.00											
	TOTAL	Lac		632329.14		262295.64		370033.50	0.00	29838.82	92.00	0.00	92.00			985.00	0.00	826.13	0.00	158.87		327.00			280.00	9389.81	
	Less Cost of Tube We	Lac		46774.30		574.30		46200.00	0.00	0.00				0.00		351159.69		225690.13		125469.56	0.00	251330.63		6766.69		244563.94	
	Balance Cost			585554.84		261721.34		323833.50	0.00	29838.82		29838.82		0.00		0.00					0.00	46200.00				46200.00	
	No component of Phase-I, Phase-II and Phase-III													0.00		0.00		225690.13		125469.56	0.00	205130.63		6766.69		198363.94	

No component of Phase-I, Phase-II and Phase-III in not being repeatitive in inclusion

20-12-11  
CE Saryu-I  
Faizabad.

20/12/11  
AE Saryu-I  
Gonda



**DETAILS OF WORKS UNDER PHASE-I (Completed in 1997 for cost of  
Rs. 298.38 Cr.)**

**A- HEAD WORKS**

- 1- Head Regulator of Saryu Link Canal
- 2- Saryu Barrage
- 3- Rapti Barrage
- 4- Head of Utraula Pump Canal
- 5- Head of Dumariyaganj Pump Canal

**B- MAIN CANAL AND BRANCHES**

- 1- Saryu Link Canal/Channel
- 2- Saryu Main Canal
- 3- Imamganj Branch

**C- DISTRUBUTION SYSTEM**

- 1 Saryu Main Canal Systems
- 2 Imamganj Branch System

**D- PUCCA WORKS OF MAIN CANAL**

- 1- Cross Drainage Works/Syphon for Saryu Link Canal
- 2- Cross Drainage Works/Syphon for Saryu Main Canal

**E- PUCCA WORKS OF DISTRIBUTORIES**

- 1 Pucca Works of Saryu Canal Systems
- 2 Pucca Works Imamganj Branch System

**DETAILS OF WORKS UNDER PHASE-II (1997 to 2013)**

**A- HEAD WORKS**

- 1- Pump House Ayodhya Pump Canal
- 2- Pump House Gola Pump Canal

**B- MAIN CANAL AND BRANCHES**

- 1- Basti Branch#
- 2- Gonda Branch#
- 3- Bansi Branch#
- 4- Tarabganj Branch#
- 5- Itiyathoke Branch#
- 6- Mankapur Branch\*#
- 7- Khalilabad Branch

**C- DISTRUBUTION & MINOR SYSTEM**

- 1- Basti Branch Dy & Minor System
- 2- Gonda Branch Dy & Minor System\*
- 3- Bansi Branch Dy & Minor System\*
- 4- Tarabganj Branch Dy & Minor System
- 5- Itiyathoke Branch Dy & Minor System\*
- 6- Mankapur Branch Dy & Minor System\*
- 7- Khalilabad Branch Dy & Minor System\*

**D- PUCCA WORKS OF ABOVE BRANCH, DY. & MINORS\***


\* Balance works of cost Rs. approximately 1255.00 crore will continue in Phase-III also.

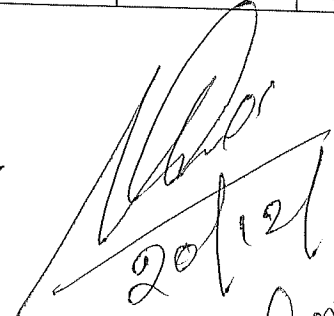
# Some part length of these Canals & Systems has been funded by NABARD

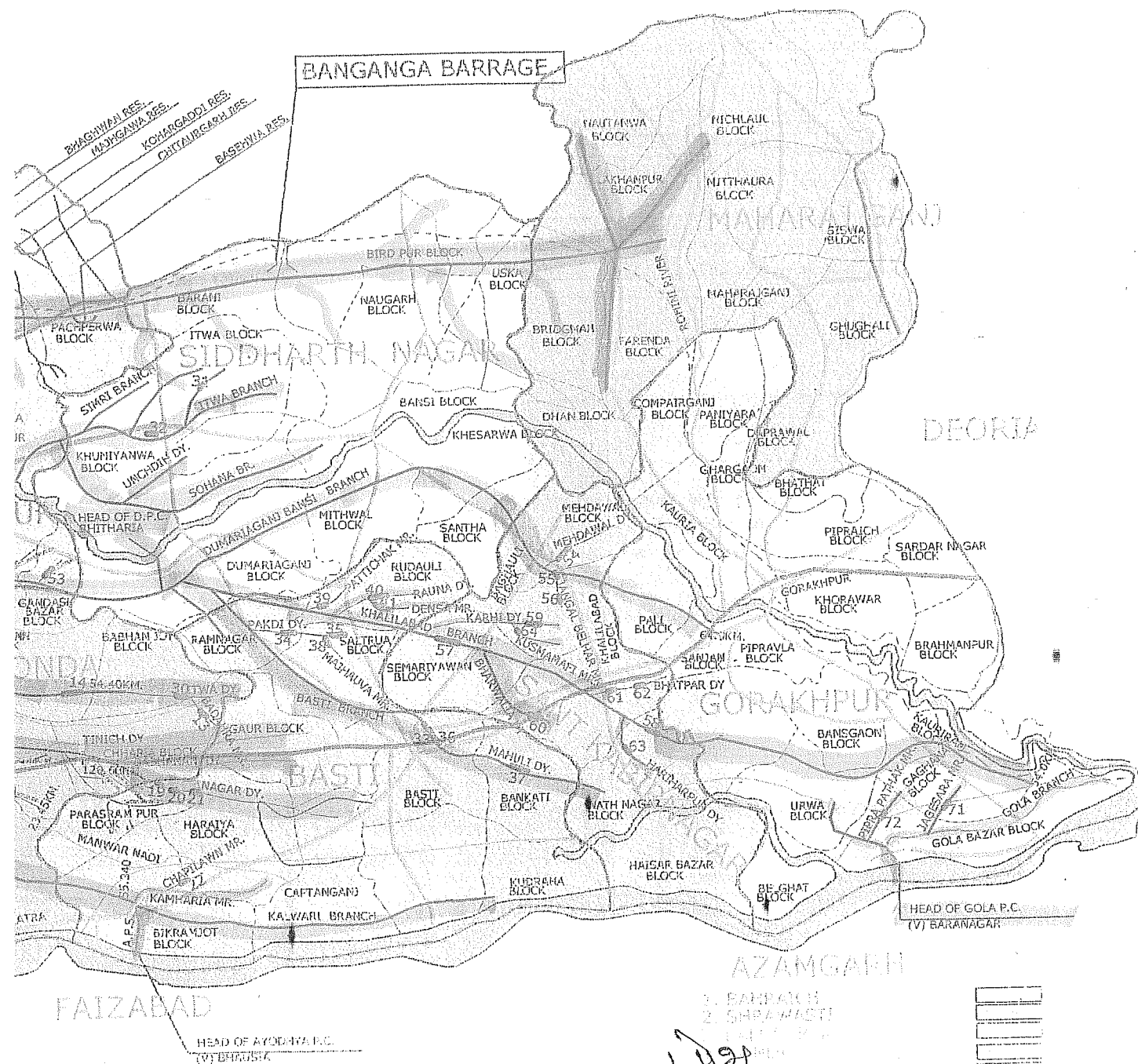
**DETAILS OF WORKS UNDER PHASE-III (April, 2011 to March, 2016)**

Sl. No.	Name of Canal	Offtake Point		C.C.A. of canal	Irrigation Potential	Length of canal
		Chainage	Bank			
1	2	3		4	5	6
1	Chaubepurva Minor	13.000	R	1000	1170.00	7.000
2	Tendua Minor	16.000	R	1000	1170.00	7.000
3	Barbhawa Minor	18.200	R	1015	1188.00	7.500
4	Badalpur Minor	20.600	R	985	1152.00	7.000
5	Bankatwa Dy.	22.800	R	3900	4563.00	28.000
6	Birpur Minor	25.700	R	975	1141.00	7.000
7	Vishnapur Minor	28.000	R	925	1082.00	7.000
8	Ayodhyapur Minor	29.200	R	1025	1199.00	7.500
9	Luxmanpur Dy.	31.100	R	4675	5470.00	33.500
10	Jokhwa Minor	34.100	R	1250	1463.00	9.000
11	Imaliya Minor	36.550	R	940	1100.00	7.000
12	Sugga Nagar Minor	38.200	R	990	1158.00	7.000
13	Sahjanwa Minor	40.200	R	970	1135.00	7.000
14	Khairman Dy.	42.100	R	4052	4741.00	29.000
15	Sikri Minor	44.600	R	1200	1404.00	9.000
16	Amvapur Minor	45.600	R	1175	1375.00	8.500
17	Motipur Minor	47.200	R	1200	1404.00	8.500
18	Bhujehra Minor	51.300	R	1125	1316.00	8.000
19	Gulra Mafi Minor	53.800	R	940	1100.00	7.000
20	Gulariha Dy.	54.600	R	4000	4680.00	29.000
21	Girgitti Dy.	54.930	R	3420	4001.00	24.500
22	Hisampur Dy.	55.800	R	3200	3744.00	23.000
23	Shankarpur Dy.	56.250	R	920	1076.00	7.000
24	Gopalpur Minor	58.240	R	990	1158.00	7.500
25	Lalankar Dy.	61.000	R	3300	3861.00	23.500
26	Mahadeva Minor	53.000	R	975	1141.00	7.000
27	Beli Dy.	65.700	R	3850	4505.00	28.000
28	Bankatwa Dy.	67.100	R	3850	4505.00	28.000
29	Sonpur Minor	69.000	R	955	1117.00	7.000
30	Patan Dy.	69.500	R	4750	5558.00	35.000
31	Sheetalpur Dy.	69.962	R	3695	4323.00	27.000
32	Lauki Dy.	73.200	R	3750	4388.00	28.000
33	Bhagwanpur Dy.	74.120	R	3725	4358.00	27.000
34	Semri Minor	75.800	R	945	1106.00	7.000
35	Halaura Dy.	77.600	R	3520	4118.00	26.000
36	Prempur Minor	78.680	R	990	1158.00	8.000

Sl. No.	Name of Canal	Offtake Point		C.C.A. of canal	Irrigation Potential	Length of canal
		Chainage	Bank			
1	2	3		4	5	6
37	Prempur Dy.	78.900	R	3680	4306.00	27.000
38	Durgapur Minor	79.300	R	970	1135.00	7.000
39	Chaipurwa Dy.	80.700	R	3755	4393.00	27.000
40	Mahuwapur Dy.	82.017	R	3525	4124.00	26.000
41	Thakurapur Minor	82.400	R	3730	4364.00	27.000
42	Jamdhara Dy.	86.600	R	4730	5534.00	34.000
43	Sugaaon Dy.	88.200	R	4740	5546.00	34.000
44	Pachperwa Dy.	90.300	R	3560	4165.00	26.000
45	Shankarpur Dy.	98.600	R	4525	5294.00	33.000
46	Luxminagar Minor	101.700	R	980	1147.00	7.000
47	Triok Nagar Dy.	102.500	R	5050	5909.00	36.000
48	R.M.C.	0.00-102.50	R	10000	11700.00	102.500
49	Baradpur Dy.	103.200	R	9000	10530.00	65.000
50	Nogarh Dy.	107.000	R	12000	14040.00	86.000
51	Uskapur Dy.	111.200	R	14000	16380.00	100.000
52	Brijmanganj Dy.	114.000	R	16025	18749.00	115.000
53	Nautanwa Dy.	115.000	L	22000	25740.00	157.000
54	Lajmanpur Dy.	117.000	L	22500	26325.00	161.000
55	Fareda Dy.	121.000	R	23553	27557.00	168.000
56	Kampiarganj Dy.	124.200	R	24500	28665.00	175.000
57	R.M.C.	102.50-125.00	R	11000	12870.00	22.500
	<b>TOTAL</b>			<b>280000</b>	<b>327600.00</b>	<b>1990.000</b>

  
 20-12-11  
 CE Sangli-I  
 Farzabad

  
 20/12/11  
 CE Sangli II  
 Gonda



SE

Sanyu Panigajno  
U.P. Registration

### BEFORE AIBP

A cost of Rs. 298.38 crore works were completed and no liability on behalf of Govt. of India. The Potential created against above expenditure is 0.92 Lac Hect. In above expenditure following works is completed :-

#### A- HEAD WORKS

- 1- Head Regulator of Saryu Link Canal
- 2- Saryu Barrage
- 3- Rapti Barrage
- 4- Head of Utraula Pump Canal
- 5- Head of Dumariyaganj Pump Canal

#### B- MAIN CANAL AND BRANCHES

- 1- Saryu Link Canal/Channel
- 2- Saryu Main Canal
- 3- Imamganj Branch

#### C- DISTRIBUTION SYSTEM

- 1 Saryu Main Canal Systems
- 2 Imamganj Branch System

#### D- PUCCA WORKS OF MAIN CANAL

- 1- Cross Drainage Works/Syphon for Saryu Link Canal
- 2- Cross Drainage Works/Syphon for Saryu Main Canal

#### E- PUCCA WORKS OF DISTRIBUTORIES

- 1 Pucca Works of Saryu Canal Systems
- 2 Pucca Works Imamganj Branch System

### Year 2000

Approved cost of Saryu Nahar Pariyojna was 2765.16 crore on price level 1998 including Phase-I, II & III to create 14.04 lac hac potential and approved in 72nd TAC conducted on 18 January, 2000.

Yearwise Physical & Financial Progress as bellow.

Year	Physical	Financial
Upto 2000	Pump House Gola Pump Canal, Partly length of Gonda Branch, Basti Branch, Itiyathoke Branch, Mankapur Branch, Pucca Works of abvoe branches Dys. & Minors Upto Year 2000 1.88 lac hect. potential created.	478.57
2000-01	Const. of intake of Ayodhya Pump Canal, Partly length of Gonda Branch, Basti Branch, Tarabganj Branch, Itiyathoke Branch, Mankapur Branch, Pucca Works of abvoe branches Dys. & Minors and	113.53

	0.27 lac hect. Potential created.	
2001-02	Const. of Pump House Ayodhya Pump Canal, Partly length of Gonda Branch, Basti Branch, Tarabganj Branch, Itiyathoke Branch, Mankapur Branch, Ayodhya Main Canal, Pucca Works of abvoe branches Dys. & Minors and 0.34 lac hect. Potential created.	166.33
2002-03	Completion of Pump House Ayodhya Pump Canal, Partly length of Gonda Branch, Basti Branch, Tarabganj Branch, Khalilabad Branch, Itiyathoke Branch, Mankapur Branch, Ayodhya Main Canal, Kalwari Branch, Khamariya Dy., Kaisarganj Dy., Fakarpur Dy., Pucca Works of abvoe branches Dys. & Minors and 0.48 lac hect. Potential created.	204.52
2003-04	Partly length of Rapti Link Channel, Gonda Branch, Basti Branch, Tarabganj Branch, Khalilabad Branch, Itiyathoke Branch, Mankapur Branch, Ayodhya Main Canal, Kalwari Branch, Khamariya Dy., Kaisarganj Dy., Fakarpur Dy., Mankapur Branch, Pucca Works of abvoe branches Dys. & Minors and 0.197 lac hect. Potential created.	185.95
2004-05	Partly length of Rapti Link Channel, Gonda Branch, Basti Branch, Tarabganj Branch, Khalilabad Branch, Itiyathoke Branch, Mankapur Branch, Ayodhya Main Canal, Kalwari Branch, Bansi Branch, Sohna Branch Khamariya Dy., Semri Dy., Mankapur Branch, Pucca Works of abvoe branches Dys. & Minors and 0.65 lac hect. Potential created.	164.57
2005-06	Partly length of Rapti Link Channel, Gonda Branch, Basti Branch, Tarabganj Branch, Khalilabad Branch, Itiyathoke Branch, Mankapur Branch, Kalwari Branch, Bansi Branch, Sohna Branch Khamariya Dy., Semri Dy., Mankapur Branch, Jarwal Dy., Chainpur Dy, Farenda Dy., Pucca Works of abvoe branches Dys. & Minors and 0.95 lac hect. Potential created.	232.59
2006-07	Partly length of Rapti Link Channel, Gonda Branch, Basti Branch, Tarabganj Branch, Khalilabad Branch, Itiyathoke Branch, Mankapur Branch, Bansi Branch, Sohna Branch, Khamariya Dy., Semri Dy., Govindpur Dy., Makoliya Dy., Tulsipur Dy., Dadaura Dy., Nagar Dy., Mankapur Branch, Jarwal Dy., Chainpur Dy, Farenda Dy., Pucca Works of abvoe branches & Dys. & Minors and 0.40 lac hect. Potential created.	279.52

MOU was signed at the total cost of Project Rs. 2522.00 Crore details not submitted to MoWR. Expenditure already incurred 1819.80 crore upto March, 2007 and Potential already developed under AIBP 4.25 lac hect., before AIBP 0.92 lac hect. & under NABARD 3.15 lac hect. total created 8.32 lac hect and additional proposed to create 0.80 lac hect. in Rs. 702.00 crore containing balance work of Phase-I, II & Partly Phase-II (ie. Rapti Link Channel and 16 X-drainage works.)

Completion contents progress as below :-

Year	Physical	Financial
2007-08	Partly length of Rapti Link Channel, Gonda Branch, Basti Branch, Tikri Branch, Khalilabad Branch, Itiyathoke Branch, Mankapur Branch, Banshi Branch, Sohna Branch, Khamariya Dy., Semri Dy., Govindpur Dy., Makoliya Dy., Tulsipur Dy., Dadaura Dy., Nagar Dy., Mankapur Branch, Jarwal Dy., Chainpur Dy, Farenda Dy., Birahimpur Dy., Husainabad Dy., Ahtarampur Dy., Pucca Works of abvoe branches & Dys. & Minors and 0.40 lac hect. Potential created.	256.99
2008-09	Partly length of Escape, Khalilabad Branch, Mankapur Branch, Tikri Branch, Banshi Branch, Makoliya Dy., Dadaura Dy., Nagar Dy., Mankapur Branch, Jarwal Dy., Chainpur Dy, Birahimpur Dy., Husainabad Dy., Ahtarampur Dy., Pucca Works of abvoe branches & Dys. & Minors and 0.335 lac hect. Potential created.	346.42
2009-10	Partly length of Escape, Khalilabad Branch, Tikri Branch, Makoliya Dy., Dadaura Dy., Nagar Dy., Mankapur Branch, Jarwal Dy., Chainpur Dy, Birahimpur Dy., Husainabad Dy., Khantara Dy, Mehdawal Dy., Benipur Dy., Utraula Dy., Chaisar Dy., Janki Nagar Dy., Ahtarampur Dy., Pucca Works of abvoe branches & Dys. & Minors and 0.068 lac hect. Potential created.	56.02
2010-11	Partly length of Escape, Tikri Branch, Jarwal Dy., Chainpur Dy, Birahimpur Dy., Husainabad Dy., Khantara Dy, Mehdawal Dy., Benipur Dy., Utraula Dy., Chaisar Dy., Janki Nagar Dy., Harharpur Dy., Bhatpur Dy., Rauna Dy., Gangrauly Dy, Dhanaipatti Dy., Itwa Branch, OOchdih Dy, Ahtarampur Dy., Pucca Works of abvoe branches & Dys. & Minors and 0.068 lac hect. Potential created.	143.52

Total expenditure of project upto 03/11 is Rs. 2622.95 crore against creation of 9.18 lac hect. potential.

Submission of MOU year 2011-12



Project approved/investment clearance by Planning Commission in April, 2010 for the cost of Rs. 7270.33 Crore in which the cost of work is Rs. 6323.29 crore. Expenditure incurred upto 03/2011 Rs. 2622.95 crores and created 9.18 lac hect. Potential. Balance cost of work Rs. 3700.33 crore including cost of 3500 augmentation tube wells to create 4.86 lac hect. Potential.

**For National Project.**

Balance cost of the Project after deduction of cost of Tubewells (ie Rs. 3700.33 - 462.00) is Rs. 3238.33 crore.

Phase -III	1983.63 crore
Balance of Phase-II	1254.70 crore
<b>Total</b>	<b>3238.33 crore</b>

Details are enclosed on Annexure-IV & V

SE IX  
Surya Parijayana.



भारत सरकार



**NATIONAL PROJECTS DIRECTORATE  
CENTRAL WATER COMMISSION**

2B, 8<sup>th</sup> Floor (N), Sewa Bhawan,  
R.K. Puram Sector-1, New Delhi-110066

राष्ट्रीय परियोजना निदेशालय  
केन्द्रीय जल आयोग



Tele/Fax: 011-29583395  
Email: np1dte@gmail.com

CWC U. O. No. 3/9/2012/NP-II/Vol- V/ 109-21

Dated: 19 January, 2018

**OFFICE MEMORANDUM**

**Sub: Fast Track Proforma Clearance of Revised Cost Estimate (RCE) in respect of Saryu Nahar Pariyojana (National Project), Uttar Pradesh, Estimated Cost Rs 9802.67 Cr (Cost of components of National Project = Rs 5803.61 Cr) at Price Level 2016 – Reg.**

The undersigned is directed to convey the approval of the competent authority that the Saryu Nahar Pariyojana (National Project), Uttar Pradesh, the salient features of which are given as the enclosed Annexure-A, has been considered acceptable with conditions given below for Fast Track Proforma Clearance with an Estimated Cost of Rs 9802.67 Cr (Rupees Nine Thousand Eight Hundred two Crores and Sixty Seven lakhs Only) at 2016 Price Level (PL) including cost of National Project (NP) Component of Rs 5803.61 Cr. The cost of National project does not include the cost of CAD-WM programme.

The above cost has been accorded Administrative Approval by the State Govt vide Govt. Resolution No. 177/2017/4106/17-27-lrr-9-49SAV/08TC dated 21.12.2017 based on recommendation by State Level Sanctioning Committee (SLSC) vide letter No. 1680/12-5-2017-100 (10)/15 dated 29.12.2017 (meeting held on 04.12.2017).

The cost of National Project Component has increased to Rs 5803.61 Cr (PL 2016) as against approved cost of AIBP (NP) components of Rs 3011.53 Cr (PL 2008) as on 01.04.2012 i.e. 92.71% increase.

The last approved cost of the project was Rs 7270.32 Cr (cost of component of National Project = Rs 3011.53 Cr) at PL 2008, which has the Investment Clearance (IC) of the erstwhile Planning Commission, Govt. of India vide its letter No. 2(287)2010 dated 16.04.2010. The latest cost of AIBP (NP) component of the project shows an increase of Rs 2792.08 Cr with respect to previous cost.


The requisite details have been submitted by the Project Authority as per the guidelines and duly filled Annexures for Fast Track Proforma Clearance of the 99 priority projects,

**Conditions:**

- 1) The cost would be treated as full and final till completion and no further escalation shall be entertained.
- 2) The project shall be completed in the financial year 2019-20 as per the agreed MoU.
- 3) In order to emphasize centrality of the Command Area Development (CAD) to the project as well as for its seamless integration of work to the head reaches and the tail end of the command, the project authority should fully ensure the hydraulic connectivity of irrigation water right from reservoir to farm gate and pari-passu action in the command area.
- 4) Depending upon topography, climate, hydro-geological nature of the command area pipeline based field channels should be encouraged.
- 5) The State Government should ensure that the conditions laid down by the statutory agencies specially erstwhile Ministry of Environment and Forest, Tribal Affairs, Social Welfare etc. are fully complied.

- 6) As the CCA of the project has been changed by the Project Authorities, so they should ensure the satisfactory compliances to the comments/observations of CWC on hydrology, irrigation planning aspects, etc. within a week time, so that the project may be cleared from above mentioned aspects.
- 7) The beneficiary farmers may be encouraged to take over the canal system after completion for operation and maintenance including transfer of system to beneficiary farmers for O&M and groundwater level monitoring, measures to combat water logging etc. in post project scenario needs to be fully ensured.
- 8) All the other conditions mentioned in the Investment Clearance of the erstwhile Planning Commission letter dated 16.04.2010 need to be fully ensured.
- 9) Project Authority should update the MIS data of the Project as per the latest approved estimate by 25.01.2018. Further Central Assistance proposal will be entertained subject to regular updation of MIS data.
- 10) Project Authorities would initiate the process for obtaining the necessary Statutory Clearances if so required from MoEF & CC and MoTA, due to change in location/command area of the project at their end.

Encl.: As above

  
19.01.18  
(R. P. S. Verma)  
Director (NP), CWC

To,

**The Principal Secretary,  
Irrigation and Water Resources,  
Govt. of Uttar Pradesh,  
Bapu Bhawan, Lucknow,  
Uttar Pradesh – 226001.**

Copy to:

**Ministry of WR, RD & GR, Shram Shakti Bhawan, New Delhi.**

1. Secretary, Ministry of WR, RD & GR, Shram Shakti Bhawan, New Delhi.
2. JS & FA, Ministry of WR, RD & GR, Shram Shakti Bhawan, New Delhi.
3. Commissioner (SPR), Ministry of WR, RD & GR, Shram Shakti Bhawan, New Delhi.

**NITI Aayog**

1. Joint Adviser, NITI Aayog, New Delhi

**Central Water Commission**

1. Chairman, Central Water Commission, Sewa Bhawan, New Delhi.
2. Member (WP&P), Central Water Commission, Sewa Bhawan, New Delhi.
3. Chief Engineer, PAO, Central Water Commission, Sewa Bhawan, New Delhi.
4. Chief Engineer, PMO, Central Water Commission, Sewa Bhawan, New Delhi.
5. Chief Engineer, UGBO, Central Water Commission, Lucknow, U.P.

**State Government**

1. Engineer –in- Chief, Irrigation & Water Resources Deptt., Cantt. Road, Lucknow, U.P.
2. Chief Engineer, Saryu Nahar Pariyojna - I, Irrigation & Water Resources Deptt., Faizabad, U.P.
3. Chief Engineer, Saryu Nahar Pariyojna - II, Irrigation & Water Resources Deptt., Gonda, U.P.

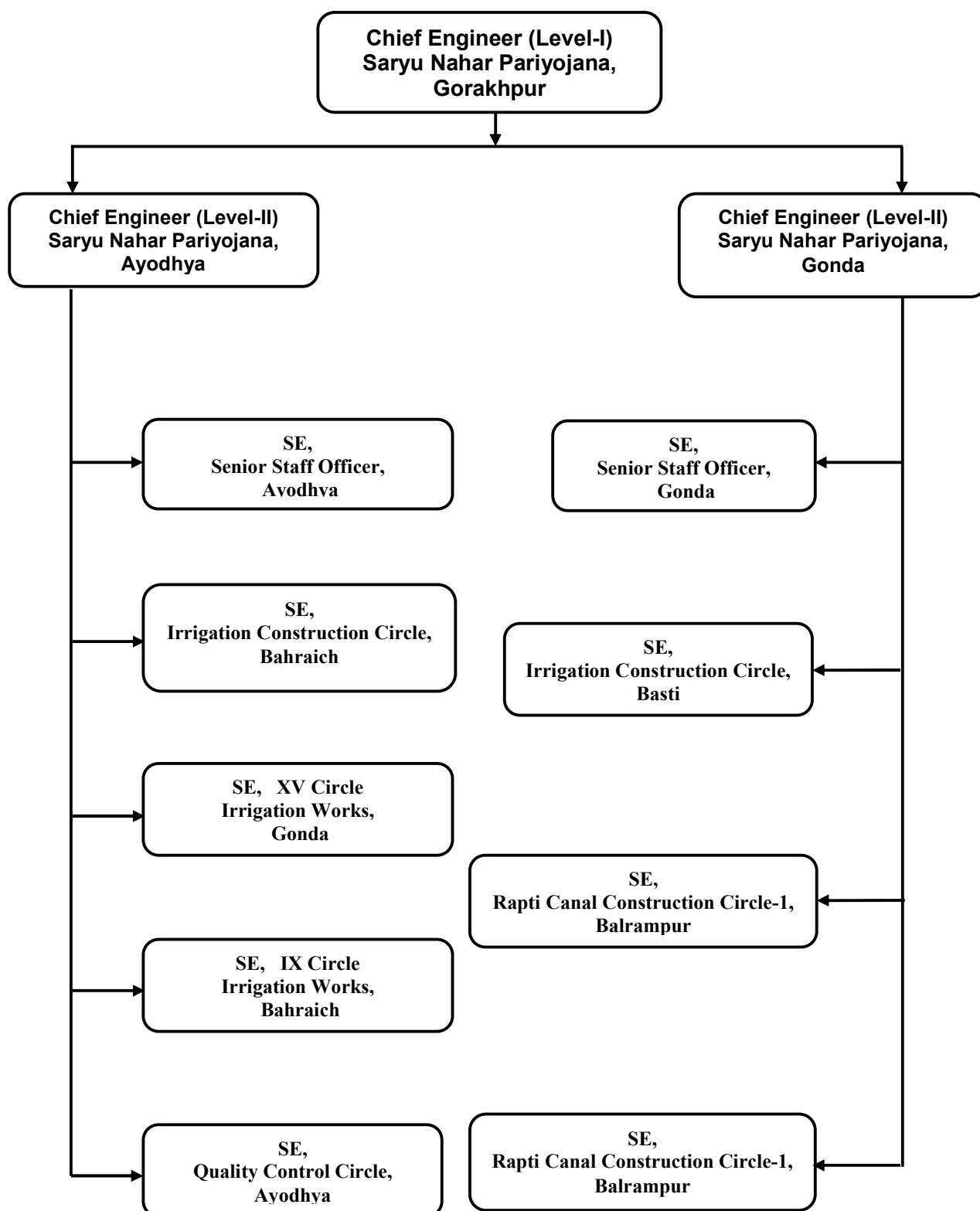


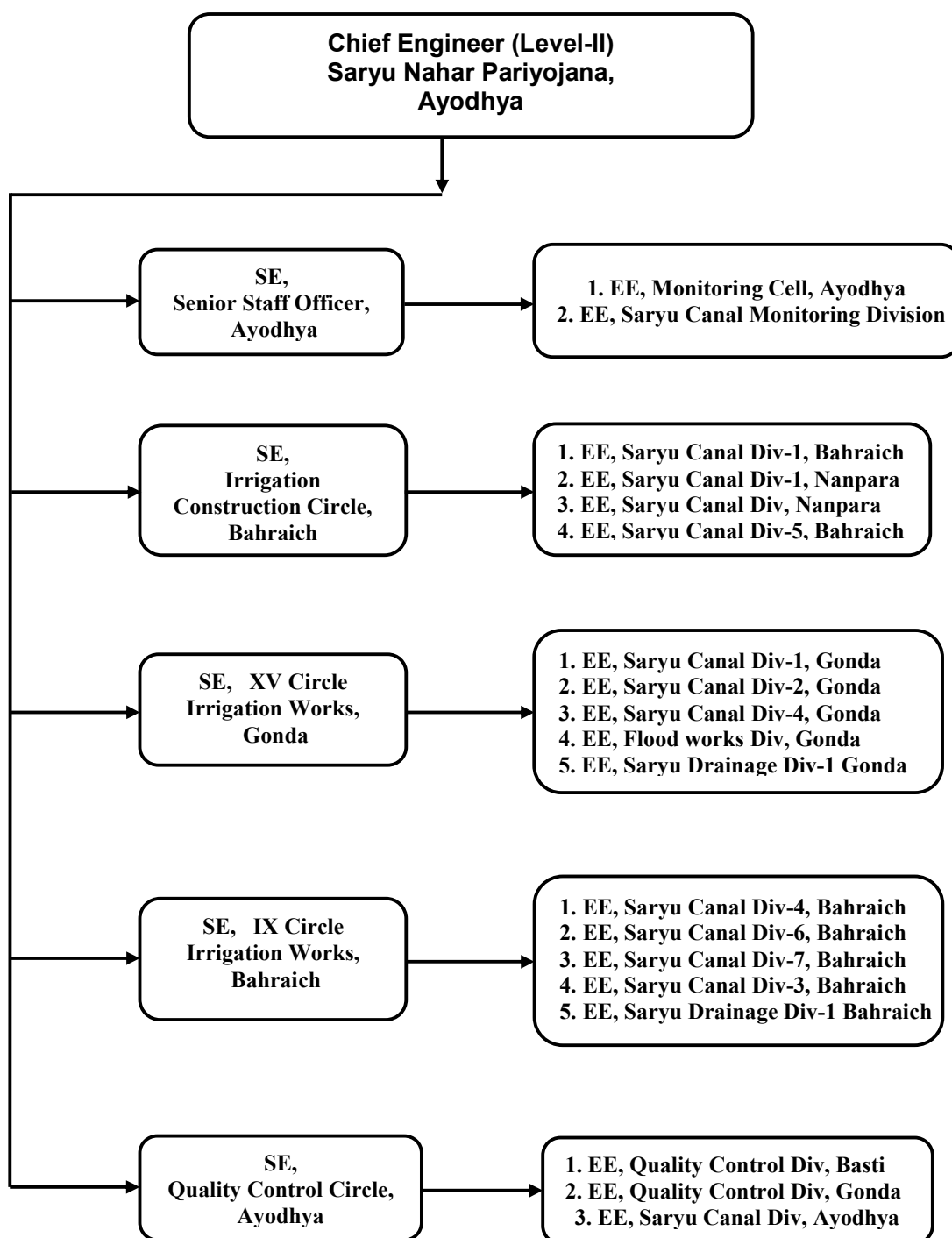
## SARYU NAHAR PARIYOJNA

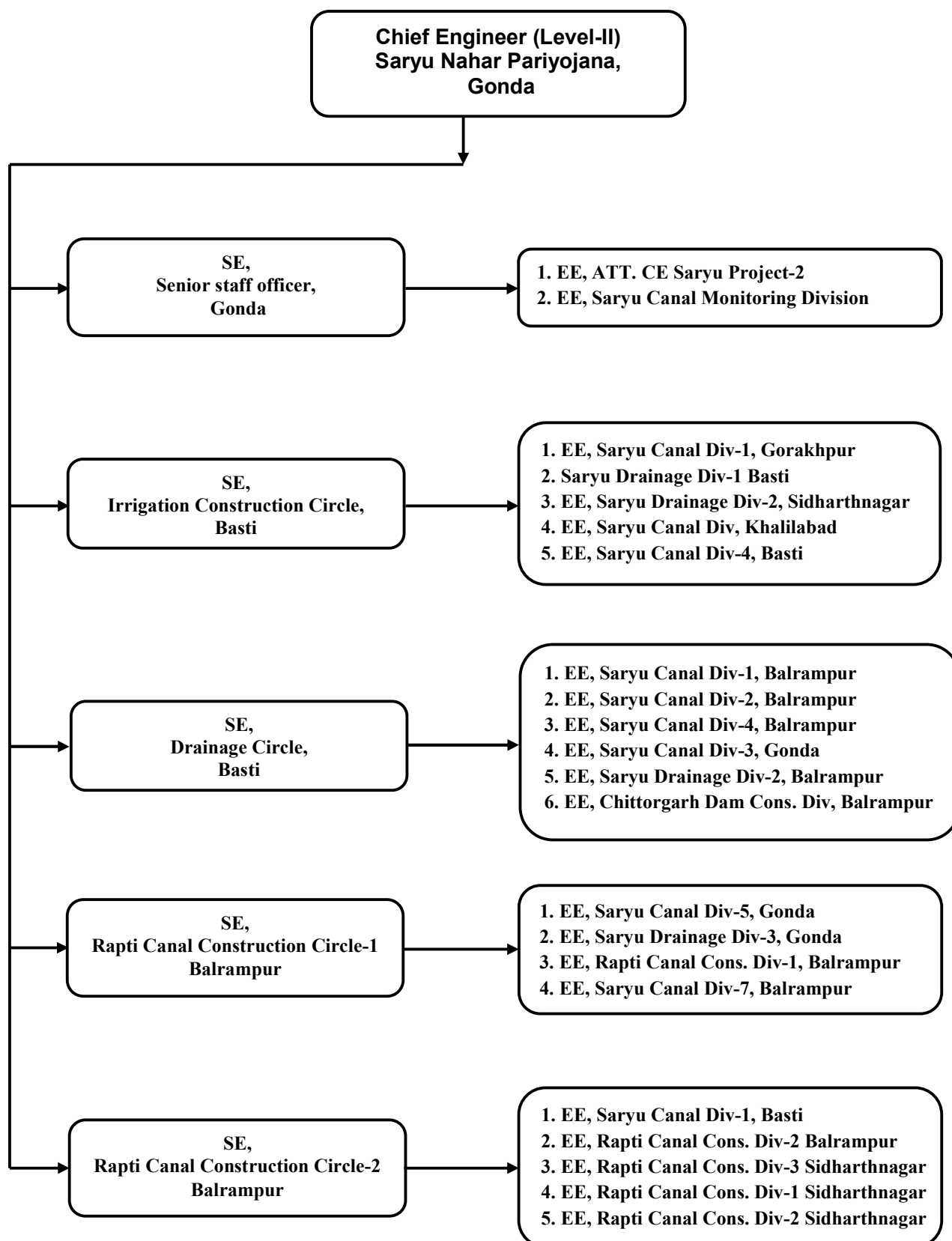
## SALIENT FEATURES

S.No	Description	As per approved Revised Proposal at PL 2008	As per Revised Estimate at PL 2016
1	2	3	3
1	<b>Location of Dam</b>		
	State	Uttar Pradesh	Uttar Pradesh
	Tahsil		
	District	Bahraich, Shravasti, Balrampur, Gonda, Basti, Sant kabir Nagar, Maharajganj, Siddharthnagar, Gorakhpur	Bahraich, Shravasti, Balrampur, Gonda, Basti, Sant kabir Nagar, Maharajganj, Siddharthnagar, Gorakhpur
	Village		
	Latitude		
	Longitude		
2	<b>Name of River</b>		
	Name of basin	Ghagara, Saryu, Rapti	Ghagara, Saryu, Rapti
3	<b>i) Catchment Area (Sqm)</b>	56693.44 sq km	56693.44 sq km
4	<b>Average annual rainfall in the catchment</b>	945.30 mm	945.30 mm
5	<b>Average Monsoon rainfall in the catchment</b>	868.90 mm	868.90 mm
6	<b>Canal</b>		
	i) Type of Canal	Unlined (Saryu)      Unlined (Rapti)	Unlined (Saryu)      Unlined (Rapti)
	ii) Bed width	69.60 m      36.00 m	69.60 m      36.00 m
	iii) FSD	4.50 m      2.70 m	4.50 m      2.70 m
	iv) Free board	0.75 m      0.75 m	0.75 m      0.75 m
	v) Side slope	1.5:1      1.5:1	1.5:1      1.5:1
	vi) Bed gradient	0.09      0.2	0.09      0.2
	vii) Dischrge cumecs	360      95	360      95
	viii) Length	63.15 km      147.85 km	63.15 km      125.85 km
7	<b>Command area in Hactare</b>		
	GCA	16.00 lac lac	16.00 lac lac
	CCA	12.00 lac ha	11.29 lac ha
	IP	14.04 lac ha	14.04 lac ha
8	<b>Financial aspects</b>		
	i) Estimated Cost	7270.32 Cr	9802.68 Cr
	ii) BC ratio	1.84	1.77
	iii) Internal rate of return		8.70%
	iv) Cost per Hectare of Annual cost	52204.56 / Ha	69819.65 / Ha
	v) Gross Revenue	355.04	13696.92
	vi) Net Annual Benefit	176607.68	290333.05
	vii) Annual cost	95982.43	164446.31

### Organization Chart







संख्या-177/2017/4106/17-27-सिं-9-49एसएवी/08टीसी

प्रेषक,

मुश्ताक अहमद

संयुक्त सचिव,

उ०प्र० शासन ।

सेवा में,

प्रमुख अभियन्ता एवं विभागाध्यक्ष,

सिंचाई जल संसाधन विभाग,

उ०प्र०, लखनऊ।

सिंचाई एवं जल संसाधन अनुभाग-9  
2017

लखनऊ : दिनांक 21 दिसम्बर,

**विषय:-** सरयू नहर राष्ट्रीय परियोजना के तृतीय पुनरीक्षित परियोजना की व्यय वित्त समिति की बैठक दिनांक 07.10.2017 द्वारा अनुमोदित लागत रु० 9802.68 करोड़ के व्यय के प्रस्ताव की प्रशासकीय एवं वित्तीय स्वीकृति के सम्बन्ध में ।

महोदय,

उपर्युक्त विषयक अधीक्षण अभियन्ता, अनु० एवं नियो० मण्डल-4, सिंचाई एवं जल संसाधन विभाग के पत्र संख्या-110/अनिम-4/योप्र०, दिनांक 01.11.2017 के सन्दर्भ में मुझे यह कहने का निदेश हुआ है कि सरयू नहर राष्ट्रीय परियोजना के तृतीय पुनरीक्षण की व्यय वित्त समिति की बैठक दिनांक 07.10.2017 द्वारा रु० 9802.68 करोड़ की लागत पर अनुमोदित की गयी है।

2- वित्त मंत्रालय, भारत सरकार के सर्कुलर संख्या-32/पीएसओ/एफएस/2015, दिनांक 28.10.2015 में यह निर्णय लिया गया है कि प्रधानमंत्री कृषि सिंचाई योजना में केन्द्र एवं राज्य का अंश 60:40 होगा। सरयू नहर राष्ट्रीय परियोजना वित्तीय वर्ष 2015-16 एवं इससे आगे प्रधानमंत्री कृषि सिंचाई योजना का अंश है। वित्त विभाग के शासनादेश संख्या-8/2015/बी-1-4058/दस-2015-13/2015, दिनांक 09.11.2015 में दी गयी व्यवस्था के अनुसार सरयू नहर राष्ट्रीय परियोजना को प्रधानमंत्री कृषि सिंचाई योजना में सम्मिलित किये जाने के फलस्वरूप केन्द्र सरकार द्वारा 60 प्रतिशत तथा राज्य सरकार द्वारा 40 प्रतिशत धनराशि वहन करने पर शासनादेश संख्या-1744/16-27-सिं-9-49एसएवी/08टीसी, दिनांक 12.08.2016 द्वारा निर्णय लिया गया है।

3- वित्त विभाग के शासनादेश दिनांक 26.08.2014 के प्रस्तर-5 के अनुसार सरयू नहर राष्ट्रीय परियोजना के तृतीय पुनरीक्षित परियोजना की अनुमोदित लागत रु० 9802.68 करोड़ के व्यय के प्रस्ताव पर सक्षम स्तरका अनुमोदन प्राप्त किया गया है। अतः पुनरीक्षित परियोजना की लागत रु० 9802.68 करोड़ के व्यय के प्रस्ताव की प्रशासकीय एवं वित्तीय स्वीकृति निम्नलिखित शर्तों के अधीन श्री राज्यपाल सहर्ष प्रदान करते हैं:-

--2

1- यह शासनादेश इलेक्ट्रानिकली जारी किया गया है, अतः इस पर हस्ताक्षर की आवश्यकता नहीं है ।

2- इस शासनादेश की प्रमाणिकता वेब साइट <http://shasanadesh.up.nic.in> से सत्यापित की जा सकती है ।



--2--

- (1) प्रश्नगत परियोजना के कार्य प्रारम्भ करने से पूर्व वित्तीय हस्तपुस्तिका खण्ड-6 के अध्याय-12 के प्रस्तर-318 में वर्णित व्यवस्था के अनुसार प्रायोजना पर सक्षम स्तर पर तकनीकी स्वीकृति अवश्य प्राप्त कर ली जाएगी तथा सक्षम स्तर से तकनीकी स्वीकृति प्राप्त होने के पश्चात् ही कार्य प्रारम्भ किया जाएगा।
- (2) मात्राओं को निर्माण के समय सुनिश्चित किये जाने का पूर्ण उत्तरदायित्व कार्यदायी संस्था/विभाग का होगा।
- (3) प्रायोजना का निर्माण कार्य ससमय पूर्ण करा लिया जाना सुनिश्चित किया जायेगा।
- (4) स्वीकृत धनराशि का व्यय वित्तीय हस्तपुस्तिकाओं के सुसंगत प्राविधानों, समय-समय पर शासन द्वारा निर्गत शासनादेशों में निहित प्राविधानों का अनुपालन करते हुये समयबद्ध रूप से सुनिश्चित किया जायेगा।
- (5) स्वीकृत धनराशि का उपयोग स्वीकृत प्रायोजन पर ही किया जायेगा, अन्यथा की स्थिति में किसी प्रकार की अनियमितता के लिये इसका समस्त उत्तरदायित्व विभाग का होगा।
- (6) उक्त धनराशि को कोषागार से एकमुश्त न आहरित कर आवश्यकतानुसार आहरित कर व्यय किया जायेगा तथा आहरित धनराशि बैंक/डाकघर/पीओएल/डिपाजिट खाते में न रखी जाये।
- (7) विभाग द्वारा नियमानुसार समस्त आवश्यक वैधानिक अनापत्तियां एवं पर्यावरणीय क्लीयरेंस सक्षम स्तर से प्राप्त करके ही निर्माण कार्य प्रारम्भ किया जाय।
- (8) प्रायोजनान्तर्गत प्रस्तावित कार्यों की द्वावृत्ति (डुप्लिकेसी) को रोकने की दृष्टि से प्रायोजना की स्वीकृति से पूर्व विभाग द्वारा सुनिश्चित किया जायेगा कि यह कार्य पूर्व में किसी अन्य योजना/कार्यक्रम के अन्तर्गत न तो स्वीकृत है और न वर्तमान में किसी अन्य योजना/कार्यक्रम में आच्छादित किया जाना प्रस्तावित है।
- (9) 1 प्रतिशत लेबर सेस की धनराशि इस शर्त के अधीन होगी कि श्रम विभाग को उक्त धनराशि का भुगतान किया जाएगा।
- (10) उक्त धनराशि का वित्त (आय-व्ययक) अनुभाग-1 कार्यालय ज्ञाप सं0-8/2017/बी-1-1190/दस-2017-231/2017 दिनांक 03.08.2017 में उल्लिखित दिशा निर्देशों एवं शर्तों के अन्तर्गत ही किया जायेगा तथा बजट मैनुअल में वर्णित प्राविधानों के अन्तर्गत व्यय का प्रमाण-पत्र उपलब्ध कराया जायेगा।
- (11) विभाग द्वारा वित्त (आय-व्ययक) अनुभाग-1 के कार्यालय ज्ञाप संख्या-8/2017/बी-1-1190/दस-2017-231/2017 दिनांक 03.08.2017 में वित्तीय स्वीकृतियों निर्गत किये जाने के सम्बन्ध में दिये गये दिशा निर्देशों का अनुपालन सुनिश्चित किया जायेगा।
- (12) विभाग द्वारा पुनरीक्षित परियोजना पर सक्षम स्तर से वित्तीय स्वीकृति प्राप्त होने के पश्चात् अवशेष कार्य कराए जा सकेंगे।
- (13) प्रायोजना प्रस्ताव में भूमि अध्याप्ति हेतु लागत का प्राविधान किया गया है। अतः प्रशासकीय विभाग द्वारा भूमि का क्रय सुसंगत वित्तीय नियमों के अन्तर्गत सुनिश्चित किया जाय।

--3

1- यह शासनादेश इलेक्ट्रानिकली जारी किया गया है, अतः इस पर हस्ताक्षर की आवश्यकता नहीं है।

2- इस शासनादेश की प्रमाणिकता वेब साइट <http://shasanadesh.up.nic.in> से सत्यापित की जा सकती है।

- (14) प्रायोजना हेतु प्राप्त होने वाले केन्द्रांश की धनराशि को समय से प्राप्त किए जाने हेतु विशेष रूप से गम्भीर प्रयास किए जाए ताकि प्रायोजना समय से पूर्ण हो सके।
- (15) विभाग/कार्यदायी संस्था द्वारा प्रायोजना में 254.45 किमी<sup>0</sup> गैप्स को प्राथमिकता पर पूर्ण कराया जाना सुनिश्चित किया जाए ताकि सृजित सिंचन क्षमता में से बाधित सिंचन क्षमता 3.10 लाख हे० का लाभ उस क्षेत्र के कृषकों को मिलना प्रारम्भ हो जाए।
- (16) परियोजना की महत्ता एवं विशालता के दृष्टिगत इसके गुणवत्ता नियंत्रण एवं समयबद्धता को सुनिश्चित किए जाने हेतु विभाग के स्तर पर एक उच्च स्तरीय समिति का गठन किया जाय। यह समिति प्रश्नगत प्रायोजना में प्रस्तावित कार्यों की प्रगति का सतत अनुश्रवण करे ताकि प्रायोजना का कार्य गुणवत्तापूर्वक एवं समयबद्ध रूप से पूर्ण हो जाए।
- (17) प्रशासकीय विभाग द्वारा यह सुनिश्चित कर लिया जाएगा कि सरयू नहर परियोजना से सम्बन्धित एक अन्य प्रायोजना यथा-सरयू नहर परियोजना की चलित नहरों की क्षमता पुनर्स्थापना कार्य हेतु व्यय वित्त समिति द्वारा रु० 139.49 करोड़ की अनुमोदित लागत की वित्तीय स्वीकृति निर्गत हुई है अथवा नहीं। यदि वित्तीय स्वीकृति निर्गत की गयी है तो यह कार्य प्रश्नगत प्रायोजना में सम्मिलित तो नहीं है ताकि द्विराबृत्ति न हो।
- (18) पुनः पुनरीक्षित प्रयोजना में कराये गये कार्यों की लागत को प्रायोजना की लागत में यथावत सम्मिलित किया गया है, जिसका समस्त उत्तरदायित्व विभाग/कार्यदायी संस्था का होगा।
- (19) प्रभाग द्वारा प्रायोजनान्तर्गत प्रस्तावित कार्यों की मात्राओं को यथावत मानते हुए मात्र दरों का परीक्षण किया गया है।
- (20) प्रभाग द्वारा प्रायोजना की लागत का आकलन प्रशासकीय/वित्तीय अनुमोदन तथा बजट आवंटन के उद्देश्य से किया गया है। प्रभाग का मत है कि प्रायोजना पर सक्षम स्तर से तकनीकी स्वीकृति प्राप्त होने के पश्चात ही निर्माण प्रारम्भ कराया जाए।
- (21) प्रभाग द्वारा प्रस्ताव का परीक्षण लागत आगणन में प्रस्तावित विशिष्टियाँ एवं कार्य प्रावधानों को यथावत मानते हुए किया गया है जिसमें कोई उल्लेखनीय परिवर्तन जैसे-नये कार्य बढ़ाना, एवं अन्य उच्च विशिष्टिया, इस्तेमाल करना इत्यादि, व्यय वित्त समिति का पूर्व अनुमोदन प्राप्त किए बिना नहीं किया जाएगा। इसके अतिरिक्त समिति द्वारा अनुमोदित कार्यों की तकनीकी स्वीकृति निर्गत करने के पूर्व विस्तृत डिजाइन/ ड्राइंग बनाते समय प्रायोजना लागत में यदि 10 प्रतिशत से अधिक वृद्धि होती है तो इस स्थिति में पुनरीक्षित प्रायोजना प्रस्ताव पर प्रशासकीय विभाग द्वारा 03 माह के अन्दर समिति का पुनः अनुमोदन प्राप्त किया जाना अनिवार्य होगा अन्यथा बाद में पुनरीक्षित प्रायोजना लागत के प्रस्ताव पर विचार नहीं किया जाएगा। विभाग द्वारा इस आशय का उल्लेख सम्बन्धित स्वीकृति आदेश में सम्मिलित किया जायेगा।
- (22) विभाग द्वारा वन विभाग के निम्नलिखित अभिमत/परामर्श का अनुपालन सुनिश्चित किया जायेगा:-
- (क) प्रश्नगत परियोजना में अवस्थित वन भूमि के गैर वानिकी प्रयोग हेतु वन (संरक्षण) अधिनियम, 1980 के अन्तर्गत भारत सरकार से पूर्वानुमति की आवश्यकता होगी।

1- यह शासनादेश इलेक्ट्रानिकली जारी किया गया है, अतः इस पर हस्ताक्षर की आवश्यकता नहीं है।

2- इस शासनादेश की प्रमाणिकता वेब साइट <http://shasanadesh.up.nic.in> से सत्यापित की जा सकती है।

--4--

- (ख) यदि यह भूमि वन्य जीव विहार/राष्ट्रीय पार्क में अवस्थित पायी जाती है तो राष्ट्रीय वन्य जीव बोर्ड, नई दिल्ली के साथ-साथ मा० सर्वोच्च न्यायालय की अनुमति प्राप्त करनी होगी।
- (ग) इसके अतिरिक्त यदि प्रश्नगत क्षेत्र वन्य जीव विहार/ राष्ट्रीय पार्क की सीमा से 10 किमी० के अन्तर्गत अवस्थित है, तब राष्ट्रीय वन्य जीव बोर्ड, नई दिल्ली से भी अनुमति की आवश्यकता होगी।
- (घ) गैर वन भूमि/कृषि भूमि पर अवस्थित वृक्षों के पातन हेतु वृक्ष (संरक्षण) अधिनियम, 1976 के अन्तर्गत प्रभागीय वनाधिकारी से पातन की अनुमति प्राप्त करनी होगी।
- (23) पर्यावरण के अभिमत के अनुसार कार्यदायी विभाग/संस्था द्वारा सुसंगत वित्तीय एवं प्रशासकीय नियमों का तथा परियोजनाओं के क्रियान्वयन के सम्बन्ध में संगत पर्यावरणीय नियमों/अधिनियमों के अन्तर्गत वांछित पर्यावरणीय स्वीकृति प्राप्त कर लिये जाने तथा पर्यावरणीय नियमों एवं मा० न्यायालयों /न्यायाधिकरणों द्वारा समय-समय पर निर्गत आदेशों का समुचित अनुपालन सुनिश्चित किया जायेगा।
- (24) विभाग द्वारा पुनः पुनरीक्षित परियोजना के वित्त पोषण के सम्बन्ध में तत्काल नियमानुसार अग्रेतर कार्यवाही सुनिश्चित की जायेगी।

3- यह आदेश वित्त (व्यय नियंत्रण) अनुभाग-8 के अशासकीय संख्या-यू०ओ०-ई-8-1738 /दस-2017, दिनांक 21 दिसम्बर, 2017 में प्राप्त उनकी सहमति से जारी किए जा रहे हैं।

भवदीय

मुश्ताक अहमद  
संयुक्त सचिव।

**संख्या-177/2017/4106(1)/17-27-सिं-9-49एसएवी/08टीसी तद् दिनांक**

**प्रतिलिपि निम्नलिखित को सूचनार्थ एवं आवश्यक कार्यवाही हेतु प्रेषित :-**

- (1) प्रमुख अभियन्ता(परियोजना), सिंचाई एवं जल संसाधन विभाग, उ०प्र०, लखनऊ।
- (2) वित्त नियंत्रक, सिंचाई विभाग, उ०प्र०, लखनऊ।
- (3) मुख्य अभियन्ता(बजट), सिंचाई विभाग, उ०प्र०, लखनऊ।
- (4) वित्त (व्यय नियंत्रण) अनुभाग-8/वित्त (आय-व्ययक) अनुभाग-1।
- (5) गार्ड बुक।

आज्ञा से,

मुश्ताक अहमद  
संयुक्त सचिव।

Computation of Central Assistance		
Name of the project : Saryu Nahar Pariyojana (National Project)		
1	Approved cost of project on inclusion of project under NP in December 2012 (A)	3011.5384
2	Present latest estimated cost of NP components of the project [B]	5803.6130
3	Eligible cost of project to be funded through CA as on 01.04.2012 (allowing 20% escalation on approved cost as on 01.04.2012) [C]	3613.8461
4	Expenditure as on 01.04.2012 (D)	0.0000
5	Balance cost to be provided CA as on 01.04.2012 [E=C-D]	3613.8461
6	Eligible CA as on 01.04.2012 [F=E*funding factor for CA as applicable as on 01.04.2012 i.e. 0.9]	3252.4615
7	Unutilized CA as on 01.4.2012, if any (F1)	0
8	CA released between 01.04.2012 to 31.03.2013 (F2)	67.98
9	Balance CA to be provided after 01.04.2013 as per earlier funding pattern [F3=F-F1-F2]	3184.4815
10	Unspent CA as on 01.4.2013 (F4)	60.4265
11	Balance CA to be provided after 01.04.2013 as per revised funding pattern [F5= F3*New factor (as on 01.4.2013)/old factor (as on 01.4.2012)-{F4-F4*New factor/Old factor}]	3184.4815
12	CA released between 01.04.2013 to 31.03.2015 (G)	591.605
13	Balance CA to be provided after 01.04.2015 as per earlier funding pattern [H=F5-G]	2592.8765
14	Unspent CA as on 01.4.2015 (H1)	0
15	Balance CA to be provided after 01.04.2015 as per revised funding pattern [I= H (In case funding factor not changed w.e.f. 01.4.2015) OR I=H*New factor (as on 01.4.2015)/old factor (as on 01.4.2013)-{H1-H1*New factor/Old factor}]	1728.5843
16	CA released during 2015-16 (J)	500.000
17	Balance CA to be released as on 01.04.2016 [K** =I-J]	1228.5843
18	CA released during 2016-17 (L)	62.0000
19	Balance CA to be released as on 01.04.2017 [M =K-L]	1166.5843
20	CA released during 2017-18	0.0000
21	CA released during 2018-19	305.00
22	CA released during 2019-20	716.6
23	Balance CA as on 30.09.2020	144.9843

[\*\* CA so calculated would be restricted to balance cost of project (as on 01.4.2016 i.e. B - expenditure till 03/2016) in case balance cost is less than balance CA so calculated (as on 01.04.2016) CA