



बाढ़ नियंत्रण सागर अपरदन रोधी एंवम् अपवाह परियोजनाओं के वित्तीय पहलू

FINANCIAL ASPECTS OF FLOOD CONTROL, ANTI-SEA EROSION AND DRAINAGE PROJECTS



वित्तीय निष्पादन एकक
सूचना प्रणाली संगठन
केन्द्रीय जल आयोग
अप्रैल, 2013

FINANCIAL PERFORMANCE UNIT
INFORMATATION SYSTEM ORGANISATION
CENTRAL WATER COMMISSION
APRIL, 2013

**FINANCIAL ASPECTS OF
FLOOD CONTROL, ANTI-SEA EROSION
AND DRAINAGE PROJECTS**

**INFORMATION SYSTEM ORGANISATION
WATER PLANNING & PROJECTS WING
CENTRAL WATER COMMISSION
NEW DELHI**

APRIL, 2013



**Chairman
Central Water Commission
Ministry of Water Resources
Government of India**

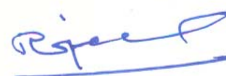
FOREWORD

It gives me great pleasure to present this report on Financial Aspects of Flood Control, Anti Sea Erosion and Drainage Projects. National and State Governments are making concerted efforts continuously since independence for the socio-economic development as well as welfare measures for the people of the country. One such endeavour is execution of a large number of projects in the water sector to protect people and land from the adverse effects of flood, soil erosion and inadequate drainage system. This requires a large public investment which gives importance and significance to a document on financial aspects of the related activities. The publication is intended to serve and provide documentation of available data on Financial Aspects of Flood Control, Anti Sea Erosion and Drainage Projects in the form required by researchers and analysts.

The basic source of the data for the publication is the Finance and Revenue Accounts of the Union Government and State Governments, brought out by the Comptroller and Auditor General of India and Accountant Generals of States respectively. These documents present audited voted figures of expenses and receipts of various activities of States and Central Government.

The collection, collation and compilation of the material for the publication has been done by Information Technology Directorate (Financial Performance Unit) in Information System Organization under the guidance of Shri D.P. Mondal, Adviser (ISO) who had been very instrumental and provided valuable contribution during the course of preparation of the report. I would like to place on record my appreciation to Shri D.P. Mondal, Adviser (ISO) and his team for their commendable efforts in bringing out this publication. I acknowledge the support provided by the officials of the office of Comptroller and Auditor General of India for supply of data.

New Delhi.
April, 2013


(Rajesh Kumar)



PREFACE

A number of projects relating to flood control, soil erosion (by sea or rivers) and creating drainage system are being developed in the country with huge investments for maintaining food security and minimizing loss/damage caused by them. The Financial Performance from investments made in these projects is pertinent for assessment of economic viability vis-à-vis accrued benefits. Such an analysis is also worth for justification of huge public investments being made in the execution of these projects.

While on cost aspects we have fairly accurate audited data but the database on benefit aspects is grossly inadequate. In particular, measurement of accrued indirect benefits creditable to the water resources projects has not received due attention. Further, the data on cost aspects is not available in required details.

The Central Water Commission being the apex nodal agency in the water resources sector with overall responsibility for its development has been paying adequate attention to this aspect. The documentation of the available data is of utility for assessment of levels, trends and interstate variability of expenditure component and correlating it with the physical achievements made over time. The publication is intended to serve and provide documentation of available data in the form required by researchers and analysts.

The basic source of the data for the publication are the Finance and Revenue Accounts of the Union Government and State Governments brought out by the comptroller and Auditor General of India and Accountant Generals of States respectively, which present audited voted figures of expenses and receipts of various activities of States and Central Government. The data on physical progress of the schemes have been collected by Flood Management Directorate of CWC from States and UTs.

The first issue of the publication containing data for the period 1974-75 to 1989-90 had been brought out in 1995 and the second issue of the publication containing data for the period 1990-91 to 1998-99 was brought out in 2002. The present issue (third) contains updated data upto the year 2010-11.

The collection, collation and compilation of the material for the publication has been undertaken by Information Technology Directorate in Information System Organisation. Shri P. S. Tanck, Director, Shri B.S. Madhava Rao, Deputy Director, Shri Siraj Ahmed, Asstt. Director and staff members of IT Directorate have done an excellent job under the guidance of Adviser (ISO) in preparation of this publication and giving it a presentable shape.

Suggestions, if any; are welcome for improvement of the publication.

New Delhi.
April, 2013

(D. P. Mondal)
Advisor(ISO)
Central Water Commission

Officials Associated with the Publication

1. Shri D.P. Mondal
Advisor
2. Shri P. S. Tanck
Director
3. Shri B.S.M. Rao
Deputy Director
4. Shri Siraj Ahmad
Assistant Director
5. Shri N.S. Adhikari
D.E.O. Gr. 'B'
6. Shri Shree Ram Jyotishi
D.E.O. Gr. 'B'

Contents

	Forward	
	Preface	
		Page No.
Chapter 1	Introduction	1
Chapter 2	Financial Performance of Flood Control and Drainage Projects	4
Chapter 3	Physical Performance of Flood Control and Drainage Projects	16
Appendix 1	Detailed Tables	
Table 1	Distribution of revenue expenditure by minor head of accounts and State	24-37
Table 2	Distribution of capital expenditure by minor head of accounts and State	38-52
Table 3	Distribution of total (revenue + capital) expenditure by minor head of accounts and State	53-67
Table 4	The Quantum of Damage due to Floods/Heavy Rains During 1953 to 2011	68-74

Chapter 1

Introduction

A flood may cause innumerable problems such as loss of agricultural produce, water logging, erosion of land, health hazards and loss of human lives. Heavy rain causes flood. Inadequate rain causes drought. In other words, flood occurred when drainage facility is not able to drain out the supply of water due to heavy rain. To meet the challenges posed by the flood, Government of India has taken up a number of projects on flood control, drainage and anti-erosion of land including flood forecasting. The large water reservoirs were developed under Major and Medium Multipurpose projects also help in containing the flood havoc in a big way. However, this publication does not include expenditure incurred on reservoirs although they play an important role in flood control. It focuses on the projects exclusively planned for flood control.

Development of irrigation and related facilities including those related to erosion of land (whether by sea or by inland river water) and protection of crops and agricultural land from floods are very important for food security. A number of projects have been initiated in the country and are in operation to achieve these objectives involving huge investment. A sound financial performance from investments made in these projects is of paramount importance for long-term economic viability and overall sustainability of these projects. The financial analysis assumes particular importance in this context.

Keeping in view the requirements of detailed data needs of planners, researchers and analysts interested in review and analysis of investment in the projects and further in order to present the related financial data for specific projects at one place, the Information System Organisation (ISO) continuously collects, compiles and presents the data on water and related activities in the form of different publications. This publication presents financial aspects of Flood Control and Drainage data on flood control, anti-sea erosion and drainage projects as available in the Finance Accounts of the Union and State Governments brought out by the CAG and Accountant Generals of respective States. These reports provide audited receipts and expenditure of various economic activities of the Central and State Governments. The figures are approved by Comptroller & Auditor General (CAG) of India. As per system of accounts maintained by CAG, the revenue and capital expenditure of all economic activities are classified into 4-digit codes. These codes are known as major head. For Flood Control and Drainage these are 2711 and 4711. The former refers to

revenue expenditure and the later to capital expenditure. Each major head is classified into sub-major head and in turn sub-major head into minor heads. The list of codes along with their descriptions is given below:

Table A: List of accounting codes	
Code	Description
	Major Head
2711	Revenue Expenditure on Flood control and drainage
4711	Capital Expenditure on Flood Control & Drainage
	Sub-Major Head
01	Flood Control
02	Anti-Sea Erosion
03	Drainage
50	Land
80	General
99	Total
	Minor Head
001	Direction & Administration
002	Data Collection
003	Training
004	Research
005	Survey & Investigation
052	Machinery & Equipment
101	Maintenance & Repair
103	Civil work
104	Drainage in industrial Estates
106	Original works
190	Investment in Public Sector & other Undertakings
191	Assistance to local bodies, Corporations, Urban Development Authorities, Town Improvement boards, etc
196	Assistance to Zilla Parishads
198	Assistance to Gram Panchayats
201	Drainage & Flood Control
202	Ujjain Diversion Drain scheme
203	Anti water-Logging Scheme
204	Minor irrigation Scheme
205	jagadhari Tube wells Projects
206	Installation of Tube wells in western Yamuna canal Tract
/*- 9/207	Gurogaon Canal project
208	Drainage project

209	Investigation and Research Scheme
210	Massani Barrage Project
789	Special Component Plan for SC
792	Irrecoverable Loans Written off
796	Tribal area sub Plan
797	Transfer to Reserve funds& Deposit Accounts
799	Suspense
800	Other Expenditure
901	Deduct receipt & Revenue on Capital Account
902	Deduct Amount met from reserve
911	Deduct receipt & Revenue on Capital Account

Some of the above minor heads are project/scheme name. Any expenditure reported against these heads does not pertain to any specific activity under sub-major head of account.

The first issue of this publication containing data for the period 1974-75 to 1989-90 had been brought out in 1995 and the second issue of the publication containing data for the period 1990-91 to 1998-99 was brought out in 2002. The present issue is the third in the series. It contains updated data up to the year 2010-11.

The present publication has three chapters. Chapter 1 gives the background and introduction of the publication. Chapter 2 gives a brief account of financial performance of flood control and drainage projects. The summary of physical performance of flood control and drainage projects has been presented in Chapter 3. The detailed tables on head-wise revenue and capital expenditure have been provided for the years 1998-99 to 2010-11 in Appendix 1.

Chapter 2

Financial Performance of Flood Control and Drainage Projects

Under the major head “flood control and drainage” there are three activities: Flood control, anti-sea erosion and improvement of drainage system. While classifying expenditure under these categories, as may be seen from Table A in Chapter 1, two sub-major heads, namely ‘Land’ and ‘General’ have been added with these three activities. As a result, expenditure on land and some general expenditure have not been classified under any of these three activities. However, during the reference period of this publication, no expenditure was found against the sub-major head “land”. As these activities are geographic location specific all the three activities are not relevant to all the States and UTs of the country. The projects relating to these activities were carried out by State and by Union Government especially in case of Union Territories. Therefore, under the head ‘State’, Union Government has also been included in the tables.

During the period under reference of the present publication i.e. from 1998 to 2011, the erstwhile States of Uttar Pradesh, Bihar and Madhya Pradesh have been divided into six new States, namely, Uttar Pradesh (new) and Uttarakhand, Bihar(new) and Jharkhand and Madhya Pradesh(new) and Chhattisgarh. The separate accounts for these new States have been put into practice with effect from the accounting year 2000-2001. As such the data for the new States Uttarakhand, Jharkhand and Chhattisgarh has been compiled only for the period 2000-2001 to 2008-09. The coverage of data for the new States of Uttar Pradesh, Bihar and Madhya Pradesh is not the same over the whole reference period. It is comparable over the whole reference period if data of the split States are combined.

The breakup of the Working Expenses by different components/projects of expenditure are not generally shown separately in the State Financial Accounts of many States and the expenditure on some of these items are included and shown under “other expenditure”.

As it is a fact that flood control is relevant in flood prone area and anti-sea erosion is relevant in coastal area, developing drainage is warranted in water logged areas. The anti-sea erosion projects are expected to be implemented in coastal areas. However, its **scope has been broadened to include any other type of land erosion** e.g. anti-river erosion.

The projects under the activities of this publication are not spread over all the States and UTs. But, the projects are fairly distributed over the country. Table 1 gives a summary indicating the States where these projects were carried out during 1998-2011. It shows that anti-sea erosion projects were implemented in 12 States, Puducherry and Union Government while drainage and flood control projects were implemented in 17 and 28 States and Union Government respectively.

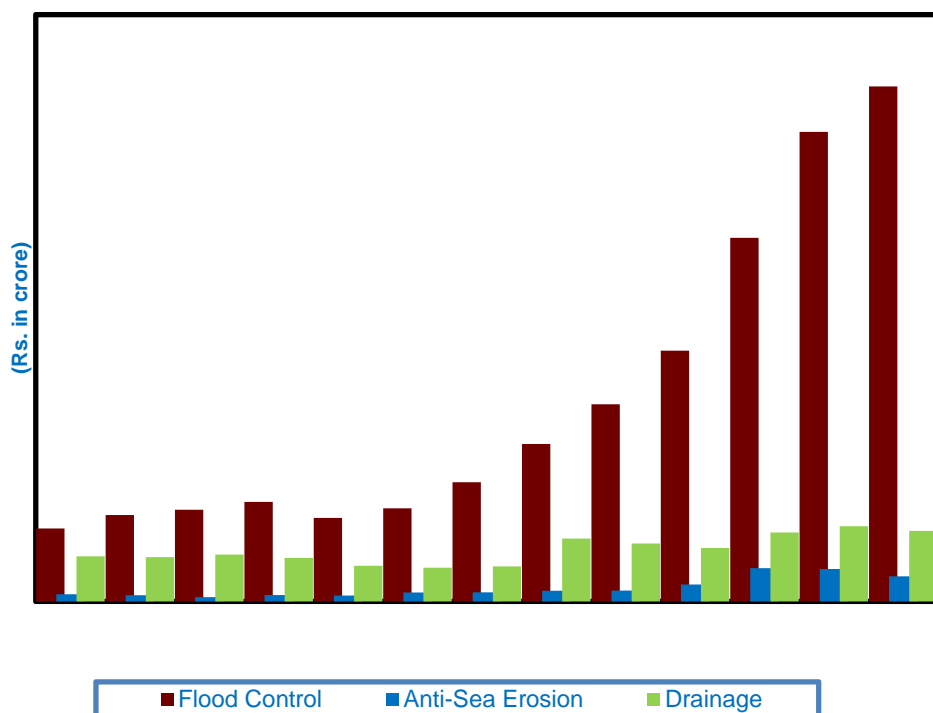
Table 1: States incurring expenditure by type of project during 1998-2010	
Project type	State
Flood control	All States excepting Mizoram and Nagaland
Anti-sea erosion	Delhi, Bihar, Goa, Jammu & Kashmir, Jharkhand, Karnataka, Kerala, Maharashtra, Mizoram and Orissa, Puducherry, Tamil Nadu, West Bengal (12 States+ Puducherry + Union Government)
Drainage	Andhra Pradesh, Arunachal Pradesh, Bihar, Chhattisgarh, Delhi, Goa, Gujarat, Jammu & Kashmir, Maharashtra, Orissa, Puducherry, Punjab, Sikkim, Tamil Nadu, Uttar Pradesh, Uttarakhand, West Bengal (16 States & Puducherry)
None	Nagaland and UTs excepting Puducherry

Table 2 presents yearly expenditure incurred during 1998-2011 by sub-major head of accounts. Here yearly expenditures are inclusive of both capital and revenue expenditure. Its penultimate row gives average yearly expenditure under the sub-major head of accounts during the reference period 1998-2011. And, the last row gives the percentage distribution of expenditure over the sub-major heads during this period. The table reveals that an yearly expenditure of ₹ 1534 crore was spent for flood control, ₹ 105 crore on anti-sea erosion and ₹ 397 crore on drainage projects on an average in the country during 1998-2011. Overall, the expenditure incurred under head 'general' was only about ₹ 22 crore. However, the requirement of these protection measures are not uniform over the States of the country and all are not relevant to all States and UTs. The expenditure levels indicate the relative need / coverage of the type of the projects. The major expenditure is incurred under flood control projects followed by projects on drainage control. The data does not show any perceptible changes in total expenditure till 2004-05. However, it started increasing thereafter. For a quick view of the above data the figures have been presented graphically in Figure 1. A close look of this chart reveals that there is an increasing trend of expenditure for flood control but no such conclusion can be drawn for anti-sea erosion or drainage projects.

Table 2: Yearly expenditure incurred by sub-major head of accounts during 1998-2011					
Year	Minor head of accounts (in crore Rs)				
	Flood	Anti-Sea	Drainage	General (80)	Total

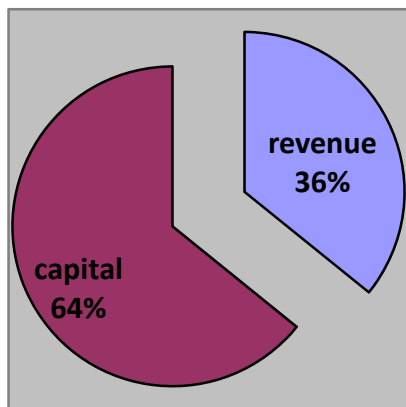
	Control (01)	Erosion (02)	(03)		(99)
(1)	(2)	(3)	(4)	(5)	(6)
1998-99	558.91	54.64	345.66	4.62	963.81
1999-2000	661.94	48.23	340.35	42.09	1092.61
2000-01	703.48	32.57	359.64	126.75	1222.44
2001-02	763.41	49.29	333.48	79.88	1226.06
2002-03	640.78	45.75	274.10	13.71	974.35
2003-04	714.50	68.24	258.91	8.12	1049.77
2004-05	914.03	69.94	268.12	2.01	1254.09
2005-06	1207.03	81.51	481.53	2.11	1772.17
2006-07	1511.99	83.78	444.00	3.05	2042.81
2007-08	1922.93	129.73	409.20	0.52	2462.38
2008-09	2788.85	255.49	528.64	0.41	3573.39
2009-10	3601.25	249.15	576.59		4426.99
2010-11	3948.94	191.97	541.30	0.37	4682.58
Average (over the above years)	1533.70	104.64	397.04	21.82	2057.19
Percentage of expenditure	74.6	5.1	19.3	1.1	100.0

Figure 1: Yearly expenditure incurred by Sub-major haed of accounts



The expenditure given in Table 2 has been split into capital expenditure and revenue expenditure and presented in Tables 3 and 4 respectively. In general capital expenditure is much higher than the corresponding revenue expenditure in a State. These are in about

Figure 2: Ratio of capital and revenue expenditure



64:36 ratio (see Figure 2). Table 3 shows yearly capital expenditure on an average is about ₹ 1027 crore for flood control projects, ₹ 83 crore for anti-sea erosion project and ₹ 202 crore for drainage projects during 1998-99 to 2010-11. Above three-fourths of total expenditure in these projects were incurred for flood control. It also shows that capital expenditure on flood control remained more or less

stable during 2000-2004 at about ₹ 300 crore and thereafter it has started increasing and reached to a level of ₹ 3162 crore in 2010-11. Under anti-sea erosion projects there was an increasing trend of capital expenditure during 2000-2010. However, there was a break point at 2010-11. For drainage projects no trend is exhibited. The trend of total capital expenditure is found to be similar to that of flood control as it constitutes the major share of the total capital expenditure. For flood control schemes, capital expenditure accounts two-thirds of total expenditure while for anti-sea erosion it was only one-sixth of total expenditure and about fifty percent for drainage projects.

Table 3: Yearly capital expenditure incurred by sub-major head of accounts during 1998-2011

Year	Sub-major head of account (in crore Rs)				
	Flood Control (01)	Anti-Sea Erosion (02)	Drainage (03)	General (80)	Total (99)
(1)	(2)	(3)	(4)	(5)	(6)
1998-99	227.76	39.51	168.80		436.06
1999-2000	308.93	26.71	150.55		486.20
2000-01	308.40	20.31	173.32		502.03
2001-02	355.50	29.62	177.42		562.54
2002-03	317.84	35.88	107.75		461.47
2003-04	307.91	54.37	102.08		464.36
2004-05	524.50	57.67	110.84		693.02
2005-06	727.52	62.87	288.38		1078.77
2006-07	976.33	71.80	247.62		1295.75
2007-08	1369.46	107.80	264.38		1741.63
2008-09	2007.18	188.99	313.27		2509.44
2009-10	2760.11	220.26	284.52		3264.89

2010-11	3161.57	160.97	234.41	3556.96
Average (over the above years)	1027.15	82.83	201.80	1311.78
Percentage of expenditure	78.3	6.3	15.4	100.0
Share of capital expenditure out of total expenditure	67.0	79.2	50.8	63.8

Table 4 gives no clear-cut pattern discerned by revenue expenditure incurred under any sub-major head. However, overall there is an increasing trend of revenue expenditure and the level of expenditure has been increased by 113% from 1998-99 to 2010-11. Here, it may be mentioned that the price inflation factor has not been taken into in any of these Tables. All the figures presented are at current prices unless otherwise mentioned. For flood control schemes capital expenditure accounts two-thirds of total expenditure while for anti-sea erosion it was only one-sixth of total expenditure and about fifty percent for drainage projects.

Table 4: Yearly revenue expenditure incurred by sub-major head of accounts during 1998-2011

Year	Minor head of accounts (in crore Rs)				
	Flood Control (01)	Anti-Sea Erosion (02)	Drainage (03)	General (80)	Total (99)
	(2)	(3)	(4)	(5)	(6)
1998-99	331.15	15.13	176.86	4.62	527.76
1999-2000	353.02	21.51	189.79	42.09	606.41
2000-01	395.08	12.25	186.32	126.75	720.41
2001-02	407.91	19.67	156.07	79.88	663.52
2002-03	322.94	9.87	166.36	13.71	512.88
2003-04	406.59	13.87	156.82	8.12	585.40
2004-05	389.53	12.26	157.28	2.01	561.07
2005-06	479.51	18.64	193.15	2.11	693.41
2006-07	535.66	11.98	196.38	3.05	747.06
2007-08	553.47	21.93	144.82	0.52	720.74
2008-09	781.67	66.50	215.37	0.41	1063.95
2009-10	841.14	28.89	292.06	-	1162.09
2010-11	787.37	31.00	306.89	0.37	1125.62
Average (over the above years)	506.54	21.81	195.24	21.82	745.41
Percentage of expenditure	68.0	2.9	26.2	2.9	100.0
% Share of capital expenditure out of total exp	33.0	16.4	49.2	100.0	35.7

Table 5 presents total expenditure – both capital and revenue - incurred during 1998-2011 by sub-major head of accounts over States. It shows that the States, namely, Bihar, Uttar Pradesh, Assam and West Bengal have implemented flood control related projects

considerably higher compared to other States. As regards anti-sea erosion the projects were undertaken mainly in Kerala, Jammu & Kashmir, Maharashtra, Tamil Nadu, Delhi and Karnataka also executed these projects.

Table 5: Distribution of expenditure by sub-major head of accounts and State during 1998-2011

State	Sub-major head of accounts (in crore Rs)							
	Flood Control (01)		Anti-Sea Erosion (02)		Drainage (03)		Total (99)	
	Expd	%	Expd	%	Expd	%	Expd	%
(1)	(2)	(3)	(4)	(5)	(6)	(7)	(8)	(9)
Andhra Pradesh	1088.52	5.46			1320.68	25.59	2409.20	9.01
Arunachal Pradesh	356.53	1.79			1.00	0.02	357.53	1.34
Assam	2226.96	11.17			0.00	0.00	2226.96	8.33
Bihar	4087.33	20.50	0.00	0.00	127.35	2.47	4214.68	15.76
Chhattisgarh	35.87	0.18			29.88	0.58	65.75	0.25
Delhi	199.13	1.00	38.95	2.86	650.72	12.61	888.80	3.32
Goa	132.85	0.67	54.07	3.98	54.53	1.06	241.45	0.90
Gujarat	411.58	2.06			280.43	5.43	692.01	2.59
Haryana	569.52	2.86					569.52	2.13
Himachal Pradesh	355.22	1.78					355.22	1.33
Jammu & Kashmir	735.68	3.69	0.47	0.03	0.31	0.01	736.47	2.75
Jharkhand	29.66	0.15					29.66	0.11
Karnataka	103.39	0.52	90.70	6.67			194.09	0.73
Kerala	239.29	1.20	555.53	40.84			794.82	2.97
Madhya Pradesh	69.05	0.35					69.05	0.26
Maharashtra	108.59	0.54	210.25	15.46	104.05	2.02	422.90	1.58
Manipur	353.83	1.77					362.23	1.35
Meghalaya	42.16	0.21					42.16	0.16
Mizoram	0.00	0.00	17.90	1.32			17.90	0.07
Nagaland								
Orissa	827.89	4.15	97.88	7.20	154.21	2.99	1079.97	4.04
Puducherry	60.39	0.30	6.70	0.49	152.19	2.95	219.28	0.82
Punjab	864.59	4.34			868.45	16.83	1733.04	6.48
Rajasthan	48.38	0.24					48.38	0.18
Sikkim	108.31	0.54			6.14	0.12	118.50	0.44
Tamil Nadu	652.06	3.27	150.87	11.09	14.58	0.28	817.50	3.06
Tripura	179.49	0.90					179.49	0.67
Union Government	1429.30	7.17	115.42	8.49			1544.72	5.78
Uttar Pradesh	2613.87	13.11			420.91	8.15	3034.78	11.35
Uttarakhand	186.69	0.94			0.02	0.00	186.71	0.70

West Bengal	1821.93	9.14	21.52	1.58	976.07	18.91	3090.68	11.56
Total	19938.04	100.00	1360.26	100.00	5161.51	100.00	26743.44	100.00

Expd : expenditure

Table 6 presents capital expenditure incurred during 1998-2011 by sub-major head of accounts over States. It shows that the States, namely, Bihar, Uttar Pradesh, West Bengal Assam and Andhra Pradesh have implemented flood control related projects considerably higher compared to other States. The States Mizoram and Nagaland and UTs have not taken up any such project.

Table 6: Distribution of capital expenditure by sub-major head of accounts and State during 1998-2011

State	Sub-major head of accounts (in crore Rs)							
	Flood Control (01)		Anti-Sea Erosion (02)		Drainage (03)		Total ^s (99)	
	Expd	%	Expd	%	Expd	%	Expd	%
(1)	(2)	(3)	(4)	(5)	(6)	(7)	(8)	(9)
Andhra Pradesh	1072.64	8.03			373.54	14.24	1446.18	8.48
Arunachal Pradesh	245.87	1.84			1.00	0.04	246.87	1.45
Assam	1216.49	9.11					1216.49	7.13
Bihar	3144.43	23.55	0.00	0.00	3.53	0.13	3147.96	18.46
Chhattisgarh	20.48	0.15					20.48	0.12
Delhi	31.24	0.23			338.78	12.91	370.02	2.17
Goa	105.41	0.79	47.09	4.37	47.28	1.80	199.77	1.17
Gujarat	267.44	2.00			219.30	8.36	486.73	2.85
Haryana	569.52	4.27					569.52	3.34
Himachal Pradesh	347.14	2.60					347.14	2.04
Jammu & Kashmir	332.67	2.49	0.47	0.04	0.08	0.00	333.22	1.95
Jharkhand	25.46	0.19					25.46	0.15
Karnataka	101.97	0.76	86.74	8.06			188.70	1.11
Kerala	104.79	0.78	450.67	41.85			555.46	3.26
Madhya Pradesh	69.05	0.52					69.05	0.40
Maharashtra	91.10	0.68	210.24	19.53	17.29	0.66	318.63	1.87
Manipur	254.46	1.91					254.46	1.49
Meghalaya	35.28	0.26					35.28	0.21
Mizoram	0.00	0.00	17.90	1.66			17.90	0.10
Nagaland								
Orissa	299.77	2.24	15.21	1.41	129.33	4.93	444.31	2.61
Puducherry	50.10	0.38	6.70	0.62	137.70	5.25	194.50	1.14
Punjab	278.35	2.08			716.75	27.32	995.10	5.84
Rajasthan	48.38	0.36					48.38	0.28

Sikkim	18.36	0.14			6.14	0.23	24.50	0.14
Tamil Nadu	570.43	4.27	150.87	14.01	-0.01	0.00	721.29	4.23
Tripura	103.33	0.77					103.33	0.61
Union Government	59.69	0.45	69.34	6.44			129.03	0.76
Uttar Pradesh	2251.59	16.86			323.71	12.34	2575.29	15.10
Uttaranchal	162.01	1.21					162.01	0.95
West Bengal	1475.59	11.05	21.52	2.00	308.94	11.78	1806.06	10.59
Total	13353.01	100.00	1076.76	100.00	2623.34	100.00	17053.11	100.00

\$ It includes ₹283.63 crore under sub-major head 80: general

Table 7 presents revenue expenditure incurred during 1998-2011 by sub-major head of accounts over States. It shows that the States, namely, Assam, Bihar, Punjab and Orissa and Union Government have implemented flood control related projects considerably higher compared to other States. For anti-sea erosion, the revenue expenditure was considerable only in Kerala, Orissa, Delhi and Union Government. For drainage projects the only States made considerable expenditure were Andhra Pradesh, West Bengal and Delhi.

Table 7: Distribution of revenue expenditure by sub-major head of accounts and State during 1998-2011

State	Sub-major head of accounts (in crore Rs)							
	Flood Control (01)		Anti-Sea Erosion (02)		Drainage (03)		Total (99)	
	Expd	%	Expd	%	Expd	%	Expd	%
(1)	(2)	(3)	(4)	(5)	(6)	(7)	(8)	(9)
Andhra Pradesh	15.88	0.24			947.14	37.32	963.03	9.94
Arunachal Pradesh	110.67	1.68					110.67	1.14
Assam	1010.47	15.35			0.00	0.00	1010.47	10.43
Bihar	942.90	14.32			123.82	4.88	1066.72	11.01
Chhattisgarh	15.39	0.23			29.88	1.18	45.27	0.47
Delhi	167.88	2.55	38.95	13.74	311.94	12.29	518.78	5.35
Goa	27.44	0.42	6.99	2.46	7.25	0.29	41.68	0.43
Gujarat	144.14	2.19			61.13	2.41	205.27	2.12
Haryana								
Himachal Pradesh	8.09	0.12					8.09	0.08
Jammu & Kashmir	403.02	6.12			0.24	0.01	403.26	4.16
Jharkhand	4.20	0.06					4.20	0.04
Karnataka	1.43	0.02	3.96	1.40			5.39	0.06
Kerala	134.50	2.04	104.86	36.99			239.36	2.47
Madhya Pradesh								
Maharashtra	17.49	0.27	0.01	0.00	86.77	3.42	104.27	1.08

Manipur	99.36	1.51					107.77	1.11
Meghalaya	6.88	0.10					6.88	0.07
Mizoram	0.00	0.00						
Nagaland								
Orissa	528.11	8.02	82.66	29.16	24.88	0.98	635.66	6.56
Puducherry	10.29	0.16			14.49	0.57	24.78	0.26
Punjab	586.24	8.90			151.70	5.98	737.94	7.62
Rajasthan								
Sikkim	89.94	1.37					94.00	0.97
Tamil Nadu	81.63	1.24			14.59	0.57	96.22	0.99
Tripura	76.16	1.16					76.16	0.79
Union Government	1369.60	20.80	46.08	16.25			1415.68	14.61
Uttar Pradesh	362.28	5.50			97.20	3.83	459.48	4.74
Uttaranchal	24.68	0.37			0.02	0.00	24.70	0.25
West Bengal	346.33	5.26			667.12	26.28	1284.62	13.26
Total	6585.03	100.00	283.50	100.00	2538.17	100.00	9690.33	100.00

The detailed tables (Table A1 - A3¹) have been presented in Appendix Tables.

Table 8 presents the break-up of expenditure incurred during 1998-2011 by minor head of accounts. Here, it may be mentioned that there are 32 minor heads for which some expenditure has been recorded by CAG under the major heads 2711 or 4711. Out of 32, total expenditure under only 13 minor heads of accounts was ₹1 crore or more. These minor heads of accounts have been presented separately in this table. The remaining heads have been merged. However, only three heads are significant. Interestingly, about one-half of the total expenditure has been reported against training. And, the rest is almost fifty-fifty among “direction & administration” and “other expenditure”. Here minor head “other expenditure” means the expenditure which has not been classified under one of the activities / minor heads listed in the table. Besides these three minor heads, no other minor had constituted significant part of the total expenditure. Only plant and machinery comprise about 2% of total expenditure. The expenditure on minor heads “special component plan for SC” and “Tribal area sub Plan” together constitutes about 2.5% of the total expenditure during 1998-2011.

¹ In these tables Union Government has been shown separately States. It corresponds to the projects directly spent by Union Government especially for UTs.

Table 8: Break up of expenditure by minor head of accounts during last 13 years from 1998- 2011

Minor head of accounts		Revenue expenditure		Capital expenditure		Total expenditure [§]	
		Value (Rs crore)	%	Value (Rs crore)	%	Value (Rs crore)	%
(1)		(2)	(3)	(4)	(5)	(6)	(7)
001	Direction & Administration	3150.64	32.5	2469.99	14.5	5620.63	21.0
005	Survey & Investigation	3.73	-	-	-	3.73	-
052	Machinery & Equipment	531.49	5.5	25.95	0.2	557.44	2.1
103	Training	2895.03	29.9	10440.39	61.2	13335.42	49.9
190	Investment in Public Sector & other Undertakings	-	-	51.11	0.3	51.11	0.2
191	Assistance to local bodies	8.43	0.1	-	-	8.43	-
198	Assistance to Gram Panchayats	1.12	0.0	-	-	1.12	-
201	Drainage & Flood Control	-	-	504.01	3.0	504.01	1.9
203	Anti water-Logging Scheme	-	-	20.10	0.1	20.10	0.1
789	Special Component Plan for SC	5.60	0.1	439.14	2.6	444.75	1.7
796	Tribal area sub Plan	0.45	0.0	218.50	1.3	218.96	0.8
799	Suspense	3.98	0.0	122.34	0.7	126.31	0.5
800	Other Expenditure	3108.95	32.1	2785.33	16.3	5894.28	22.0
-	Miscellaneous ²	-19.09	-0.2	-23.76	-0.1	-42.85	-0.2
	Total	9690.33	100.0	17053.11	100.0	26743.44	100.0

[§] It includes ₹283.63 crore under sub-major head 80: general

Although expenditure on the projects under “special component plan for Scheduled Caste (SC)” and “Tribal area sub Plan” is not very high it would be worth to see the correlation between population size and expenditure incurred during 1998-2011. The figures are presented in Table 9. It shows the number of years during the reference period 1998-2011 that a State has implemented flood control and drainage projects under Tribal Area Sub-plan or Special Component Plan for Schedule Caste. It reveals that the States accounting 76% ST and 77% SC did not spent any money under these two minor heads. The only States incurring significant expenditure were: West Bengal, Orissa and Himachal Pradesh for special component plan for SC and West Bengal, Jharkhand and Himachal Pradesh for Tribal Area Sub-plan.

² It does not correspond to a specific minor head of account. It is aggregate of all the minor head accounts excepting those have been listed above in the table.

Table 9: Total expenditure during 1998-2011 under schemes for social groups and their population

State	Population ³ (in lakh)		Total expenditure during 1998-2011 (Rs in crore)		Number of years out of 13 years (1998-2011)	
	Scheduled Tribe	Scheduled Caste	Tribal area sub plan	Special Component Plan for Schedule Caste	Tribal area sub-Plan	Special Component Plan for SC
(1)	(2)	(3)	(4)	(5)	(6)	(7)
Goa	0.01	0.23	8.13	3.10	4	4
Himachal Pradesh	2.44	15.02	30.83	49.34	13	4
Jharkhand	70.87	31.89	43.36	0.30	8	1
Odisha	84.45	60.82	15.61	97.92	2	4
Uttarakhand	2.56	15.17	4.39		3	0
West Bengal	44.06	184.52	113.47	280.78	5	5
Union Government	-	-	3.17	-	3	0
Puducherry		1.57	-	13.14	0	7
Punjab	-	70.28	-	0.16	0	1
Other States	631.41	1286.26	-	-	0	0
Total	835.80	1665.76	218.96	444.75	38	26

In the CAG's report cumulative capital expenditure since beginning by head of accounts is given. Accordingly, the capital expenditure till March 2011 incurred by sub-major head of account has been presented in Table 10. In percentage terms Bihar has the maximum share of total capital expenditure – 17% - followed by West Bengal (13%), Andhra Pradesh (10%), Punjab (9%), Assam (9%) and Uttar Pradesh (8%). Share of any other State was 4% or less.

Table 10: Distribution of cumulative capital expenditure by sub-major head of accounts and State up to 31 March 2011

State	Sub-major head of accounts (in crore Rs)							
	Flood Control (01)		Anti-Sea Erosion (02)		Drainage (03)		Total*(99)	
	Expd	%	Expd	%	Expd	%	Expd	%
(10)	(11)	(12)	(13)	(14)	(15)	(16)	(17)	(18)
Andhra Pradesh	5657.17	6.2	0.00	0.0	7320.47	22.0	12977.64	9.8
Arunachal Pradesh	1027.09	1.1	61.63	0.7	5.18	0.0	1093.90	0.8
Assam	12072.26	13.3	0.00	0.0	0.00	0.0	12072.26	9.1
Bihar	21635.38	23.9	0.00	0.0	367.29	1.1	22002.67	16.6
Chhattisgarh	61.88	0.1	0.00	0.0	0.00	0.0	61.88	0.0
Delhi	306.17	0.3	0.00	0.0	4286.03	12.9	4592.20	3.5
Goa	390.76	0.4	168.76	1.9	200.34	0.6	662.16	0.5
Gujarat	1071.25	1.2	0.00	0.0	2422.99	7.3	3494.24	2.6
Haryana	5208.09	5.8	0.00	0.0	0.00	0.0	5208.09	3.9
Himachal Pradesh	1511.49	1.7	0.00	0.0	12.10	0.0	1523.59	1.2

³ Source: Population Census 2001

Jammu & Kashmir	3213.19	3.5	94.64	1.1	0.50	0.0	3308.33	2.5
Jharkhand	43.32	0.0	0.00	0.0	0.00	0.0	43.32	0.0
Karnataka	867.59	1.0	1120.59	12.8	0.00	0.0	1988.18	1.5
Kerala	1211.41	1.3	4203.93	48.1	0.00	0.0	5415.35	4.1
Madhya Pradesh	291.00	0.3	0.00	0.0	0.00	0.0	291.00	0.2
Maharashtra	470.29	0.5	874.30	10.0	220.89	0.7	1565.47	1.2
Manipur	1238.29	1.4	0.00	0.0	0.00	0.0	1264.57	1.0
Meghalaya	456.76	0.5	0.00	0.0	0.00	0.0	456.76	0.3
Mizoram	0.00	0.0	65.24	0.7	0.00	0.0	65.24	0.0
Orissa	3270.34	3.6	152.83	1.7	649.56	2.0	4072.73	3.1
Puducherry	372.67	0.4	76.40	0.9	791.69	2.4	1240.76	0.9
Punjab	3380.82	3.7	0.00	0.0	8787.47	26.5	12168.28	9.2
Rajasthan	2021.56	2.2	0.00	0.0	0.00	0.0	2021.56	1.5
Sikkim	70.95	0.1	0.00	0.0	19.96	0.1	90.91	0.1
Tamil Nadu	1676.41	1.9	1052.21	12.0	90.96	0.3	2819.58	2.1
Tripura	1097.67	1.2	0.00	0.0	0.00	0.0	1097.67	0.8
Union Government	618.32	0.7	690.04	7.9	466.55	1.4	1774.91	1.3
Uttar Pradesh	9514.46	10.5	0.00	0.0	1643.57	4.9	11158.03	8.4
Uttarakhand	757.90	0.8	0.00	0.0	13.74	0.0	771.64	0.6
West Bengal	11004.44	12.2	184.39	2.1	5922.52	17.8	17111.35	12.9
Total					33221.8			
	90518.94	100.0	8744.94	100.0	0	100.0	132414.26	100.0

Expd : expenditure since beginning of the projects under study

*Total does not match due to adjustment and other expenditure.

As regards flood control, being major component of the total expenditure, the expenditure pattern of States was similar to their total expenditure. The table revealed that Bihar spent maximum capital expenditure amounting 24% of total expenditure on flood control followed by Assam (13%), West Bengal (12%), Uttar Pradesh (10%) and Andhra Pradesh (6%). For anti-sea erosion projects, 48% of the total capital expenditure incurred since start was in Kerala. Other States spending considerable amount were Maharashtra, Tamil Nadu and Karnataka. For drainage projects, cumulative capital expenditure is maximum in Punjab (26%) followed by Andhra Pradesh (22%), West Bengal (18%) and Delhi (13%). To summarise, the list of States incurring significant cumulative capital expenditure since start has been shown by type of project in Table 11.

Table 11: List of States incurred major expenditure by type of project			
Flood Control	1. Anti-Sea Erosion	Drainage	Total
Bihar, Uttar Pradesh, West Bengal, Assam	Kerala, Maharashtra, Tamil Nadu, Karnataka	Punjab, Andhra Pradesh, West Bengal, Delhi	Bihar, Uttar Pradesh, West Bengal, Andhra Pradesh, Assam, Punjab

Chapter 3

Physical Performance of Flood Control and Drainage Projects

Floods are water related disasters, which the life on earth has to encounter from time to time. Water management, in a broad sense, includes management of this disaster to mitigate the misery of humans, animals and infrastructure & property. Floods continue to plague many parts of the country which are faced almost every year in varying magnitudes. After the unprecedented floods of 1954, the Government of India took several initiatives and constituted number of committees to suggest a suitable Flood Management strategy to be followed to reduce the impact of devastating floods. Providing absolute protection instantly to all flood prone areas is neither practically possible nor economically viable. Such an attempt would involve stupendously high cost of construction and maintenance besides time to implement the schemes. Hence a practical approach is to provide a reasonable degree of protection against floods damage at economic cost through a combination of structural measures, non-structural measures and catchment area treatment.

Flood management activities can be broadly classified into four major groups

- Attempt to modify the floods
- Attempt to modify the susceptibility to flood damage
- Attempts to modify the loss burden and
- Bearing of loss.

All these measures for flood management can be classified under structural measures and non-structural measures. Broadly speaking all physical measures like modifying the flood are classified as structural measures while all other measures are defined as non-structural measures.

The general approach about flood management has been in the form of physical measure to prevent the flood water from reaching potential damage centres. The main thrust of the flood protection programme undertaken in India, so far has been of structural measures like (i) Embankment, flood walls (ii) Dams and reservoirs (iii) Natural detention basin (iv) Channel improvement (v) Drainage improvement and (vi) Diversion of Flood water.

Table A4 in Appendix 1 presents the extent of damage in terms of monetary value as well as physical assets including loss of cattle and human lives at all-India level. The summary of the findings based on this table is presented in the following paragraphs.

Table 12 presents the extent of damage due to flood or heavy rain during a span of 58 years from 1953 to 2011. On an average 32 million persons get affected due to flood in a year. The maximum population affected in a year was 70 million and it occurred in 1978. Similar trend was found for area affected by flood. Its yearly average was 7.21 Mha while the maximum 70.45 Mha attained during the same reference period in 1978. As regards affected average crop area, it was 3.78 Mha. Its maximum was 12.30 Mha occurred in 2005. The average number of houses damaged in a year due to flood was 1255 while average number of cattle lost was 966 and of human lives, 17. Total damage in a year on crop, houses and public utilities was estimated to be ₹ 3609 crore.

Table 12: The extent of damage due to flood or heavy rain during 1953 -2011			
			All-India
Item	Average	Maximum	Year in which maximum attained
Population affected (Million)	32.42	70.45	1978
Area affected (Mha)	7.21	17.50	1978
Crop area damaged (Mha)	3.78	12.30	2005
No. of houses damaged (000)	1255	3508	1978
No. of cattle lost (00)	966	618	1979
No. of human lives lost (00)	17	113	1977
Average value of damaged houses (Rs crore)	565	10810	2009
Average value of damaged crop (Rs crore)	1118	7298	2003
Average damage of public utilities (Rs crore)	1867	17504	2009
Total damage (Rs crore)	3609	32541	2009

Figure 3 depicts the area affected by flood in India during 1953 to 2011. The chart shows ups and downs over the years. The maximum damage was observed in 1978 and 1988 while the minimum loss was experienced in 2006 and 1965. In the chart a trend line has also been fitted. It shows there is a marginal declining trend of flood affected areas over the years from 1953 to 2011.

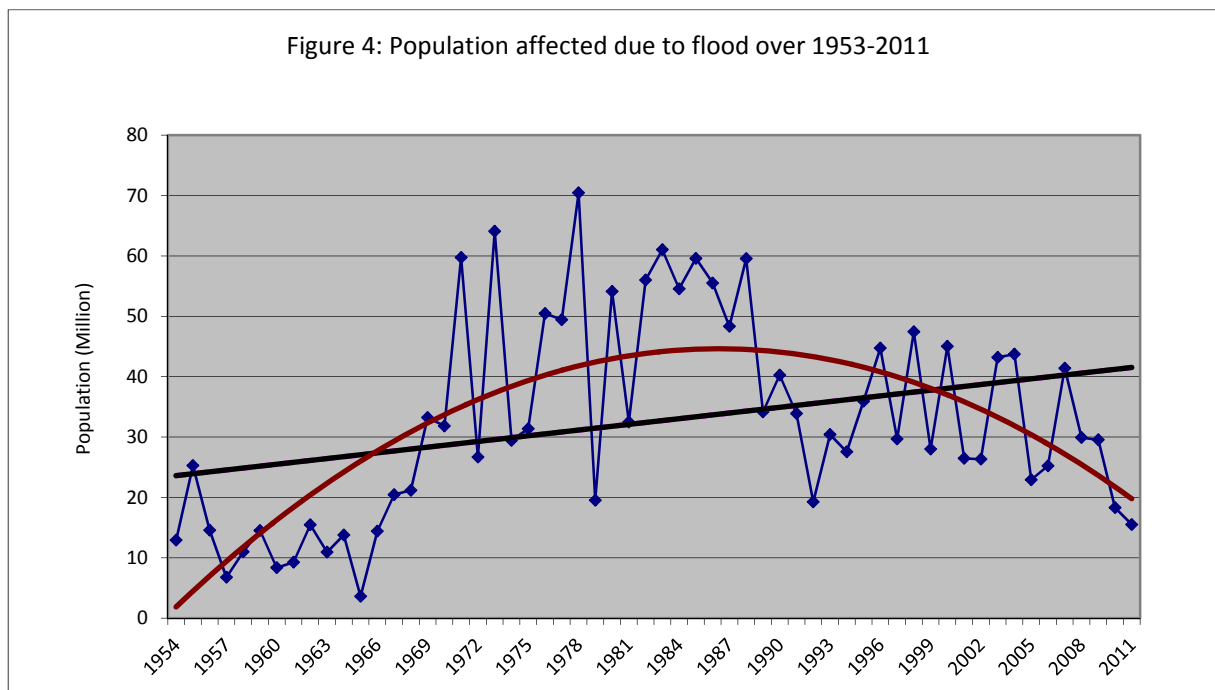
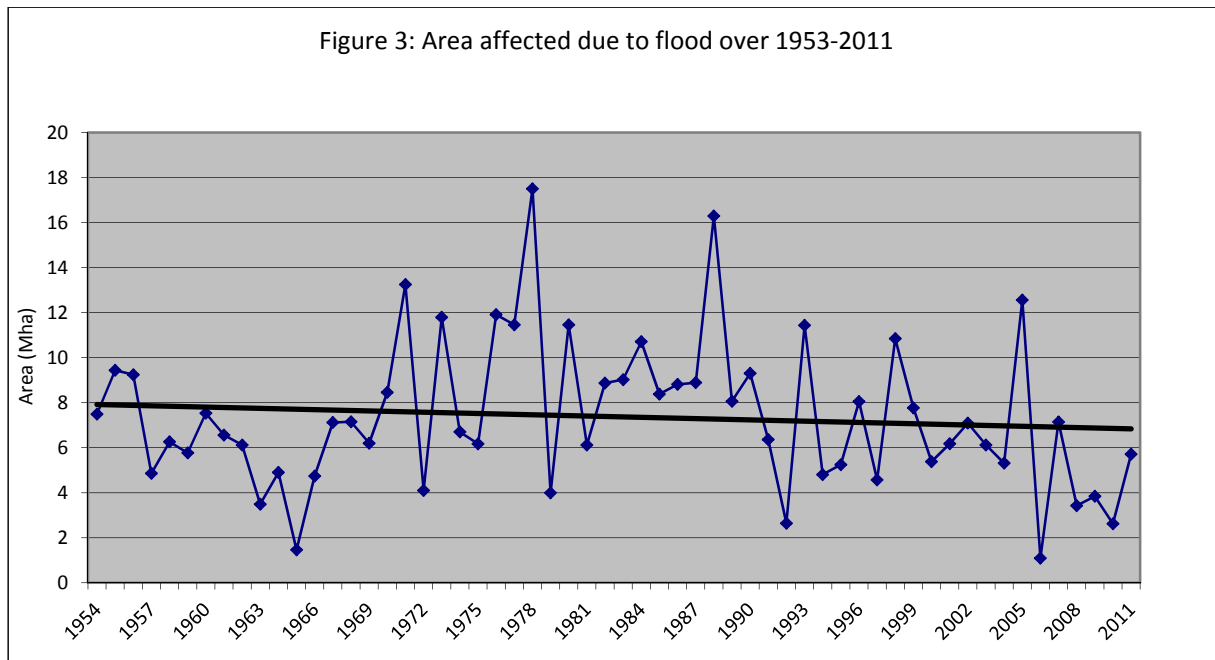


Figure 4 presents the population affected by flood in India during 1953 to 2011. The chart shows the effect is fluctuating. The population affected was the highest in 1978 while it was the lowest in 1965. A trend line fitted in the chart shows there is a slow increasing trend of population affected over the years from 1953 to 2011. In spite of undertaking extensive flood control measures the size of affected population has increased during the period. However, population growth during that period was much faster. The slope⁴ of trend line of population figures is 8.6 while for affected population is only 0.3. Population growth is consistent over time as $R^2 = 0.87$ while affected population has almost no correlation ($R^2 =$

⁴ If linear equation is $y = mx + c$, m is its slope.

0.09)⁵ with time. It implies that relation between affected population and time is not linear. By fitting polynomial trend line it gives a concave downward curve. It shows that the affected population increased till mid-eighties and thereafter started falling. Based on this chart one may like to conclude that the extent of flood control measures could not keep space with the volatility of floods till mid 80s. Thereafter number of persons affected due to flood started declining slowly.

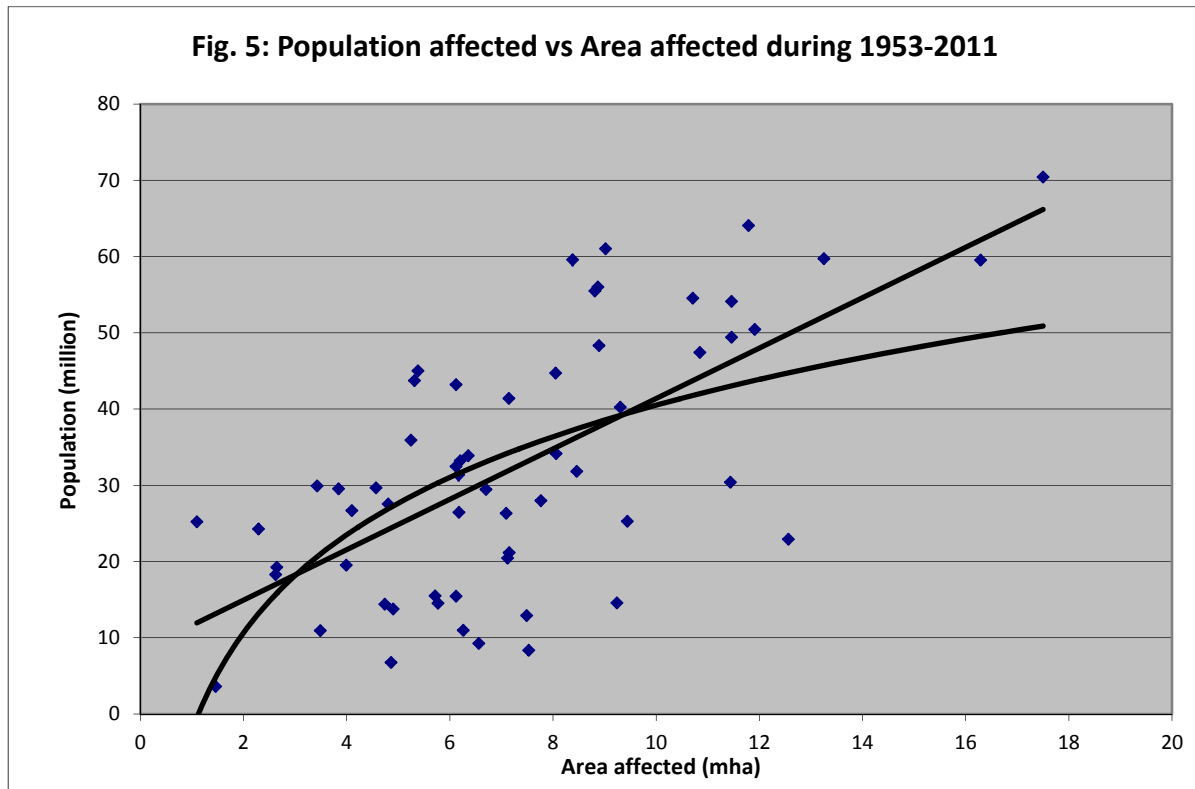


Figure 5 shows scatter diagram of area and population affected due to flood or heavy rain in the country over the period 1953-2011. It is expected that area and population affected due to flood or heavy rain would have a very high positive correlation. In reality, it is positive but not high. It is less than 0.6. It implies the areas affected over the years were different and they had varying population density.

⁵ R = correlation between year (x) and affected population (y)

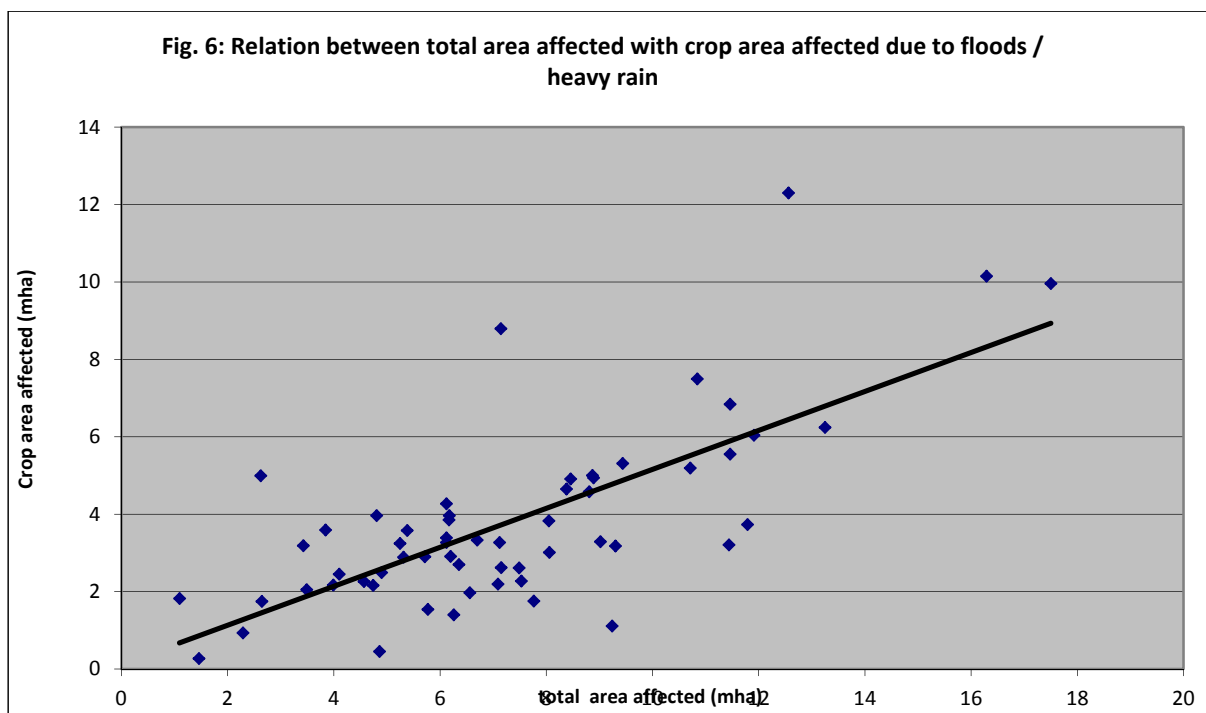


Figure 6 shows a scatter diagram between crop areas affected and total area affected. The pattern of crop damage is somewhat faster than the area affected as evident from the slope of the trend line.

For physical performance in protecting from flood the following indicators are measured:

- (i) Length of Embankment made
- (ii) Length of drainage channels made
- (iii) Number of towns /villages where protection works implemented
- (iv) Number of villages raised/protected against flood and
- (v) Area benefited from flood control projects.

Embankment including ring bunds and protection works confine the flood flows. It is generally designed and constructed to afford a degree of protection against floods of a certain frequency and intensity or against the recorded maximum flood depending upon the location protected and their economic justification. The raising and strengthening of existing embankments have also been taken up in many flood prone States.

Drainage channel improvement is one of the important measures for flood or surface water drainage congestion in some pockets of the country. Under the flood management programme, construction of new channels or improvement in the discharge capacity of the existing drainage system is carried out.

Raising of a village here means making land-fills to keep houses above predetermined flood level even though nearby agricultural roads are liable to inundation and also connecting the village to nearby roads or high roads.

The details of the achievement made through flood control projects have been presented in Table 13. It gives cumulative progress up to 31 March 2011 since start on the activities against the indicators listed above. It shows that Embankment works were carried out in most of the States. However, this work was found to be concentrated in six States, namely, West Bengal, Orissa, Assam, Bihar, Andhra Pradesh and Uttar Pradesh. These 6 States accounted 85% of total embankment of 18.22 Mha made by Government Agencies in the country. The table also shows that the area benefitted was the highest in Punjab followed by Bihar, West Bengal, UP, Assam and Andhra Pradesh. These six States taken together comprises 77% of total embankment works carried out in the country up to March 2011.

As regards construction of drainage channels, the share of Andhra Pradesh, West Bengal, Punjab, Haryana and Uttar Pradesh was significantly higher than other states. In these five States the total length of drainage channel provided was 35964 km out of the total 39710 km in the whole country.

In addition at all-India level protection works against flood were carried out in 7713 villages and 2794 towns.

Table 13: Physical Progress of Flood Management Works under Flood Management Programme till March 2011							
SL. No	Name of State	Area Benefited (Mha)	Length of embankment (km)	Drainage channel (km)	Villages raised (no.)	Towns protected (no.)	Raised Platforms
(1)	(2)	(3)	(4)	(5)	(6)	(7)	(8)
1	Andhra Pradesh	1.311	2230.00	13569.00	23	72	-
2	Arunachal Pradesh	0.10	65.23	16.92	17	30	-
3	Assam	2.11	4467.90	857.79	1100	795	-
4	Bihar	2.95	3610.00	365.00	-	204	58
5	Chhattisgarh	-	-	-	-	-	-
6	Delhi	0.08	83.00	453.00	-	-	-
7	Goa	-	23.19	32.77	-	2	-
8	Gujarat	0.48	104.12	271.00	30	805	-
9	Haryana	2.00	1144.00	4385.00	98	448	7
10	Himachal Pradesh	0.02	159.16	11.00	82	-	-
11	Jammu & Kashmir	0.22	560.68	324.00	1301	22	
12	Jarkhand	-	14.00	-	5	2	
13	Karnataka	0.01	73.52	10.00	-	30	
14	Kerala	0.35	205.74	82.19	6	4	
15	Madhya Pradesh	-	26.00	-	-	37	
16	Maharastra	-	44.50	110.00	-	-	-

17	Manipur	0.13	577.00	166.00	512	38	
18	Meghalaya	0.02	112.00	-	10	8	-
19	Mizoram	-	-	-	-	38	-
20	Nagaland	0.63	10.52	-	-	8	-
21	Orissa	0.63	7137.75	650.00	14	29	-
22	Punjab	3.19	1370.00	6622.00	-	3	-
23	Rajasthan	0.08	145.00	197.00	-	25	-
24	Sikkim	0.04	101.81	64.86	-	18	-
25	Tamilnadu	0.12	87.00	19.00	4	46	-
26	Tripura	0.03	141.74	95.23	-	11	-
27	U.P	1.70	2097.00	3995.00	4511	65	-
28	Uttarakhand	-	9.00	-	-	6	-
29	West Bengal	2.57	10539.00	7392.76	-	48	-
30	A&N Islands	-	-	-	-	-	-
31	Chandigarh	-	-	-	-	-	-
32	D & N Haveli	-	-	-	-	-	-
33	Daman & Diu	-	-	-	-	-	-
34	Lakshadweep	-	-	-	-	-	-
35	Pondicherry	-	61.00	20.00	-	-	
	Total	18.76	35199.86	39709.52	7713	2794	65
*The above details have been updated upto 31.3.2011 as per the information received from the States							
Source: Central Water Commission (FM & DP Directorate)							

Appendix 1

Table 1: Distribution of revenue expenditure by sub-major head of accounts and State

Year	State	Sub-major head of accounts (in lakh Rs)				
		Flood Control (01)	Anti-Sea Erosion (02)	Drainage (03)	General (80)	Total (99)
(1)	(2)	(3)	(4)	(5)	(6)	(7)
1998-99	Andhra Pradesh	136.47		5466.91		5603.38
	Arunachal Pradesh					
	Assam	5603.37				5603.37
	Bihar	3862.44		772.54		4634.98
	Delhi	633.40		1657.63		2291.03
	Goa	35.52	9.50			45.02
	Gujarat	756.19		453.62		1209.81
	Haryana					
	Himachal Pradesh	121.57				121.57
	Jammu & Kashmir	2185.75				2185.75
	Karnataka		33.77			33.77
	Kerala	1114.67	993.08			2107.75
	Madhya Pradesh					
	Maharashtra	3.11	.63	505.65		509.39
	Manipur	573.55				573.55
	Meghalaya	38.64				38.64
	Mizoram					
	Nagaland					
	Orissa	1639.34	217.94			1857.28
	Puducherry	40.79		91.05		131.84
	Punjab	3105.55		4492.28		7597.83
	Rajasthan					
	Sikkim				406.00	406.00
	Tamil Nadu	157.37		80.50		237.87
	Tripura	119.13				119.13
	Union Government	5619.93	258.02			5877.95
	Uttar Pradesh	5369.05		344.53		5713.58
	West Bengal	1999.11		3821.47	55.52	5876.10
	Total	33114.95	1512.94	17686.18	461.52	52775.59

Table 1: Distribution of revenue expenditure by sub-major head of accounts and State

Year	State	Sub-major head of accounts (in lakh Rs)				
		Flood Control (01)	Anti-Sea Erosion (02)	Drainage (03)	General (80)	Total (99)
(1)	(2)	(3)	(4)	(5)	(6)	(7)
1999-2000	Andhra Pradesh	40.24		6193.96		6234.20
	Arunachal Pradesh					
	Assam	7098.45				7098.45
	Bihar	4663.49		774.50		5437.99
	Delhi	695.19		1854.24		2549.43
	Goa	92.52	14.23			106.75
	Gujarat	689.22		463.64		1152.86
	Haryana					
	Himachal Pradesh	105.18				105.18
	Jammu & Kashmir	2224.51				2224.51
	Karnataka		14.53			14.53
	Kerala	1563.33	1424.50			2987.83
	Madhya Pradesh					
	Maharashtra			874.79	.02	874.81
	Manipur	951.79				951.79
	Meghalaya	33.38				33.38
	Orissa	1983.33	332.08			2315.41
	Puducherry	50.86		161.40		212.26
	Punjab	2690.37		3848.66		6539.03
	Rajasthan					
	Sikkim	358.01				358.01
	Tamil Nadu	171.42				171.42
	Tripura	137.09				137.09
	Union Government	7588.44	365.88			7954.32
	Uttar Pradesh	2388.16		562.95	.00	2951.11
	West Bengal	1776.58		4245.12	4209.29	10230.99
	Total	35301.56	2151.22	18979.26	4209.31	60641.35

Table 1: Distribution of revenue expenditure by sub-major head of accounts and State

Year	State	Sub-major head of accounts (in lakh Rs)				
		Flood Control (01)	Anti-Sea Erosion (02)	Drainage (03)	General (80)	Total (99)
(1)	(2)	(3)	(4)	(5)	(6)	(7)
2000-01	Andhra Pradesh	193.32		6828.08		7021.40
	Arunachal Pradesh	1765.00				1765.00
	Assam	6698.58				6698.58
	Bihar	4901.79		213.23		5115.02
	Chhattisgarh					
	Delhi	764.24		2283.58		3047.82
	Goa	93.87	16.23			110.10
	Gujarat	444.77		287.05		731.82
	Haryana					
	Himachal Pradesh	122.53				122.53
	Jammu & Kashmir	2492.51				2492.51
	Jharkhand					
	Karnataka		16.39			16.39
	Kerala	1188.94	601.43			1790.37
	Madhya Pradesh					
	Maharashtra			802.90		802.90
	Manipur	834.08				834.08
	Meghalaya	34.97				34.97
	Orissa	1784.79	266.26			2051.05
	Puducherry	19.10		86.34		105.44
	Punjab	1102.88		3404.90		4507.78
	Rajasthan					
	Sikkim	1147.98				1147.98
	Tamil Nadu	118.59		80.45		199.04
	Tripura	441.44				441.44
	Union Government	11108.66	325.16			11433.82
	Uttar Pradesh	1938.46		442.15	.00	2380.61
	Uttaranchal	24.25		1.90	.00	26.15
	West Bengal	2287.62		4201.41	12675.09	19164.12
	Total	39508.37	1225.47	18631.99	12675.09	72040.92

Table 1: Distribution of revenue expenditure by sub-major head of accounts and State

Year	State	Sub-major head of accounts (in lakh Rs)				
		Flood Control (01)	Anti-Sea Erosion (02)	Drainage (03)	General (80)	Total (99)
(1)	(2)	(3)	(4)	(5)	(6)	(7)
2001-02	Andhra Pradesh	165.11		6971.90		7137.01
	Arunachal Pradesh	999.99				999.99
	Assam	7002.34				7002.34
	Bihar	4024.84		744.30		4769.14
	Chhattisgarh					
	Delhi	824.58		2226.86		3051.44
	Goa	31.45	3.22			34.67
	Gujarat	215.55		73.27		288.82
	Haryana					
	Himachal Pradesh	3.68				3.68
	Jammu & Kashmir	2433.82				2433.82
	Jharkhand					
	Karnataka		49.80			49.80
	Kerala	709.35	1053.77			1763.12
	Madhya Pradesh					
	Maharashtra	553.77				553.77
	Manipur	722.85			.12	722.97
	Meghalaya	36.95				36.95
	Orissa	1940.39	311.01			2251.40
	Puducherry	13.00		35.03		48.03
	Punjab	4093.07		650.08		4743.15
	Rajasthan					
	Sikkim	918.04				918.04
	Tamil Nadu	171.39		80.39		251.78
	Tripura	817.38				817.38
	Union Government	11274.56	549.08			11823.64
	Uttar Pradesh	1719.11		604.90		2324.01
	Uttaranchal	148.81				148.81
	West Bengal	1970.48		4219.90	7987.67	14178.05
	Total	40790.51	1966.88	15606.63	7987.79	66351.81

Table 1: Distribution of revenue expenditure by sub-major head of accounts and State

Year	State	Sub-major head of accounts (in lakh Rs)				
		Flood Control (01)	Anti-Sea Erosion (02)	Drainage (03)	General (80)	Total (99)
(1)	(2)	(3)	(4)	(5)	(6)	(7)
2002-03	Andhra Pradesh	136.01		7051.11		7187.12
	Arunachal Pradesh	1999.98				1999.98
	Assam	6622.15				6622.15
	Bihar	4876.19				4876.19
	Chhattisgarh					
	Delhi	1132.34		2244.74		3377.08
	Goa	21.38	1.66	2.32		25.36
	Gujarat	241.22		93.39		334.61
	Haryana					
	Himachal Pradesh	-16.39				-16.39
	Jammu & Kashmir	2652.70				2652.70
	Jharkhand					
	Karnataka	48.45				48.45
	Kerala	444.67	663.81			1108.48
	Madhya Pradesh					
	Maharashtra	464.98				464.98
	Manipur	474.76			151.82	626.58
	Meghalaya	45.73				45.73
	Orissa	1790.80	322.01			2112.81
	Puducherry	115.00		179.25		294.25
	Punjab	4209.12		2284.31		6493.43
	Rajasthan					
	Sikkim	1420.46				1420.46
	Tamil Nadu	179.02		80.39		259.41
	Tripura	658.04				658.04
	Union Government	377.82				377.82
	Uttar Pradesh	2789.40		687.95		3477.35
	Uttaranchal	201.47				201.47
	West Bengal	1408.69		4012.17	1219.14	6640.00
	Total	32293.99	987.48	16635.63	1370.96	51288.06

Table 1: Distribution of revenue expenditure by sub-major head of accounts and State

Year	State	Sub-major head of accounts (in lakh Rs)				
		Flood Control (01)	Anti-Sea Erosion (02)	Drainage (03)	General (80)	Total (99)
(1)	(2)	(3)	(4)	(5)	(6)	(7)
2003-04	Andhra Pradesh	63.02		7097.76		7160.78
	Arunachal Pradesh	1754.32				1754.32
	Assam	7494.62				7494.62
	Bihar	3996.70		767.91		4764.61
	Chhattisgarh					
	Delhi	1275.25		2260.18		3535.43
	Goa	36.80	5.32	4.54		46.66
	Gujarat	203.87		107.46		311.33
	Haryana					
	Himachal Pradesh					
	Jammu & Kashmir	2769.74		19.20		2788.94
	Jharkhand					
	Karnataka		48.78			48.78
	Kerala	847.99	742.86			1590.85
	Madhya Pradesh					
	Maharashtra			581.63		581.63
	Manipur	534.91			146.78	681.69
	Meghalaya	46.79				46.79
	Orissa	1478.54	255.86			1734.40
	Puducherry	17.07		112.23		129.30
	Punjab	4267.67		484.67		4752.34
	Rajasthan					
	Sikkim	894.49				894.49
	Tamil Nadu	205.35		80.40		285.75
	Tripura	489.11				489.11
	Union Government	10156.80	333.98			10490.78
	Uttar Pradesh	2521.32		460.28		2981.60
	Uttaranchal	293.94				293.94
	West Bengal	1310.86		3706.08	665.17	5682.11
	Total	40659.16	1386.80	15682.34	811.95	58540.25

Table 1: Distribution of revenue expenditure by sub-major head of accounts and State

Year	State	Sub-major head of accounts (in lakh Rs)				
		Flood Control (01)	Anti-Sea Erosion (02)	Drainage (03)	General (80)	Total (99)
(1)	(2)	(3)	(4)	(5)	(6)	(7)
2004-05	Andhra Pradesh	100.09		7290.34		7390.43
	Arunachal Pradesh	699.14				699.14
	Assam	8323.08				8323.08
	Bihar	4648.51				4648.51
	Chhattisgarh					
	Delhi	1392.21		2376.20		3768.41
	Goa	50.24	10.29	3.90		64.43
	Gujarat	258.26		233.26		491.52
	Haryana					
	Himachal Pradesh	28.37				28.37
	Jammu & Kashmir	2929.63		.30		2929.93
	Karnataka	48.06				48.06
	Kerala	547.92	497.10			1045.02
	Madhya Pradesh					
	Maharashtra	727.31				727.31
	Manipur	538.24			112.36	650.60
	Meghalaya	50.22				50.22
	Mizoram					
	Nagaland					
	Orissa	2102.94	364.16			2467.10
	Puducherry	47.40		109.57		156.97
	Punjab	4157.32		4.96		4162.28
	Rajasthan					
	Sikkim	216.21				216.21
	Tamil Nadu	281.45		158.28		439.73
	Tripura	557.45				557.45
	Union Government	6332.33	354.75			6687.08
	Uttar Pradesh	2690.81		1011.26		3702.07
	Uttaranchal	289.81				289.81
	West Bengal	1935.76		4539.67	88.20	6563.63
	Total	38952.76	1226.30	15727.74	200.56	56107.36

Table 1: Distribution of revenue expenditure by sub-major head of accounts and State

Year	State	Sub-major head of accounts (in lakh Rs)				
		Flood Control (01)	Anti-Sea Erosion (02)	Drainage (03)	General (80)	Total (99)
(1)	(2)	(3)	(4)	(5)	(6)	(7)
2005-06	Andhra Pradesh	180.71		7483.85		7664.56
	Arunachal Pradesh					
	Assam	8074.08		.00		8074.08
	Bihar	4860.95		829.73		5690.68
	Chhattisgarh	1538.79		2988.34		4527.13
	Delhi					
	Goa	79.94	16.62	8.41		104.97
	Gujarat	177.58		150.40		327.98
	Haryana					
	Himachal Pradesh	28.64				28.64
	Jammu & Kashmir	3281.41				3281.41
	Karnataka		48.95			48.95
	Kerala	979.34	848.60			1827.94
	Madhya Pradesh					
	Maharashtra			1382.26		1382.26
	Manipur	749.62			149.84	899.46
	Meghalaya	64.10				64.10
	Mizoram					
	Nagaland					
	Orissa	3118.31	531.71	89.33		3739.35
	Puducherry	54.75		143.55		198.30
	Punjab	4489.03				4489.03
	Rajasthan					
	Sikkim	283.76				283.76
	Tamil Nadu	419.86		495.58		915.44
	Tripura	653.59				653.59
	Union Government	12382.73	418.00			12800.73
	Uttar Pradesh	2703.56		746.37		3449.93
	Uttaranchal	290.78				290.78
	West Bengal	3539.39		4997.42	60.92	8597.73
	Total	47950.92	1863.88	19315.24	210.76	69340.80

Table 1: Distribution of revenue expenditure by sub-major head of accounts and State

Year	State	Sub-major head of accounts (in lakh Rs)				
		Flood Control (01)	Anti-Sea Erosion (02)	Drainage (03)	General (80)	Total (99)
(1)	(2)	(3)	(4)	(5)	(6)	(7)
2006-07	Andhra Pradesh	119.36		7365.38		7484.74
	Arunachal Pradesh	1534.65				1534.65
	Assam	9929.35				9929.35
	Bihar	4905.18		892.04		5797.22
	Delhi	1454.35		2701.94		4156.29
	Goa	221.65	47.83	35.45		304.93
	Gujarat	390.04		767.29		1157.33
	Haryana					
	Himachal Pradesh	47.06				47.06
	Jammu & Kashmir	3290.95		4.30		3295.25
	Karnataka		59.43			59.43
	Kerala	257.57	282.31			539.88
	Madhya Pradesh					
	Maharashtra			745.36		745.36
	Manipur	546.40			279.38	825.78
	Meghalaya	54.75				54.75
	Mizoram					
	Nagaland					
	Orissa	4061.51	572.63	204.44		4838.58
	Puducherry	104.53		156.96		261.49
	Punjab	4790.23				4790.23
	Rajasthan					
	Sikkim	777.96				777.96
	Tamil Nadu	209.88		80.51		290.39
	Tripura	771.23				771.23
	Union Government	13284.34	235.42			13519.76
	Uttar Pradesh	2749.78		632.04		3381.82
	Uttaranchal	276.80				276.80
	West Bengal	3788.12		6052.46	25.40	9865.98
	Total	53565.69	1197.62	19638.17	304.78	74706.26

Table 1: Distribution of revenue expenditure by sub-major head of accounts and State

Year	State	Sub-major head of accounts (in lakh Rs)				
		Flood Control (01)	Anti-Sea Erosion (02)	Drainage (03)	General (80)	Total (99)
(1)	(2)	(3)	(4)	(5)	(6)	(7)
2007-08	Andhra Pradesh	251.00		1841.20		2092.20
	Arunachal Pradesh	698.36				698.36
	Assam	10826.87				10826.87
	Bihar	6455.90		964.10		7420.00
	Chhattisgarh					
	Delhi	1504.96		2827.72		4332.68
	Goa	283.87	57.18	74.33		415.38
	Gujarat	690.51		235.90		926.41
	Haryana					
	Himachal Pradesh	61.20				61.20
	Jammu & Kashmir	3467.88				3467.88
	Karnataka		39.45			39.45
	Kerala	1028.74	708.08			1736.82
	Madhya Pradesh					
	Maharashtra			920.30		920.30
	Manipur	813.06				813.06
	Meghalaya	64.00				64.00
	Mizoram					
	Nagaland					
	Orissa	6206.69	916.80	283.37		7406.86
	Puducherry	287.00		100.00		387.00
	Punjab	5490.96				5490.96
	Rajasthan					
	Sikkim	614.44				614.44
	Tamil Nadu	533.43		80.51		613.94
	Tripura	654.39				654.39
	Union Government	9631.90	471.68			10103.58
	Uttar Pradesh	2567.98		775.57		3343.55
	Uttaranchal	283.29				283.29
	West Bengal	2930.70		6379.12	51.99	9361.81
	Total	55347.13	2193.19	14482.12	51.99	72074.43

Table 1: Distribution of revenue expenditure by sub-major head of accounts and State

Year	State	Sub-major head of accounts (in lakh Rs)				
		Flood Control (01)	Anti-Sea Erosion (02)	Drainage (03)	General (80)	Total (99)
(1)	(2)	(3)	(4)	(5)	(6)	(7)
2008-09	Andhra Pradesh	61.39		10302.39		10363.78
	Arunachal Pradesh	530.00				530.00
	Assam	10951.58				10951.58
	Bihar	9615.05		1555.97		11171.02
	Delhi	2271.71	3895.19			6166.90
	Goa	203.78	62.77	81.88		348.43
	Gujarat	2922.36		1324.68		4247.04
	Haryana					
	Himachal Pradesh	111.72				111.72
	Jammu & Kashmir	3478.28				3478.28
	Jharkhand	420.45				420.45
	Karnataka		40.85			40.85
	Kerala	1927.75	1116.11			3043.86
	Madhya Pradesh					
	Maharashtra			809.02		809.02
	Manipur	997.48				997.48
	Meghalaya	63.43				63.43
	Mizoram					
	Nagaland					
	Orissa	11197.43	1135.05	397.61		12730.09
	Puducherry	72.05		83.70		155.75
	Punjab	5617.02				5617.02
	Rajasthan					
	Sikkim	1778.96				1778.96
	Tamil Nadu	720.32		80.51		800.83
	Tripura	714.36				714.36
	Union Government	17128.01	399.80			17527.81
	Uttar Pradesh	2809.68		682.72		3492.40
	Uttaranchal	309.02				309.02
	West Bengal	4265.28		6218.36	41.42	10525.06
	Total	78167.11	6649.77	21536.84	41.42	106395.14

Table 1: Distribution of revenue expenditure by sub-major head of accounts and State

Year	State	Sub-major head of accounts (in lakh Rs)				
		Flood Control (01)	Anti-Sea Erosion (02)	Drainage (03)	General (80)	Total (99)
(1)	(2)	(3)	(4)	(5)	(6)	(7)
2009-10	Andhra Pradesh	95.80		9954.91		10050.71
	Arunachal Pradesh	932.23				932.23
	Assam	12422.92				12422.92
	Bihar	18864.90		2426.13		21291.03
	Delhi	2217.76		5478.82		7696.58
	Goa	656.91	254.96	170.02		1081.89
	Gujarat	3352.03		1100.66		4452.69
	Haryana					
	Himachal Pradesh	111.72				111.72
	Jammu & Kashmir	4231.44				4231.44
	Jharkhand					
	Karnataka		43.91			43.91
	Kerala	1363.79	693.78			2057.57
	Madhya Pradesh					
	Maharashtra			1027.41		1027.41
	Manipur	970.70				970.70
	Meghalaya	74.09				74.09
	Mizoram	.00				.00
	Orissa	7492.07	1398.56	467.56		9358.19
	Puducherry	115.00		74.95		189.95
	Punjab	6733.54				6733.54
	Rajasthan					
	Sikkim	355.64				355.64
	Tamil Nadu	1561.28		80.51		1641.79
	Tripura	948.07				948.07
	Union Government	14639.58	497.60			15137.18
	Uttar Pradesh	3017.96		1204.91		4222.87
	Uttaranchal	350.19				350.19
	West Bengal	3606.68		7220.41		10827.09
	Total	84114.30	2888.81	29206.29		116209.40

Table 1: Distribution of revenue expenditure by sub-major head of accounts and State

Year	State	Sub-major head of accounts (in lakh Rs)				
		Flood Control (01)	Anti-Sea Erosion (02)	Drainage (03)	General (80)	Total (99)
(1)	(2)	(3)	(4)	(5)	(6)	(7)
2010-11	Andhra Pradesh	45.93		10866.61		10912.54
	Arunachal Pradesh	153.09				153.09
	Assam	.00		.00		.00
	Bihar	18614.20		2441.33		21055.53
	Delhi	2622.44		5281.98		7904.42
	Goa	936.49	198.81	344.36		1479.66
	Gujarat	4072.61		822.31		4894.92
	Haryana					
	Himachal Pradesh	83.25				83.25
	Jammu & Kashmir	4863.08				4863.08
	Jharkhand					
	Karnataka	46.14	.00			46.14
	Kerala	1475.72	860.39			2336.11
	Madhya Pradesh					
	Maharashtra			1027.41		1027.41
	Manipur	1229.05				1229.05
	Meghalaya	80.92				80.92
	Mizoram					
	Orissa	8015.30	1642.29	1045.99		10703.58
	Puducherry	92.00		115.00		207.00
	Punjab	7877.03				7877.03
	Rajasthan					
	Sikkim	228.48				228.48
	Tamil Nadu	3433.67		80.51		3514.18
	Tripura	654.44				654.44
	Union Government	17435.39	398.42			17833.81
	Uttar Pradesh	2963.12		1564.47		4527.59
	Uttaranchal	.00				.00
	West Bengal	3814.22		7098.56	36.81	10949.59
	Total	78736.57	3099.91	30688.53	36.81	112561.82

Table 1: Distribution of revenue expenditure by sub-major head of accounts and State

Year	State	Sub-major head of accounts (in lakh Rs)				
		Flood Control (01)	Anti-Sea Erosion (02)	Drainage (03)	General (80)	Total (99)
(1)	(2)	(3)	(4)	(5)	(6)	(7)
Total	Andhra Pradesh	1588.45		94714.40		96302.85
(1998-2011)	Arunachal Pradesh	11066.76				11066.76
	Assam	101047.39		.00		101047.39
	Bihar	94290.14		12381.78		106671.92
	Chhattisgarh	1538.79		2988.34	.00	4527.13
	Delhi	16788.43	3895.19	31193.89		51877.51
	Goa	2744.42	698.62	725.21		4168.25
	Gujarat	14414.21		6112.93		20527.14
	Haryana					
	Himachal Pradesh	808.53				808.53
	Jammu & Kashmir	40301.70		23.80		40325.50
	Jharkhand	420.45				420.45
	Karnataka	142.65	395.86			538.51
	Kerala	13449.78	10485.82			23935.60
	Madhya Pradesh					
	Maharashtra	1749.17	.63	8676.73	.02	10426.55
	Manipur	9936.49			840.30	10776.79
	Meghalaya	687.97				687.97
	Mizoram	.00				.00
	Nagaland					
	Orissa	52811.44	8266.36	2488.30		63566.10
	Puducherry	1028.55		1449.03		2477.58
	Punjab	58623.79		15169.86		73793.65
	Rajasthan					
	Sikkim	8994.43			406.00	9400.43
	Tamil Nadu	8163.03		1458.54		9621.57
	Tripura	7615.72				7615.72
	Union Government	136960.49	4607.79			141568.28
	Uttar Pradesh	36228.39		9720.10	.00	45948.49
	Uttaranchal	2468.36		1.90	.00	2470.26
	West Bengal	34633.49		66712.15	27116.62	128462.26
	Total	658503.02	28350.27	253816.96	28362.94	969033.19

Table 2: Distribution of capital expenditure by sub-major head of accounts and State

Year	State	Sub-major head of accounts (in lakh Rs)				
		Flood Control (01)	Anti-Sea Erosion (02)	Drainage (03)	General (80)	Total (99)
(1)	(2)	(3)	(4)	(5)	(6)	(7)
1998-99	Andhra Pradesh	326.32		3428.28		3754.60
	Arunachal Pradesh	432.74				432.74
	Assam	2112.19				2112.19
	Bihar	4302.51				4302.51
	Delhi	147.94		1329.14		1477.08
	Goa	47.33	16.00	47.26		110.59
	Gujarat	311.57		1791.70		2103.27
	Haryana					
	Himachal Pradesh	455.83				455.83
	Jammu & Kashmir	745.72				745.72
	Karnataka	349.10	1067.48			1416.58
	Kerala	703.78	1439.61			2143.39
	Madhya Pradesh	65.70				65.70
	Maharashtra	471.73	138.76	1.64		612.13
	Manipur	227.29				227.29
	Meghalaya	299.18				299.18
	Mizoram					
	Nagaland					
	Orissa	1145.55	74.60	331.59		1551.74
	Puducherry	25.75	101.22	60.15		187.12
	Punjab	1798.93		7092.96		8891.89
	Rajasthan	536.82				536.82
	Sikkim					
	Tamil Nadu	1099.92	543.62	-.14		1643.40
	Tripura	374.32				374.32
	Union Government	543.55	364.26			907.81
	Uttar Pradesh	1305.37		968.80		2274.17
	West Bengal	4946.63	205.04	1828.12		6979.79
	Total	22775.77	3950.59	16879.50		43605.86

Table 2: Distribution of capital expenditure by sub-major head of accounts and State

Year	State	Sub-major head of accounts (in lakh Rs)				
		Flood Control (01)	Anti-Sea Erosion (02)	Drainage (03)	General (80)	Total (99)
(1)	(2)	(3)	(4)	(5)	(6)	(7)
1999-2000	Andhra Pradesh	1227.23		2740.11		3967.34
	Arunachal Pradesh	425.00				425.00
	Assam	4947.49				4947.49
	Bihar	7652.16		301.85		7954.01
	Delhi	149.13		1607.93		1757.06
	Goa	78.81	2.00	36.67		117.48
	Gujarat	178.92		2227.30		2406.22
	Haryana					
	Himachal Pradesh	725.97				725.97
	Jammu & Kashmir	291.26				291.26
	Karnataka	624.74	910.54			1535.28
	Kerala	534.31	758.05			1292.36
	Madhya Pradesh	46.42				46.42
	Maharashtra	293.27	260.88	12.64		566.79
	Manipur	199.66				199.66
	Meghalaya	302.94				302.94
	Orissa	700.95	265.43	215.16		1181.54
	Puducherry	173.99	33.60	260.60		468.19
	Punjab	1393.27		5124.37		6517.64
	Rajasthan	244.69				244.69
	Sikkim					
	Tamil Nadu	699.19	134.83	.21		834.23
	Tripura	692.15				692.15
	Union Government	642.96	158.68			801.64
	Uttar Pradesh	3067.03		864.87		3931.90
	West Bengal	5601.17	147.31	1663.77		7412.25
	Total	30892.71	2671.32	15055.48		48619.51

Table 2: Distribution of capital expenditure by sub-major head of accounts and State

Year	State	Sub-major head of accounts (in lakh Rs)				
		Flood Control (01)	Anti-Sea Erosion (02)	Drainage (03)	General (80)	Total (99)
(1)	(2)	(3)	(4)	(5)	(6)	(7)
2000-01	Andhra Pradesh	3747.84		2426.17		6174.01
	Arunachal Pradesh	404.81				404.81
	Assam	3154.00				3154.00
	Bihar	8236.50		51.42		8287.92
	Chhattisgarh	.87				.87
	Delhi	162.80		1567.87		1730.67
	Goa	28.48	.20	26.57		55.25
	Gujarat	21.81		1329.03		1350.84
	Haryana					
	Himachal Pradesh	749.84				749.84
	Jammu & Kashmir	387.41				387.41
	Jharkhand					
	Karnataka	509.46	450.05			959.51
	Kerala	261.98	569.84			831.82
	Madhya Pradesh	31.51				31.51
	Maharashtra	194.77	408.25	120.35		723.37
	Manipur	44.03				44.03
	Meghalaya	257.99				257.99
	Orissa	179.67	99.35	117.74		396.76
	Puducherry	153.95	17.71	267.68		439.34
	Punjab	1580.42		8514.10		10094.52
	Rajasthan	217.29				217.29
	Sikkim					
	Tamil Nadu	549.50	102.78	-.97		651.31
	Tripura	764.93				764.93
	Union Government	200.05	276.16			476.21
	Uttar Pradesh	3363.43		50.52		3413.95
	Uttaranchal	-2.60				-2.60
	West Bengal	5639.25	106.72	2861.59		8607.56
	Total	30839.99	2031.06	17332.07		50203.12

Table 2: Distribution of capital expenditure by sub-major head of accounts and State

Year	State	Sub-major head of accounts (in lakh Rs)				
		Flood Control (01)	Anti-Sea Erosion (02)	Drainage (03)	General (80)	Total (99)
(1)	(2)	(3)	(4)	(5)	(6)	(7)
2001-02	Andhra Pradesh	6063.52				6063.52
	Arunachal Pradesh	367.98				367.98
	Assam	1757.13				1757.13
	Bihar	8692.95				8692.95
	Chhattisgarh	10.32				10.32
	Delhi	167.18		1596.57		1763.75
	Goa	67.26	29.60	58.15		155.01
	Gujarat	76.02		1183.82		1259.84
	Haryana					
	Himachal Pradesh	744.43				744.43
	Jammu & Kashmir	553.14				553.14
	Jharkhand	148.62				148.62
	Karnataka	617.79	64.93			682.72
	Kerala	394.22	1621.63			2015.85
	Madhya Pradesh	22.00				22.00
	Maharashtra	61.42	345.32	325.08		731.82
	Manipur	32.44				32.44
	Meghalaya	192.96				192.96
	Orissa	308.48	31.20	96.05		435.73
	Puducherry	168.51	23.60	153.78		345.89
	Punjab	3249.64		10091.37		13341.01
	Rajasthan	385.86				385.86
	Sikkim					
	Tamil Nadu	268.58	239.17			507.75
	Tripura	449.27				449.27
	Union Government	306.33	302.35			608.68
	Uttar Pradesh	2191.06		933.34		3124.40
	Uttaranchal	321.34				321.34
	West Bengal	7931.72	304.27	3303.66		11539.65
	Total	35550.17	2962.07	17741.82		56254.06

Table 2: Distribution of capital expenditure by sub-major head of accounts and State

Year	State	Sub-major head of accounts (in lakh Rs)				
		Flood Control (01)	Anti-Sea Erosion (02)	Drainage (03)	General (80)	Total (99)
(1)	(2)	(3)	(4)	(5)	(6)	(7)
2002-03	Andhra Pradesh	4123.28				4123.28
	Arunachal Pradesh	374.12				374.12
	Assam	2152.77				2152.77
	Bihar	8432.85				8432.85
	Chhattisgarh	30.14				30.14
	Delhi	182.50		1761.94		1944.44
	Goa	108.44	75.42	83.54		267.40
	Gujarat	18.37		969.61		987.98
	Haryana	3163.46				3163.46
	Himachal Pradesh	1353.37				1353.37
	Jammu & Kashmir	814.45				814.45
	Jharkhand	22.87				22.87
	Karnataka	311.45	499.36			810.81
	Kerala	318.24	1621.32			1939.56
	Madhya Pradesh	248.66				248.66
	Maharashtra	35.58	235.21	94.16		364.95
	Manipur	68.51				68.51
	Meghalaya	106.41				106.41
	Orissa	273.48	45.54	293.28		612.30
	Puducherry	324.03	1.89	591.94		917.86
	Punjab	253.67		2477.57		2731.24
	Rajasthan	385.96				385.96
	Sikkim					
	Tamil Nadu	156.44	682.68			839.12
	Tripura	417.98				417.98
	Union Government	257.20	379.00			636.20
	Uttar Pradesh	3158.90		1027.21		4186.11
	Uttaranchal	370.17				370.17
	West Bengal	4320.59	47.38	3475.57		7843.54
	Total	31783.89	3587.80	10774.82		46146.51

Table 2: Distribution of capital expenditure by sub-major head of accounts and State

Year	State	Sub-major head of accounts (in lakh Rs)				
		Flood Control (01)	Anti-Sea Erosion (02)	Drainage (03)	General (80)	Total (99)
(1)	(2)	(3)	(4)	(5)	(6)	(7)
2003-04	Andhra Pradesh	742.03		1232.94		1974.97
	Arunachal Pradesh	1648.06				1648.06
	Assam	1493.70				1493.70
	Bihar	8344.64				8344.64
	Chhattisgarh	29.42				29.42
	Delhi	203.83		1559.60		1763.43
	Goa	140.05	146.07	155.37		441.49
	Gujarat	33.01		1032.68		1065.69
	Haryana	3255.76				3255.76
	Himachal Pradesh	1582.52				1582.52
	Jammu & Kashmir	1604.30		1.82		1606.12
	Jharkhand	47.93				47.93
	Karnataka	270.20	441.07			711.27
	Kerala	290.31	2252.26			2542.57
	Madhya Pradesh	95.22				95.22
	Maharashtra	81.29	980.04	30.31		1091.64
	Manipur	420.58				420.58
	Meghalaya	161.51				161.51
	Orissa	74.40	6.78	175.61		256.79
	Puducherry	358.98	12.42	378.18		749.58
	Punjab	195.99		1124.20		1320.19
	Rajasthan	345.95				345.95
	Sikkim	161.44				161.44
	Tamil Nadu	427.57	916.32			1343.89
	Tripura	694.98				694.98
	Union Government	178.19	671.91			850.10
	Uttar Pradesh	4904.56		763.79		5668.35
	Uttaranchal	603.58				603.58
	West Bengal	2401.19	9.93	3753.99		6165.11
	Total	30791.19	5436.80	10208.49		46436.48

Table 2: Distribution of capital expenditure by sub-major head of accounts and State

Year	State	Sub-major head of accounts (in lakh Rs)				
		Flood Control (01)	Anti-Sea Erosion (02)	Drainage (03)	General (80)	Total (99)
(1)	(2)	(3)	(4)	(5)	(6)	(7)
2004-05	Andhra Pradesh	2264.93		1284.86		3549.79
	Arunachal Pradesh	274.99		100.00		374.99
	Assam	4054.84				4054.84
	Bihar	11874.09				11874.09
	Chhattisgarh	15.04				15.04
	Delhi	200.07		1399.94		1600.01
	Goa	124.87	70.05	250.76		445.68
	Gujarat	14.07		739.15		753.22
	Haryana	3982.68				3982.68
	Himachal Pradesh	1422.49				1422.49
	Jammu & Kashmir	1328.57	7.00	4.19		1339.76
	Jharkhand	131.45				131.45
	Karnataka	328.51	422.14			750.65
	Kerala	194.75	2139.34			2334.09
	Madhya Pradesh	475.29				475.29
	Maharashtra	231.70	837.45	91.62		1160.77
	Manipur	687.04				687.04
	Meghalaya	144.76				144.76
	Mizoram					
	Nagaland					
	Orissa	75.78	74.67	353.88		504.33
	Puducherry	737.96	176.26	298.25		1212.47
	Punjab	840.96		2583.06		3424.02
	Rajasthan	985.37				985.37
	Sikkim	195.31		50.00		245.31
	Tamil Nadu	1336.33	1733.20			3069.53
	Tripura	300.84				300.84
	Union Government	572.62	295.91			868.53
	Uttar Pradesh	14412.67		1120.34		15533.01
	Uttaranchal	766.92				766.92
	West Bengal	4475.17	11.46	2807.91		7294.54
	Total	52450.07	5767.48	11083.96		69301.51

Table 2: Distribution of capital expenditure by sub-major head of accounts and State

Year	State	Sub-major head of accounts (in lakh Rs)				
		Flood Control (01)	Anti-Sea Erosion (02)	Drainage (03)	General (80)	Total (99)
(1)	(2)	(3)	(4)	(5)	(6)	(7)
2005-06	Andhra Pradesh	1170.16		3796.92		4967.08
	Arunachal Pradesh	575.00				575.00
	Assam	4809.60				4809.60
	Bihar	14004.47				14004.47
	Chhattisgarh	68.54				68.54
	Delhi	281.82		3871.49		4153.31
	Goa	108.04	98.36	175.51		381.91
	Gujarat	15.33		800.16		815.49
	Haryana	6118.67				6118.67
	Himachal Pradesh	1641.56				1641.56
	Jammu & Kashmir	2016.71	6.01			2022.72
	Jharkhand	211.63				211.63
	Karnataka	545.67	381.13			926.80
	Kerala	280.09	714.15			994.24
	Madhya Pradesh	232.89				232.89
	Maharashtra	151.29	455.68	5.18		612.15
	Manipur	652.29				652.29
	Meghalaya	439.91				439.91
	Mizoram		60.00			60.00
	Nagaland					
	Orissa	444.86	41.76	611.29		1097.91
	Puducherry	660.56	293.62	1723.74		2677.92
	Punjab	2260.24		4601.02		6861.26
	Rajasthan	730.72				730.72
	Sikkim	168.65		22.18		190.83
	Tamil Nadu	1776.32	4125.47			5901.79
	Tripura	773.67				773.67
	Union Government	696.68	90.97			787.65
	Uttar Pradesh	20738.85		9579.47		30318.32
	Uttaranchal	3614.37				3614.37
	West Bengal	7563.72	19.48	3650.78		11233.98
	Total	72752.31	6286.63	28837.74		107876.68

Table 2: Distribution of capital expenditure by sub-major head of accounts and State

Year	State	Sub-major head of accounts (in lakh Rs)				
		Flood Control (01)	Anti-Sea Erosion (02)	Drainage (03)	General (80)	Total (99)
(1)	(2)	(3)	(4)	(5)	(6)	(7)
2006-07	Andhra Pradesh	5210.42		7432.64		12643.06
	Arunachal Pradesh	904.51				904.51
	Assam	12303.66				12303.66
	Bihar	13243.13				13243.13
	Chhattisgarh	174.32				174.32
	Delhi	282.09		1511.85		1793.94
	Goa	453.26	525.34	260.24		1238.84
	Gujarat	189.40		939.69		1129.09
	Haryana	5849.00				5849.00
	Himachal Pradesh	1873.30				1873.30
	Jammu & Kashmir	3492.49	34.28	0.05		3526.82
	Jharkhand	-1559.11				-1559.11
	Karnataka	845.53	1223.28			2068.81
	Kerala	59.77	1142.11			1201.88
	Madhya Pradesh	514.83				514.83
	Maharashtra	1109.51	857.81	31.46		1998.78
	Manipur	1477.21				1477.21
	Meghalaya	248.20				248.20
	Mizoram		351.00			351.00
	Nagaland					
	Orissa	568.20	201.51	1086.04		1855.75
	Puducherry	397.33	9.67	3145.01		3552.01
	Punjab	1983.96		932.55		2916.51
	Rajasthan	309.58				309.58
	Sikkim	158.71		85.46		244.17
	Tamil Nadu	1136.64	2150.30			3286.94
	Tripura	1299.53				1299.53
	Union Government	388.60	684.61			1073.21
	Uttar Pradesh	30865.07		8077.88		38942.95
	Uttaranchal	3788.34				3788.34
	West Bengal	10065.93		1258.78		11324.71
	Total	97633.41	7179.91	24761.65		129574.97

Table 2: Distribution of capital expenditure by sub-major head of accounts and State

Year	State	Sub-major head of accounts (in lakh Rs)				
		Flood Control (01)	Anti-Sea Erosion (02)	Drainage (03)	General (80)	Total (99)
(1)	(2)	(3)	(4)	(5)	(6)	(7)
2007-08	Andhra Pradesh	19711.20		5520.85		25232.05
	Arunachal Pradesh	712.85				712.85
	Assam	9127.85				9127.85
	Bihar	25775.70				25775.70
	Chhattisgarh	418.54				418.54
	Delhi	310.19		2762.64		3072.83
	Goa	709.02	404.98	374.86		1488.86
	Gujarat	8627.90		1663.63		10291.53
	Haryana	6448.76				6448.76
	Himachal Pradesh	2288.62				2288.62
	Jammu & Kashmir	2897.98		1.59		2899.57
	Jharkhand	681.70				681.70
	Karnataka	1471.66	465.09			1936.75
	Kerala	387.70	3789.96			4177.66
	Madhya Pradesh	1629.65				1629.65
	Maharashtra	978.67	1553.23	510.22		3042.12
	Manipur	1091.64				1091.64
	Meghalaya	357.00				357.00
	Mizoram		271.00			271.00
	Nagaland					
	Orissa	2307.72	205.43	3470.93		5984.08
	Puducherry	314.99		2058.00		2372.99
	Punjab	5037.07		4956.68		9993.75
	Rajasthan	178.63				178.63
	Sikkim	116.14		164.43		280.57
	Tamil Nadu	1019.79	2842.58			3862.37
	Tripura	1155.41				1155.41
	Union Government	154.38	933.84			1088.22
	Uttar Pradesh	27120.42		4279.51		31399.93
	Uttaranchal	2357.72				2357.72
	West Bengal	13556.64	313.93	674.21		14544.78
	Total	136945.54	10780.04	26437.55		174163.13

Table 2: Distribution of capital expenditure by sub-major head of accounts and State

Year	State	Sub-major head of accounts (in lakh Rs)				
		Flood Control (01)	Anti-Sea Erosion (02)	Drainage (03)	General (80)	Total (99)
(1)	(2)	(3)	(4)	(5)	(6)	(7)
2008-09	Andhra Pradesh	18193.47		2752.65		20946.12
	Arunachal Pradesh	6527.08				6527.08
	Assam	19540.27				19540.27
	Bihar	57284.16				57284.16
	Chhattisgarh	333.71				333.71
	Delhi	324.36		4167.29		4491.65
	Goa	1582.24	1442.16	542.16		3566.56
	Gujarat	5876.70		1724.21		7600.91
	Haryana	8104.58				8104.58
	Himachal Pradesh	2361.96				2361.96
	Jammu & Kashmir	5764.79				5764.79
	Jharkhand	571.32				571.32
	Karnataka	2414.85	914.04			3328.89
	Kerala	701.41	10384.90			11086.31
	Madhya Pradesh	1264.94				1264.94
	Maharashtra	2059.85	2595.46	80.37		4735.68
	Manipur	6430.09				6430.09
	Meghalaya	538.82				538.82
	Mizoram		1108.19			1108.19
	Nagaland					
	Orissa	4533.19	105.69	2799.15		7438.03
	Puducherry	294.96		1031.95		1326.91
	Punjab	2588.92		12430.85		15019.77
	Rajasthan	162.23				162.23
	Sikkim	406.25		62.06		468.31
	Tamil Nadu	4135.86	995.58			5131.44
	Tripura	922.45				922.45
	Union Government	655.75	1113.71			1769.46
	Uttar Pradesh	33787.07		3737.53		37524.60
	Uttaranchal	1808.51				1808.51
	West Bengal	11548.14	239.19	1998.79		13786.12
	Total	200717.93	18898.92	31327.01		250943.86

Table 2: Distribution of capital expenditure by sub-major head of accounts and State

Year	State	Sub-major head of accounts (in lakh Rs)				
		Flood Control (01)	Anti-Sea Erosion (02)	Drainage (03)	General (80)	Total (99)
(1)	(2)	(3)	(4)	(5)	(6)	(7)
2009-10	Andhra Pradesh	25901.94		3165.06		29067.00
	Arunachal Pradesh	2921.38				2921.38
	Assam	30005.56				30005.56
	Bihar	76309.62				76309.62
	Chhattisgarh	538.70				538.70
	Delhi	364.68		5909.36		6274.04
	Goa	3715.73	1409.87	1534.78		6660.38
	Gujarat	5903.19		3212.39		9115.58
	Haryana	7898.24				7898.24
	Himachal Pradesh	7097.28				7097.28
	Jammu & Kashmir	5047.21				5047.21
	Jharkhand	1132.51				1132.51
	Karnataka	703.91	704.24			1408.15
	Kerala	248.49	14262.77			14511.26
	Madhya Pradesh	689.70				689.70
	Maharashtra	1697.03	4205.37	213.20		6115.60
	Manipur	5534.75				5534.75
	Meghalaya	280.15				280.15
	Mizoram	.00				.00
	Orissa	12433.74				12433.74
	Puducherry	237.94		2898.67		3136.61
	Punjab	5338.27		8674.88		14013.15
	Rajasthan	162.23				162.23
	Sikkim	318.19		11.93		330.12
	Tamil Nadu	16234.68	221.49			16456.17
	Tripura	799.86				799.86
	Union Government	424.89	1098.00			1522.89
	Uttar Pradesh	34994.32		848.07		35842.39
	Uttaranchal	509.66				509.66
	West Bengal	28567.27	124.06	1984.11		30675.44
	Total	276011.12	22025.80	28452.45		326489.37

Table 2: Distribution of capital expenditure by sub-major head of accounts and State

Year	State	Sub-major head of accounts (in lakh Rs)				
		Flood Control (01)	Anti-Sea Erosion (02)	Drainage (03)	General (80)	Total (99)
(1)	(2)	(3)	(4)	(5)	(6)	(7)
2010-11	Andhra Pradesh	18581.53		3573.17		22154.70
	Arunachal Pradesh	9017.99				9017.99
	Assam	26189.84				26189.84
	Bihar	70290.00	.00			70290.00
	Chhattisgarh	428.20				428.20
	Delhi	347.52		4832.53		5180.05
	Goa	3377.12	488.66	1181.66		5047.44
	Gujarat	5477.30		4316.42		9793.72
	Haryana	12131.00				12131.00
	Himachal Pradesh	12416.38				12416.38
	Jammu & Kashmir	8322.63				8322.63
	Jharkhand	1156.72				1156.72
	Karnataka	1203.77	1130.34			2334.11
	Kerala	6103.90	4371.49			10475.39
	Madhya Pradesh	1588.18				1588.18
	Maharashtra	1743.90	8150.83	212.52		10107.25
	Manipur	8580.67				8580.67
	Meghalaya	197.82				197.82
	Mizoram					
	Orissa	6931.19	369.27	3381.99		10682.45
	Puducherry	1161.28		901.79		2063.07
	Punjab	1313.55		3071.53		4385.08
	Rajasthan	192.42				192.42
	Sikkim	311.56		217.53		529.09
	Tamil Nadu	28201.93	398.65			28600.58
	Tripura	1687.88				1687.88
	Union Government	948.20	564.65			1512.85
	Uttar Pradesh	45249.89		119.17		45369.06
	Uttaranchal	2062.80				2062.80
	West Bengal	40941.87	623.55	1633.10		43198.52
	Total	316157.04	16097.44	23441.41		355695.89

Table 2: Distribution of capital expenditure by sub-major head of accounts and State

Year	State	Sub-major head of accounts (in lakh Rs)				
		Flood Control (01)	Anti-Sea Erosion (02)	Drainage (03)	General (80)	Total (99)
(1)	(2)	(3)	(4)	(5)	(6)	(7)
Total	Andhra Pradesh	107263.87		37353.65		144617.52
(1998-2011)	Arunachal Pradesh	24586.51		100.00		24686.51
	Assam	121648.90				121648.90
	Bihar	314442.78	.00	353.27		314796.05
	Chhattisgarh	2047.80				2047.80
	Delhi	3124.11		33878.15		37002.26
	Goa	10540.65	4708.71	4727.53		19976.89
	Gujarat	26743.59		21929.79		48673.38
	Haryana	56952.15				56952.15
	Himachal Pradesh	34713.55				34713.55
	Jammu & Kashmir	33266.66	47.29	7.65		33321.60
	Jharkhand	2545.64				2545.64
	Karnataka	10196.64	8673.69			18870.33
	Kerala	10478.95	45067.43			55546.38
	Madhya Pradesh	6904.99				6904.99
	Maharashtra	9110.01	21024.29	1728.75		31863.05
	Manipur	25446.20				25446.20
	Meghalaya	3527.65				3527.65
	Mizoram	.00	1790.19			1790.19
	Nagaland					
	Orissa	29977.21	1521.23	12932.71		44431.15
	Puducherry	5010.23	669.99	13769.74		19449.96

Table 2: Distribution of capital expenditure by sub-major head of accounts and State

Year	State	Sub-major head of accounts (in lakh Rs)				
		Flood Control (01)	Anti-Sea Erosion (02)	Drainage (03)	General (80)	Total (99)
(1)	(2)	(3)	(4)	(5)	(6)	(7)
Total	Punjab	27834.89		71675.14		99510.03
(1998-2011)	Rajasthan	4837.75				4837.75
	Sikkim	1836.25		613.59		2449.84
	Tamil Nadu	57042.75	15086.67	-.90		72128.52
	Tripura	10333.27				10333.27
	Union Government	5969.40	6934.05			12903.45
	Uttar Pradesh	225158.64		32370.50		257529.14
	Uttaranchal	16200.81				16200.81
	West Bengal	147559.29	2152.32	30894.38		180605.99
	Total	1335301.14	107675.86	262333.95		1705310.95

Table 3: Distribution of total (revenue + capital) expenditure by sub-major head of accounts and State

Year	State	Sub-major head of accounts (in lakh Rs)				
		Flood Control (01)	Anti-Sea Erosion (02)	Drainage (03)	General (80)	Total (99)
(1)	(2)	(3)	(4)	(5)	(6)	(7)
1998-99	Andhra Pradesh	462.79		8895.19		9357.98
	Arunachal Pradesh	432.74				432.74
	Assam	7715.56				7715.56
	Bihar	8164.95		772.54		8937.49
	Delhi	781.34		2986.77		3768.11
	Goa	82.85	25.50	47.26		155.61
	Gujarat	1067.76		2245.32		3313.08
	Haryana					
	Himachal Pradesh	577.40				577.40
	Jammu & Kashmir	2931.47				2931.47
	Karnataka	349.10	1101.25			1450.35
	Kerala	1818.45	2432.69			4251.14
	Madhya Pradesh	65.70				65.70
	Maharashtra	474.84	139.39	507.29		1121.52
	Manipur	800.84				800.84
	Meghalaya	337.82				337.82
	Mizoram					
	Nagaland					
	Orissa	2784.89	292.54	331.59		3409.02
	Puducherry	66.54	101.22	151.20		318.96
	Punjab	4904.48		11585.24		16489.72
	Rajasthan	536.82				536.82
	Sikkim				406.00	406.00
	Tamil Nadu	1257.29	543.62	80.36		1881.27
	Tripura	493.45				493.45
	Union Government	6163.48	622.28			6785.76
	Uttar Pradesh	6674.42		1313.33		7987.75
	West Bengal	6945.74	205.04	5649.59	55.52	12855.89
	Total	55890.72	5463.53	34565.68	461.52	96381.45

Table 3: Distribution of total (revenue + capital) expenditure by sub-major head of accounts and State

Year	State	Sub-major head of accounts (in lakh Rs)				
		Flood Control (01)	Anti-Sea Erosion (02)	Drainage (03)	General (80)	Total (99)
(1)	(2)	(3)	(4)	(5)	(6)	(7)
1999-2000	Andhra Pradesh	1267.47		8934.07		10201.54
	Arunachal Pradesh	425.00				425.00
	Assam	12045.94				12045.94
	Bihar	12315.65		1076.35		13392.00
	Delhi	844.32		3462.17		4306.49
	Goa	171.33	16.23	36.67		224.23
	Gujarat	868.14		2690.94		3559.08
	Haryana					
	Himachal Pradesh	831.15				831.15
	Jammu & Kashmir	2515.77				2515.77
	Karnataka	624.74	925.07			1549.81
	Kerala	2097.64	2182.55			4280.19
	Madhya Pradesh	46.42				46.42
	Maharashtra	293.27	260.88	887.43	.02	1441.60
	Manipur	1151.45				1151.45
	Meghalaya	336.32				336.32
	Orissa	2684.28	597.51	215.16		3496.95
	Puducherry	224.85	33.60	422.00		680.45
	Punjab	4083.64		8973.03		13056.67
	Rajasthan	244.69				244.69
	Sikkim	358.01				358.01
	Tamil Nadu	870.61	134.83	.21		1005.65
	Tripura	829.24				829.24
	Union Government	8231.40	524.56			8755.96
	Uttar Pradesh	5455.19		1427.82	.00	6883.01
	West Bengal	7377.75	147.31	5908.89	4209.29	17643.24
	Total	66194.27	4822.54	34034.74	4209.31	109260.86

Table 3: Distribution of total (revenue + capital) expenditure by sub-major head of accounts and State

Year	State	Sub-major head of accounts (in lakh Rs)				
		Flood Control (01)	Anti-Sea Erosion (02)	Drainage (03)	General (80)	Total (99)
(1)	(2)	(3)	(4)	(5)	(6)	(7)
2000-01	Andhra Pradesh	3941.16		9254.25		13195.41
	Arunachal Pradesh	2169.81				2169.81
	Assam	9852.58				9852.58
	Bihar	13138.29		264.65		13402.94
	Chhattisgarh	.87				.87
	Delhi	927.04		3851.45		4778.49
	Goa	122.35	16.43	26.57		165.35
	Gujarat	466.58		1616.08		2082.66
	Haryana					
	Himachal Pradesh	872.37				872.37
	Jammu & Kashmir	2879.92				2879.92
	Jharkhand					
	Karnataka	509.46	466.44			975.90
	Kerala	1450.92	1171.27			2622.19
	Madhya Pradesh	31.51				31.51
	Maharashtra	194.77	408.25	923.25		1526.27
	Manipur	878.11				878.11
	Meghalaya	292.96				292.96
	Orissa	1964.46	365.61	117.74		2447.81
	Puducherry	173.05	17.71	354.02		544.78
	Punjab	2683.30		11919.00		14602.30
	Rajasthan	217.29				217.29
	Sikkim	1147.98				1147.98
	Tamil Nadu	668.09	102.78	79.48		850.35
	Tripura	1206.37				1206.37
	Union Government	11308.71	601.32			11910.03
	Uttar Pradesh	5301.89		492.67	.00	5794.56
	Uttaranchal	21.65		1.90	.00	23.55
	West Bengal	7926.87	106.72	7063.00	12675.09	27771.68
	Total	70348.36	3256.53	35964.06	12675.09	122244.04

Table 3: Distribution of total (revenue + capital) expenditure by sub-major head of accounts and State

Year	State	Sub-major head of accounts (in lakh Rs)				
		Flood Control (01)	Anti-Sea Erosion (02)	Drainage (03)	General (80)	Total (99)
(1)	(2)	(3)	(4)	(5)	(6)	(7)
2001-02	Andhra Pradesh	6228.63		6971.90		13200.53
	Arunachal Pradesh	1367.97				1367.97
	Assam	8759.47				8759.47
	Bihar	12717.79		744.30		13462.09
	Chhattisgarh	10.32				10.32
	Delhi	991.76		3823.43		4815.19
	Goa	98.71	32.82	58.15		189.68
	Gujarat	291.57		1257.09		1548.66
	Haryana					
	Himachal Pradesh	748.11				748.11
	Jammu & Kashmir	2986.96				2986.96
	Jharkhand	148.62				148.62
	Karnataka	617.79	114.73			732.52
	Kerala	1103.57	2675.40			3778.97
	Madhya Pradesh	22.00				22.00
	Maharashtra	615.19	345.32	325.08		1285.59
	Manipur	755.29			.12	755.41
	Meghalaya	229.91				229.91
	Orissa	2248.87	342.21	96.05		2687.13
	Puducherry	181.51	23.60	188.81		393.92
	Punjab	7342.71		10741.45		18084.16
	Rajasthan	385.86				385.86
	Sikkim	918.04				918.04
	Tamil Nadu	439.97	239.17	80.39		759.53
	Tripura	1266.65				1266.65
	Union Government	11580.89	851.43			12432.32
	Uttar Pradesh	3910.17		1538.24		5448.41
	Uttaranchal	470.15				470.15
	West Bengal	9902.20	304.27	7523.56	7987.67	25717.70
	Total	76340.68	4928.95	33348.45	7987.79	122605.87

Table 3: Distribution of total (revenue + capital) expenditure by sub-major head of accounts and State

Year	State	Sub-major head of accounts (in lakh Rs)				
		Flood Control (01)	Anti-Sea Erosion (02)	Drainage (03)	General (80)	Total (99)
(1)	(2)	(3)	(4)	(5)	(6)	(7)
2002-03	Andhra Pradesh	4259.29		7051.11		11310.40
	Arunachal Pradesh	2374.10				2374.10
	Assam	8774.92				8774.92
	Bihar	13309.04				13309.04
	Chhattisgarh	30.14				30.14
	Delhi	1314.84		4006.68		5321.52
	Goa	129.82	77.08	85.86		292.76
	Gujarat	259.59		1063.00		1322.59
	Haryana	3163.46				3163.46
	Himachal Pradesh	1336.98				1336.98
	Jammu & Kashmir	3467.15				3467.15
	Jharkhand	22.87				22.87
	Karnataka	359.90	499.36			859.26
	Kerala	762.91	2285.13			3048.04
	Madhya Pradesh	248.66				248.66
	Maharashtra	500.56	235.21	94.16		829.93
	Manipur	543.27			151.82	695.09
	Meghalaya	152.14				152.14
	Orissa	2064.28	367.55	293.28		2725.11
	Puducherry	439.03	1.89	771.19		1212.11
	Punjab	4462.79		4761.88		9224.67
	Rajasthan	385.96				385.96
	Sikkim	1420.46				1420.46
	Tamil Nadu	335.46	682.68	80.39		1098.53
	Tripura	1076.02				1076.02
	Union Government	635.02	379.00			1014.02
	Uttar Pradesh	5948.30		1715.16		7663.46
	Uttaranchal	571.64				571.64
	West Bengal	5729.28	47.38	7487.74	1219.14	14483.54
	Total	64077.88	4575.28	27410.45	1370.96	97434.57

Table 3: Distribution of total (revenue + capital) expenditure by sub-major head of accounts and State

Year	State	Sub-major head of accounts (in lakh Rs)				
		Flood Control (01)	Anti-Sea Erosion (02)	Drainage (03)	General (80)	Total (99)
(1)	(2)	(3)	(4)	(5)	(6)	(7)
2003-04	Andhra Pradesh	805.05		8330.70		9135.75
	Arunachal Pradesh	3402.38				3402.38
	Assam	8988.32				8988.32
	Bihar	12341.34		767.91		13109.25
	Chhattisgarh	29.42				29.42
	Delhi	1479.08		3819.78		5298.86
	Goa	176.85	151.39	159.91		488.15
	Gujarat	236.88		1140.14		1377.02
	Haryana	3255.76				3255.76
	Himachal Pradesh	1582.52				1582.52
	Jammu & Kashmir	4374.04		21.02		4395.06
	Jharkhand	47.93				47.93
	Karnataka	270.20	489.85			760.05
	Kerala	1138.30	2995.12			4133.42
	Madhya Pradesh	95.22				95.22
	Maharashtra	81.29	980.04	611.94		1673.27
	Manipur	955.49			146.78	1102.27
	Meghalaya	208.30				208.30
	Orissa	1552.94	262.64	175.61		1991.19
	Puducherry	376.05	12.42	490.41		878.88
	Punjab	4463.66		1608.87		6072.53
	Rajasthan	345.95				345.95
	Sikkim	1055.93				1055.93
	Tamil Nadu	632.92	916.32	80.40		1629.64
	Tripura	1184.09				1184.09
	Union Government	10334.99	1005.89			11340.88
	Uttar Pradesh	7425.88		1224.07		8649.95
	Uttaranchal	897.52				897.52
	West Bengal	3712.05	9.93	7460.07	665.17	11847.22
	Total	71450.35	6823.60	25890.83	811.95	104976.73

Table 3: Distribution of total (revenue + capital) expenditure by sub-major head of accounts and State

Year	State	Sub-major head of accounts (in lakh Rs)				
		Flood Control (01)	Anti-Sea Erosion (02)	Drainage (03)	General (80)	Total (99)
(1)	(2)	(3)	(4)	(5)	(6)	(7)
2004-05	Andhra Pradesh	2365.02		8575.20		10940.22
	Arunachal Pradesh	974.13		100.00		1074.13
	Assam	12377.92				12377.92
	Bihar	16522.60				16522.60
	Chhattisgarh	15.04				15.04
	Delhi	1592.28		3776.14		5368.42
	Goa	175.11	80.34	254.66		510.11
	Gujarat	272.33		972.41		1244.74
	Haryana	3982.68				3982.68
	Himachal Pradesh	1450.86				1450.86
	Jammu & Kashmir	4258.20	7.00	4.49		4269.69
	Jharkhand	131.45				131.45
	Karnataka	376.57	422.14			798.71
	Kerala	742.67	2636.44			3379.11
	Madhya Pradesh	475.29				475.29
	Maharashtra	959.01	837.45	91.62		1888.08
	Manipur	1225.28			112.36	1337.64
	Meghalaya	194.98				194.98
	Mizoram					
	Nagaland					
	Orissa	2178.72	438.83	353.88		2971.43
	Puducherry	785.36	176.26	407.82		1369.44
	Punjab	4998.28		2588.02		7586.30
	Rajasthan	985.37				985.37
	Sikkim	411.52		50.00		461.52
	Tamil Nadu	1617.78	1733.20	158.28		3509.26
	Tripura	858.29				858.29
	Union Government	6904.95	650.66			7555.61
	Uttar Pradesh	17103.48		2131.60		19235.08
	Uttaranchal	1056.73				1056.73
	West Bengal	6410.93	11.46	7347.58	88.20	13858.17
	Total	91402.83	6993.78	26811.70	200.56	125408.87

Table 3: Distribution of total (revenue + capital) expenditure by sub-major head of accounts and State

Year	State	Sub-major head of accounts (in lakh Rs)				
		Flood Control (01)	Anti-Sea Erosion (02)	Drainage (03)	General (80)	Total (99)
(1)	(2)	(3)	(4)	(5)	(6)	(7)
2005-06	Andhra Pradesh	1350.87		11280.77		12631.64
	Arunachal Pradesh	575.00				575.00
	Assam	12883.68		.00		12883.68
	Bihar	18865.42		829.73		19695.15
	Chhattisgarh	1607.33		2988.34		4595.67
	Delhi	281.82		3871.49		4153.31
	Goa	187.98	114.98	183.92		486.88
	Gujarat	192.91		950.56		1143.47
	Haryana	6118.67				6118.67
	Himachal Pradesh	1670.20				1670.20
	Jammu & Kashmir	5298.12	6.01			5304.13
	Jharkhand	211.63				211.63
	Karnataka	545.67	430.08			975.75
	Kerala	1259.43	1562.75			2822.18
	Madhya Pradesh	232.89				232.89
	Maharashtra	151.29	455.68	1387.44		1994.41
	Manipur	1401.91			149.84	1551.75
	Meghalaya	504.01				504.01
	Mizoram		60.00			60.00
	Nagaland					
	Orissa	3563.17	573.47	700.62		4837.26
	Puducherry	715.31	293.62	1867.29		2876.22
	Punjab	6749.27		4601.02		11350.29
	Rajasthan	730.72				730.72
	Sikkim	452.41		22.18		474.59
	Tamil Nadu	2196.18	4125.47	495.58		6817.23
	Tripura	1427.26				1427.26
	Union Government	13079.41	508.97			13588.38
	Uttar Pradesh	23442.41		10325.84		33768.25
	Uttaranchal	3905.15				3905.15
	West Bengal	11103.11	19.48	8648.20	60.92	19831.71
	Total	120703.23	8150.51	48152.98	210.76	177217.48

Table 3: Distribution of total (revenue + capital) expenditure by sub-major head of accounts and State

Year	State	Sub-major head of accounts (in lakh Rs)				
		Flood Control (01)	Anti-Sea Erosion (02)	Drainage (03)	General (80)	Total (99)
(1)	(2)	(3)	(4)	(5)	(6)	(7)
2006-07	Andhra Pradesh	5329.78		14798.02		20127.80
	Arunachal Pradesh	2439.16				2439.16
	Assam	22233.01				22233.01
	Bihar	18148.31		892.04		19040.35
	Chhattisgarh	174.32		.00	.00	174.32
	Delhi	1736.44		4213.79		5950.23
	Goa	674.91	573.17	295.69		1543.77
	Gujarat	579.44		1706.98		2286.42
	Haryana	5849.00				5849.00
	Himachal Pradesh	1920.36				1920.36
	Jammu & Kashmir	6783.44	34.28	4.35		6822.07
	Jharkhand	-1559.11				-1559.11
	Karnataka	845.53	1282.71			2128.24
	Kerala	317.34	1424.42			1741.76
	Madhya Pradesh	514.83				514.83
	Maharashtra	1109.51	857.81	776.82		2744.14
	Manipur	2023.61			279.38	2302.99
	Meghalaya	302.95				302.95
	Mizoram		351.00			351.00
	Nagaland					
	Orissa	4629.71	774.14	1290.48		6694.33
	Puducherry	501.86	9.67	3301.97		3813.50
	Punjab	6774.19		932.55		7706.74
	Rajasthan	309.58				309.58
	Sikkim	936.67		85.46		1022.13
	Tamil Nadu	1346.52	2150.30	80.51		3577.33
	Tripura	2070.76				2070.76
	Union Government	13672.94	920.03			14592.97
	Uttar Pradesh	33614.85		8709.92		42324.77
	Uttaranchal	4065.14				4065.14
	West Bengal	13854.05		7311.24	25.40	21190.69
	Total	151199.10	8377.53	44399.82	304.78	204281.23

Table 3: Distribution of total (revenue + capital) expenditure by sub-major head of accounts and State

Year	State	Sub-major head of accounts (in lakh Rs)				
		Flood Control (01)	Anti-Sea Erosion (02)	Drainage (03)	General (80)	Total (99)
(1)	(2)	(3)	(4)	(5)	(6)	(7)
2007-08	Andhra Pradesh	19962.20		7362.05		27324.25
	Arunachal Pradesh	1411.21				1411.21
	Assam	19954.72				19954.72
	Bihar	32231.60		964.10		33195.70
	Chhattisgarh	418.54				418.54
	Delhi	1815.15		5590.36		7405.51
	Goa	992.89	462.16	449.19		1904.24
	Gujarat	9318.41		1899.53		11217.94
	Haryana	6448.76				6448.76
	Himachal Pradesh	2349.82				2349.82
	Jammu & Kashmir	6365.86		1.59		6367.45
	Jharkhand	681.70				681.70
	Karnataka	1471.66	504.54			1976.20
	Kerala	1416.44	4498.04			5914.48
	Madhya Pradesh	1629.65				1629.65
	Maharashtra	978.67	1553.23	1430.52		3962.42
	Manipur	1904.70				1904.70
	Meghalaya	421.00				421.00
	Mizoram		271.00			271.00
	Nagaland					
	Orissa	8514.41	1122.23	3754.30		13390.94
	Puducherry	601.99		2158.00		2759.99
	Punjab	10528.03		4956.68		15484.71
	Rajasthan	178.63				178.63
	Sikkim	730.58		164.43		895.01
	Tamil Nadu	1553.22	2842.58	80.51		4476.31
	Tripura	1809.80				1809.80
	Union Government	9786.28	1405.52			11191.80
	Uttar Pradesh	29688.40		5055.08		34743.48
	Uttaranchal	2641.01				2641.01
	West Bengal	16487.34	313.93	7053.33	51.99	23906.59
	Total	192292.67	12973.23	40919.67	51.99	246237.56

Table 3: Distribution of total (revenue + capital) expenditure by sub-major head of accounts and State

Year	State	Sub-major head of accounts (in lakh Rs)				
		Flood Control (01)	Anti-Sea Erosion (02)	Drainage (03)	General (80)	Total (99)
(1)	(2)	(3)	(4)	(5)	(6)	(7)
2008-09	Andhra Pradesh	18254.86		13055.04		31309.90
	Arunachal Pradesh	7057.08				7057.08
	Assam	30491.85				30491.85
	Bihar	66899.21		1555.97		68455.18
	Chhattisgarh	333.71				333.71
	Delhi	2596.07	3895.19	4167.29		10658.55
	Goa	1786.02	1504.93	624.04		3914.99
	Gujarat	8799.06		3048.89		11847.95
	Haryana	8104.58				8104.58
	Himachal Pradesh	2473.68				2473.68
	Jammu & Kashmir	9243.07				9243.07
	Jharkhand	991.77				991.77
	Karnataka	2414.85	954.89			3369.74
	Kerala	2629.16	11501.01			14130.17
	Madhya Pradesh	1264.94				1264.94
	Maharashtra	2059.85	2595.46	889.39		5544.70
	Manipur	7427.57				7427.57
	Meghalaya	602.25				602.25
	Mizoram		1108.19			1108.19
	Nagaland					
	Orissa	15730.62	1240.74	3196.76		20168.12
	Puducherry	367.01		1115.65		1482.66
	Punjab	8205.94		12430.85		20636.79
	Rajasthan	162.23				162.23
	Sikkim	2185.21		62.06		2247.27
	Tamil Nadu	4856.18	995.58	80.51		5932.27
	Tripura	1636.81				1636.81
	Union Government	17783.76	1513.51			19297.27
	Uttar Pradesh	36596.75		4420.25		41017.00
	Uttaranchal	2117.53				2117.53
	West Bengal	15813.42	239.19	8217.15	41.42	24311.18
	Total	278885.04	25548.69	52863.85	41.42	357339.00

Table 3: Distribution of total (revenue + capital) expenditure by sub-major head of accounts and State

Year	State	Sub-major head of accounts (in lakh Rs)				
		Flood Control (01)	Anti-Sea Erosion (02)	Drainage (03)	General (80)	Total (99)
(1)	(2)	(3)	(4)	(5)	(6)	(7)
2009-10	Andhra Pradesh	25997.74		13119.97		39117.71
	Arunachal Pradesh	3853.61				3853.61
	Assam	42428.48				42428.48
	Bihar	95174.52		2426.13		97600.65
	Chhattisgarh	538.70				538.70
	Delhi	2582.44		11388.18		13970.62
	Goa	4372.64	1664.83	1704.80		7742.27
	Gujarat	9255.22		4313.05		13568.27
	Haryana	7898.24				7898.24
	Himachal Pradesh	7209.00				7209.00
	Jammu & Kashmir	9278.65				9278.65
	Jharkhand	1132.51				1132.51
	Karnataka	703.91	748.15			1452.06
	Kerala	1612.28	14956.55			16568.83
	Madhya Pradesh	689.70				689.70
	Maharashtra	1697.03	4205.37	1240.61		7143.01
	Manipur	6505.45				6505.45
	Meghalaya	354.24				354.24
	Mizoram	.00				.00
	Orissa	19925.81	1398.56	467.56		21791.93
	Puducherry	352.94		2973.62		3326.56
	Punjab	12071.81		8674.88		20746.69
	Rajasthan	162.23				162.23
	Sikkim	673.83		11.93		685.76
	Tamil Nadu	17795.96	221.49	80.51		18097.96
	Tripura	1747.93				1747.93
	Union Government	15064.47	1595.60			16660.07
	Uttar Pradesh	38012.28		2052.98		40065.26
	Uttaranchal	859.85				859.85
	West Bengal	32173.95	124.06	9204.52		41502.53
	Total	360125.42	24914.61	57658.74		442698.77

Table 3: Distribution of total (revenue + capital) expenditure by sub-major head of accounts and State

Year	State	Sub-major head of accounts (in lakh Rs)				
		Flood Control (01)	Anti-Sea Erosion (02)	Drainage (03)	General (80)	Total (99)
(1)	(2)	(3)	(4)	(5)	(6)	(7)
2010-11	Andhra Pradesh	18627.46		14439.78		33067.24
	Arunachal Pradesh	9171.08				9171.08
	Assam	26189.84				26189.84
	Bihar	88904.20		2441.33		91345.53
	Chhattisgarh	428.20				428.20
	Delhi	2969.96		10114.51		13084.47
	Goa	4313.61	687.47	1526.02		6527.10
	Gujarat	9549.91		5138.73		14688.64
	Haryana	12131.00				12131.00
	Himachal Pradesh	12499.63				12499.63
	Jammu & Kashmir	13185.71	.00			13185.71
	Jharkhand	1156.72				1156.72
	Karnataka	1249.91	1130.34			2380.25
	Kerala	7579.62	5231.88			12811.50
	Madhya Pradesh	1588.18				1588.18
	Maharashtra	1743.90	8150.83	1239.93		11134.66
	Manipur	9809.72				9809.72
	Meghalaya	278.74				278.74
	Mizoram					
	Orissa	14946.49	2011.56	4427.98		21386.03
	Puducherry	1253.28		1016.79		2270.07
	Punjab	9190.58		3071.53		12262.11
	Rajasthan	192.42				192.42
	Sikkim	540.04		217.53		757.57
	Tamil Nadu	31635.60	398.65	80.51		32114.76
	Tripura	2342.32				2342.32
	Union Government	18383.59	963.07			19346.66
	Uttar Pradesh	48213.01		1683.64		49896.65
	Uttaranchal	2062.80				2062.80
	West Bengal	44756.09	623.55	8731.66	36.81	54148.11
	Total	394893.61	19197.35	54129.94	36.81	468257.71

Table 3: Distribution of total (revenue + capital) expenditure by sub-major head of accounts and State

Year	State	Sub-major head of accounts (in lakh Rs)				
		Flood Control (01)	Anti-Sea Erosion (02)	Drainage (03)	General (80)	Total (99)
(1)	(2)	(3)	(4)	(5)	(6)	(7)
Total	Andhra Pradesh	108852.32		132068.05		240920.37
1998-2011	Arunachal Pradesh	35653.27		100.00		35753.27
	Assam	222696.29		.00		222696.29
	Bihar	408732.92	.00	12735.05		421467.97
	Chhattisgarh	3586.59		2988.34	.00	6574.93
	Delhi	19912.54	3895.19	65072.04		88879.77
	Goa	13285.07	5407.33	5452.74		24145.14
	Gujarat	41157.80		28042.72		69200.52
	Haryana	56952.15				56952.15
	Himachal Pradesh	35522.08				35522.08
	Jammu & Kashmir	73568.36	47.29	31.45		73647.10
	Jharkhand	2966.09				2966.09
	Karnataka	10339.29	9069.55			19408.84
	Kerala	23928.73	55553.25			79481.98
	Madhya Pradesh	6904.99				6904.99
	Maharashtra	10859.18	21024.92	10405.48	0.02	42289.60
	Manipur	35382.69			840.30	36222.99
	Meghalaya	4215.62				4215.62
	Mizoram		1790.19			1790.19
	Nagaland					
	Orissa	82788.65	9787.59	15421.01		107997.25
	Puducherry	6038.78	669.99	15218.77		21927.54
	Punjab	86458.68		86845.00		173303.68
	Rajasthan	4837.75				4837.75
	Sikkim	10830.68		613.59	406.00	11850.27
	Tamil Nadu	65205.78	15086.67	1457.64		81750.09
	Tripura	17948.99				17948.99
	Union Government	142929.89	11541.84			154471.73

Table 3: Distribution of total (revenue + capital) expenditure by sub-major head of accounts and State

Year	State	Sub-major head of accounts (in lakh Rs)				
		Flood Control (01)	Anti-Sea Erosion (02)	Drainage (03)	General (80)	Total (99)
(1)	(2)	(3)	(4)	(5)	(6)	(7)
	Uttar Pradesh	261387.03		42090.60	.00	303477.63
Total	Uttaranchal	18669.17		1.90	.00	18671.07
1998-2011	West Bengal	182192.78	2152.32	97606.53	27116.62	309068.25
	Total	1993804.16	136026.13	516150.91	28362.94	2674344.14

Table 4: The Quantum of Damage due to Floods/Heavy Rains During 1953 to 2011

Figure are tentative

Sl No.	Year	Area affected (Mha)	Population affected (Mha)	Damage to Crops		Damage to Houses		Cattle lost (Number)	Human live lost (Number)	Damage to public utilities (Rs in crore)	Total damages crops, Houses & public utilities (Rs in crore) (col.6+8+11)
				Area (Mha)	Value (Rs in crore)	Numbers	Value (Rs in crore)				
1	2	3	4	5	6	7	8	9	10	11	12
1	1953	2.290	24.280	0.930	42.080	264924	7.420	47034	37	2.900	52.400
2	1954	7.490	12.920	2.610	40.520	199984	6.561	22552	279	10.150	57.231
3	1955	9.440	25.270	5.310	77.800	1666789	20.945	72010	865	3.980	102.725
4	1956	9.240	14.570	1.110	44.440	725776	8.047	16108	462	1.140	53.627
5	1956	4.860	6.760	0.450	14.120	318149	4.979	7433	352	4.270	23.369
6	1957	6.260	10.980	1.400	38.280	382251	3.896	18439	389	1.790	43.966
7	1958	5.770	14.520	1.540	56.760	648821	9.418	72691	619	20.020	86.198
8	1960	7.530	8.350	2.270	42.550	609884	14.309	13908	510	6.310	63.169
9	1961	6.560	9.260	1.970	24.040	533465	0.889	15916	1374	6.440	31.369
10	1962	6.120	15.460	3.390	83.180	513785	10.655	37633	348	1.050	94.885

Table 4: The Quantum of Damage due to Floods/Heavy Rains During 1953 to 2011

Figure are tentative

Sl No.	Year	Area affected (Mha)	Population affected (Mha)	Damage to Crops		Damage to Houses		Cattle lost (Number)	Human live lost (Number)	Damage to public utilities (Rs in crore)	Total damages crops, Houses & public utilities (Rs in crore) (col.6+8+11)
				Area (Mha)	Value (Rs in crore)	Numbers	Value (Rs in crore)				
1	2	3	4	5	6	7	8	9	10	11	12
11	1963	3.490	10.930	2.050	30.170	420554	3.701	4572	432	2.740	36.611
12	1964	4.900	13.780	2.490	56.870	255558	4.588	4956	690	5.149	66.607
13	1965	1.460	3.610	0.270	5.870	112957	0.195	7286	79	1.070	7.135
14	1966	4.740	14.400	2.160	80.150	217269	2.544	9071	180	5.736	88.430
15	1967	7.120	20.460	3.270	133.310	567995	14.264	5827	355	7.857	155.431
16	1968	7.150	21.170	2.620	144.610	682704	41.112	130305	3497	25.373	211.095
17	1969	6.200	33.220	2.910	281.900	1268660	54.423	270328	1408	68.112	404.435
18	1970	8.460	31.830	4.910	162.780	1434030	48.606	19198	1076	76.441	287.827
19	1971	13.250	59.740	6.240	423.130	2428031	80.241	12866	994	129.113	632.484
20	1972	4.100	26.690	2.450	98.560	897301	12.460	58231	544	47.174	158.194

Table 4: The Quantum of Damage due to Floods/Heavy Rains During 1953 to 2011

Figure are tentative

Sl No.	Year	Area affected (Mha)	Population affected (Mha)	Damage to Crops		Damage to Houses		Cattle lost (Number)	Human live lost (Number)	Damage to public utilities (Rs in crore)	Total damages crops, Houses & public utilities (Rs in crore) (col.6+8+11)
				Area (Mha)	Value (Rs in crore)	Numbers	Value (Rs in crore)				
1	2	3	4	5	6	7	8	9	10	11	12
21	1973	11.790	64.080	3.730	428.030	869797	52.482	261016	1349	88.489	569.001
22	1974	6.700	29.450	3.330	411.640	746709	72.434	16846	387	84.942	569.016
23	1975	6.170	31.360	3.850	271.490	803705	34.097	17345	686	166.050	471.637
24	1976	11.910	50.460	6.040	595.030	1745501	92.160	80062	1373	201.495	888.685
25	1977	11.460	49.430	6.840	720.610	1661625	152.290	556326	11316	328.948	1201.848
26	1978	17.500	70.450	9.960	911.090	3507542	167.574	239174	3396	376.100	1454.764
27	1979	3.990	19.520	2.170	169.970	1328712	210.606	618248	3637	233.627	614.203
28	1980	11.460	54.120	5.550	366.370	2533142	170.851	59173	1913	303.283	840.504
29	1981	6.120	32.490	3.270	524.560	912557	159.630	82248	1376	512.314	1196.504
30	1982	8.870	56.010	5.000	589.400	2397365	383.869	246750	1573	671.607	1644.876

Table 4: The Quantum of Damage due to Floods/Heavy Rains During 1953 to 2011

Figure are tentative

Sl No.	Year	Area affected (Mha)	Population affected (Mha)	Damage to Crops		Damage to Houses		Cattle lost (Number)	Human live lost (Number)	Damage to public utilities (Rs in crore)	Total damages crops, Houses & public utilities (Rs in crore) (col.6+8+11)
				Area (Mha)	Value (Rs in crore)	Numbers	Value (Rs in crore)				
1	2	3	4	5	6	7	8	9	10	11	12
31	1983	9.020	61.030	3.290	1285.850	2393722	332.327	153095	2378	873.429	2491.606
32	1984	10.710	54.550	5.190	906.090	1763603	181.308	141314	1661	818.164	1905.562
33	1985	8.380	59.590	4.650	1425.370	2449878	583.855	43008	1804	2050.043	4059.268
34	1986	8.810	55.500	4.580	1231.580	2049277	534.410	60450	1200	1982.535	3748.525
35	1987	8.890	48.340	4.940	1154.640	2919380	464.490	128638	1835	950.590	2569.720
36	1988	16.290	59.550	10.150	2510.900	2276533	741.600	150996	4252	1377.800	4630.300
37	1989	8.080	34.150	3.010	956.740	782340	149.820	75176	1718	1298.770	2405.330
38	1990	9.303	40.259	3.179	695.610	1019930	213.733	134154	1855	455.266	1708.920
39	1991	6.357	33.889	2.698	579.015	1134410	180.421	41090	1187	728.893	1488.329
40	1992	2.645	19.256	1.748	1027.578	687489	306.284	78669	1533	2010.670	3344.532

Table 4: The Quantum of Damage due to Floods/Heavy Rains During 1953 to 2011

Figure are tentative

Sl No.	Year	Area affected (Mha)	Population affected (Mha)	Damage to Crops		Damage to Houses		Cattle lost (Number)	Human live lost (Number)	Damage to public utilities (Rs in crore)	Total damages crops, Houses & public utilities (Rs in crore) (col.6+8+11)
				Area (Mha)	Value (Rs in crore)	Numbers	Value (Rs in crore)				
1	2	3	4	5	6	7	8	9	10	11	12
41	1993	11.439	30.409	3.206	1308.627	1926049	528.324	211193	2864	1445.534	3282.485
42	1994	4.805	27.548	3.963	888.622	914664	165.206	52315	2078	740.762	1794.590
43	1995	5.245	35.932	3.245	1714.787	2001898	1307.894	62438	1814	679.627	3702.308
44	1996	8.049	44.729	3.827	1124.491	726799	176.589	73208	1803	861.393	3005.743
45	1997	4.569	29.663	2.258	692.743	505128	152.504	27754	1402	1985.934	2831.181
46	1998	10.845	47.435	7.495	2594.167	1932874	1108.783	107098	2889	5157.771	8860.721
47	1999	7.765	27.993	1.753	1850.873	1613260	1299.057	91289	745	462.830	3612.760
48	2000	5.382	45.013	3.580	4246.622	2628855	680.943	123252	2606	3936.979	8864.544
49	2001	6.175	26.463	3.964	688.481	716187	816.474	32704	1444	5604.461	7109.416
50	2002	7.090	26.323	2.194	913.092	762492	599.368	21533	1001	1062.083	2574.543

Table 4: The Quantum of Damage due to Floods/Heavy Rains During 1953 to 2011

Figure are tentative

Sl No.	Year	Area affected (Mha)	Population affected (Mha)	Damage to Crops		Damage to Houses		Cattle lost (Number)	Human live lost (Number)	Damage to public utilities (Rs in crore)	Total damages crops, Houses & public utilities (Rs in crore) (col.6+8+11)
				Area (Mha)	Value (Rs in crore)	Numbers	Value (Rs in crore)				
1	2	3	4	5	6	7	8	9	10	11	12
51	2003	6.050	43.136	4.214	7298.130	775377	756.381	15161	2166	3259.924	11314.435
52	2004	5.264	43.688	2.863	772.044	1664388	879.601	134106	1813	1652.840	3519.811
53	2005	12.527	22.885	12.301	2375.313	721104	379.381	119674	1455	4684.469	7659.981
54	2006	1.010	25.154	1.771	2840.818	1497365	3634.048	266945	1431	13301.396	21531.114
55	2007	7.029	41.342	8.744	3112.732	3270146	2101.858	89337	3389	8036.737	13392.988
56	2008	3.311	29.850	3.135	3394.913	1565722	1130.641	101780	2876	5035.381	9566.335
57	2009	3.761	29.471	3.553	4224.859	1235628	10809.795	63383	1513	17503.703	32541.375
58	2010	2.508	18.237	4.943	5880.730	291743	864.702	39706	1582	12744.953	19490.394
59	2011	1.812	15.907	2.693	1386.097	1152518	410.475	35982	1761	6047.670	7844.242
	Total	425.521	1912.862	223.227	65950.824	74034301	33335.518	5699000	97551	110144.277	212959.284

Table 4: The Quantum of Damage due to Floods/Heavy Rains During 1953 to 2011

Figure are tentative

Sl No.	Year	Area affected (Mha)	Population affected (Mha)	Damage to Crops		Damage to Houses		Cattle lost (Number)	Human live lost (Number)	Damage to public utilities (Rs in crore)	Total damages crops, Houses & public utilities (Rs in crore) (col.6+8+11)
				Area (Mha)	Value (Rs in crore)	Numbers	Value (Rs in crore)				
1	2	3	4	5	6	7	8	9	10	11	12
	AVG	7.212	32.421	3.784	1117.811	1254818.661	565.009	96593.220	1653.407	1866.852	3609.479
	MAX	17.500	70.450	12.301	7298.130	3507542.000	10809.795	618248.000	11316.000	17503.703	32541.375
	(YEAR)	1978	1978	2005	2003	1978	2009	1979	1977	2009	2009
Source : As per the reports received in CWC from State Revenue Authorities.											
Neg : Negative						NR:0		NIL 0.000			