



उपग्रह दूरस्थ संवेदन द्वारा  
निज़ाम\_सागर जलाशय, तेलंगना का अवसादन आंकलन  
**Sedimentation Assessment of Nizamsagar Reservoir,  
Telangana, through Satellite Remote Sensing**



**Contact Address –**

Director,  
Remote Sensing Directorate,  
Central Water Commission  
425(N), Sewa Bhavan, RK Puram  
New Delhi- 110066  
Tel-Fax : 011-29583429  
e-mail : rsdte@nic.in



भारत सरकार  
दूरस्थ संवेदन निदेशालय  
केन्द्रीय जल आयोग, नई दिल्ली

Government of India  
Remote Sensing Directorate  
Central Water Commission, New Delhi

SEPTEMBER 2020



## **Sedimentation Assessment of Nizamsagar Reservoir, Telangana, through Satellite Remote Sensing**

### **Project Team**

Environment Management Org.,  
Central Water Commission,  
New Delhi.

### **Consultant**

Maharashtra Engineering Research  
Institute, Nashik,  
Maharashtra.

### **Overall Guidance**

Shri. Amrendra Kumar Singh,  
Chief Engineer,  
CWC, New Delhi.

Shri. A. P. Kohirkar,  
Director General,  
MERI, Nashik.

Shri. Rishi Shrivastava,  
Director, RS Directorate,  
CWC, New Delhi.

Shri. S. S. Deshmukh,  
Superintending Engineer,  
MERI, Nashik.

### **Project Incharge**

Shri. Ashish Awasthi,  
Dy. Director, RS Directorate,  
CWC, New Delhi.

Shri. Makarand Kulkarni,,  
Executive Engineer,  
REC, MERI, Nashik.

### **Supporting Team**

Mr. Abuzar Gaffari,  
Asst. Director, RS Directorate,  
CWC, New Delhi.

Shri. S. G. Wagh,  
Sub Divisional Engineer,  
REC, MERI, Nashik.

Mrs. A. Y. Morkar,  
Jr. Scientific Assistant,  
REC, MERI, Nashik.

## FOREWORD

Sedimentation is a byproduct of erosion in the catchment area of the reservoir and therefore, lesser the rate of erosion, smaller is the sediment load entering the reservoir. Type of soil, drainage density, vegetation, rainfall intensity and duration, shape of the catchment and land use/land cover affect the erosion. Deposition of silt takes place in various parts of reservoir which gradually reduces its capacity. Dead storage capacity as well as live storage capacity gets affected due to siltation. Information about reduction in the storage capacity is necessary for the planning and operational purposes. In some of the reservoirs, the rate of siltation has been higher than what was considered at the planning stage. Therefore, it has become necessary to conduct surveys in all the existing reservoirs for ascertaining siltation rate and consequently to assess their useful life. The data will also be useful for deriving siltation indices for different regions and river basins for use in the future design of the reservoirs. These surveys will enable selection of appropriate measures for controlling sedimentation along with efficient management and operation of reservoirs. The conventional techniques like boat mounted eco-sounder, HYDAC etc. are time consuming as well as costly. Remote sensing technique can be used to calculate the present live storage capacity of a reservoir due to its synoptic and repetitive coverage. These surveys based on remote sensing data are faster, economical and reliable.

Central Water Commission has been regularly involved in carrying out sedimentation assessment studies of various reservoirs through remote sensing techniques. As a part of 50 reservoirs study which were proposed to be taken up under the plan scheme “Research & Development Programme in Water Sector” during the period 2017-20 ( i.e. beyond 12<sup>th</sup> Five Year Plan) / upto the end of 14<sup>th</sup> Finance Commission, the work “Sedimentation assessment study of Forty (40) reservoirs in India through Remote Sensing Technique” was awarded to MERI, Nashik. Rest will be carried out in-house. Out of these forty (40) reservoirs, the study of twenty three (23) reservoirs were found feasible and hence, completed. The balance were found non feasible due to non-availability of cloud free imageries or non-attainment of FRL/MDDL.

I would like to compliment Shri Rishi Srivastava, Director (Remote Sensing Dte), Shri Ashish Awasthi, Dy. Director (Remote Sensing Dte) and other officers and staff of Remote Sensing Directorate for their dedicated efforts in bringing out this report. I would also like to compliment Shri Makarand Kulkarni, Executive Engineer (REC, MERI) and his team for timely completion of the report.

(Amrendra Kumar Singh)  
Chief Engineer (EMO)  
Central Water Commission

## **Acknowledgement**

The Project Team is thankful for the guidance provided by Chief Engineer (EMO), CWC, and Director, Remote Sensing Directorate, CWC, New Delhi in completing the work of “Sedimentation Assessment Study of Forty (40) Reservoirs in India through Remote Sensing Technique” and in particular the present study of Nizamsagar Reservoir.

The project team is thankful to the Secretary (CAD), Water Resources Department, Government of Maharashtra for his keen interest and constant encouragement in completion of this study. Our special thanks are due to Shri. A. P. Kohirkar, Director General, MERI and Shri. S. S. Deshmukh, Superintending Engineer, MERI for their valuable support and motivation for carrying out this work.

Our thanks are also due to Shri. A. Muralidhar, Superintending Engineer, Irrigation Circle office, Yellammagutta, Nizamabad, Telangana for the keen interest shown in the work. We are also thankful to Shri. K. Madhukar Reddy, Executive Engineer, Project Division, Bodhan, Nizamabad, Telangana Shri. Dattatri, Dy. Executive Engineer, Shri. D. Shiva Prasad, Assistant Executive Engineer Project Sub-Division, Nizamsagar for supplying all relevant data required for the present analysis

PROJECT TEAM

<b>CONTENTS</b>		
<b>Sr.No</b>	<b>Description</b>	<b>Page No.</b>
	Foreword	I
	Acknowledgement	II
	Contents	III
	List of Tables and List of Figures	IV
	Abbreviations and Units Used	V
	Executive Summary	VI
1	Introduction	1
2	Sources and Mechanism of Sedimentation	2
3	Control of Sedimentation	6
4	Remote Sensing in Reservoir Sedimentation	7
5	Objectives	8
6	Study Area	8
7	Previous Surveys	9
8	Approach of Present Study	12
9	Data	12
	9.1 Field data	12
	9.2 Satellite data	13
	9.3 Criteria for satellite dates selection	15
10	Software Used	16
11	Methodology	16
	11.1 Procedural flow chart	17
	11.2 Data loading	17
	11.3 Image geo-referencing	17
	11.4 Area extraction	18
	11.5 Water spread area extraction	18
	11.6 Water spread area at regular interval	20
	11.7 Calculation of reservoir capacity	20
	11.8 Comparison with earlier surveys	28
	11.9 Field visit and ground truth	30
12	Results and Discussions	30
13	Limitations	31
14	Conclusions	31
	References	31
	Annexure	
	I Salient Features	33
	II Reservoir Levels Pertaining to Cloud Free Satellite Data	34
	III Ground Truth Scenario	35

<b>Table No.</b>	<b>List of Tables</b>	<b>Page No.</b>
1	Summary of previous surveys	10
2	Status of cloud free levels achieved during 2016 to 2019	12
3	Details of satellite data	13
4	Range of NDWI values for Nizamsagar reservoir	19
5	Water spread areas estimated from satellite data	19
6	Areal extent and cumulative live storage capacity of reservoir at regular interval defined from graph	21
7	Comparison of water spread areas of reservoir (Mm <sup>2</sup> )	28
8	Comparison of live storage capacity of reservoir (Mm <sup>3</sup> )	29
9	Live storage capacity loss due to sedimentation from survey 1992	30

<b>Figure No.</b>	<b>List of Figures</b>	<b>Page No.</b>
1	Conceptual sketch of density currents in a reservoir	4
2	Longitudinal patterns of sediment deposition in reservoirs	5
3	Conceptual sketch of different levels in a reservoir	6
4	Index map Nizamsagar reservoir, Telangana	11
5	FCC's of Nizamsagar reservoir, Telangana	14
6	Flow chart showing methodology for reservoir capacity estimation	17
7	Water spread areas on different dates of satellite pass	22
8	SRS Elevation-Area curve Nizamsagar reservoir, Telangana	23
9	SRS Elevation-Capacity curve for Nizamsagar reservoir, Telangana	24
10	Elevation-Area curve for different years for Nizamsagar reservoir, Telangana	25
11	Elevation - Capacity curve for different years for Nizamsagar reservoir, Telangana	26
12	Modified SRS Elevation-Area-Capacity curve for Nizamsagar reservoir, Telangana	27

## Abbreviations

<b>AOI</b>	Area of Interest
<b>µm</b>	Micrometer
<b>CWC</b>	Central Water Commission
<b>DGPS</b>	Differential Global Positioning System
<b>ERS</b>	European Remote Sensing Satellite
<b>FCC</b>	False Color Composite
<b>FRL</b>	Full Reservoir Level
<b>IR</b>	Infra Red
<b>IRS</b>	Indian Remote Sensing Satellite
<b>LISS</b>	Linear Imaging Self Scanning Sensor
<b>MDDL</b>	Minimum Draw Down Level
<b>MERI</b>	Maharashtra Engineering Research Institute
<b>MOU</b>	Memorandum of Understanding
<b>MWL</b>	Maximum Water Level
<b>NDVI</b>	Normalized Difference Vegetation Index
<b>NDWI</b>	Normalized Difference Water Index
<b>NIR</b>	Near Infra Red
<b>NRSC</b>	National Remote Sensing Centre
<b>R</b>	Red band
<b>SAT</b>	Shift Along Track
<b>SQRT</b>	Square Root
<b>SRS</b>	Satellite Remote Sensing
<b>WSA</b>	Water Spread Area

## Units Used

<b>ha</b>	Hectare
<b>km</b>	Kilometer
<b>m</b>	Meter
<b>Mm<sup>2</sup></b>	Million square meter
<b>Mm<sup>3</sup></b>	Million cubic meter
<b>sq km</b>	Square kilometer
<b>sq mi</b>	Square mile

## **EXECUTIVE SUMMARY**

*Water resources sector has got high priority in all our developmental plans and accordingly large number of dams have been constructed to supply water for domestic, irrigation and industrial purposes. Natural processes like erosion in the catchment area and its deposition in various parts of the reservoir gradually, reduce the capacity of the reservoir. Dead as well as live storage get affected by it. The information about the reduction in capacity is necessary for all planning and operational purposes, which can be obtained through capacity surveys done at regular interval. The Remote Sensing technique can be used to calculate present capacity of the reservoir. It is very useful due to its simple analysis procedure and repetitive coverage by imagery. The surveys based on remote sensing data are faster, economical and more reliable. Department of Water Resources, River development and Ganga Rejuvenation, Ministry of Jalshakti, Government of India has initiated the programme to evaluate capacity of various reservoirs in the country. Accordingly the Central Water Commission has entrusted MERI, Nashik the work of “Sedimentation Assessment Study of Forty (40) Reservoirs in India through Remote Sensing Technique”. The present study is in regard to Nizamsagar Reservoir, Telangana, India.*

*Present study aims in updating the elevation-area-capacity curve of Nizamsagar Reservoir, Telangana and finding the capacity loss due to sedimentation in live storage. For carrying out the analysis, Resourcesat 2 and Resourcesat 2A LISS III data with 23.5 m resolution have been used. Satellite data for eight passes falling between MDDL (415.750 m) and FRL (428.250 m) are used for the analysis.*

*The Nizamsagar dam is located on the Manjira River. The dam site is located near Achampet village in Nizamsagar taluka Kamareddy district. The project has a designed gross capacity of 841.180 Mm<sup>3</sup> at the time of construction in 1930-31. In year 1967, hydrograihgic survey estimated loss 52.1 % capacity in total storage. Hence in order to compensate the loss of storage, FRL of reservoir was raised by 1.37 m from 426.87 m to 428.25 m in 1978. It results in increase in capacity by 150 Mm<sup>3</sup>. From 1992 hydrographic survey, the live capacity of reservoir at FRL was found to be 504.120 Mm<sup>3</sup>. This study reveals that the present capacity of reservoir is 560.602 Mm<sup>3</sup>. It shows no loss in live capacity in a period of 25 (1992-2017) years.*



# SEDIMENTATION ASSESSMENT OF NIZAMSAGAR RESERVOIR, TELANGANA, THROUGH SATELLITE REMOTE SENSING

## 1. Introduction

India – the second largest country in the world in terms of population – has about 17.3% of world's population, about 4% of world's water resources, and 2.44% of total geographical land area of the world. Therefore, in spite of having an average annual average precipitation to the tune of more than 1105 mm/year, the population density (lack of land resources) and per capita water resources availability make India a water-stressed country, as a whole. However, at a regional or basin level, many areas in the country are water-scarce or severely water-scarce owing to the spatial and temporal variability of water resources.

It is estimated that average annual precipitation over India is about 3880 BCM. Out of this precipitation, the average annual water resources availability of the country is about 1999.2 BCM, as estimated by Central Water Commission (CWC) in 2019. The water resources availability situation gets more murkier due to topographical and other constraints. Due to this, the total utilisable water resources in the country are about 1122 BCM (690 BCM of surface water and 432 BCM of groundwater). On one hand, the per-capita water resource availability is reducing due to increasing population and on the other, per-capita water usage is increasing due to industrialisation, urbanisation and change in lifestyles or dietary habits, making the available water resources still dearer.

India has typical monsoon-based climate where more than 75% rainfall occurs in three months i.e. July, August, and September. The total number of rainy days typically are in the tune of only 20-25 days per year (100-150 hours of rain per year) for most parts of the country. As a result, the bulk of annual water (75-80%) in rivers is available only in these three months. Therefore, in order to sustain life and other activities throughout the year from resources that are available only through 20-25 rainy days, it is absolutely essential to store the water in appropriately-sized storage structures (depending upon the topography and hydrology of the area).

So far, India has developed just 257.812 BCM as live storage capacity and 46.765 BCM is under construction. Realising the importance of storage structures, a large

number of reservoirs have been built, since independence, during each plan in almost all river basins, except Ganga and Brahmaputra, to tap the available surface water and to utilize it as and when needed. The capacity of reservoirs is gradually reducing due to silting and hence sedimentation of reservoir is of great concern for all the water resources development projects.

Correct assessment of the sedimentation rate is essential for assessing useful life of the reservoir as well as optimum reservoir operation schedule. Since 1958, when it was established that the live storage of reservoir is getting reduced due to siltation, a systematic effort has been made by various departments / organizations to evaluate the capacity of reservoirs. Various techniques like boat echo sounder, etc. being replaced by hydrographic data acquisition system (HYDAC) and HITECH method using Differential Global Positioning System (DGPS). The conventional techniques are found either time consuming or costly and require considerable manpower. Remote sensing technique to calculate the present live capacity of reservoir is found to be very useful in this context due to its synoptic and repetitive coverage. The surveys based on remote sensing data are faster, economical and more reliable.

These surveys will enable selection of appropriate measures for controlling sedimentation along with efficient management and operation of reservoirs thereby deriving maximum benefits for the society.

This report covers the study of Nizamsagar reservoir, Telangana by Central Water Commission, New Delhi.

## **2. Sources and Mechanism of Sedimentation**

The principal sources of sediments are as follows:

1. Deforestation
2. Excessive erosion in the catchment
3. Disposal of industrial and public wastes
4. Farming
5. Channelisation works
6. Human activities
7. Land development, highways, and mining

The sedimentation is a product of erosion in the catchment areas of the reservoir and hence lesser the rate of erosion, smaller is the sediment load entering the reservoir.

Various factors govern the erosion, transport and deposition of sediment in the reservoir. Type of soil, drainage density, vegetation, rainfall intensity and duration, shape of catchment and land use /land cover affect the erosion. Sediment transportation depends upon slope of the catchment, channel geometry and nature of riverbank and bed. Deposition is a function of bed slope of the reservoir, length of reservoir, flow patterns, inflow - outflow rates, grain size distribution, mode of reservoir operation, etc.

The knowledge of sedimentation in the reservoir, it is necessary to study the mechanism of sedimentation, which will help to mitigate reservoir sedimentation, prolong the life span of reservoirs and to take full benefits of reservoirs. The sediment deposition in a reservoir depends on the following:

- Longitudinal and lateral valley shape
- Length and shape of reservoir
- Flow patterns in reservoir
- Capacity to inflow volume ratio (trap efficiency)
- Grain size distribution of sediment
- Water and sediment discharges
- Mode of reservoir operation
- Nature of incoming floods

Reservoirs created by dams on rivers lose their storage capacity due to sedimentation. As water enters a reservoir, its velocity diminishes because of the increased cross-sectional area of the channel. If the water stored in the reservoir is clear and the inflow is muddy, the two fluids have different densities and the heavy turbid water flows along the channel bottom towards the dam under the influence of gravity (Figure 1). This condition is known as "stratified flow" and the underflow is called a "density current". A large proportion of the transported silt eventually gets deposited at different levels of a reservoir and causes reduction not only in dead storage but also in live storage capacities.

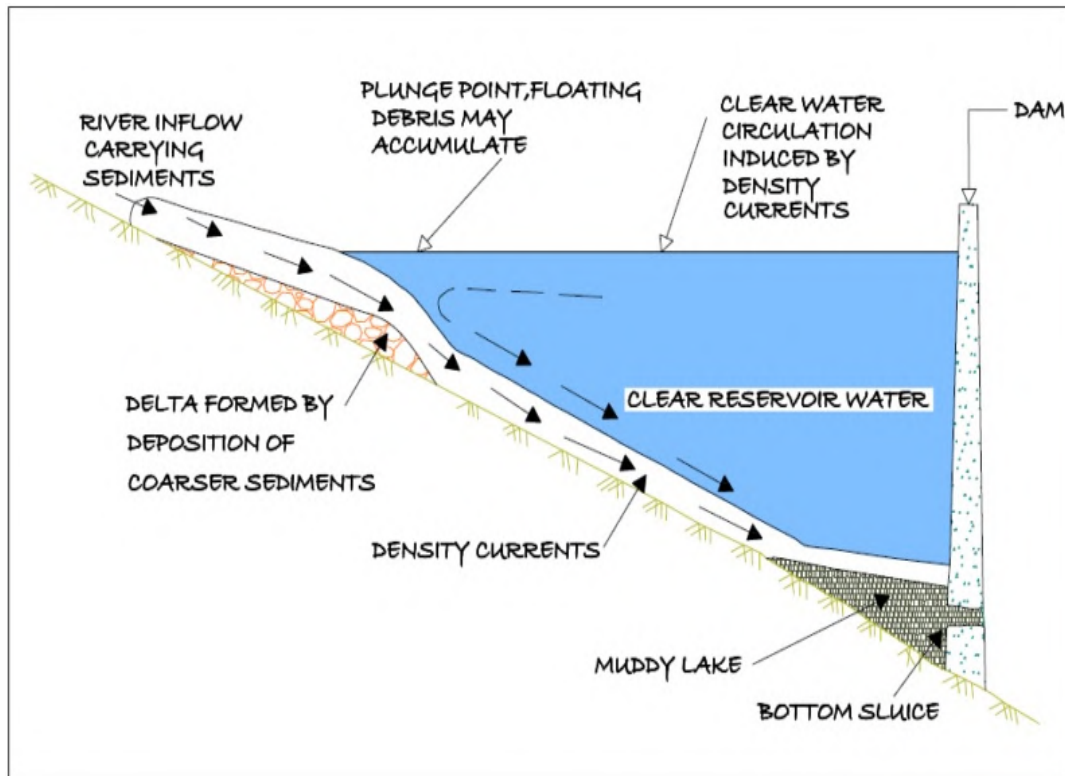


Figure 1: Conceptual sketch of density currents in a reservoir

Earlier it was believed that sediment always gets deposited in the bottom elevations of reservoir affecting the dead storage rather than depositing throughout the full range of reservoir depth. It is now fully realized that deposition takes place throughout the reservoir reducing the incremental capacity at all elevations.

Longitudinal deposition patterns in the reservoir will vary from one reservoir to another as influenced by pool geometry, discharge and grain size characteristic of the inflowing load and reservoir operation. There can be four types of depositing patterns in the reservoir as shown in the figure 2.

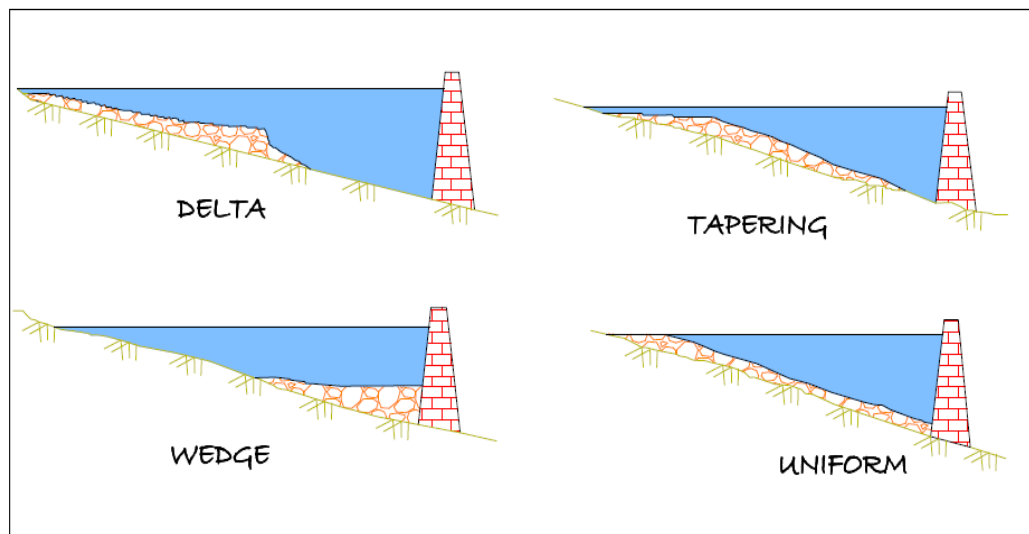


Figure 2: Longitudinal patterns of sediment deposition in reservoirs

Delta deposits contain the coarsest fraction of the sediment load, which is rapidly deposited at the zone of inflow. It may consist entirely of coarse sediment or may also contain a large fraction of finer sediment such as silt. Wedge-shaped deposits are thickest at the dam and become thinner moving upstream. This pattern is typically caused by the transport of fine sediment to the dam by turbidity currents. Wedge-shaped deposits are also found in small reservoirs with a large inflow of fine sediment, and in large reservoirs operated at low water level during flood events, which causes most sediment to be carried into the vicinity of the dam. Tapering deposits occur when deposits become progressively thinner moving toward the dam. This is a common pattern in long reservoirs normally held at high pool level, and reflects the progressive deposition of fines from the water moving toward the dam. Uniform deposits are unusual but do occur. Narrow reservoirs with frequent water level function and small load of fine sediment can produce nearly uniform deposition depths. Several factors like amount of sediment load, size distribution, fluctuations in stream discharge, shape of reservoir, stream valley slope, vegetation at the head of the reservoir, location and size of reservoir, outlets, etc., control the location of sediment deposits in the reservoir.

Figure 3 shows different levels in the reservoir where-in the capacity is affected. Reservoirs operate between Minimum Draw Down Level (MDDL), which is at sluice level to Full Reservoir Level (FRL), which is at dam level. The storage between these two levels is the live storage as shown in Figure 3. The storage below MDDL is the

dead storage. Water stored along the valley bed is known as valley storage.

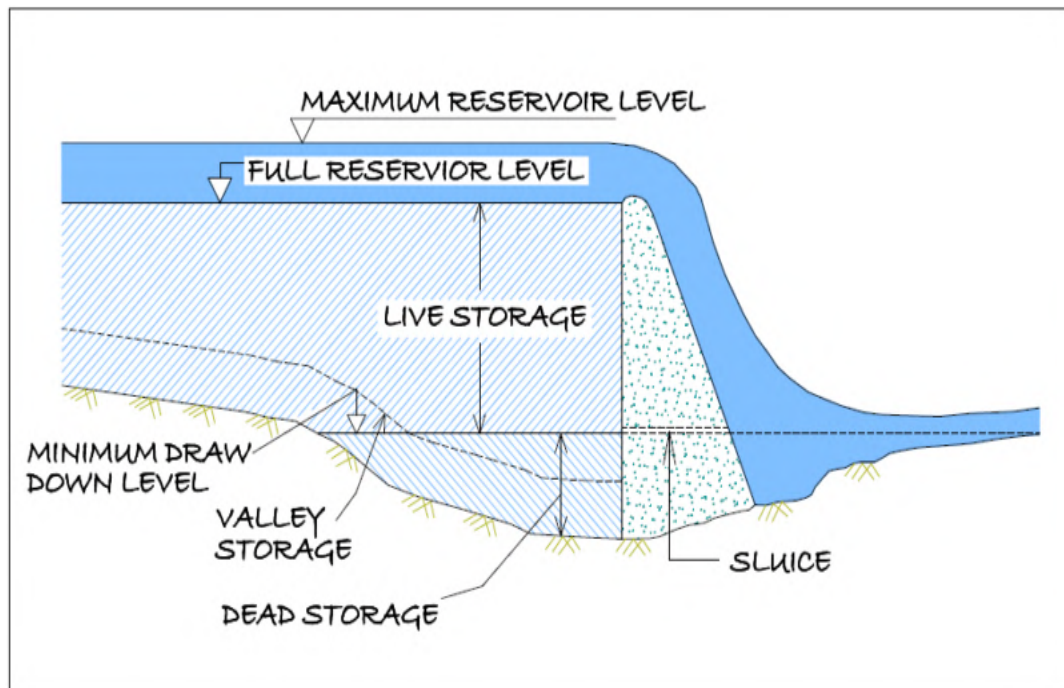


Figure 3 : Conceptual sketch of different levels in a reservoir

### 3. Control of Sedimentation

Due to the multiple variables involved in reservoir sedimentation, no single control measure can be considered as the most effective. The measures, which can be employed to limit sedimentation and turbidity, are as under:

1. Soil and water conservation measures within the drainage basin, contour ploughing, strip cropping, suitable farming practices, improvement of agricultural land, construction of small dams/ponds/terraces/check dams on gullies
2. Revetment and vegetation cover
3. Evacuation of sediment
4. Reservoir shoreline protection
5. Stream bank and flood plain protection
6. Ridge plantation such as pasture development and reservoir shoreline protection

Silting not only occurs in the dead storage but also encroaches into the live storage zone, which impairs the intended benefits from the reservoirs. Therefore, the problem

of sedimentation needs careful consideration. Adequate provision has to be made in the reservoir for accumulation of anticipated quantities of silt. Steps are also required to be taken to ensure that the storage capacities available are not lost or get reduced by accelerated sedimentation.

#### **4. Remote Sensing in Reservoir Sedimentation**

Remote sensing is the art and science of collecting information about earth's feature without being in physical contact with it. Various features on earth surface reflect or emit electromagnetic energy depending upon their characteristics. The reflected radiation depends upon physical properties of the terrain and emitted radiation depends upon temperature and emissivity. The radiations are recorded by the sensors onboard satellite and then are transmitted back to earth. Discrimination between features depends on the fact that the response from different features like vegetation, soil, water is different and discernable. Data received at ground stations, is digitally or visually interpreted to generate thematic maps.

Data acquisition is done from various polar orbiting satellites (orbiting around 800 to 900 km altitude), namely Indian Remote Sensing (IRS) satellite, European Remote Sensing (ERS) satellite, Landsat and SPOT satellites. Data from these satellites are being received and archived by National Remote Sensing Centre (NRSC) at Hyderabad.

Present study utilizes data from Resourcesat 2 and Resourcesat 2A satellite. They have LISS III sensor, which operates in four spectral bands. Three bands are in the visible and near infra red region with spectral band widths as 0.52-0.59  $\mu\text{m}$ , 0.62-0.68  $\mu\text{m}$  and 0.77-0.86  $\mu\text{m}$  and spatial resolution as 23.5 m. Fourth band with spectral bandwidth of 1.55-1.75  $\mu\text{m}$  falls in short wave infra red region.

Reservoir sedimentation surveys are essentially based on mapping of water-spread areas at the time of satellite over pass. It uses the fact that water-spread area of the reservoir reduces with the sedimentation at different levels. The water-spread area and the elevation information are used to calculate the volume of water stored between different levels. These capacity values are then compared with the previously calculated capacity values to find out change in capacity between different levels.

## 5. Objectives

The objective of the study is to estimate capacity loss of Nizamsagar reservoir due to sedimentation through satellite remote sensing. Following objectives will be achieved in the study.

- (i) Updating of Elevation-Area-Capacity curve using satellite data in live storage zone of Nizamsagar reservoir.
- (ii) Estimation of live storage loss due to sedimentation in Nizamsagar reservoir.

## 6. Study Area

The Nizamsagar dam is located near Achampet village in Nizamsagar Mandal, Kamareddy district, in Telangana state, on the Manjira river. The dam site is located at  $18^{\circ} 10' 00''$  N latitude and  $76^{\circ} 56' 00''$  E longitude. The location of the dam is shown in Figure 4 as Index Map.

The Nizamsagar dam serves dual purpose of irrigation and hydropower generation. The catchment area at the dam site is 21,693.000 sq km. The dam was completed in the year 1930-31. Original capacity of the reservoir was  $841.18 \text{ Mm}^3$ . From hydrographic survey conducted during 1967, the capacity was estimated to be equal to  $402.91 \text{ Mm}^3$ . This indicated a loss of 52.1% capacity. In order to compensate the loss of storage, FRL of the reservoir was raised by 1.37 m i.e. from 426.87 m to 428.25 m in the year 1978 to increase the capacity by  $150 \text{ Mm}^3$ . The capacity of the reservoir increased to  $504.140 \text{ Mm}^3$ .

Manjira rises in Balaghat range of hills in Bidar district of Maharashtra. The tributaries having their sources in the uplands of Osmanabad and Bidar districts join the main stream. River flows through Medak, Nizamabad and Nanded districts. River joins Godavari near Basar. Principal tributaries of Manjira area Tirna, Karanja and Haldi, which enter on the right bank and all of them, are on the upstream of Nizamsagar project. Lendi, Manar and Nalla Vagu are left bank tributaries located downstream of Nizamsagar project.

There are two physical regions in the sub basin namely high lands of Bhir and Osmanabad districts and plains from Bidar districts to the confluence of Manjira with the Godavari. Area ( $21693 \text{ sq. km}$ ) lies in Maharashtra ( $10484 \text{ sq. km}$ ), Karnataka ( $3668 \text{ sq. km}$ ) and Andhra Pradesh ( $7521 \text{ sq. km}$ ). Catchment area in Marathwada has



mainly cultivated land with black cotton soil and is devoid of forests. Area in Medak and Nizamabad districts is slightly undulating and has mixed soils and some area under forest cover. Salient features of Nizamsagar project are given in Annexure (I).

## **7. Previous Surveys**

As reported by field officials, previous hydrographic surveys have been carried out in year 1967, 1975, 1992 and 2013. While ground truthing, field officials have mentioned that year 1992 survey is being used for water planning in current scenario. Hence current survey results are being compared with year 1992 hydrographic survey. The results of previous surveys are summarized in Table 1.

Table 1 : Summary of previous surveys

Sr.No.	Elevation in metres	Gross Capacity in M. cum					Remarks
		1930	1967	1975	1992	2013	
1	414.53	91.36	0.71	0.46	0.00	0.00	
2	415.14	103.05	1.67	1.09	0.00	0.59	
3	415.75	116.31	3.35	2.90	0.02	2.39	Sill of head sluice
4	416.36	131.24	5.59	4.44	1.91	5.14	
5	416.97	147.91	8.18	7.42	3.99	8.64	
6	417.58	166.36	11.86	11.22	7.73	13.16	
7	418.19	186.82	17.04	15.64	11.95	18.87	
8	418.80	209.30	24.22	22.07	17.06	27.49	
9	419.40	234.16	33.61	30.97	22.87	38.25	
10	420.01	261.89	44.72	41.17	29.21	50.36	
11	420.62	292.90	57.98	52.88	38.34	63.86	
12	421.23	327.32	71.86	66.37	48.94	79.00	
13	421.84	365.33	87.85	82.72	61.99	95.69	
14	422.45	407.24	106.31	98.94	77.31	115.10	
15	423.06	453.02	127.56	118.71	94.12	137.10	
16	423.67	503.12	152.19	147.89	117.12	162.18	
17	424.28	557.41	180.44	172.72	144.61	190.84	
18	424.89	616.22	216.50	203.88	177.42	225.68	
19	425.50	679.96	263.88	237.86	220.03	265.13	
20	426.11	748.43	320.52	283.17	268.82	311.15	
21	426.72	822.10	402.91	334.13	335.90	363.41	
22	426.87	841.18	402.91	362.40	352.39	377.56	Original FRL
23	428.24				503.03	520.38	Raised FRL
24	428.25				504.140		

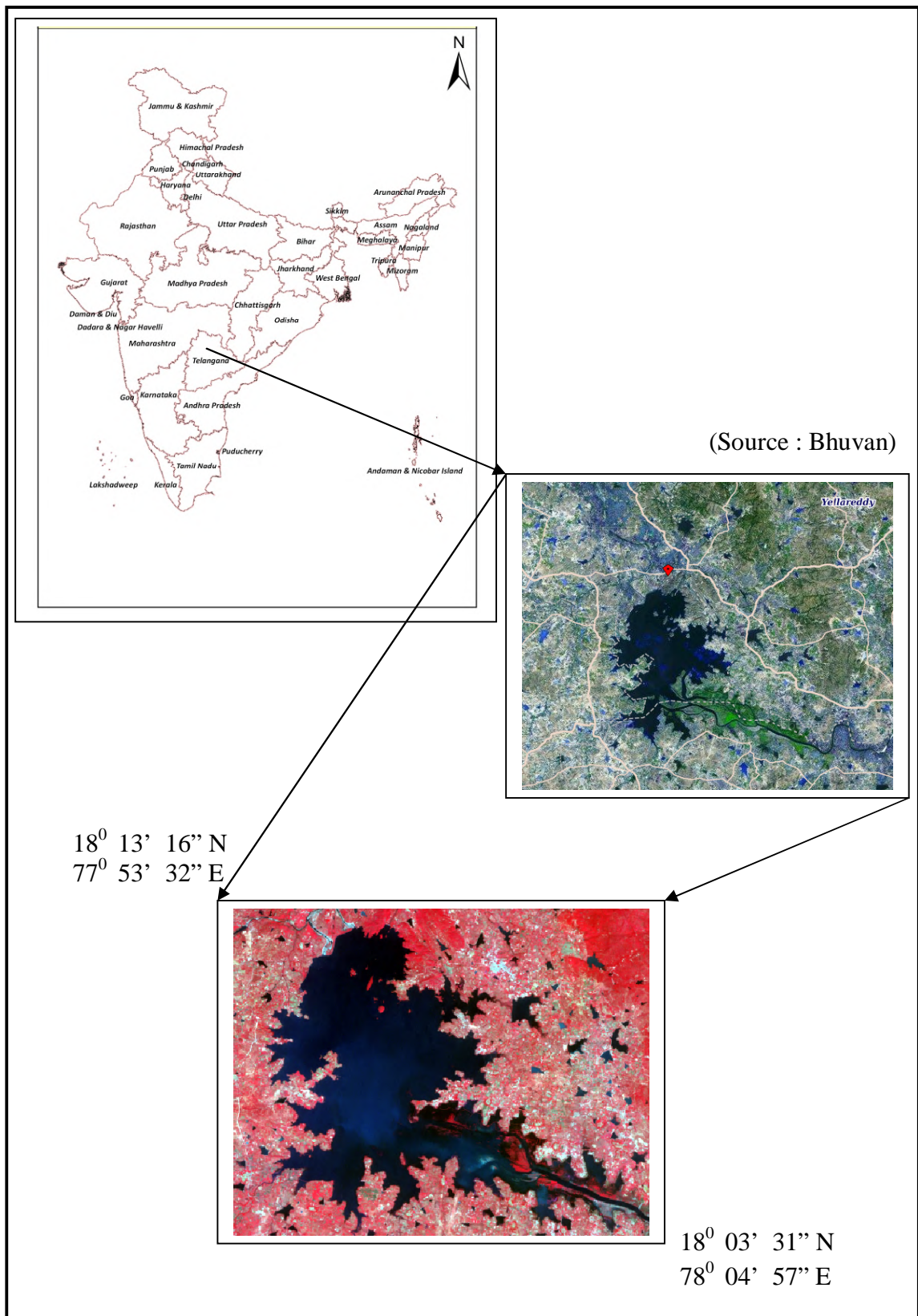


Figure 4 : Index map of Nizamsagar reservoir, Telangana

## 8. Approach of Present Study

Remote sensing technique is utilized to assess the sedimentation between operating levels of reservoir. This operating range between MDDL (415.750 m) and FRL (458.250 m) varies each year and depends upon yield in the reservoir and utilization of water. During 2016 to 2019 the minimum and maximum levels in this reservoir fluctuated in various ranges. They are shown in Table 2. The cloud free levels in this range are selected for analysis.

Table 2 : Status of cloud free levels achieved during 2016 to 2019

Sr. No.	Water year	Minimum level (m)	Maximum level (m)	Difference of minimum and maximum levels (m)
1	2016-2017	424.190	428.250	4.060
2	2017-2018	420.590	422.920	2.330
3	2018-2019	419.57	-	-

The information reveals that in the water year 2016-2017, reservoir was filled up to FRL= 428.250 m while it got depleted up to 419.57 m (MDDL= 415.750 m) in 2018-2019. For present study, four images from water year 2016-2017, three images from water year 2017-2018 and one image from water year 2018-2019 have been used. The year of survey of present study is treated as year 2016-2017.

## 9. Data

### 9.1 Field data

Following data set was obtained from Executive Engineer, ID., Projects Division, Bodhan for Nizamsagar reservoir and used in the analysis.

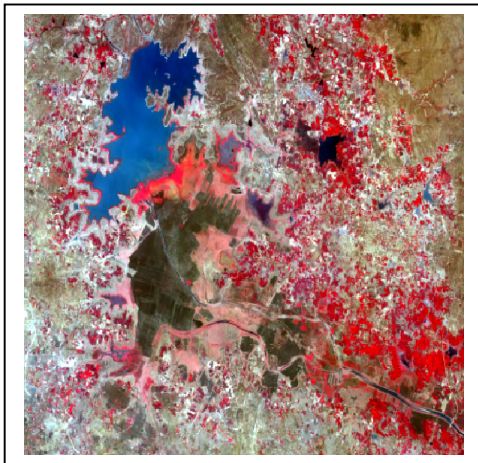
- Index map of reservoir
- Latitude and longitude of the reservoir
- Original area capacity table at 1m interval.
- Salient features of the project
- Reservoir levels for given dates of satellite pass.

## 9.2 Satellite data

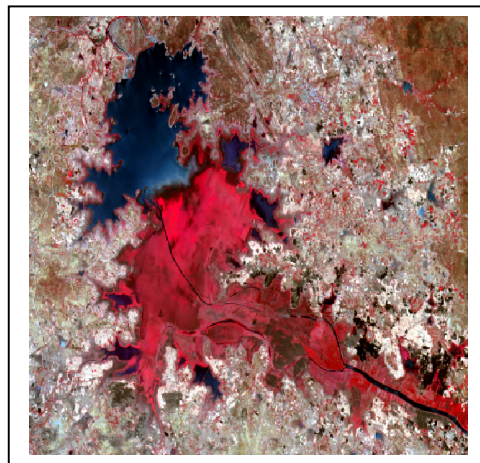
Resourcesat 2 and 2A LISS III images of 23.5 m resolution having Path 99, Row 60 have been used in present analysis. The FCC of the images are as given in Figure 5. The dates of satellite pass of selected images and corresponding reservoir levels are given in Table 3.

Table 3 : Details of satellite data

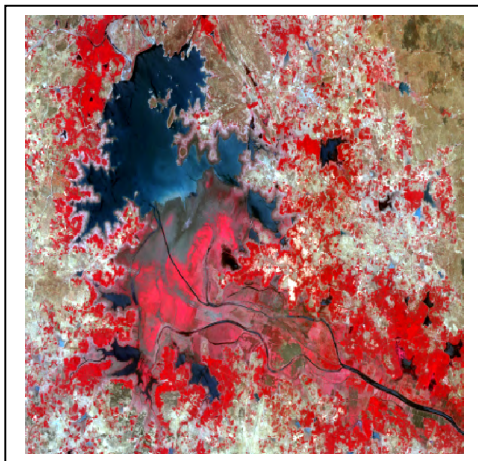
Sr. No.	Date of pass	Elevation (m)
1	19-Feb-19	419.570
2	24-May-17	420.590
3	18-Apr-17	421.710
4	06-Apr-17	422.920
5	25-Mar-17	424.190
6	01-Mar-17	425.780
7	27-Oct-17	427.150
8	01-Nov-16	428.250



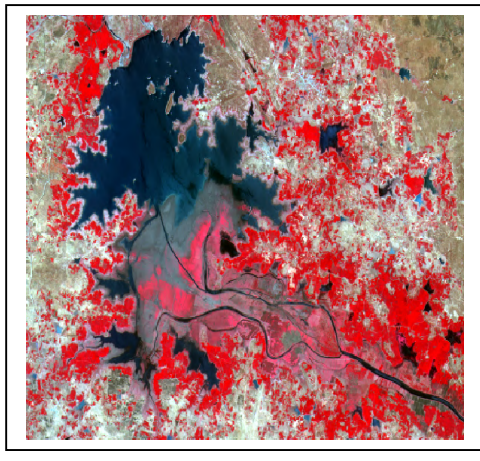
19-Feb-2019 (419.570 m)



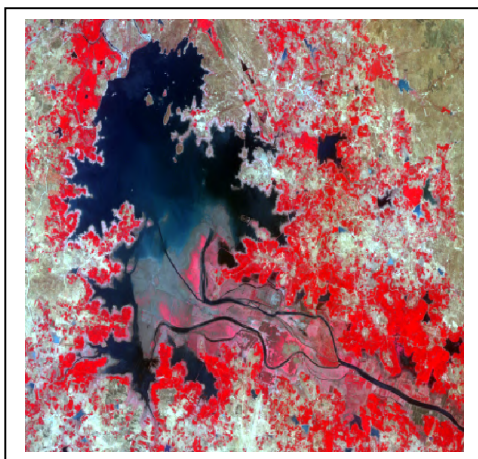
24-May-2017 (420.590 m)



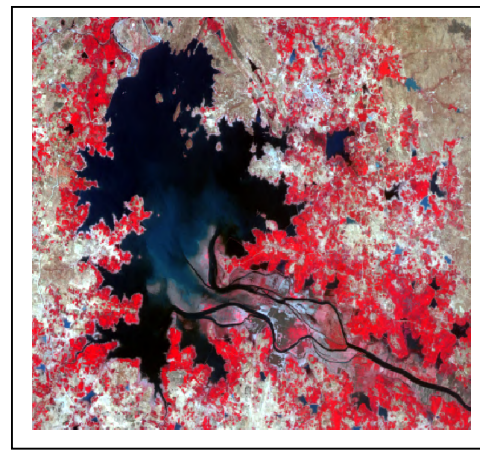
18-Apr-2017 (421.710 m)



06-Apr-2017 (422.920 m)



25-Mar-2017 (424.190 m)



01-Mar-2017 (425.780 m)

Figure 5 : FCC's of Nizamsagar reservoir, Telangana



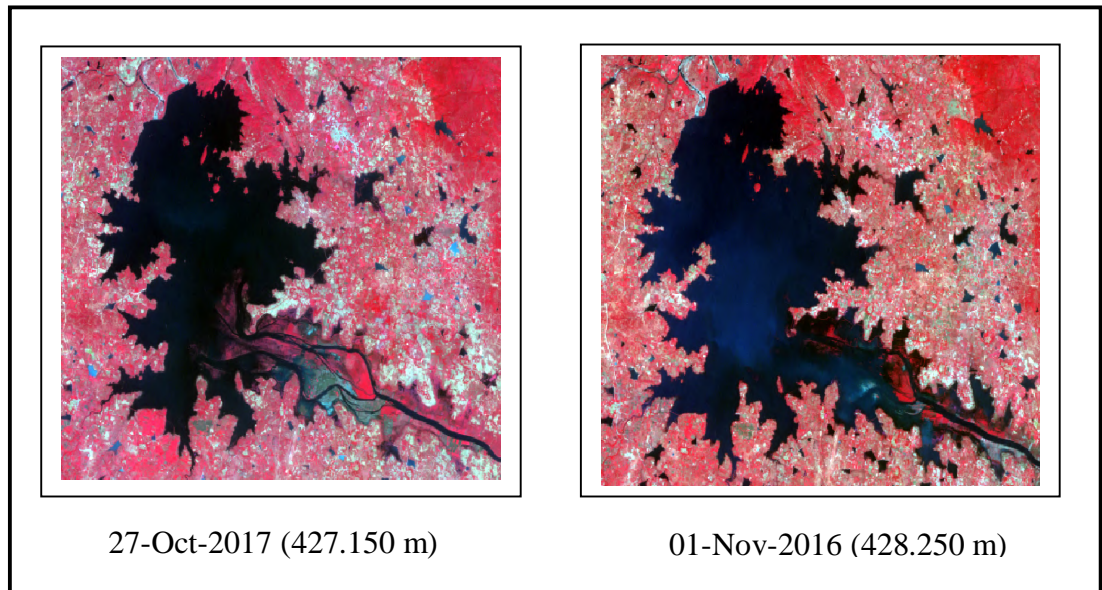


Figure 5 : FCC's of Nizamsagar reservoir, Telangana

### 9.3 Criteria for satellite dates selection

The selection of the satellite data for the present study is based on the following guidelines given in the MOU signed between CWC, New Delhi and MERI, Nashik.

- (i) To carry out the feasibility assessment of the given reservoir regarding availability of cloud free satellite data of dates of satellite pass corresponding to reservoir levels near MDDL as well as near FRL and at uniform interval to the extent possible in between MDDL and FRL for the latest water year or maximum up to two previous water years.
- (ii) To carry out sedimentation analysis through SRS technique to cover the entire live storage zone of the reservoir.
- (iii) In case of inability to cover the entire live storage zone of the reservoir due to non-availability of cloud free satellite data at FRL and MDDL, the study may be taken up if minimum of 80 % of live storage capacity is covered by the available cloud free dates of satellite pass on maximum and minimum reservoir levels.

NRSC website has been browsed to prepare a list of dates of satellite pass over the Nizamsagar reservoir for the year 2016 to 2019. The reservoir levels on these dates along with corresponding water spread areas and capacities have been obtained from field officers.

The reservoir has been depleted up to 419.570 m as against MDDL (415.750 m). The maximum level covered in the present study is FRL 428.250 m. Variation in the study level is  $(428.250 - 419.570) = 8.680$  m. The difference between FRL and MDDL is  $(428.250 - 415.750) = 12.500$  m.

In the present study, storage of  $480.180 \text{ Mm}^3$  has been covered as against total live capacity of  $504.120 \text{ Mm}^3$ . Thus the percentage live storage covered by this study is 95.25 %. (Annexure II)

Statement giving cloud free dates of satellite pass, reservoir levels, areas and capacities for the Nizamsagar reservoir has been prepared and submitted to CWC. The CWC has finalized the dates and placed order of images with NRSC, Hyderabad. The data has been received directly to MERI from NRSC, Hyderabad.

## **10. Software Used**

The analysis is done using the software ERDAS IMAGINE Ver. 2010. This software provides facility for satellite image analysis, by different methods.

## **11. Methodology**

The basic approach is to find out the water-spread areas from satellite data for different water levels between MDDL to FRL. The difference between areal spread of water between current year and earlier years is the areal extent of silting at these levels. The methodology for estimation of live capacity of reservoir using remote sensing consists of following major tasks

- (i) Digital data base creation
- (ii) Estimation of water-spread area
- (iii) Calculation of reservoir capacity
- (iv) Comparison of result with previous surveys
- (v) Estimation of live capacity loss due to sedimentation



## 11.1 Procedural flow chart

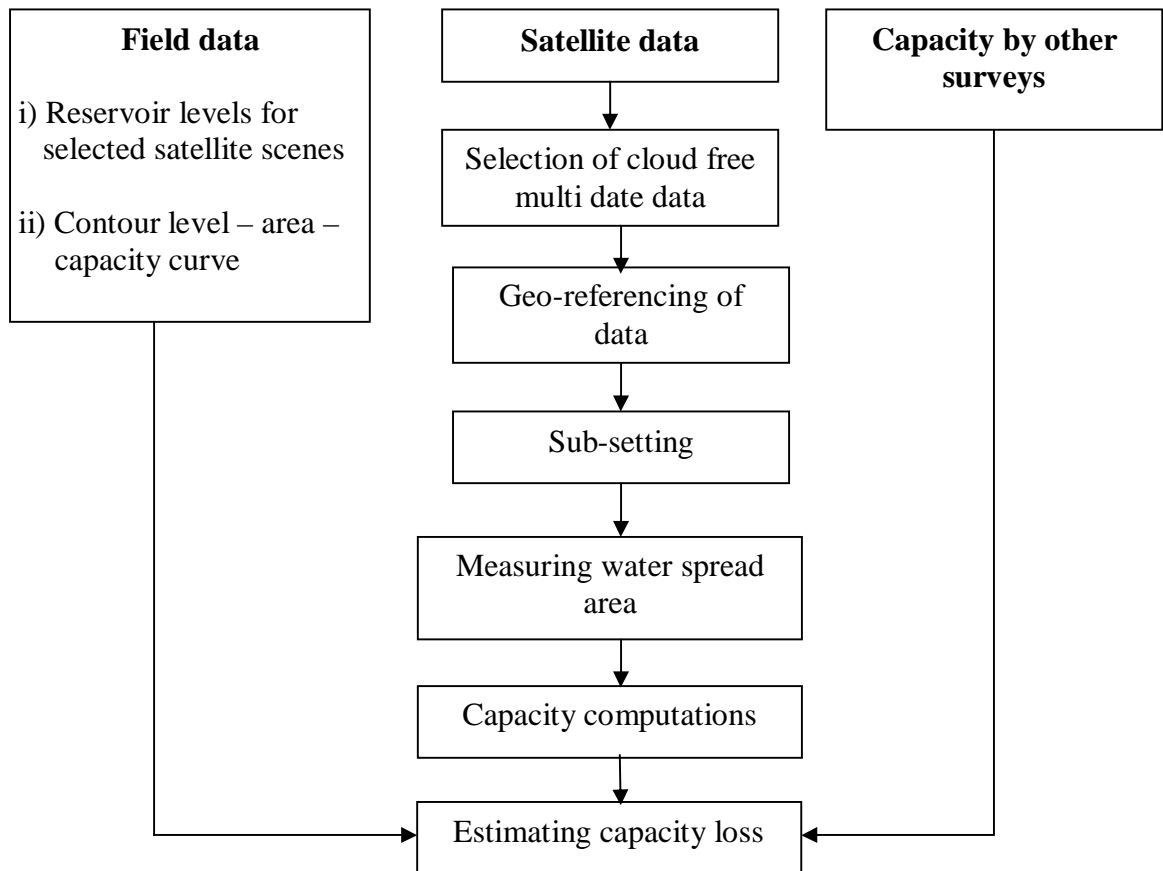


Figure 6 : Flow chart showing methodology for reservoir capacity estimation

## 11.2 Data loading

All the scenes are loaded in the system. These are listed as different files. They are renamed corresponding to falling levels. It helps in identifying the images during analysis. These files are in .img formats.

## 11.3 Image geo-referencing

Geo-referenced ready satellite images have been used in the analysis. However, when all the images are superimposed and swiped, slight displacements of images are noticed. Treating the image of the highest water level as the base image all the remaining images are again geo-referenced using image to image option of the ERDAS IMAGINE software.

## 11.4 Area extraction

A subset of the rectified scene is defined so as to facilitate and use in subsequent analysis. Rectified scene is loaded on the system. A small area around reservoir is extracted from one scene in interactive way. Once the area of interest (AOI) is finalized other scenes are extracted using the same AOI.

## 11.5 Water spread area extraction

There are various methods for the extraction of water area information from remote sensing imagery, which, according to the number of bands used, are generally divided into two categories, i.e. single-band and multi-band methods.

The multi-band method takes advantage of reflective differences of each involved band. There are two ways to extract water information using the multi-band method. One is through analyzing signature features of each ground target among different spectral bands, finding out the signature differences between water and other targets based on the analysis, and then using an if-then-else logic tree to delineate land from open water.

The other one is a band-ratio approach using two multispectral bands. One is taken from visible wavelengths and is divided by the other usually from near infrared (NIR) wavelengths. As a result, vegetation and land presences are suppressed while water features are enhanced. However, the method can suppress non-water features but do not remove them, and therefore the Normalized Difference Water Index (NDWI) was proposed by Mc Feeters (1996) to achieve this goal.

The NDWI is expressed as follows ( Mc Feeters 1996 ):

$$NDWI = \frac{Green - NIR}{Green + NIR}$$

Where Green is a green band such as TM band 1, and NIR is a near infrared band such as TM band 3.

This index is designed to

- (1) maximize reflectance of water by using green wavelengths;
- (2) minimize the low reflectance of NIR by water features; and
- (3) take advantage of the high reflectance of NIR by vegetation and soil features.

As a result, vegetation and land presences are suppressed while water features are enhanced.

Table 4 : Range of NDWI values for Nizamsagar reservoir

Date of pass	Minimum value	Maximum value
19-Feb-2019	0.0078	0.2981
24-May-2017	0.0384	0.2730
18-Apr-2017	0.0036	0.1254
06-Apr-2017	0.0779	0.3250
25-Mar-2017	-0.0419	0.2329
01-Mar-2017	-0.0407	0.2693
27-Oct-2017	-0.1099	0.2029
01-Nov-2016	-0.0709	0.2894

Using the above range of values, water spread areas are extracted for all the scenes. The Water Spread Areas (WSA) derived for all the scenes and their corresponding water levels are shown in Table 5.

Table 5 : Water spread areas estimated from satellite data

Date of pass	Elevation ( m )	Area (Mm <sup>2</sup> )
19-Feb-2019	419.570	18.633
24-May-2017	420.590	22.467
18-Apr-2017	421.710	29.135
06-Apr-2017	422.920	40.067
25-Mar-2017	424.190	61.646
01-Mar-2017	425.780	85.090
27-Oct-2017	427.150	101.938
01-Nov-2016	428.250	123.119

The water spread areas on selected dates of satellite pass are shown in Figure 6. The tail of the reservoir is defined by removing the river portion from extracted WSA, carefully.

### **11.6 Water spread area at regular interval**

Water levels on the dates of pass for selected satellite data are not available at regular interval. However to get WSA values at regular interval of elevation, area-elevation curve is plotted for the reservoir and a second order polynomial has been fitted. The areas at an elevation interval of 1.0 m are computed from this best fit equation. These values are given in Table 6.

### **11.7 Calculation of reservoir capacity**

Computation of reservoir capacities at different elevations have been derived using following formula

$$V = H / 3 * (A_1 + A_2 + \text{SQRT} (A_1 * A_2)).$$

Where V is reservoir capacity between two successive elevation of  $h_1$  and  $h_2$

H is the elevation difference,  $H = (h_1 - h_2)$

$A_1$  and  $A_2$  are areas of reservoir water spread at elevation  $h_1$  and  $h_2$  respectively.

The cumulative live capacities derived at different elevation have been shown in Table 6.

Table 6 : Areal extent and cumulative live storage capacity of reservoir at regular interval defined from graph

Water elevation m		Water spread area Mm <sup>2</sup> (2016-17)	Cumulative capacity Mm <sup>3</sup> (2016-17)
MDDL	415.750	7.476	0.000
	416.000	7.348	1.853
	417.000	7.840	9.446
	418.000	9.936	18.314
	419.000	13.636	30.051
	420.000	18.940	46.267
	421.000	25.848	68.572
	422.000	34.360	98.576
	423.000	44.476	137.886
	424.000	56.196	188.108
	425.000	69.520	250.848
	426.000	84.448	327.712
	427.000	100.980	420.303
	428.000	119.116	530.227
FRL	428.250	123.901	560.602

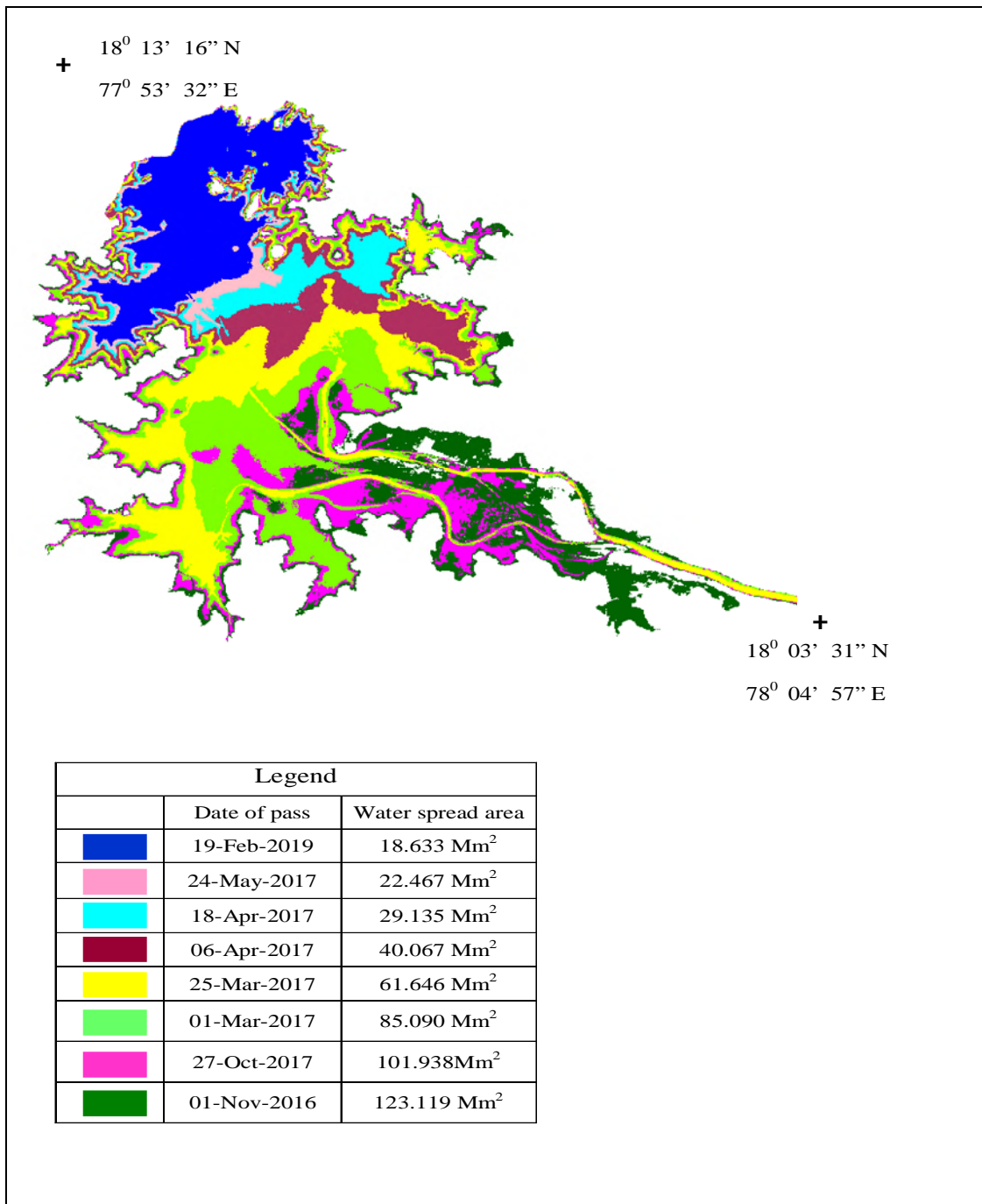


Figure 7 : Water spread areas on different dates of satellite pass

SRS elevation area curve is shown in Figure 8 and tabulated in Table 5. Elevation capacity curves is shown in Figure 9 and tabulated in Table 6. The elevation-area curve drawn through survey 1992 and present survey carried out for Nizamsagar reservoir are shown in Figure 10 which is based on Table 7. The elevation-capacity curve drawn through survey 1992 and present survey carried for the Nizamsagar reservoir are shown in Figure 11 and tabulated in Table 8. In Figure 12 updated SRS elevation-area-capacity curve is drawn and tabulated in Table 6.

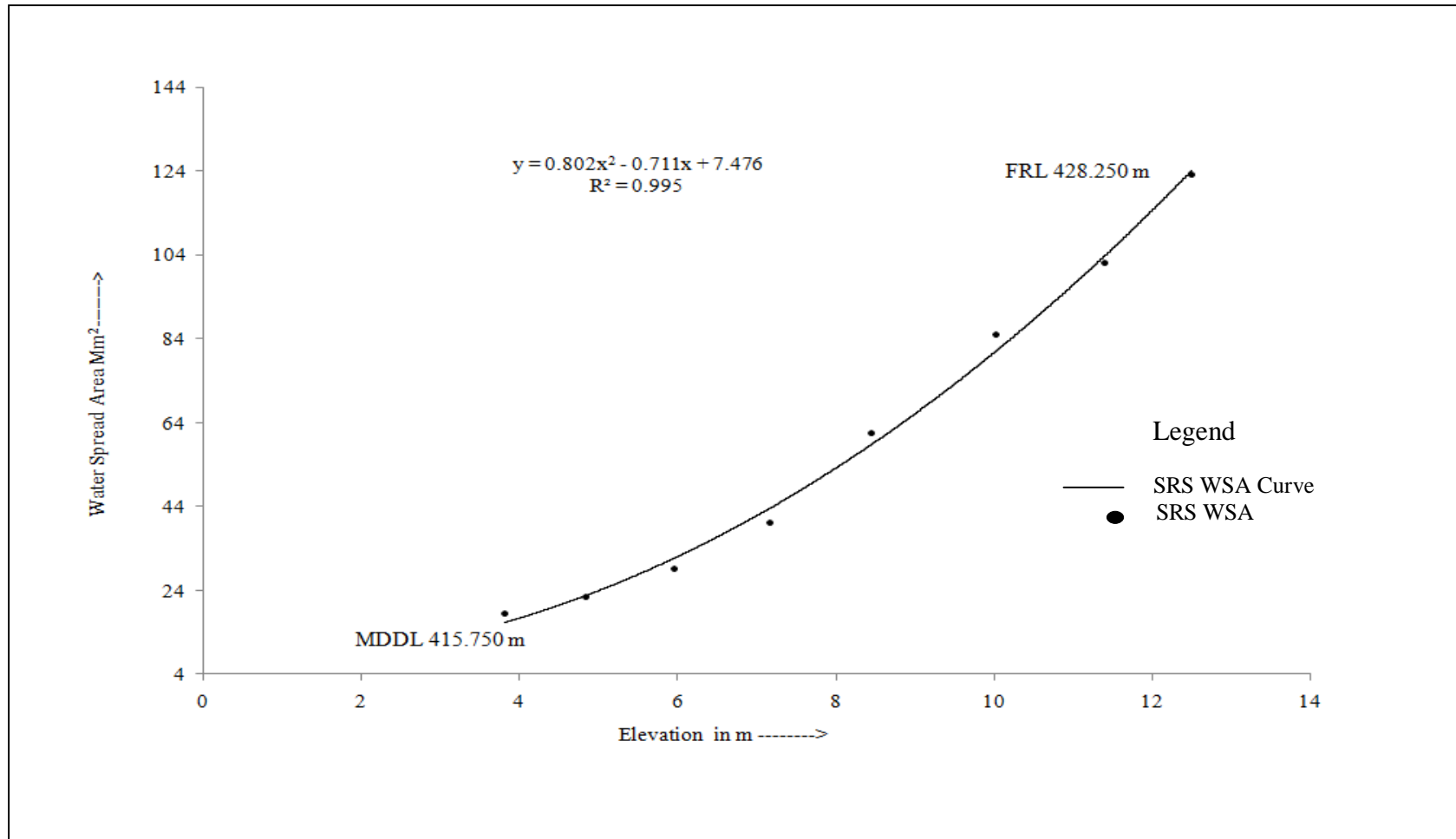


Figure 8 : SRS elevation-area curve for Nizamsagar reservoir, Telangana

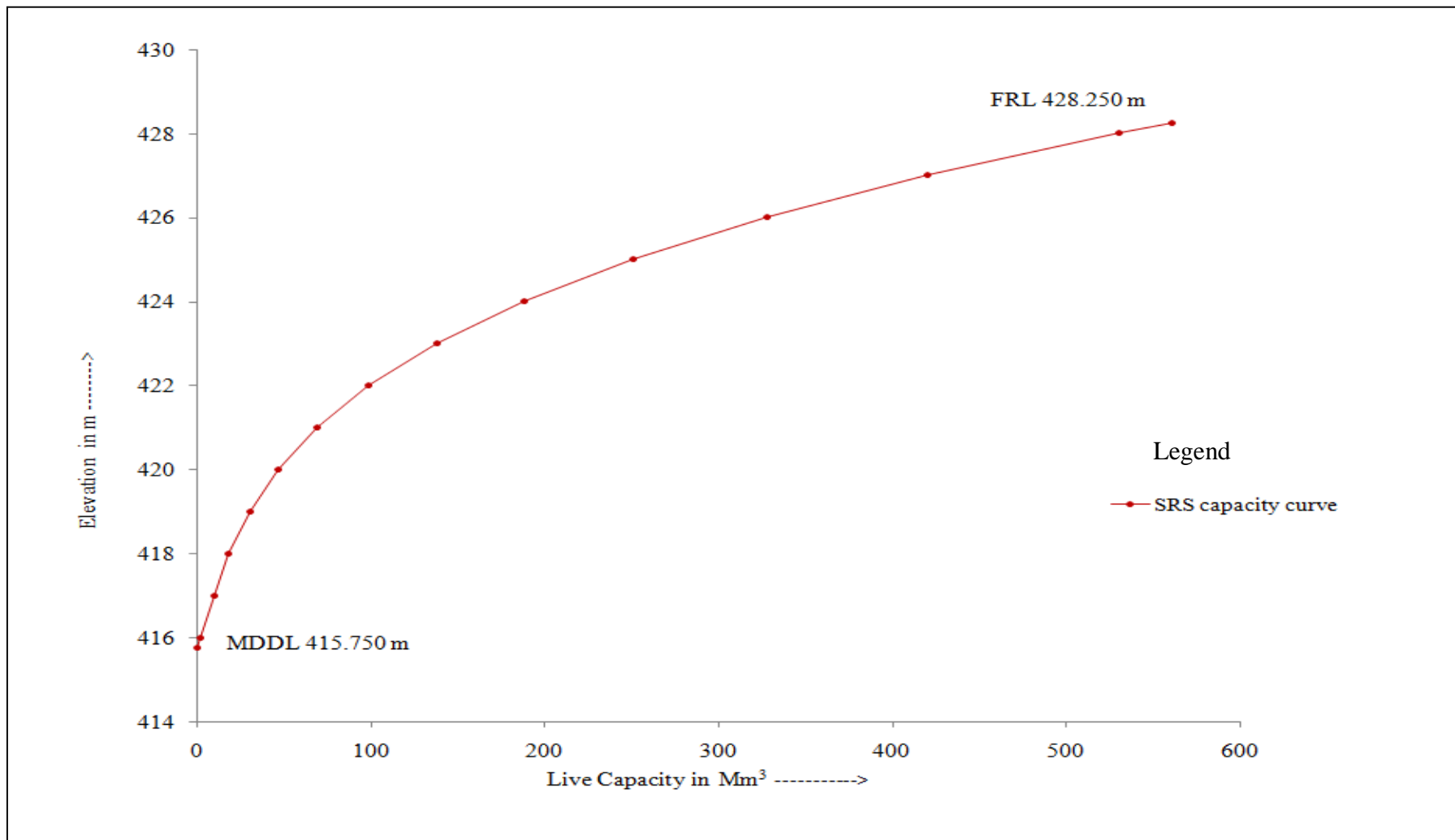


Figure 9 : SRS elevation-capacity curve for Nizamsagar reservoir, Telangana



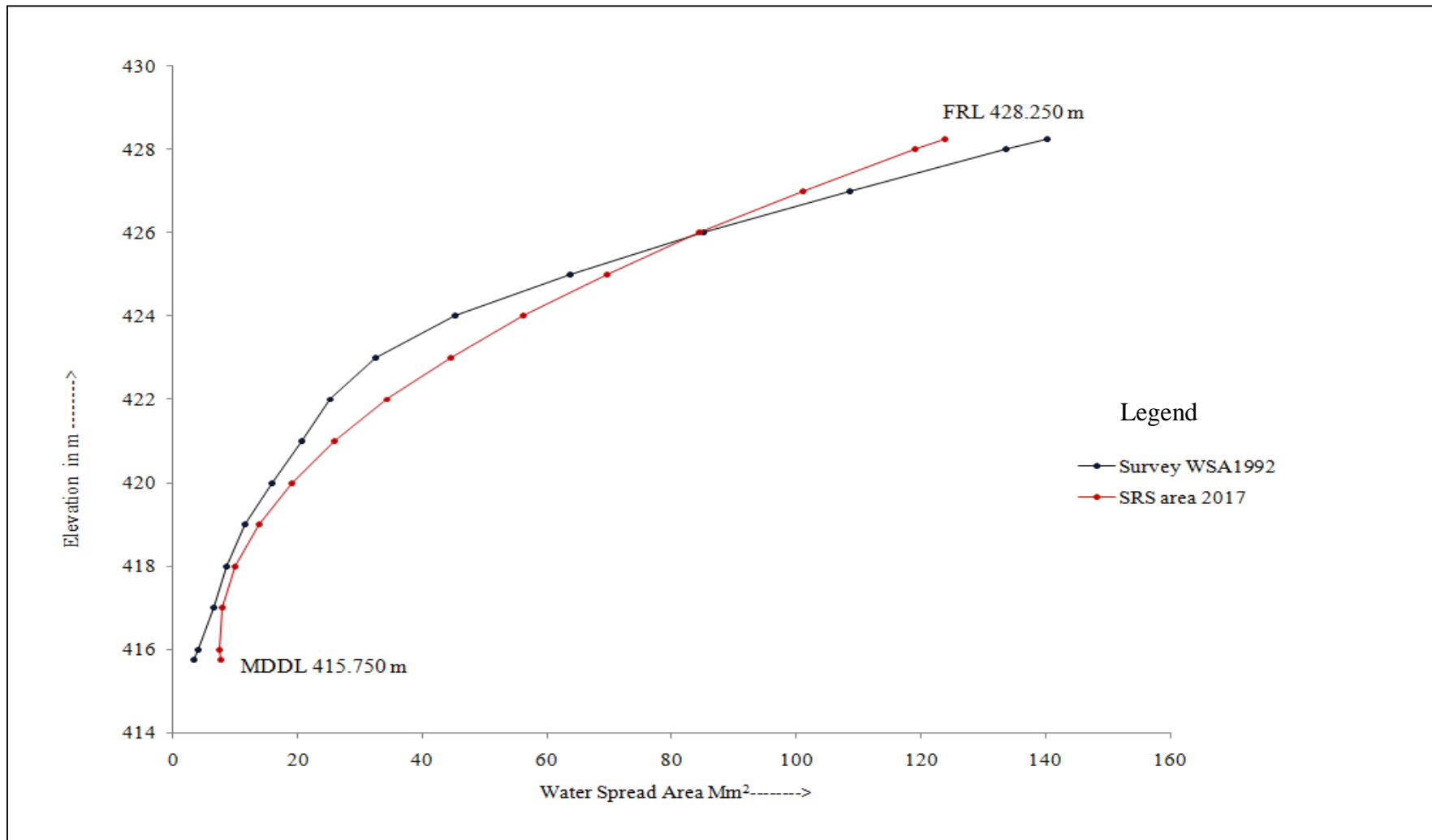


Figure 10 : Elevation - area curve for different years for Nizamsagar reservoir, Telangana

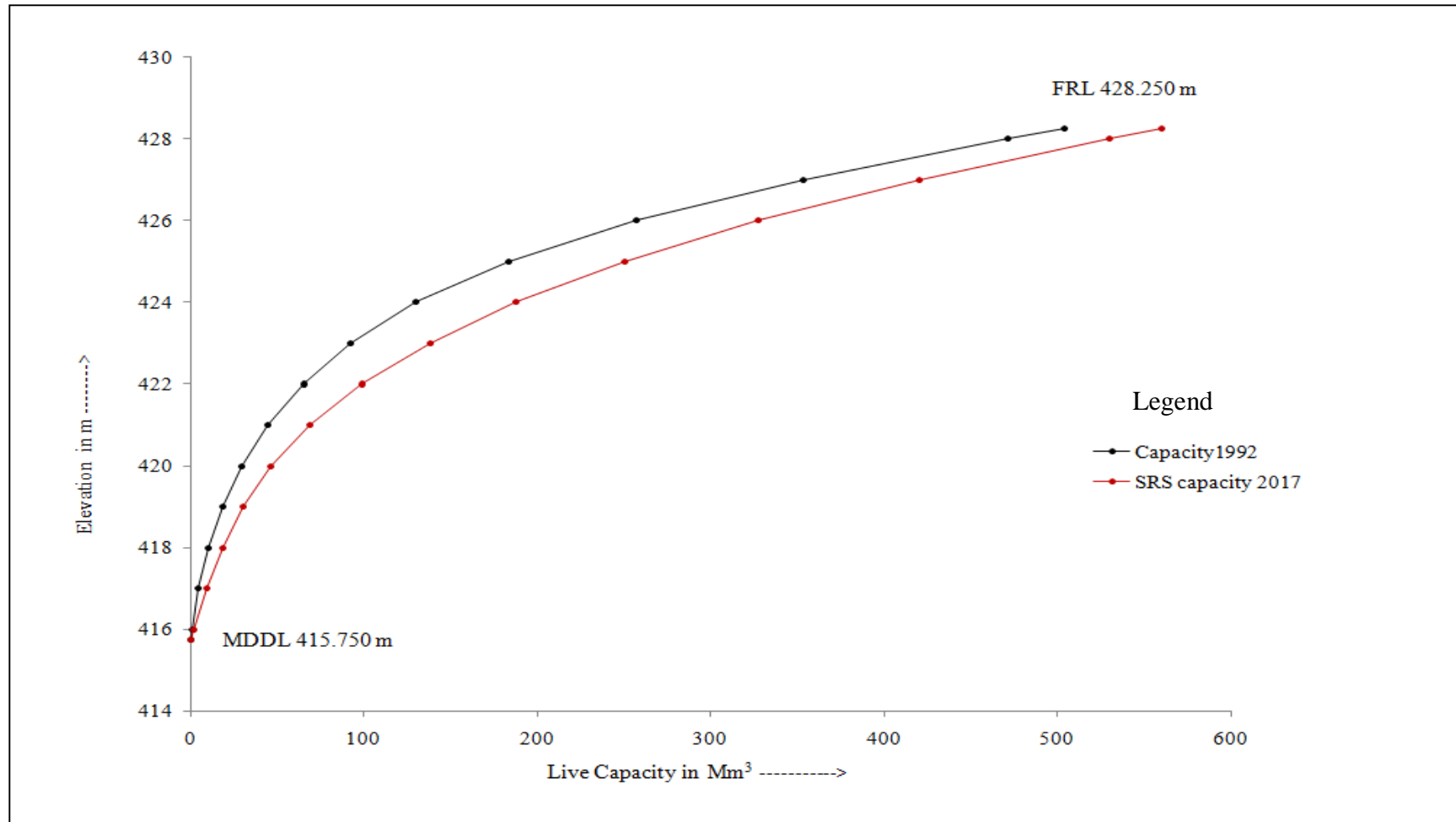


Figure 11 : Elevation - capacity curve for different years for Nizamsagar reservoir, Telangana

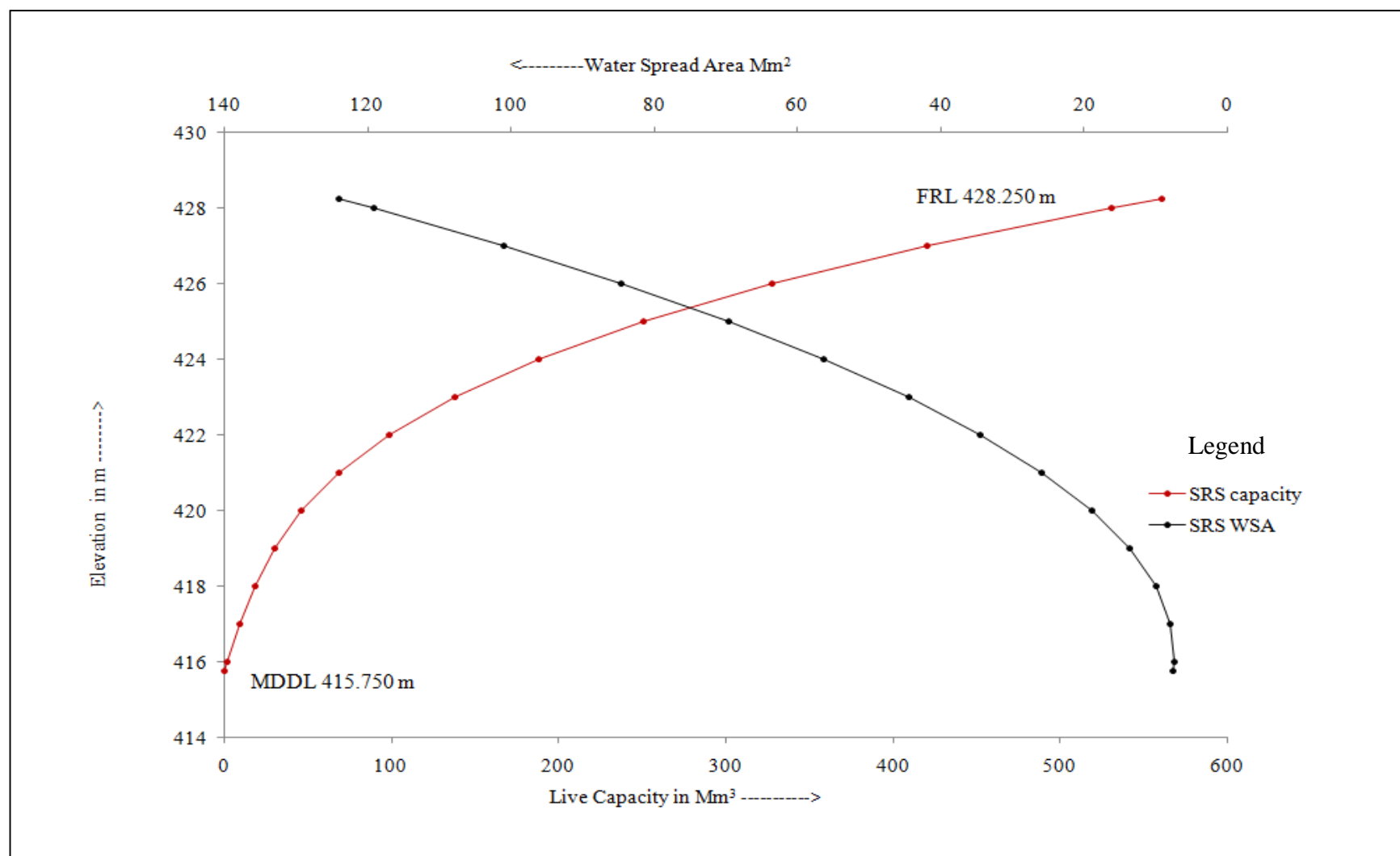


Figure 12 : Modified SRS elevation-area - capacity curve for Nizamsagar reservoir, Telangana

## 11.8 Comparison with earlier surveys

The comparison of water spread area obtained through remote sensing analysis with original surveyed data is given in Table 7.

Table 7 : Comparison of water spread areas of reservoir (Mm<sup>2</sup>)

Water elevation m		Survey 1992	SRS survey 2016-17
MDDL	415.750	3.330	7.476
	416.000	3.983	7.348
	417.000	6.428	7.840
	418.000	8.540	9.936
	419.000	11.488	13.636
	420.000	15.753	18.940
	421.000	20.568	25.848
	422.000	25.108	34.360
	423.000	32.475	44.476
	424.000	45.143	56.196
	425.000	63.765	69.520
	426.000	84.988	84.448
	427.000	108.515	100.980
	428.000	133.595	119.116
FRL	428.250	140.180	123.901

The comparison of present live storage capacity with original capacity is given in Table 8.

Table 8 : Comparison of live storage capacity of reservoir (Mm<sup>3</sup>)

<b>Water elevation m</b>		<b>Survey 1992</b>	<b>SRS survey 2016-17</b>
MDDL	415.750	0.000	0.000
	416.000	0.663	1.853
	417.000	4.070	9.446
	418.000	10.338	18.314
	419.000	18.713	30.051
	420.000	29.045	46.267
	421.000	44.003	68.572
	422.000	65.393	98.576
	423.000	91.843	137.886
	424.000	129.538	188.108
	425.000	183.310	250.848
	426.000	256.708	327.712
	427.000	353.028	420.303
	428.000	471.450	530.227
FRL	428.250	504.120	560.602

## 11.9 Field visit and ground truth

Field visit of the reservoir area has been carried out on 6<sup>th</sup> November 2019 for ground truth verification. Some predetermined ground truth points marked on the satellite image printouts along with their latitude and longitude values have been verified, with the help of GPS (Trimble Juno) receiver. Following officers were present during this visit.

### Officers from Resources Engineering Center, MERI, Nashik

- i) Shri. P. D. Kulkarni, Sectional Engineer
- ii) Shri. A. B. Dhokchaule, Junior Engineer

### Team from Nizamsagar reservoir project

- i) Er. Dattatri, Dy. Executive Engineer
- ii) Er. D. Shiva Prasad , Assistant Executive Engineer

Latitude and longitude values of the reservoir components have been recorded during the field visit. Reservoir levels used in the present analysis have been confirmed in field visit. The reservoir level on the day of visit was observed 423.69 m. The Photographs of ground truth scenario are shown in Annexure III.

## 12. Results and Discussions

The loss in live storage capacity of the reservoir in remote sensing survey (2016-17) due to sedimentation since survey (1992) is given in table 9.

Table 9 : : Live storage capacity loss due to sedimentation from survey 1992

Details	Survey 1992	SRS survey 2016-17
Live capacity (MCM) at FRL 428.250 m	504.120	560.602
Loss in capacity (MCM)	-	(+) 56.482
% Live capacity loss (since 1992)	-	-
Annual % live capacity loss	-	-
% Live capacity loss between two consecutive surveys ( of the original capacity)	-	-
% Loss in live storage between the survey since impoundment	-	-

The following observations are recorded from the present study.

- Present live capacity (year 2016-2017) of Nizamsagar reservoir is found as 560.602 Mm<sup>3</sup>. Modified SRS elevation-area-capacity values are given in Table 6 and Figure 12.
- As hydraulic data is inconsistent and reservoir is 90 years old, also the field authority is unable to give justification regarding the inconsistency of previous survey. Hence any comment cannot be given.

### **13. Limitations**

The sedimentation survey using Remote Sensing Technique has following limitations

- The remote sensing based capacity estimation works between the operating levels i.e. MDDL to FRL only. Thus changes can be estimated only in live capacity of reservoir.
- The cloud free satellite data throughout reservoir operation in single year is not possible. As such data from different years are selected.
- General error can creep in the identification of tail end of reservoir, particularly in the rainy season. Reservoir authorities have been consulted to remove this ambiguity.

### **14. Conclusions**

Following conclusions can be drawn from the study:

- The live storage capacity of Nizamsagar reservoir is 560.602 Mm<sup>3</sup> in year 2016 - 17.
- It is to be concluded that the live storage capacity is found to be increased with respect to findings of previous survey in 1992.
- It is to be mentioned that hydrographic survey is recommended.

### **References**

CWC (2015), Compendium of silting of reservoir in India, Technical report on silting of reservoir in India, WS and RS directorate, Central Water Commission, New Delhi.

Central Water Commission, Technical reports on reservoir capacity estimation using satellite remote sensing for different reservoirs. RS Directorate, New Delhi.

National Institute of Hydrology, Roorkee, Technical report on sedimentation in Nizamsagar reservoir using digital remote sensing technique 2006-2007.

R. V. Panse., R. V. Shrigiriwar M. B. Nakil, M. M. Kulkarni, S. A. Gaikwad, (2015), Sedimentation assessment of Krishnagiri reservoir, Tamil Nadu through satellite remote sensing, Technical Report, MERI, Nashik and CWC, Delhi.

Varshney, R.S., (1997), Impact of siltation on the useful life of large reservoirs, State of art report of INCOH, No. INCOH/SAR-11/97, NIH, Roorkee.



## Annexure I

### Salient Features

<b>A</b>	<b>Location</b>		
	Village	:	Achampet
	Mandal	:	Nizamsagar
	District	:	Kamareddy
	State	:	Telangana
	Longitude	:	76 <sup>0</sup> 56' 00"
	Latitude	:	18 <sup>0</sup> 10' 00"
	River	:	Manjira
<b>B</b>	<b>Hydrology</b>		
	Catchment area	:	21,693.00 sq km
<b>C</b>	<b>Masonry and Earthen Dam</b>		
	Length of dam	:	5.63 Km
	Type of the dam	:	Masonry backing with earthen filling
<b>D</b>	<b>Capacity of Dam</b>		
	Gross storage capacity at FRL	:	504.140 Mm <sup>3</sup>
	Dead storage capacity	:	0.020 Mm <sup>3</sup>
	Live capacity	:	504.120 Mm <sup>3</sup>
	Max. flood discharge	:	6,31,000 cusecs
	Type of gates	:	Vertical
	No., Size of gates	:	48 Nos.(three phases), 40' x 20'
<b>E</b>	<b>Reservoir Data</b>		
	Top of dam	:	430.377 m
	Maximum water level	:	428.250 m
	Full reservoir level	:	428.250 m
	Spillway crest level	:	422.148 m
	Minimum draw down level	:	415.750 m
	Power production capacity	:	40 MW
	Year of completion	:	1931

## Annexure II

### Reservoir Levels Pertaining to Cloud Free Satellite Data

Path/Row - 99 / 60	Gross storage capacity at FRL – 504.140 Mm <sup>3</sup>
FRL – 428.250 m	Live storage – 504.120 Mm <sup>3</sup>
MDDL - 415.750 m	Dead storage capacity – 0.020 Mm <sup>3</sup>

Date of pass	Reservoir level (m)	Gross Capacity covered (Mm <sup>3</sup> )
1	2	3
19-Feb-2019	419.570	23.960
24-May-2017	420.590	35.960
18-Apr-2017	421.710	58.440
06-Apr-2017	422.920	88.460
25-Mar-2017	424.190	136.350
01-Mar-2017	425.780	236.260
27-Oct-2017	427.150	366.850
01-Nov-2016	428.250	504.140
Variation in capacity		(504.140-23.960) = 480.180
% variation of live storage		(480.180/504.140)*100 = 95.25 %

## Annexure – III

### Ground Truth Scenario



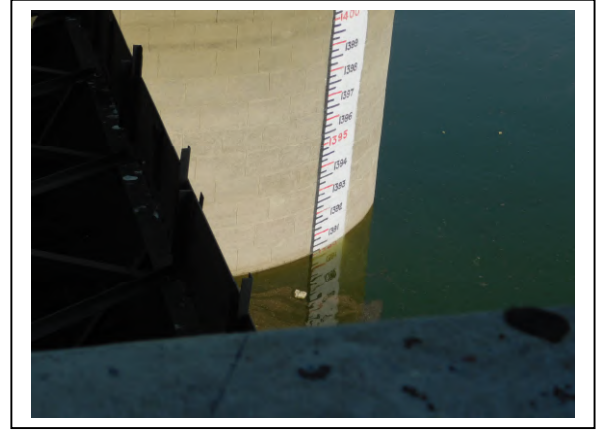
Dam view



Spillway



Submergence



Gauge post



Spillway (3<sup>rd</sup> phase)



Vertical gate



Vegetation in submergence



Vegetation in submergence



Crops near submergence



Sediment in periphery



Island in submergence



Ground truth team

## Contact Details

Director,  
Remote Sensing Directorate,  
Central Water Commission  
425(N), Sewa Bhavan, RK Puram  
New Delhi- 110066.  
Tel-Fax : 011-29583429.  
**e-mail : rsdte@nic.in**

Superintending Engineer,  
Maharashtra Engineering Research Institute,  
Nashik-422004.  
Fax : 0253 2530764.  
Phone : 0253 2531082.  
Web Site : [www.merinashik.org](http://www.merinashik.org).  
e-mail : [eeecwrd@gmail.com](mailto:eeecwrd@gmail.com).

Superintending Engineer,  
Irrigation Circle office, Yellammagutta,  
Nizamabad (Telangana).  
PIN- 503 003  
**Phone** : 8309928197.  
e-mail : [se\\_nizamabad@yahoo.co.in](mailto:se_nizamabad@yahoo.co.in)

Executive Engineer,  
Projects Division, (Irrigation division office),  
Bodhan, Nizamabad (Telangana),  
PIN- 503 185.  
**Phone** : 9963136412.  
e-mail : [eeibbodhan@gmail.com](mailto:eeibbodhan@gmail.com).

Executive Engineer,  
Resources Engineering Centre,  
Maharashtra Engineering Research Institute,  
MERI, Nashik-422004.  
Tel-Fax : 0253-2534676.  
e-mail : [eeecwrd@gmail.com](mailto:eeecwrd@gmail.com).