



भारत सरकार
GOVERNMENT OF INDIA

सरयू नहर परियोजना की द्वितीय प्रबोधन रिपोर्ट
SECOND MONITORING REPORT
ON
SARYU NAHAR PARIYOJANA, UTTAR PRADESH



ऊपरी गंगा बेसिन संगठन
UPPER GANGA BASIN ORGANISATION
केन्द्रीय जल आयोग
CENTRAL WATER COMMISSION

लखनऊ / LUCKNOW

मार्च / MARCH, 2020

Date of visit to the project: 18.02.2020 to 20.02.2020

Officers who participated in the Visit

Officers from UGBO, CWC Lucknow

- 1 Sh. B C Vishwakarma, Director (M&A), CWC Lucknow
- 2 Ms. Deepti Verma, Deputy Director, M&A Dte. CWC Lucknow
- 3 Sh. Prakash Ram, Assistant Director, M&A Dte. CWC Lucknow

Officers from Irrigation Department, Govt. of Uttar Pradesh

1. Sh. Devesh Shukla, SE, Rapti Nahar Nirman Mandal-2, Basti
2. Sh. Neelesh Jain, SE, Rapti Nahar Nirman Mandal-1, Balrampur
3. Sh. Niyaz Ahmed, SE, Navam Mandal Sinchai Karya, Bahraich
4. Sh. Rakesh Kumar Gautam, EE, Saryu Nehar Khand – 4, Basti
5. Sh. Santosh Kumar, EE, Rapti Nahar Nirman Khand-2, Tulsipur, Balrampur
6. Sh. D P Verma, EE, Rapti Nahar Nirman Khand-2, Sohratgarh, Sidharth Nagar
7. Sh. S N Upendra, EE, Rapti Nahar Nirman Khand-1, Sohratgarh, Sidharth Nagar
8. Sh. S L Verma, EE, Saryu Nahar Khand, Bansi, Sidharth Nagar
9. Sh. R C Verma, EE, Saryu Drainage Khand-5, Gonda
10. Sh. Surendra Prasad, EE, Rapti Nahar Nirman Khand-1, Tulsipur, Balrampur
11. Other concerned Engineering and technical staff

INDEX

| PARA NO. | DESCRIPTION | PAGE NO. |
|----------|--|----------|
| | PART-I : EXECUTIVE SUMMARY | |
| 1.0 | PROJECT IN BRIEF | 1-2 |
| 2.0 | PHYSICAL AND FINANCIAL PROGRESS | 2 |
| 3.0 | ISSUES IN FOCUS | 2-3 |
| 4.0 | ASSESSMENT OF THE PROJECT | 3-4 |
| | PART-II : MONITORING REPORT | |
| | CHAPTER-1: PROJECT DETAILS | |
| 1.1 | PROJECT COMPONENTS AS BEING EXECUTED | 5-6 |
| 1.2 | INCLUSION OF PROJECT UNDER NATIONAL PROJECT SCHEME | 6-7 |
| 1.3 | DIFFERENT PHASES OF PROJECT IMPLEMENTATION | 7-9 |
| | CHAPTER-2: PROJECT IMPLEMENTATION STATUS | |
| 2.1 | CHANGE IN SCOPE, IF ANY | 10 |
| 2.2 | COST REVISIONS | 11 |
| 2.3 | ORGANIZATIONAL SET UP FOR THE PROJECT | 11-12 |
| 2.4 | CONTRACTUAL ARRANGEMENT | 12 |
| 2.5 | QUALITY ASSESSMENT | 12 |
| 2.6 | LAND ACQUISITION, RESETTLEMENT & REHABILITATION | 13 |
| 2.7 | ENVIRONMENT AND FOREST CLEARANCE | 13 |
| 2.8 | PROPOSAL UNDER NATIONAL PROJECT AND OPTIMIZATION | 13-14 |
| 2.9 | LATEST ESTIMATED COST | 14 |
| 2.10 | FAST TRACK PROFORMA CLEARANCE (FTPC) OF THE PROJECT | 15 |
| 2.11 | EXTERNAL ASSISTANCE / CENTRAL ASSISTANCE | 15-16 |
| | CHAPTER-3: PROJECT IMPLEMENTATION PROGRESS | |
| 3.1 | PHYSICAL AND FINANCIAL PROGRESS OF DIFFERENT COMPONENTS OF THE PROJECT | 17 |
| 3.2 | PROJECT POTENTIAL | 18 |
| 3.3 | FINANCIAL PROGRAMME AND PROGRESS | 19 |
| 3.4 | FINANCIAL MANAGEMENT | 19 |
| 3.5 | MONITORING OF PROJECT AT STATE /PROJECT LEVEL | 20 |

| PARA NO. | DESCRIPTION | PAGE NO. |
|---|---|----------|
| | CHAPTER-4: OBSERVATIONS/ SUGGESTIONS BASED ON SITE VISIT | |
| 4.1 | OBSERVATIONS/ SUGGESTIONS | 21-26 |
| PART-III : SCHEMATIC DIAGRAMES & INDEX MAP | | |
| FIGURE-1 | SCHEMATIC DIAGRAM OF SARYU NAHAR PARIYOJANA | 27-28 |
| FIGURE-2 | INDEX MAP | 29 |
| FIGURE-3 | SCHEMATIC DIAGRAM OF CAMPIERGANJ BRANCH SYSTEM | 30 |
| PART-IV : PHOTOGRAPHS | | |
| | PHOTOGRAPHS OF SOME OF THE VISTED SITES | 31-45 |
| PART-V : ANNEXURES | | |
| ANNEXURE NO. | DETAILS OF ANNEXURE | PAGE NO. |
| ANNEXURE-1 | SALIENT FEATURES OF THE PROJECT | 46-47 |
| ANNEXURE-2 | EFC DOCUMENT | 48-58 |
| ANNEXURE-3 | FAST TRACK PROFORMA CLEARANCE BY CWC | 59-61 |
| ANNEXURE-4 | ORGANIZATION CHART | 62-64 |
| ANNEXURE-5 | U.P. GOVERNMENT ORDER REGARDING COST APPROVAL OF THE PROJECT | 65-68 |
| ANNEXURE-6 | TEMPLATE OF MoWR, RD & GR FOR CA CALCULATION | 69 |

PART- I

EXECUTIVE SUMMARY

PART-I

EXECUTIVE SUMMARY

1.0 PROJECT IN BRIEF

The Saryu Nahar Pariyojana was originally conceived as Left Bank Ghaghara Canal project in the year 1974 to irrigate 267.00 Th ha in the districts of Bahraich and Gonda. It was reformulated in 1980 by changing and enlarging its scope and was renamed as Saryu Nahar Pariyojana. The project interlinks 5 rivers i.e. Ghaghra, Saryu, Rapti, Banganga and Rohini in the Ghaghra basin. In this project 360 cumecs of water is transferred from Girija barrage on river Ghaghra to Saryu barrage on river Saryu through Saryu Link Channel (SLC). Saryu Main Canal (SMC), offtakes from the left bank of Saryu barrage and feed Rapti Link Channel (RLC), which offtakes at 34.7 Km of SMC that transfers 95 cumecs of water from the SMC to the Rapti barrage on river Rapti. Rapti Main Canal (RMC) with designed capacity of 95 cumecs at its head and 126.45 km in length offtakes from Rapti barrage and finally joins the right bank of Banganga river at upstream of existing Banganga Barrage. Campierganj Branch with designed capacity of 55.64 cumecs at its head and 62.107 km length, offtakes from left bank of Banganga River and finally outfall in Rohin River.

The Gross Command Area (GCA) under entire Saryu Nahar Pariyojna is 16.0 Lakhs Ha while the Culturable Command Area (CCA) is 11.29 Lakh Ha. The Ultimate Irrigation Potential of the whole project is 14.04 Lakh ha. The intensity of Irrigation is therefore 124%.

The project was included under AIBP in the year 1996-97 and remained under AIBP till the year 2011-12. The AIBP component of the project was declared to be completed in the Year 2012 with IP creation of 9.31 Lakh ha under AIBP.

After declaration of completion of AIBP components, the balance works of the project were included under the National Projects scheme in 2012 with an estimated cost of Rs. 3011.53 Cr with the targeted creation of Irrigation Potential of 4.73 lakh Ha (total 14.04 lakh ha – 9.31 lakh ha. created upto phase-II under AIBP) with CCA of 4.047 Lakh Ha. This included works under

phase-III (Rapti Main Canal and its distributaries) and remaining works under phase-II.

At present, the total CCA that was proposed to be covered under NP has been reduced to 3.337 Lakh ha from 4.047 lakh ha, though the proposed IP has been kept unchanged as 4.73 Lakh ha.

A line diagram as well as a map showing the overview of the project including the headworks, canal systems and their command areas are placed at **Figure-1** and **Figure-2** respectively and layout diagram of Campierganj system at **Figure-3** in **Part-III** of this report.

The Salient Features of the project are given in **Annexure-1**.

2.0 PHYSICAL AND FINANCIAL PROGRESS

The physical progress of the National Project Part up to the period ending January, 2020 is reported more than 75% whereas the financial progress for the year 2019-2020 up to 31st January, 2020 is reported as Rs. 1044.03 crore. Total expenditure done on the project till January end is Rs. 4743.61 crore out of the total estimated cost of Rs. 5803.61 Crore (nearly 81.74%).

Amount in Rs. Crore

| Table-1: Cost of NP components, Expenditure Incurred and Balance Cost | | | | | |
|---|--|---|--------------|---|-------------------------------------|
| Sl. No. | Year of Inclusion under National Project | Estimated Cost of works as approved in 2017 | | Expenditure incurred up to 01/2020 under NP | Balance cost of NP as on 01.02.2020 |
| | | Whole Project | NP component | | |
| 1 | 2 | 3 | 4 | 5 | 6 |
| 1 | 2012-13 | 9802.6750 | 5803.61 | 4743.61 | 1060 |

3.0 ISSUES IN FOCUS

- i. Substantial progress has been made in the project and construction work in full swing. However, the target date of completion i.e. December, 2019 has already been passed. Considering the bottlenecks of the project, the Project Authorities need to maintain the pace of construction works to complete the project as early as possible.
- ii. Though a commendable progress has been achieved in land acquisition front, as per the physical progress reported of the

project by 31st January, 2020 about 248.89Ha of land are yet to be acquired. Therefore, top priority needs to be given to acquire balance land to complete the project in time.

- iii. The balance land requirement in gaps at the start of the year, was reported as 39.745 ha. There are 43 distributaries and minors still affected by these gaps. Hence same impetus needs to be maintained for acquiring balance land.
- iv. There are 4 railway crossings in the project. No physical work has started at these crossings. Efforts need to be made to expedite the work on these crossings. Modify / Update, if needed from the status in PPT of State Govt.
- v. About 10.45 ha of forest land at various chainages is yet to be acquired. Due priority needs to be given to acquire balance forest land to complete the project in time.
- vi. As per the Programme submitted by State Government, works for 1.44 Lakh Ha CCA has been taken up during 2019-20, however, the work of CAD&WM could not be initiated despite budget provision of Rs. 500 Crore for it in FY 2019-20. Rs. 150 Crore as Central Assistance has also been sanctioned for CAD&WM. As per the latest status received from the CADA officials, Rs. 127.95 Crore against the budget provision of Rs. 500 Crores was released as State Share. The work of Survey and Investigation for 1.44 lakh ha has been reported as completed and the details were uploaded in the web portal of MIS. However, no physical works are undertaken yet. The same needs to be expedited.
- vii. The data on MIS are not being updated regularly. Project Authorities need to ensure feeding of up to date data in MIS system on regular basis including employment generation.
- viii. Compliance of CWC observations on Hydrology, Irrigation Planning, etc. as mentioned in FTPC dated 17.01.2018 needs to be expedited.

4.0 ASSESSMENT OF THE PROJECT

The target date for completion of the project earlier was December, 2019, which has already been passed. As per the

assessment made by the project authorities during the visit, it was informed that the project is likely to be completed by June, 2020. However, it was observed during field visit that it may not be possible to complete the project this year (2019-20) and completion of the project is likely to spill over in year 2020-21 and probability date for completion will be somewhere by December, 2020.

After having on the spot assessment of the project, for completing the project by June, 2020 as claimed by the project authorities or even by December, 2020 as per the team visit assessment, the following challenges need to be addressed on priority.

- i. Acquisition of about 248.89 ha of balance land under NP component and remaining land in Gaps.
- ii. Acquisition of forest land in few stretches.
- iii. Construction of Railway Crossings.
- iv. Expediting the pace of work of balance works.
- v. Expediting the work of 62.107 km long Campierganj Branch Canal and its distribution system (Scheme of Campierganj System is shown as **Figure-3** in **Part-III** of this report).
- vi. Expediting the CAD&WM works of the project.
- vii. Formation of WUAs in the command
- viii. Initiating the work of micro-irrigation in the identified command of the project.

* * * * *

PART- II

MONITORING REPORT

PART - II

MONITORING REPORT

CHAPTER-1

PROJECT DETAILS

1.1 PROJECT COMPONENTS AS BEING EXECUTED

The Saryu Nahar Pariyojana, originally conceived as **Left Bank Ghaghara Canal project** in the year 1974 was reformulated in 1980 by changing and enlarging its scope and was renamed as SaryuNaharPariyojna covering nine districts of Uttar Pradesh viz. Bahraich, Shravasti, Gonda, Balrampur, Basti, SantKabir Nagar, Siddhartha Nagar, Maharajganj and Gorakhpur.

The project interlinks 5 rivers i.e. Ghagra, Saryu, Rapti, Banganga and Rohini in the Ghaghra basin. In this project 360 cumecs of water is transferred from Girija barrage on river Ghaghra to Saryu barrage on river Saryu through Saryu Link Channel (SLC) which offtakes from left bank of Girija barrage. Saryu Main Canal (SMC), with a designed carrying capacity of 360cumecs at its head, offtakes from the left bank of Saryu barrage. Several branches and distributaries offtakes from SMC for providing irrigation in the SMC command. Rapti Link Channel (RLC), offtakes at 34.7 Km of SMC that transfers 95cumecs of water from the SMC to the Rapti barrage on river Rapti. Rapti Main Canal (RMC) with designed capacity of 95cumecs at its head and 126.45 km in length offtakes from left bank of Rapti barrage. Several distributaries offtake from RMC to provide irrigation in the RMC command. The RMC finally joins the right bank of BangangaRiver at about 3.0km upstream of Banganga Barrage. Campierganj Branch with designed capacity of 55.64 cumecs at its head and 62.107 km length, offtakes from left bank of Banganga River and finally outfall in Rohin River.

Gross Command Area (GCA) under entire SaryuNaharPariyojna is 16.0 Lakhs Ha while the Culturable Command Area (CCA) is 11.29 Lakh Ha. The Ultimate Irrigation Potential of the whole project is 14.04 Lakh ha with Irrigation intensity of 124%.

Implementation of this project has been done in three phases. Two phases have been completed and the 3rd Phase is being implemented at present. In third phase, balance works of Saryu System and new works in Rapti System with total IP of 4.73 lakh ha are covered which are being funded under National Project Scheme of PMKSY.

The main components for this phase of the project are:

- **Saryu Link Channel**-47.135 km long, 360 Cumecs discharge, connecting Ghaghra Barrage to Saryu Barrage.
- **Saryu Main Canal**- 63.125 km long and 360 Cumec capacities. It provides irrigation facility in Ghaghara–Rapti Doab Area.
- **Rapti Link Channel**- Connecting Saryu Barrage to Rapti Barrage, 21.400 km long and 95 Cumecs capacity.
- **Rapti Main Canal** - 125.682 km long and 95 Cumecs capacity to irrigate trans-Rapti region between Rapti and Rohini rivers.
- **Campierganj Branch** -62.106 km long to Irrigate Area between Banganga & Rohini River.

1.2 INCLUSION OF PROJECT UNDER NATIONAL PROJECT SCHEME

The project was included for funding under AIBP scheme in year 1996-97 with estimated cost of Rs. 2756.16 Cr (PL 1998 in 72nd TAC). The cost was further revised to Rs. 7270.32 Cr (PL 2008 in 2010 – 103rd TAC). It remained under AIBP till the year 2011-12 and the project was declared complete in the Year 2012 with IP creation of 9.31 Lakh ha.

For balanced work of the project, the Cabinet Committee on Infrastructure gave its approval for inclusion of the SaryuNaharPariyojna under National Project on 03.08.2012 for works amounting Rs. 3238.33 crore with target date of completion as March 2016.

Subsequently, a Memorandum of Understanding (MoU) was signed between the Ministry of Water Resources, Government of India and Government of the Uttar Pradesh in Dec, 2012 for

inclusion of the project under National Projects of Government of India. As per the MoU-2012, the balance cost of the project was finalized as Rs. 3011.5384 crores with creation of Irrigation Potential of 4.73 Lakh ha (14.04 Lakh ha – 9.31 Lakh ha.). Out of 4.73 Lakh ha of IP, 3.27 Lakh ha is to be created in the command of Rapti Main Canal and remaining 1.46 Lakh ha in the command of Saryu Canal System.

Latest revision of the project was done in January, 2017. The details of the revised project components as being executed at present under National Project via-a-vis as per MOU signed in 12/2012 are given as under:

| Table-2: Details as per MoU-12/2012 & as per Revised Project | | | |
|--|----------------------------------|------------------------|------------------------|
| Sl. No. | Item of Work | Quantity as per | |
| | | MoU-2012 | Revised project |
| 1. | B-Land (Ha) | 9443.48 | 2830.90 |
| 2. | Headworks | 02 Nos. | 16.5 km |
| 3. | Main Canal & Branches | | |
| | Earthwork (Km) | 125.85 | 188.55 |
| | Pucca Works (Nos.) | 187 | 311 |
| | Lining (Km) | 2.39 | 2.39 |
| 4. | Dys and Minors | | |
| | Earthwork (Km) | 3544.86 | 1103.71 |
| | Pucca Works (Nos.) | 3773 | 2099 |
| | Lining (Km) | 12.36 | 10.36 |
| 5. | Escape Channel | | |
| | Earthwork (Km) | 22.45 | 22.02 |
| | Pucca Works (Nos.) | 24 | 13 |
| 6. | Drains | | |
| | Earthwork (Km) | 5492.74 | 199.00 |
| | Pucca Works (Nos.) | 4506 | 119 |
| 7. | V-Water Courses (Th Ha.) | 1025 | - |
| | (i) Outlets (Nos.) | - | 17639 |
| | (ii) Wells (Nos.) | - | 942 |
| 8. | Miscellaneous* | - | - |
| 9. | Irrigation Potential (Th Ha) | 473 | 473 |
| *Miscellaneous includes Sharda Garden, A-Preliminary, K-Buildings, M-Plantation, O-Miscellaneous, P-Maintenance, Q-Equipments, R-Communications. | | | |

1.3 Different Phases of Project Implementation

As per the document prepared for supporting the EFC proposal (**Annexure-2**) for inclusion of Saryu Nahar Pariyojna under

National Project, the project is being implemented in three phases i.e. Phase-I, Phase-II and Phase-III.

Phase-I: Phase-I of the work was completed in 1997 for a cost of Rs 298.38 Crores. The various works undertaken under Phase-I are as follows:-

- Headworks
 - Head Regulator of Saryu Link Channel
 - Saryu Barrage
 - Rapti Barrage
 - Head of Utraula Pump Canal
 - Head of Dumariyaganj Pump canal
- Main Canal and Branches
 - Saryu Link Canal / Channel
 - Saryu Main Canal
 - Imamganj Branch
- Distribution System
 - Saryu Main Canal systems
 - Imamganj Branch systems
- Pucca Works of Main canal
 - Cross Drainage Works / Syphon for Saryu Link Canal
 - Cross Drainage Works / Syphon for Saryu Main Canal
- Pucca Works of Distributaries
 - Pucca Works of Saryu Canal Systems
 - Pucca Works of Imamganj Branch System

Phase-II:-

Phase-II of the project was included under AIBP in the year 1996-97. The estimated cost of AIBP components was Rs. 5855.55 crores (at 2008 PL). The details of the works under Phase-II from 1997 to 2013 are as follows. The cost incurred up to its completion was Rs. 2932.73 crores

- Headworks
 - Pump House Ayodhya Pump Canal
 - Pump House Gola Pump Canal
- Main Canal and Branches

- Basti Branch
 - Gonda Branch
 - Bansi Branch
 - Tarabganj Branch
 - Itiyathoke Branch
 - Mankapur Branch*
 - Khalilabad Branch
- Distribution & Minor System
 - Basti Branch Dy& Minor System
 - Gonda Branch Dy& Minor System*
 - Bansi Branch Dy& Minor System*
 - Tarabganj Branch Dy& Minor System
 - Itiyathoke Branch Dy& Minor System*
 - Mankapur Branch Dy& Minor System*
 - Khalilabad Branch Dy& Minor System*
 - Pucca Works of Above Branch, Dy and Minors

Phase-III:

As per the EFC document (**Annexure-2**), balance works of Phase-II (marked as *) will continue in Phase – III also. The main components of works under Phase – III are:

- (a) Two barrages i.e. Saryu Barrage and Rapti Barrage;
- (b) Four main canals i.e. Saryu Link Channel (SLC), Saryu Main Canal (SMC), Rapti Link Channel (RLC) and Rapti Main Canal (RMC);
- (c) Ten Branch Canals; and
- (d) Four pump canals i.e. Utraula Pump Canal, Dumariyaganj Pump Canal, Ayodhya Pump Canal and Gola Pump Canal.

CHAPTER-2

PROJECT IMPLEMENTATION STATUS

2.1 CHANGE IN SCOPE:

There has been a reduction in CCA to the tune of 71,000 ha. At inception of the project, 4.73 Lakh ha of IP was proposed to be created under National Project (NP) for 4.047 Lakh ha CCA. However, in the revised project, total CCA covered under NP has been reduced to 3.337 Lakh ha from 4.047 lakh ha, though the proposed IP has been kept unchanged as 4.73 Lakh ha.

In view of the above change in scope, CWC, Lucknow vide letter dated 18.01.2017 requested the State Government to prepare a revised DPR of the project in accordance to the extant Guidelines of MoWR, RD & GR and submit it to CWC for examination and further necessary action.

A meeting was held in Prime Minister's office on 23.12.2018 which was chaired by Principal Secretary to PM and it was decided that the approvals to the revised DPRs/cost estimates of SaryuNahar shall be given by January 15th, 2018 and the concerned State Govt. officials have to work in close coordination with CWC in this regard.

UP I&WRD vide its letter dated 04.01.2018 submitted the revised DPR of the project to CWC (Headquarters), New Delhi on 8th January, 2018. A presentation on revised DPR of SaryuNahar Project was made on 12.01.2018 in CWC (HQ) to discuss the issues pertaining to revised DPR with concerned specialized directorates of CWC. During the presentation it was decided that fast track proforma clearance may be accorded to the project. Subsequently, Fast Track Proforma was submitted by the Project Authorities to CWC Lucknow on 16.01.2018 which was examined and forwarded to CWC (HQ) on 17.01.2018.

Approval of Fast track proforma clearance to the project has been accorded by CWC (HQ) vide their letter dated 19.01.2018 under certain conditions which include satisfactory compliance of CWC observations on Hydrology, Irrigation Planning, etc. (copy enclosed as **Annexure-3**).

2.2 COST REVISIONS

The cost of the project has been revised from time to time. The year-wise cost revisions of the project are as under:-

| Table-3: Cost Revisions of the Project | | | | |
|--|-----------------------|-----------------------------|-------------|---|
| Sl. No. | Year of cost Revision | Revised Cost (in Rs. Crore) | Price Level | Remarks |
| 1. | 1978 | 76.68 | 1974 | The original project i.e. Left Bank Ghaghara Canal project was sanctioned by the Planning Commission in April 1978 |
| 2. | 1980 | - | - | The project was reformulated in 1980 by changing and enlarging its scope and was renamed as SaryuNaharPariyojana. |
| 3. | 1982 | 299.20 | 1978 | - |
| 4. | 1985 | 696.00 | 1985 | - |
| 5. | 1992 | 1256 | 1992 | - |
| 6. | 2000 | 2756.16 | 1998 | The reformulated project i.e. SaryuNaharPariyojana was accepted by Central Water Commission in 72nd TAC Meeting held on 20.1.2000. |
| 7. | 2010 | 7270.32 | 2008 | Project was found acceptable by Central Water Commission in 103 rd meeting of TAC held on 11.3.2010. The Investment Clearance to the project was issued by the Planning Commission in April 2010 for Rs. 7270.32 crores. |
| 8. | 2018 | 9802.67 | 2016 | This cost of the whole project is based on latest EFC of the project by the State Government. The cost of National Project (NP) component is 5803.61 Crores. Fast Track Proforma Clearance accorded by CWC on 17.01.2018. |

2.3 ORGANIZATIONAL SET UP FOR THE PROJECT

The organizational arrangements put in place for project implementation by the State of UP for this project are shown in **Annexure-4**. At the top project is managed by the Chief Engineer-I (East) at Gorakhpur who is assisted by two Level-II Chief Engineers viz; Chief Engineer-II (Saryu-I), Ayodhya and Chief Engineer-II (Saryu-II), Gonda.

The Chief Engineer-II (Saryu-I), Ayodhya is being assisted by 5 Superintending Engineers; who are stationed as: two at Ayodhya, two at Bahraich and one at Gonda. Chief Engineer-II (Saryu-II), Gonda is being assisted by 4 Superintending Engineers; who are stationed as: two at Balrampur, one each at Basti and Gonda. The above two Chief Engineers and 9 Superintending Engineers are being assisted by 41 Executive Engineers.

2.4 CONTRACTUAL ARRANGEMENT

The UP I&WRD has its own bylaws for delegation of powers to officers as per their hierarchy. The existing rules and regulations framed by Irrigation Department for contractual works, arbitration procedure, settlement of claims etc. are applicable in this project. The contracts for execution of works are governed by applicable GFRs, Irrigation Manual of Orders, I.D. Forms 111 & 112 and detailed I.D. Specifications. For any special conditions of contracts, prior approval of the Government is necessary.

The Chief Engineer, Superintending Engineer, Executive Engineer and Assistant Engineer exercise their financial powers for accepting tenders. They have been delegated with the following financial powers in this regard as indicated in **Table 4**.

| Table 4: Financial Powers for accepting Tenders | | |
|---|-------------------------|---|
| Sl. No. | Designation | Financial Powers |
| 1. | Assistant Engineer | Up to Rs 2.00 lakh |
| 2. | Executive Engineer | Up to Rs. 40.00 lakh |
| 3. | Superintending Engineer | Full powers, (for tenders costing above Rs. 1.0 crore, Chief Engineer's approval is required) |
| 4. | Chief Engineer | Full powers |

2.5 QUALITY ASSESSMENT

A quality control organisation has been established under this project. Two Quality Control Divisions; one at Gonda and other at Basti are functioning under the Superintending Engineer, Quality Control Circle, Ayodhya and under overall control of Chief Engineer, Saryu-I, Ayodhya. Field laboratories have been

established at Gonda, Bahraich, Balrampur and Basti under control of Assistant Engineers.

2.6 LAND ACQUISITION, RESETTLEMENT & REHABILITATION

2.6.1 LAND ACQUISITION:

Land requirement after optimization has reduced to 2830.90 ha from the earlier 9443.48 ha. Out of 2830.90 ha, the progress of land acquisition by January, 2020 was reported as 2582.01 ha. Thus, about 248.89 ha of land is reported as balance for acquisition in addition to 39.745 Ha land in the Gaps. The land acquired in the year 2019-20 up to January, 2020 is reported as 431.42ha under NP component. Due priority needs to be given to acquire balance land to complete the project in time.

2.6.2 REHABILITATION& RESETTLEMENT

No R&R issue is involved in the project.

2.7 ENVIRONMENT AND FOREST CLEARANCE

Environmental Clearance has already been obtained in the year 2000. As per the information furnished by UP I&WRD, there is no bottleneck on account of Forest Land clearance. However, it is reported that about 10.45 ha of forest land at various chainages is yet to be acquired. Due priority needs to be given to acquire balance forest land to complete the project in time.

2.8 PROPOSAL UNDER NATIONAL PROJECT AND OPTIMIZATION

As per the MoU-2012 of SNP, balance cost of the project was Rs. 3011.53 Crores to create balance Irrigation Potential of 4.73 Lakh ha. During the project implementation phase, the cost of land had increased tremendously. This had made significant impact on escalation of Project costs.

During project review at CWC, it was viewed that if the project will be allowed to continue in its current form it will become economically unviable. Keeping this in mind, DoWR, RD & GR, MoJS in its meeting held on 27th November, 2015 suggested UP State Govt. to realistically assess the land requirement and optimize project components based on current trends and technical advancements.

The State Government subsequently carried out an optimization exercise to reduce land requirement for Distributaries & Minors. This exercise had subsequently reduced land requirement as is evident from **Table 5**. Physical quantities of NP components and their estimated cost as per the MoU signed in December, 2012 and as per the revised project are presented below:

| Table-5: | | | | | |
|--|----------------------------------|------------------------|------------------------|-----------------------------------|------------------------|
| Physical and Financial Details as per MOU-2012 & Revised Project | | | | | |
| Sl. No. | Item of Work | Quantity as per | | Cost (in Rs. crore) as per | |
| | | MoU-2012 | Revised project | MoU-2012 | Revised project |
| 1. | B-Land (Ha) | 9443.48 | 2830.90 | 684.2862 | 1834.9325 |
| 2. | Headworks | 02 Nos. | 16.5 km | 43.2493 | 112.9331 |
| 3. | Main Canal & Branches | | | | |
| | Earthwork (Km) | 125.85 | 188.55 | 327.797 | 388.8683 |
| | Pucca Works (Nos.) | 187 | 311 | 282.6262 | 2278.8444 |
| | Lining (Km) | 2.39 | 2.39 | 3.8355 | 9.5629 |
| 4. | Dys and Minors | | | | |
| | Earthwork (Km) | 3544.86 | 1103.71 | 329.9475 | 235.6807 |
| | Pucca Works (Nos.) | 3773 | 2099 | 484.6304 | 475.9640 |
| | Lining (Km) | 12.36 | 10.36 | 7.1963 | 34.6641 |
| 5. | Escape Channel | | | | |
| | Earthwork (Km) | 22.45 | 22.02 | 28.5691 | 14.2139 |
| | Pucca Works (Nos.) | 24 | 13 | 25.8840 | 48.8777 |
| 6. | Drains | | | | |
| | Earthwork (Km) | 5492.74 | 199.00 | 133.6691 | 106.2225 |
| | Pucca Works (Nos.) | 4506 | 199 | 117.0754 | 47.9837 |
| 7. | V-Water Courses (Th Ha.) | 1025 | - | 401.3742 | 117.5113 |
| | (i) Outlets (Nos.) | - | 17639 | | |
| | (ii) Wells (Nos.) | - | 942 | | |
| 8. | Miscellaneous* | - | - | 141.3982 | 97.3539 |
| 9. | Irrigation Potential (Th Ha) | 473 | 473 | - | - |
| Total | | | | 3011.5384 | 5803.6130 |
| *Miscellaneous includes Sharda Garden, A-Preliminary, K-Buildings, M-Plantation, O-Miscellaneous, P-Maintenance, Q-Equipments, R-Communications etc. | | | | | |

2.9 LATEST ESTIMATED COST

The earlier approved cost of the whole project was Rs. 7270.32 crore of which cost of NP component was Rs. 3011.5384 crore. As per the Govt. of Uttar Pradesh Order dated 21.12.2017 (**Annexure-5**), latest approved cost of the whole project has been increased

to Rs. 9802.6750 crore which includes cost of NP components as Rs. 5803.61 Crores.

2.10 FAST TRACK PROFORMA CLEARANCE (FTPC) OF THE PROJECT

Project was found acceptable by Central Water Commission in 103rd meeting of TAC held on 11.3.2010. The Investment Clearance to the project was issued by the Planning Commission in April 2010 for Rs. 7270.32 crores. Conditional Fast Track Proforma Clearance to the project has been accorded by CWC vide their letter dated 19.01.2018 (**Annexure-4**) for total project cost of 9802.67 crores in which the cost of NP component is 5803.61 Crores.

2.11 EXTERNAL ASSISTANCE / CENTRAL ASSISTANCE

At present, the project is not receiving any External Assistance other than Central Assistance. However, for the part of State Share MoA with NABARD has been signed on 05.01.2018.

The project was included under National Project Scheme in December, 2012. Central Assistance (CA) released up to 31.01.2020 to the project is Rs.1884.885crore. Year-wise releases of CA are given as under:

| Table-6: Year-wise releases of Central Assistance | | |
|---|---|------------------------------------|
| Year | Date of Release | Amount of CA Released (Rs. Crores) |
| 2012-13 | 22.03.2013 | 67.9800 |
| 2013-14 | 08.11.2013 | 380.7500 |
| 2014-15 | 20.10.2014 | 210.8550 |
| 2015-16 | 26.02.2016 | 500.0000 |
| 2016-17 | 29.03.2017 | 62.0000 |
| 2017-18 | - | Not demanded by State |
| 2018-19 | 20.03.2019 | 305.000 |
| 2019-20 | 18.12.2019 (1 st Instalment) | 358.30 |
| Total | | 1884.885 |

As per decisions taken by the Cabinet, only 20% cost escalation on approved cost as on March, 2012 is to be considered for CA calculation, therefore, cost of works after 20% cost escalation on Rs.3011.5384 crore (cost of works at the time of inclusion under NP in December, 2012) comes out to be Rs. 3613.8461 crore.

As per the template furnished by the DoWR, RD & GR, MoJS, total admissible CA as on 01.04.2016 comes out to Rs. **1228.5843 crore. (Annexure-6)**. Rs. 62.00 Crore was released during 2016-17 and balance CA as on 01.04.2017 works out to be Rs. 1166.5843 crore.

During Year 2017-18 the State Government did not demand Central Assistance. CA released during 2018-19 was Rs. 305.00 Crore. Thus, balance CA as on 01.04.2019 was Rs. 861.57 crore. The 1st instalment CA amounting to Rs. 358.30 crore in 2019-20 was released vide Ministry of Jal Shakti, DoWR, RD&GR Letter No. 31/2/2013-PR/UP/SaryuNaharPariyojana of National Project /5228-48 dated 18/12/2019. Based on this, the balance admissible CA as on date is as per details given in **Table 7**.

Amount in Rs. Crore

| Table-7: Balance Central Assistance | | | | |
|--|---|----------------------------|---|-------------------|
| Sl. No. | Total balance CA to be released as on 01.04.2019 | Balance CA releases | | Balance CA |
| | | Year | CA | |
| 1. | 861.57 | 2019-20 | 358.30 (50% of total CA released as 1 st instalment) | 503.27* |
| <i>*The proposal for release of 2nd instalment of CA amounting to Rs. 358.325 crore for FY 2019-20 was sent to the Ministry in February, 2020. After the Monitoring visit (16-18 February, 2020), the 2nd instalment of CA amounting to Rs. 358.30 crore was sanctioned by the Ministry vide DoWR, RD & GR Letter no. 31/2/2013-PR/UP/SaryuNaharPariyojana of National Project /20/595-618 dated 12/03/2020. Thus balance CA for next year (2020-21) will be Rs. 144.97 Crore.</i> | | | | |

CHAPTER-3

PROJECT IMPLEMENTATION PROGRESS

3.1 PHYSICAL AND FINANCIAL PROGRESS OF DIFFERENT COMPONENTS OF THE PROJECT

The physical and financial progress of the project up to the period ending February, 2020 is reported as under:

Amount in Rs. Crore

| S. No. | Item of Works (unit) | Physical Progress | | | | Financial Progress (Rs. In Crores) | | | |
|--------------|-------------------------|-------------------------------------|---------------------------------|-----------------------------------|---|------------------------------------|----------------------------------|------------------------------------|---|
| | | Revised estimated Quantities (FTFC) | Physical Progress as on 03/2019 | Physical Progress in year 2019-20 | Total cumulative Progress as on 02/2020 | Revised estimated Cost (FTFC) | Financial Progress as on 03/2019 | Financial Progress in year 2019-20 | Total cumulative Progress as on 02/2020 |
| 1 | 2 | 3 | 4 | 5 | 6 | 7 | 8 | 9 | 10 |
| 1. | B-Land (Ha) | 2830.90 | 2150.59 | 506.92 | 2657.51 | 1848.22 | 1513.16 | 761.77 | 2274.93 |
| 2. | Head works (km.) | 16.50 | 2.60 | 0 | 2.60 | 109.43 | 44.47 | 8.57 | 53.04 |
| 3. | Main Canal & Branches | | | | | | | | |
| | (i) Earth Work (km.) | 188.382 | 142.00 | 37.25 | 179.25 | 388.87 | 330.16 | 32.48 | 362.64 |
| | (ii) Pucca works (nos.) | 311 | 186 | 18 | 204 | 2278.83 | 1362.37 | 274.03 | 1636.40 |
| | (iii) Lining (km.) | 2.39 | 0 | 0 | 0 | 9.56 | 0 | 0 | 0 |
| 4. | Distributaries & Minors | | | | | | | | |
| | (i) Earth Work (km.) | 1103.71 | 513.90 | 305.15 | 819.05 | 235.68 | 100.26 | 38.032 | 138.292 |
| | (ii) Pucca works (nos.) | 2099 | 922 | 1075 | 1997 | 475.96 | 182.44 | 106.58 | 289.018 |
| | (iii) Lining (km.) | 10.36 | 2.00 | 0 | 2.0 | 34.66 | 3.61 | 0 | 3.61 |
| 5. | Escape Channel | | | | | | | | |
| | (i) Earth Work (km.) | 22.02 | 0.68 | 0.10 | 0.78 | 14.22 | 0.71 | 0.018 | 0.728 |
| | (ii) Pucca works (nos.) | 13 | 12 | 1 | 13 | 48.87 | 4.51 | 0.95 | 5.46 |
| 6. | Drains | | | | | | | | |
| | (i) Earth Work (km.) | 199.00 | 54.85 | 1.50 | 56.35 | 96.42 | 7.24 | 0.66 | 7.96 |
| | (ii) Pucca works (nos.) | 119 | 119 | 0 | 119 | 47.98 | 47.98 | 0 | 47.98 |
| 7. | Water courses | | | | | | | | |
| | (i) Outlets (nos.) | 17639 | 3678 | 9097 | 12775 | 117.56 | 20.70 | 1.25 | 21.95 |
| | (ii) Wells (nos.) | 942 | 0 | 0 | 0 | | | | |
| 8. | Miscellaneous | - | - | - | - | 97.35 | 81.97 | 0 | 81.97 |
| Total | | | | | | 5803.61 | 3699.58 | 1224.34 | 4923.92 |

3.2 PROJECT POTENTIAL

3.2.1 YEAR-WISE POTENTIAL CREATION

Total Irrigation Potential (IP) proposed to be created under NP is 4,73,000 ha.

The Year wise Irrigation Potential created in the project up to 09/2019 under National Project is as under:

| Table-9: Year Wise Irrigation Potential Creation | |
|--|------------------------------------|
| Year | Irrigation Potential Created (Ha.) |
| 2012-13 | 5340 |
| 2013-14 | 48620 |
| 2014-15 | 9110 |
| 2015-16 | 63780 |
| 2016-17 | 19010 |
| 2017-18 | 2600 |
| 2018-19 | 22860 |
| 2019-20 (up to Feb, 2019) | 119520 (approx.) |
| Total | 3.13 lakh ha |

3.2.2 DISTRICT WISE IRRIGATION POTENTIAL

| Table-10: District-Wise Irrigation Potential | | | |
|--|----------------------|---|--|
| Sl. No. | Districts Benefitted | Ultimate Potential in the District (Lakh ha.) | Ultimate Potential of the Project (Lakh ha.) |
| 1 | Bahraich | 0.13 | 4.73 |
| 2 | Basti | 0.31 | |
| 3 | Gorakhpur | 0.50 | |
| 4 | Gonda | 0.32 | |
| 5 | Shravasti | 0.33 | |
| 6 | Balrampur | 1.39 | |
| 7 | Sidharth Nagar | 1.34 | |
| 8 | SantKabir Nagar | 0.09 | |
| 9 | Maharajganj | 0.32 | |

3.3 FINANCIAL PROGRAMME AND PROGRESS

3.3.1 Financial programme of Rs1750.00 Crore has been submitted by the State Government for FY 2019-20. Rs. 1292.00 crore has been released and Rs. 981.5 crore has been utilized by the State government by December, 2019.

3.3.2 YEAR-WISE EXPENDITURE

The Year wise expenditure incurred in the project after inclusion of the project under National Project is as under:

| Table-11: Year Wise Expenditure | |
|---------------------------------|-----------------------------------|
| Year | Expenditure Incurred (Rs. Crores) |
| 2012-13 | 8.3927 |
| 2013-14 | 499.7022* |
| 2014-15 | 623.00* |
| 2015-16 | 834.00 |
| 2016-17 | 201.2639 |
| 2017-18 | 571.23 |
| 2018-19 | 962.00 |
| 2019-20(by 01/2020) | 1044.03 |
| Total | 4743.61 |

3.4 FINANCIAL MANAGEMENT

| Table-12: Financial Management | | |
|--------------------------------|---|---------------------|
| (i) | Are the plan funds as provided in the annual plans being matched by budget grants? | No. (General trend) |
| (ii) | Are budget grants as approved being received in the project well in time? | No. (General trend) |
| (iii) | Does a system of issuing letter of credit exist? If so at what periodicity? Is the distribution of annual budget within the year adjusted to the work plan? Are LOCs being received timely? | No. (General trend) |

| | | |
|------|---|--|
| (iv) | After considering the level of financing, the balance cost and the likely escalation of cost, what approximate period in your opinion will be required to complete the project? | No exact period can be specified, but it appears to be certain that the completion of the project will spill over in year 2020-21. |
|------|---|--|

3.5 MONITORING OF PROJECT AT STATE /PROJECT LEVEL

At state level the project is being monitored under the overall supervision of E-in-C (DP). There are exclusively two Monitoring divisions to monitor the different components of the project works.

It has been advised to the State Authorities that weekly Progress Report for review of status through video conferencing by Chairman, CWC may be prepared and send to CWC, Lucknow on regular basis. Also, Quarterly Progress Reports may be prepared for the progress of different components of the project and send to CWC, Lucknow on regular basis.

CHAPTER-4

OBSERVATIONS/ SUGGESTIONS BASED ON SITE VISIT

4.1 OBSERVATIONS/SUGGESTIONS

4.1.1 Sites visited during Monitoring visit

CWC team visited the project from 18th to 20th February, 2020 during which the following sites were seen.

- a) Campierganj branch canal and Pharenda Distributary.
- b) Various structures on Campierganjbranch canal & its Head regulator.
- c) Rapti Main Canal and various structures on Rapti Main Canal.
- d) Rapti Link Channel.

The photographs of visited sites are appended in **Part-IV: Photographs** section of this report.

4.1.2 OBSERVATIONS BASED ON THE VISIT UNDERTAKEN

Day 1 (18.02.2020)

A. Campierganj Tail and Pharenda Distributary:

The Campierganj tail and works of the D.R.B. at the tail of Campierganj branch canal at Km. 61.680 of Rapti Canal system in district Maharajganj was inspected. It was informed by the Executive Engineer (EE) that total canal length of Campierganj branch canal is 62.106 km with discharge of 1965 cusec and Irrigation Potential (IP) of 12894 ha. The tail of canal falls into Rohin River. It connects Banganga River with Rohin River.

The Pharenda distributary and the V.R.B at km 2.200 of the Pharenda Feeder canal was also inspected. It was informed that Pharenda feeder canal has total length of 2.800 km and conveyed water for two distributaries namely Baikunthpur and Pharenda distributary. It was further informed that the discharge of the Pharenda feeder is 636 cusec with Irrigation Potential (IP) of 6178 ha and Sprinkler Irrigation is proposed for the Pharenda distributary. The length of Baikunthpur Distributary was reported as 59.363 km with a discharge of 16.425 cusec.

B. Various structures on Campierganj branch canal & its Head regulator:

The canal syphon at km 39.617 of Campierganj canal currently under construction was visited. The work of construction was inspected. The syphon consisted of 6 barrels for 40.30cumecs of discharge of canal. The discharge of river was informed to be 1520 cumecs. The work was in progress, concreting of 3 barrels was completed at the time of the visit. Two concrete cubes were also tested at the field laboratory for compressive strength of concrete. The D.R.B at Km. 40.042 and earthwork of the off taking Brijamanganj distributary was also inspected. It was informed by the concerned officer of State Govt. that the distributary had total length of 26.200km with discharge of 177 cusec and IP of 8072 ha.

Another drainage syphon at km 32.829 near Matiriagaon was also inspected. The syphon was designed to carry 696 cumecs discharge of River through 15 barrels of 3m x 3.5m size. The pace of work was observed to be better than that during first monitoring visit in October, 2019. It was instructed that the same pace be maintained and ensure that the work will get completed before the monsoon season. About the query of completion of the project in current year (i.e. in 2019-20), the Project authorities have admitted that completion of the project is not possible in year 2019-20 and it will spill over in year 2020-21. They have assured for completion of the main canal, branch canals, distributaries and structures by June, 2020. The works on minors, micro-irrigation etc. will start after monsoon season i.e. October, 2020 and will be completed by December, 2020.

Day 2 (19.02.2020)

C. Various structures on Campierganj branch canal & its Head regulator:

On Day 2, remaining length of Campierganj canal and its head regulator was visited. Drainage syphon at km 10.000, P.R.B. at km 8.701, P.R.B at km 8.476 were inspected. The construction work at the head regulator of the Campierganj canal was inspected. The discharge at the head of Campierganj canal was informed to be 55.35 cumecs. Project authorities assured the timely completion of the construction work i.e. by March, 2020.

D. Rapti Main Canal and various structures on Rapti Main Canal:

The work of inlet at tail of Rapti main canal (RMC) which was under construction was inspected. Thereafter, a D.R.B. at km 125.592 was inspected. The work of under construction Railway Bridge at Km. 114.130 of Rapti Main Canal (RMC) was inspected. It was observed that only earth work for Diversion has been carried out by the Railway Department. The project authorities informed that the work order has been issued to the contractor. Project Authorities were instructed to pursue the matter with Railway Department and the contractor for regularly monitoring the progress for timely completion. In addition to resolution of issue at this location, it was also informed that the permission for removal of dead Railway line had been granted.

Thereafter, D.R.B. at km 114.000, Drainage syphon at km 112.130, P.R.B at km 109.604 was inspected. The gap in the hydraulic connectivity of 624 m due to Forest issues was also visited. The work at drainage syphon at km 106.500 was also reviewed. The syphon consisted of 15 barrels for conveying discharge of 965 cumec. The P.R.B. at km 96.813 was also inspected. The work at second railway track at km 96.478 was also inspected along with inspection of drainage syphon at km 96.266 and canal syphon at km 96.169. Thereafter, status of work at canal syphon at km 91.918 and km 89.898 was also inspected. Forest issue at km 88.500 was also visited but the issues are yet to be resolved. It was observed that only 4 trees were present on both side of the road but since the area was demarcated at forest area, forest clearance was required and was still awaited.

The drainage syphon (Bhanwar Syphon) at km 87.200 was also inspected. The Syphon consisted of 39 barrels, out of which 21 barrels had been constructed, however due to conflict with Village Authority the Construction work was stopped midway. The officer informed that the same has been resolved and the construction work will resume soon. However, it was observed that for continuing further construction work the area needed to be dewatered as the water had submerged the constructed syphon. The drainage syphon at km 86.800 and V.R.B. at km 86.760 were also inspected. The day 2 ended with inspection of the

D.R.B. at km 84.808 and Forest issue at km 82.00. The work of drainage syphon at 82.00 was completed however, hydraulic connectivity could not be made owing to non-clearance for the intervening forest area. The concerned officer informed that the talks with the forest department were in progress. It was advised to pursue the matter vigorously for timely completion of the project.

Day 3 (20.02.2020)

E. Rapti Main Canal and various structures on Rapti Main Canal:

The construction work at drainage syphon at Kharjar was visited. The syphon consisted of 81 barrels designed to convey total discharge of 2920 cumec. Another syphon at km 47.1 was inspected consisting of 9 barrels.

F. Rapti Link Chanel and works thereon:

Thereafter, Bhakla Syphon and the Rapti link Channel was also inspected. The work at Bhakla Syphon was nearly completed with concreting of blocks in progress. The concerned officer informed that they were prepared for running the syphon this monsoon. The on-going pitching work of the Rapti link Channel as per the suggestion of the Expert Committee was also inspected. After the field visit, the overall progress of work was observed to be satisfactory, however, the bottlenecks of Land acquisition, Railway and Forest Clearance needed to be pursued vigorously for timely completion.

4.1.3 OTHER OBSERVATIONS IMPORTANT TO THE PROJECT

A. LAND ACQUISITION

Though commendable progress has been achieved in land acquisition front, about 248.89 ha of land is yet to be acquired in addition to 39.745 Ha land in the Gaps. Therefore, due priority needs to be given to acquire balance land to complete the project in time.

B. ACQUISITION OF FOREST LAND

The Forest Land of about 10.45 ha at various chainages is yet to be transferred to Irrigation Department. Project authorities though informed that the formalities for forest department have been completed and forest land transfer to project likely to be materialized soon, yet it seems that process / formalities needs to be expedited in close coordination with State Forest Department.

C. NO PHYSICAL PROGRESS AT RAILWAY CROSSINGS

The work on above railway crossings is almost standstill and no physical progress was seen. Efforts need to be made to expedite work on these crossings for timely completion of the project. Project authorities have informed that they are in regular touch with the concerned Railway authorities and progress will be visible very soon. At one site, on-going work of diversion for railway crossing was also shown to the team.

D. CADWM WORKS

CAD&WM works proposed for Saryu Nahar Pariyojana Phase-III with CCA of 4.8 Lakh ha and estimated cost of 1672.69 Crore was included by the Ministry of Water Resources, RD & GR's CADWM programme in the year 2017-18 vide letter No. 19011/7/2018/CADWM dated 21.03.2018 with completion time of three years (i.e. 2017-18 to 2019-20). As per the Programme submitted by CADA, CAD&WM works for 2.30 Lakh Ha CCA was to be taken up during 2018-19, but they could not initiate any work of CAD&WM due to non-availability of budget provision for it for FY 2018-19.

As per the latest status received from the CADA officials, Rs. 127.95 Crore against the budget provision of Rs. 500 Crores was released as State Share. The work of Survey and Investigation for 1.44 lakh ha has been completed and the details were uploaded in the web portal of MIS. However, no physical works have been undertaken yet.

E. GAPS IN AIBP PORTION OF THE PROJECT

The balanced land requirement in gaps of the existing system (Phase-I) is 39.745 ha out of which the case of land acquisition for 38.529 ha has been submitted to the respective District Magistrates to acquire under Land Acquisition Act. Remaining 1.216 Ha is in the process of acquisition by the irrigation department. There are 43 distributary and minors till date affected by these gaps. Therefore, the land acquisition in gaps needs to be expedited. The Project authorities during visit have informed that land acquisition in gaps is nearly completion stage.

F. DATA FEEDING ON MIS

The data feeding on MIS is not being updated regularly. Project Authorities need to ensure feeding of up to date data in MIS system on regular basis including employment generation.

G. COMPLIANCE REPORT TO CWC OBSERVATIONS IN EARLIER REPORT

Compliance of CWC observations on Hydrology, Irrigation Planning, etc. as mentioned in FTPC dated 17.01.2018 needs to be expedited.

H. FORMATION OF WATER USER ASSOCIATIONS

Process of formation of Water User Associations (WUAs) and their registration need to be expedited so that the WUAs become functional and the command which has already been created under Saryu system of the project may be handed over to the respective WUAs for operation and maintenance.

I. WORKS OF MICRO-IRRIGATION IN IDENTIFIED COMMAND

The works of micro-irrigation in the identified command of the project need to be initiated.

J. FURNISHING OF REQUISITE INFORMATION

Project Authorities were asked to provide requisite information immediately after the visit of CWC officers to enable better project monitoring:

- Concurrent evaluation report of the Project by the third party and Audited Statement of the project for the balance amount for the process of the case for release of 1st instalment of Central Assistance (CA).
- Submission of requisite information on following (as mentioned during previous monitoring visit)
 - Digitized map of the project on A-0 or A-1 size sheet as well as in soft copy showing all the main canals, branch canals, distributaries and minors with their command area in different colours for AIBP part and NP part.
 - Canal-wise details (for NP Portion) of land acquired and balance land as on 31.01.2019 in per the format which is available with the Project Authority.
 - Canal-wise details of Gaps in AIBP and NP portion of the project in the format which is available with the Project Authority. It is to mention that these details are to be prepared exclusively for AIBP portion and Gaps of NP portion must not be mixed with the AIBP Gaps.

PART- III

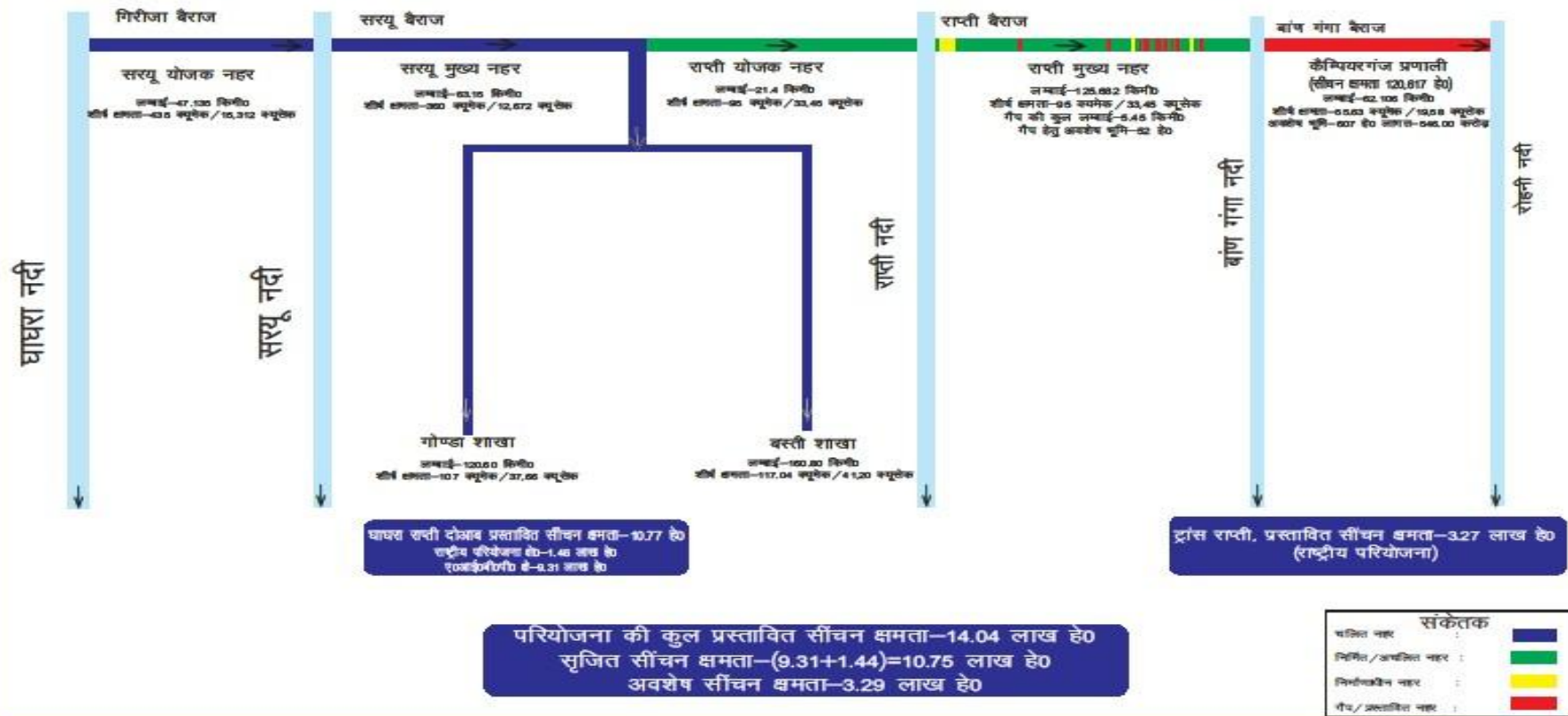
SCHEMATIC DIAGRAMS

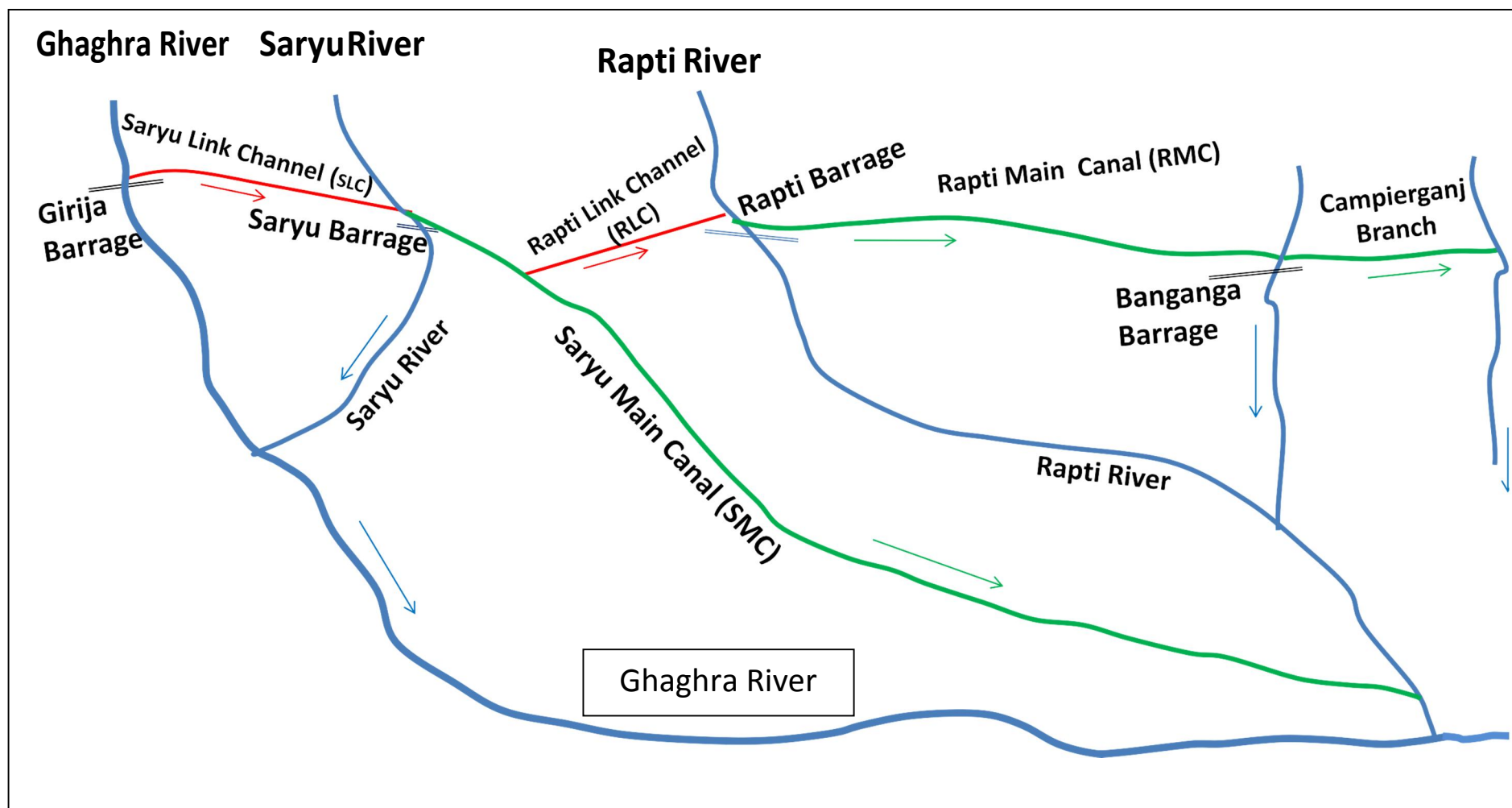
&

INDEX MAP

सरयू नहर परियोजना

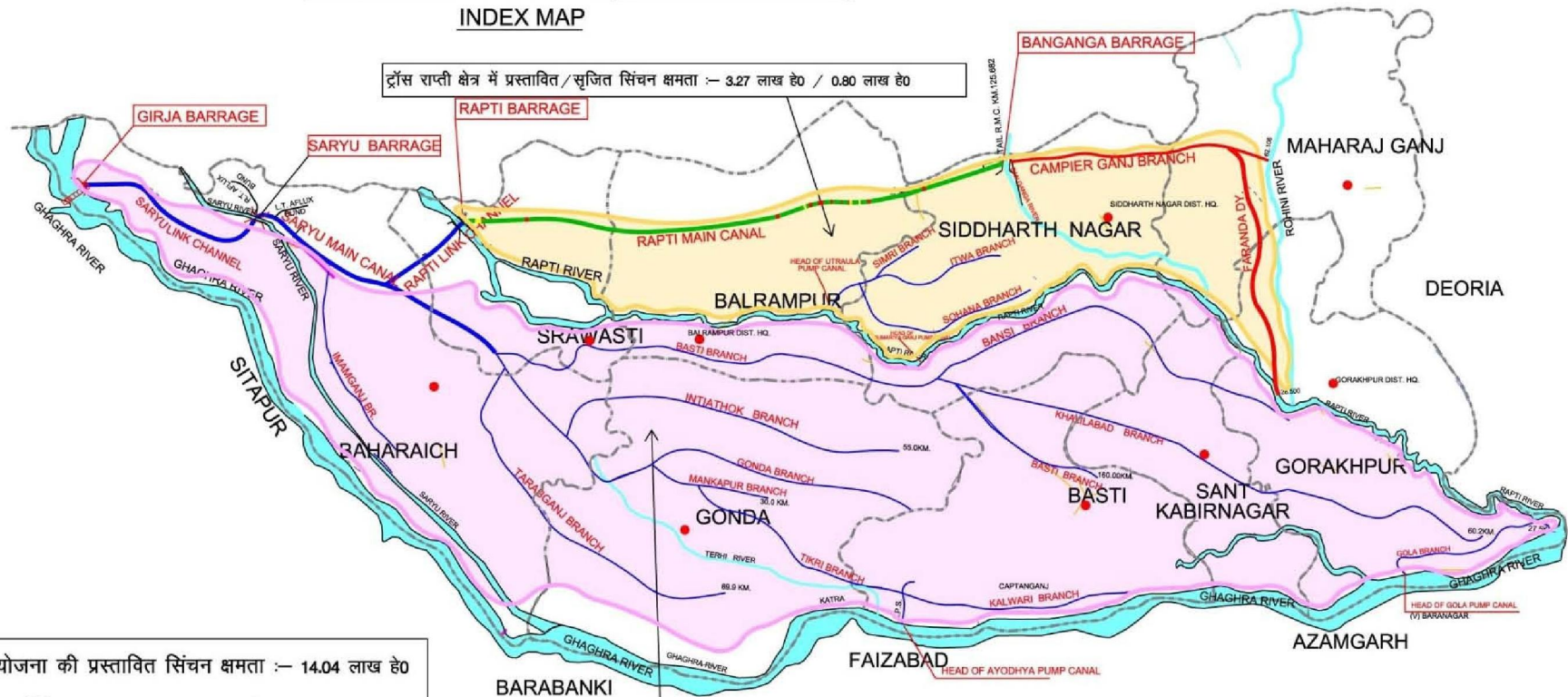
(घाघरा, सरयू, राप्ती, बाण गंगा एवं रोहनी नदियों की योजक परियोजना)





SARYU NAHAR PARIYOJNA(NATIONAL PROJECT) INDEX MAP

द्रौंस राप्ती क्षेत्र में प्रस्तावित/सृजित सिंचन क्षमता :- 3.27 लाख हे० / 0.80 लाख हे०



परियोजना की प्रस्तावित सिंचन क्षमता :- 14.04 लाख हे०
सृजित सिंचन क्षमता :- 10.75 लाख हे०
चलित सिंचन क्षमता :- 6.48 लाख हे०

घाघरा राप्ती दोआब में प्रस्तावित/सृजित सिंचन क्षमता :- 10.77 लाख हे० / 9.96 लाख हे०

घाघरा - राप्ती दोआब क्षेत्र में परियोजना का कमाण्ड
द्रौंस राप्ती क्षेत्र में परियोजना का कमाण्ड

| LEGEND:- | SYMBOL:- |
|-------------------------------|----------|
| 1:- RIVER | |
| 2:- CANAL(RUNNING) | |
| 3:- CANAL (PROPOSED/GAP):- | |
| 4:-CANAL (CONSTRUCTED):- | |
| 5. CANAL UNDER CONSTRUCTION:- | |
| 5:- DISTRICT BOUNDARY:- | |
| 6:-COMMAND BOUNDARY:- | |

PART- IV

PHOTOGRAPHS

Day 1 - 18.02.2020



At Pharenda Feeder at km 2.200



At Canal Syphon at km 39.617 of Campierganj Canal



D.R .B at Km. 40.042



Earthwork of the off taking Brijamanganj distributary



Drainage Syphon at km 32.829

Day 2 - 19.02.2020



PRB at km 8.701



PRB at km 8.476



Head Regulator of Campierganj Branch



Tail of Rapti Main Canal



Downstream works at tail of Rapti Main Canal



Railway crossing issue at km 114.130 of Rapti Main Canal



Railway crossing at km 114.130



D.R.B. at km 114.00



Drainage syphon at km 112.130



Syphon at 112.130



P.R.B. at km 109.604

Drainage syphon km 106.500



Drainage Syphon at km 106.500



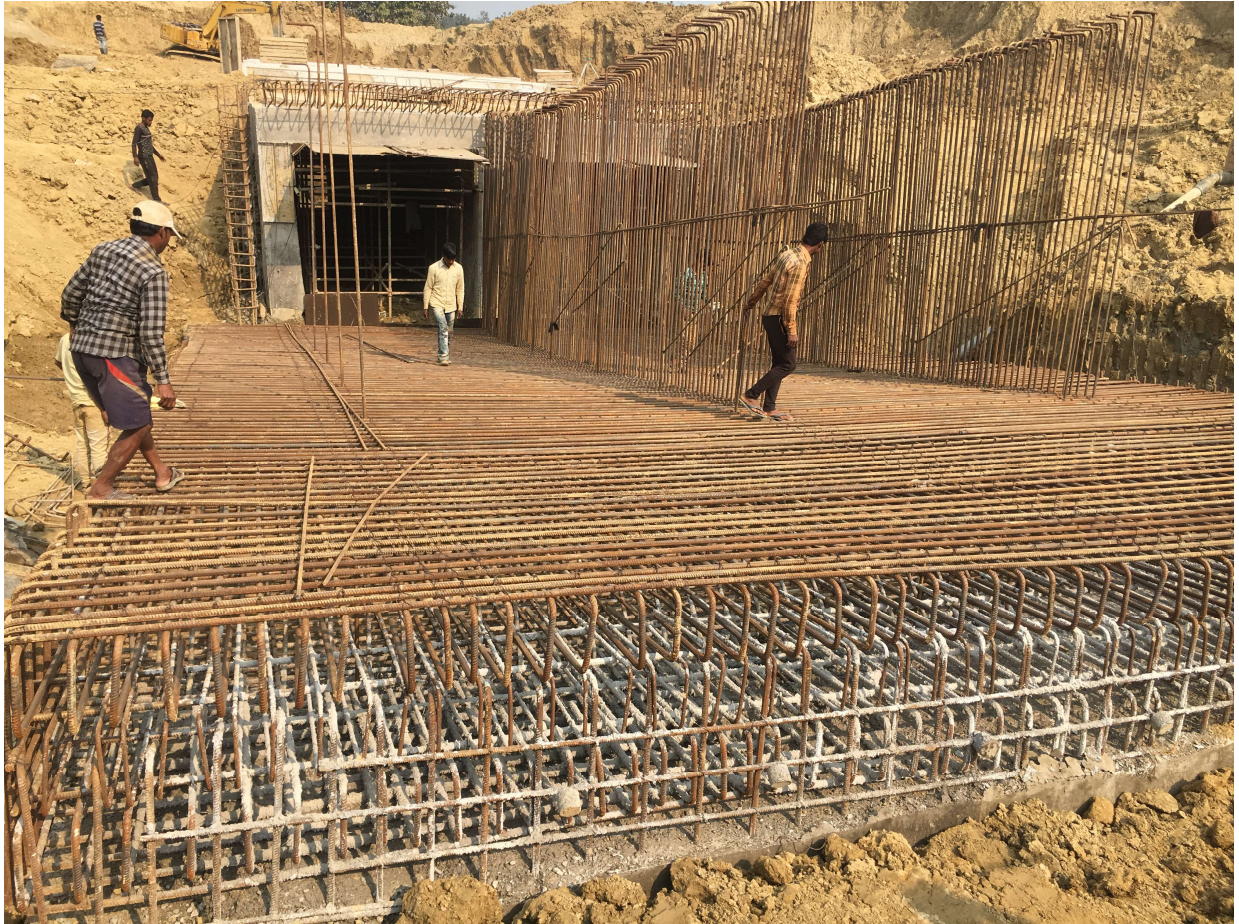
Drainage Syphon at km 106.500



P.R.B. at km 96.813



Railway crossing at km 96.478



Syphon at 91.918



Forest Issue at km 88.500



Bhanwar Syphon at km 87.200

Day 3 - 20.02.2020



Kharjar Syphon



Kharjar Syphon



Kharjar Syphon



Syphon at km 47.1



Bhakla Syphon



Downstream works at Bhakla Syphon

PART- V

ANNEXURES

SALIENT FEATURES OF PROJECT (AS PER REVISED DPR)

- 1.0 Name of Scheme **Saryu Nahar Pariyojana**
- 2.0 Gross Commanded Area (G.C.A.) 16.00 Lac ha.
- 3.0 Culturable commanded Area (C.C.A.) 11.29 Lac ha.
- 4.0 Proposed Irrigation 14.04 lac ha.
- 5.0 Intensity of Irrigation 124.35%
- 6.0 Name of Districts benefitted Bahraich, Balrampur, Shravasti, Gonda, Basti, Siddharthnagar, Sant Kabir Nagar, Gorakhpur & Maharajganj (Total nine districts)
- 7.0 District-wise areas benefitted

Area in Lakh ha.

| Sl. No. | Districts | C.C.A. | Proposed Area |
|--------------|------------------|--------------|---------------|
| 1 | Bahraich | 1.39 | 1.72 |
| 2 | Shravasti | 0.46 | 0.60 |
| 3 | Balrampur | 2.73 | 3.51 |
| 4 | Gonda | 1.48 | 1.79 |
| 5 | Siddharthnagar | 1.85 | 2.16 |
| 6 | Basti | 1.38 | 1.72 |
| 7 | Sant Kabir Nagar | 0.80 | 1.01 |
| 8 | Gorakhpur | 0.88 | 1.08 |
| 9 | Maharajganj | 0.32 | 0.45 |
| Total | | 11.29 | 14.04 |

- 8.0 System-wise C.C.A.

| Sl. No. | Name of the System | C.C.A. (lakh ha) |
|--------------|--------------------|------------------|
| 1. | Saryu System | 8.89 |
| 2. | Rapti System | 2.40 |
| Total | | 11.29 |

Annexure-1 (Sheet 2 of 2)

| | | |
|------|----------------------------|--|
| 9.0 | Barrages | 2 Nos. |
| 10.0 | Pump Canals | 4 Nos. |
| 11.0 | Tubewells | 4617 nos. |
| 12.0 | Source of Supply | (Diversion scheme) River Ghaghra, River Saryu, River Rapti |
| 13.0 | Total Cost of the Project | Rs. 9802.68 Crores |
| 14.0 | Cost per ha of Annual Cost | Rs. 69819.65 per ha. |
| 15.0 | Gross Revenue | Rs. 13696.92 Lakh |
| 16.0 | Net Annual Benefits | Rs. 290333.05 Lakh |
| 17.0 | Annual Costs | Rs. 164446.31 Lakh |
| 18.0 | Benefit - cost Ratio | 1.77 |

- EFC - on Sangu Nahar Ranjore
V.P

The following team of officers helped jointly in preparing the document for supply EFC proposal at the above EFC meeting - in the form of preparation of various tables submitted to Sec (W), Sec (Exp).

C-E (RPO) By
20/12

Dio Man (N)
20/12

20/12

20.12.11
CE Sangu II
Gonda

20.12.11
CE Sangu-1
Faizabad

20/12/11
R. C. V. S.
SE. IXIWSB

Saryu Nahar Pariyojna

Status of Physical/Financial Phase (1+2+3)

Annexure-2
(page 2 of 11)

| Status of Physical/Financial Phase (1+2+3) | | | | | | | | | | | | | | | | | | | | | | | | | | | (page 2 of 11) |
|--|------------------------------|-------|--|-----------|----------------------|-----------|---------------------|-----------|------------------------|----------|---------------------|----------|---------------------|------|------------------------|-----------|---------------------|-----------|---------------------|-----------|------------------------|-----------|---------------------|---------|---------------------|-----------|----------------|
| Sl. no | ITEM OF WORK | UNIT | Provision as per revised Project 03/10 | | PROGRESS UPTO 3/2011 | | BALANCE ON 1/4/2011 | | Phase-I (Annexure-III) | | | | | | Phase-II (Annexure-IV) | | | | | | Phase-III (Annexure-V) | | | | | | |
| | | | | | | | | | Provision | | PROGRESS UPTO 03/11 | | BALANCE AS ON 04/11 | | Provision | | PROGRESS UPTO 03/11 | | BALANCE AS ON 04/11 | | Provision | | PROGRESS UPTO 03/11 | | BALANCE AS ON 04/11 | | |
| | | | QTY. | COST | QTY. | COST | QTY | COST | QTY | COST | QTY | COST | QTY | COST | QTY | COST | QTY | COST | QTY | COST | QTY | COST | QTY | COST | QTY | COST | |
| 1 | 2 | 3 | 4 | 5 | 6 | 7 | 8 | 9 | 10 | 11 | 12 | 13 | 14 | 15 | 16 | 17 | 18 | 19 | 20 | 21 | 22 | 23 | 24 | 25 | 26 | 27 | |
| 1 | B-LAND | HECT. | 31290.35 | 142048.72 | 21773.44 | 65254.89 | 9516.91 | 76793.83 | 990.00 | 980.05 | 990.00 | 980.05 | | | 23163.46 | 77429.75 | 19382.58 | 63612.90 | 3780.88 | 13816.85 | 7136.89 | 63638.92 | 1400.86 | 661.94 | 5736.03 | 62976.98 | |
| 2 | (A) Head Works | NOS. | 7 | 15076.39 | 7 | 9825.53 | 0.00 | 5250.86 | 5 | 396.73 | 5 | 396.73 | | | 2 | 14679.66 | 2 | 9428.80 | 0 | 5250.86 | | | | | | | |
| | MAIN CANAL & BR. PUGCA WORKS | | | | | | | | | | | | | | | | | | | | | | | | | | |
| | (B) Tubewell | NOS. | 3600 | 46774.30 | 100 | 574.30 | 3500.00 | 46200.00 | | | | | | | | | | | | | | | | | | | |
| 3 | MAIN CANAL & BR. PUGCA WORKS | NOS. | 1566 | 66773.62 | 1366 | 37135.53 | 200.00 | 29638.09 | 369 | 703.36 | 369 | 703.36 | | | 100.00 | 574.30 | 100 | 574.30 | 0 | 0.00 | 3500.00 | 46200.00 | | | 3500.00 | 46200.00 | |
| | Earth Work | K.m. | 1150.00 | 54606.03 | 1023.14 | 21480.81 | 126.86 | 33125.22 | 442.00 | 14235.06 | 742.00 | 14235.06 | | | 1050 | 34622.63 | 981 | 34220.23 | 69 | 402.40 | 147 | 31447.63 | 16.00 | 2211.94 | 131.00 | 29235.69 | |
| | Lining | K.m. | 6.79 | 920.00 | 4.40 | 536.45 | 2.39 | 383.55 | | | | | | | 261.84 | 5215.51 | 259.98 | 4270.56 | 1.86 | 944.95 | 146.16 | 35155.46 | 21.16 | 2975.19 | 125.00 | 32180.27 | |
| 4 | DYS & MINORS | NOS. | 12187 | 101453.31 | 8187 | 47494.05 | 4000.00 | 53959.26 | 533.00 | 668.46 | 533.00 | 668.46 | | | 7904.00 | 76440.67 | 7654 | 46825.59 | 250 | 29615.08 | 3750.00 | 24344.18 | | | 3750.00 | 24344.18 | |
| | Earth Work | | Km. | 8240.00 | 52790.85 | 4631.38 | 17992.36 | 3608.62 | 34798.49 | 648.00 | 11815.02 | 648.00 | 11815.02 | | | 5727.00 | 14738.01 | 3983.38 | 6177.34 | 1743.62 | 8560.67 | 1865.00 | 26237.82 | | | 1865.00 | 26237.82 |
| | Lining | | K.m. | 14.36 | 1102.39 | 2.00 | 280.76 | 12.36 | 821.63 | | | | | | | 14.36 | 1102.39 | 2.00 | 280.76 | 12.36 | 821.63 | | | | | | |
| 5 | ESCAPE CHANNEL | NOS. | 81 | 3840.15 | 56 | 901.00 | 25.00 | 2939.15 | | | | | | | 81.00 | 3840.15 | 56 | 901.00 | 25 | 2939.15 | | | | | | | |
| | PUGCA WORKS | | | | | | | | | | | | | | | | | | | | | | | | | | |
| | Earth Work | Km. | 65.80 | 3224.98 | 29.43 | 284.28 | 36.37 | 2940.70 | | | | | | | 59.80 | 2174.95 | 29.43 | 284.28 | 30.37 | 1890.67 | 6.00 | 1050.03 | | | 6.00 | 1050.03 | |
| 6 | DRAINS | NOS. | 7016 | 46538.52 | 2457 | 32539.85 | 4559.00 | 13998.67 | 79.00 | 276.03 | 79.00 | 276.03 | | | 5762.00 | 38391.52 | 2378 | 32263.82 | 3384 | 6127.70 | 1175.00 | 7870.97 | | | 1175.00 | 7870.97 | |
| | PUGCA WORKS | | | | | | | | | | | | | | | | | | | | | | | | | | |
| | Earth Work | Km. | 9250.00 | 23269.26 | 3732.36 | 9304.47 | 5517.64 | 13964.79 | 164.00 | 94.77 | 164.00 | 94.77 | | | 6925.00 | 22429.83 | 3568.36 | 9209.70 | 3356.64 | 13220.13 | 2161.00 | 744.66 | | | 2161.00 | 744.66 | |
| 7 | Sharda Garden | Lac | Job | 5126.20 | | 4078.99 | | 1047.21 | | | | | | | | 5126.20 | | 4078.99 | | 1047.21 | | | | | | | |
| 8 | A-Preliminilry | Lac | Job | 1070.58 | | 442.01 | | 628.57 | | | | | | | | 1070.58 | | 442.01 | | 628.57 | | | | | | | |
| 9 | K-Buildings | Lac | Job | 4633.20 | | 1512.35 | | 3120.85 | 0.00 | 64.94 | | 64.94 | | | | 4633.20 | | 1512.35 | | 3120.85 | | | 38.84 | | 305.20 | | |
| 10 | M-Plantation | Lac | Job | 2123.58 | | 611.83 | | 1511.75 | | | | | | | | 2123.58 | | 611.83 | | 1511.75 | | | 42.69 | | 1942.81 | | |
| 11 | O-Miscellaneous | Lac | Job | 14053.13 | | 7079.59 | | 6973.54 | 0.00 | 304.08 | | 304.08 | | | | 14053.13 | | 7079.59 | | 6973.54 | | | 0.15 | | 1451.36 | | |
| 12 | P-Maintenance | Lac | Job | 2760.25 | | 2263.09 | | 497.16 | 0.00 | 68.78 | | 68.78 | | | | 2760.25 | | 2263.09 | | 497.16 | | | 274.10 | | 137.00 | | |
| 13 | Q-Equipments | Lac | Job | 732.31 | | 732.31 | | 0.00 | 0.00 | 231.54 | | 231.54 | | | | 732.31 | | 732.31 | | 0.00 | | | 250.00 | | 497.16 | | |
| 14 | R-Communications | Lac | Job | 3166.08 | | 1879.89 | | 1286.19 | | | | | | | | 3166.08 | | 1879.89 | | 1286.19 | | | | | | | |
| 15 | V-Water Courses | Th.He | 1200.00 | 40245.29 | 175.00 | 91.30 | 1025.00 | 40153.99 | | | | | | | | 1200.00 | | 40245.29 | | 175.00 | | | | | | | |
| 16 | POTENTIAL | Th.He | 1404.00 | | 918.13 | | 485.87 | | 92.00 | 0.00 | 92.00 | | | | 92.00 | 30855.48 | 175.00 | 91.30 | 745.00 | 30764.18 | 280.00 | 9389.81 | | | 280.00 | 9389.81 | |
| | TOTAL | Lac | | 632329.14 | | 262295.64 | | 370033.50 | 0.00 | 29838.82 | 92.00 | 0.00 | 92.00 | | 985.00 | 0.00 | 826.13 | 0.00 | 158.87 | | 327.00 | | | | 327.00 | 9389.81 | |
| | Less Cost of Tube We | Lac | | 46774.30 | | 574.30 | | 46200.00 | 0.00 | 0.00 | | 0.00 | | 0.00 | 0.00 | 351159.69 | | 225690.13 | | 125469.56 | 0.00 | 251330.63 | | 6766.69 | | 244563.94 | |
| | Balance Cost | | | 585554.84 | | 261721.34 | | 323833.50 | 0.00 | 29838.82 | | 29838.82 | | 0.00 | 0.00 | 351159.69 | | 225690.13 | | 125469.56 | 0.00 | 205130.63 | | 6766.69 | | 198363.94 | |
| No component of Phase-I, Phase-II and Phase-III is shown | | | | | | | | | | | | | | | | | | | | | | | | | | | |

No component of Phase-I, Phase-II and Phase-III in not being repeatitive in inclusion

20-12-11
CE Saryu-I
Faizabad.

20/12/11
AE Saryu-I
Gonda

DETAILS OF WORKS UNDER PHASE-I (Completed in 1997 for cost of Rs. 298.38 Cr.)

A- HEAD WORKS

- 1- Head Regulator of Saryu Link Canal
- 2- Saryu Barrage
- 3- Rapti Barrage
- 4- Head of Utraula Pump Canal
- 5- Head of Dumariyaganj Pump Canal

B- MAIN CANAL AND BRANCHES

- 1- Saryu Link Canal/Channel
- 2- Saryu Main Canal
- 3- Imamganj Branch

C- DISTRUBUTION SYSTEM

- 1 Saryu Main Canal Systems
- 2 Imamganj Branch System

D- PUCCA WORKS OF MAIN CANAL

- 1- Cross Drainage Works/Syphon for Saryu Link Canal
- 2- Cross Drainage Works/Syphon for Saryu Main Canal

E- PUCCA WORKS OF DISTRIBUTORIES

- 1 Pucca Works of Saryu Canal Systems
- 2 Pucca Works Imamganj Branch System

DETAILS OF WORKS UNDER PHASE-II (1997 to 2013)

A- HEAD WORKS

- 1- Pump House Ayodhya Pump Canal
- 2- Pump House Gola Pump Canal

B- MAIN CANAL AND BRANCHES

- 1- Basti Branch#
- 2- Gonda Branch#
- 3- Bansi Branch#
- 4- Tarabganj Branch#
- 5- Itiyathoke Branch#
- 6- Mankapur Branch*#
- 7- Khalilabad Branch

C- DISTRUBUTION & MINOR SYSTEM

- 1- Basti Branch Dy & Minor System
- 2- Gonda Branch Dy & Minor System*
- 3- Bansi Branch Dy & Minor System*
- 4- Tarabganj Branch Dy & Minor System
- 5- Itiyathoke Branch Dy & Minor System*
- 6- Mankapur Branch Dy & Minor System*
- 7- Khalilabad Branch Dy & Minor System*

D- PUCCA WORKS OF ABOVE BRANCH, DY. & MINORS*

* Balance works of cost Rs. approximately 1255.00 crore will continue in Phase-III also.

Some part length of these Canals & Systems has been funded by NABARD

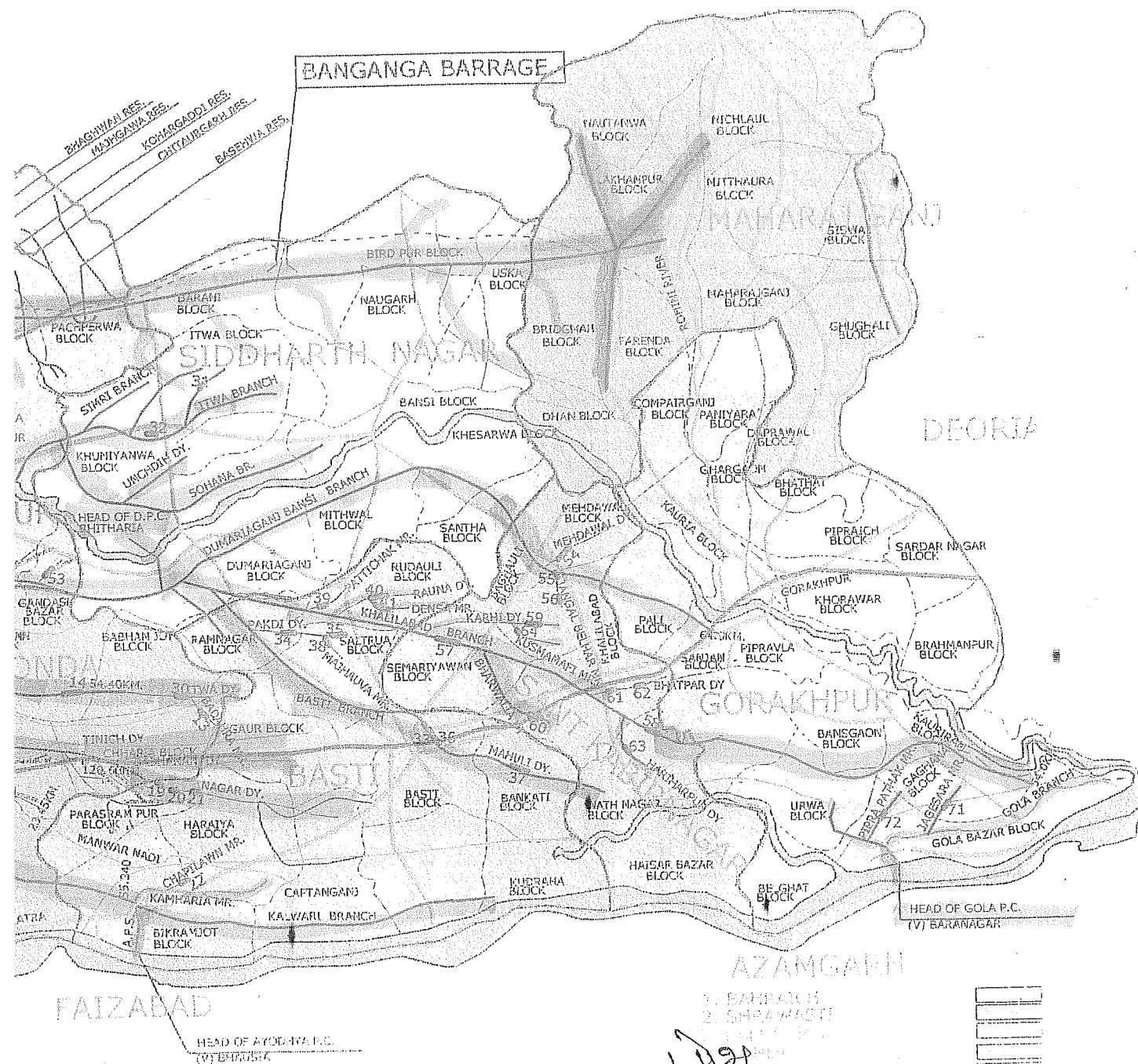
DETAILS OF WORKS UNDER PHASE-III (April, 2011 to March, 2016)

| Sl. No. | Name of Canal | Offtake Point | | C.C.A. of canal | Irrigation Potential | Length of canal |
|---------|-------------------|---------------|------|-----------------|----------------------|-----------------|
| | | Chainage | Bank | | | |
| 1 | 2 | 3 | | 4 | 5 | 6 |
| 1 | Chaubepurva Minor | 13.000 | R | 1000 | 1170.00 | 7.000 |
| 2 | Tendua Minor | 16.000 | R | 1000 | 1170.00 | 7.000 |
| 3 | Barbhawa Minor | 18.200 | R | 1015 | 1188.00 | 7.500 |
| 4 | Badalpur Minor | 20.600 | R | 985 | 1152.00 | 7.000 |
| 5 | Bankatwa Dy. | 22.800 | R | 3900 | 4563.00 | 28.000 |
| 6 | Birpur Minor | 25.700 | R | 975 | 1141.00 | 7.000 |
| 7 | Vishnapur Minor | 28.000 | R | 925 | 1082.00 | 7.000 |
| 8 | Ayodhyapur Minor | 29.200 | R | 1025 | 1199.00 | 7.500 |
| 9 | Luxmanpur Dy. | 31.100 | R | 4675 | 5470.00 | 33.500 |
| 10 | Jokhwa Minor | 34.100 | R | 1250 | 1463.00 | 9.000 |
| 11 | Imaliya Minor | 36.550 | R | 940 | 1100.00 | 7.000 |
| 12 | Sugga Nagar Minor | 38.200 | R | 990 | 1158.00 | 7.000 |
| 13 | Sahjanwa Minor | 40.200 | R | 970 | 1135.00 | 7.000 |
| 14 | Khairman Dy. | 42.100 | R | 4052 | 4741.00 | 29.000 |
| 15 | Sikri Minor | 44.600 | R | 1200 | 1404.00 | 9.000 |
| 16 | Amvapur Minor | 45.600 | R | 1175 | 1375.00 | 8.500 |
| 17 | Motipur Minor | 47.200 | R | 1200 | 1404.00 | 8.500 |
| 18 | Bhujehra Minor | 51.300 | R | 1125 | 1316.00 | 8.000 |
| 19 | Gulra Mafi Minor | 53.800 | R | 940 | 1100.00 | 7.000 |
| 20 | Gulariha Dy. | 54.600 | R | 4000 | 4680.00 | 29.000 |
| 21 | Girgitti Dy. | 54.930 | R | 3420 | 4001.00 | 24.500 |
| 22 | Hisampur Dy. | 55.800 | R | 3200 | 3744.00 | 23.000 |
| 23 | Shankarpur Dy. | 56.250 | R | 920 | 1076.00 | 7.000 |
| 24 | Gopalpur Minor | 58.240 | R | 990 | 1158.00 | 7.500 |
| 25 | Lalankar Dy. | 61.000 | R | 3300 | 3861.00 | 23.500 |
| 26 | Mahadeva Minor | 53.000 | R | 975 | 1141.00 | 7.000 |
| 27 | Beli Dy. | 65.700 | R | 3850 | 4505.00 | 28.000 |
| 28 | Bankatwa Dy. | 67.100 | R | 3850 | 4505.00 | 28.000 |
| 29 | Sonpur Minor | 69.000 | R | 955 | 1117.00 | 7.000 |
| 30 | Patan Dy. | 69.500 | R | 4750 | 5558.00 | 35.000 |
| 31 | Sheetalpur Dy. | 69.962 | R | 3695 | 4323.00 | 27.000 |
| 32 | Lauki Dy. | 73.200 | R | 3750 | 4388.00 | 28.000 |
| 33 | Bhagwanpur Dy. | 74.120 | R | 3725 | 4358.00 | 27.000 |
| 34 | Semri Minor | 75.800 | R | 945 | 1106.00 | 7.000 |
| 35 | Halaura Dy. | 77.600 | R | 3520 | 4118.00 | 26.000 |
| 36 | Prempur Minor | 78.680 | R | 990 | 1158.00 | 8.000 |

| Sl. No. | Name of Canal | Offtake Point | | C.C.A. of canal | Irrigation Potential | Length of canal |
|---------|------------------|---------------|------|-----------------|----------------------|-----------------|
| | | Chainage | Bank | | | |
| 1 | 2 | 3 | | 4 | 5 | 6 |
| 37 | Prempur Dy. | 78.900 | R | 3680 | 4306.00 | 27.000 |
| 38 | Durgapur Minor | 79.300 | R | 970 | 1135.00 | 7.000 |
| 39 | Chaipurwa Dy. | 80.700 | R | 3755 | 4393.00 | 27.000 |
| 40 | Mahuwapur Dy. | 82.017 | R | 3525 | 4124.00 | 26.000 |
| 41 | Thakurapur Minor | 82.400 | R | 3730 | 4364.00 | 27.000 |
| 42 | Jamdhara Dy. | 86.600 | R | 4730 | 5534.00 | 34.000 |
| 43 | Sugaaon Dy. | 88.200 | R | 4740 | 5546.00 | 34.000 |
| 44 | Pachperwa Dy. | 90.300 | R | 3560 | 4165.00 | 26.000 |
| 45 | Shankarpur Dy. | 98.600 | R | 4525 | 5294.00 | 33.000 |
| 46 | Luxminagar Minor | 101.700 | R | 980 | 1147.00 | 7.000 |
| 47 | Triok Nagar Dy. | 102.500 | R | 5050 | 5909.00 | 36.000 |
| 48 | R.M.C. | 0.00-102.50 | R | 10000 | 11700.00 | 102.500 |
| 49 | Baradpur Dy. | 103.200 | R | 9000 | 10530.00 | 65.000 |
| 50 | Nogarh Dy. | 107.000 | R | 12000 | 14040.00 | 86.000 |
| 51 | Uskapur Dy. | 111.200 | R | 14000 | 16380.00 | 100.000 |
| 52 | Brijmanganj Dy. | 114.000 | R | 16025 | 18749.00 | 115.000 |
| 53 | Nautanwa Dy. | 115.000 | L | 22000 | 25740.00 | 157.000 |
| 54 | Lajmanpur Dy. | 117.000 | L | 22500 | 26325.00 | 161.000 |
| 55 | Fareda Dy. | 121.000 | R | 23553 | 27557.00 | 168.000 |
| 56 | Kampiarganj Dy. | 124.200 | R | 24500 | 28665.00 | 175.000 |
| 57 | R.M.C. | 102.50-125.00 | R | 11000 | 12870.00 | 22.500 |
| | TOTAL | | | 280000 | 327600.00 | 1990.000 |

20-12-11
CE Sanyal-I
Fairzaad

20/12/11
CE Sanyal II
Gonda



SE
Sanyu Panigrahy
U.P. Krigation

BEFORE AIBP

A cost of Rs. 298.38 crore works were completed and no liability on behalf of Govt. of India. The Potential created against above expenditure is 0.92 Lac Hect. In above expenditure following works is completed :-

A- HEAD WORKS

- 1- Head Regulator of Saryu Link Canal
- 2- Saryu Barrage
- 3- Rapti Barrage
- 4- Head of Utraula Pump Canal
- 5- Head of Dumariyaganj Pump Canal

B- MAIN CANAL AND BRANCHES

- 1- Saryu Link Canal/Channel
- 2- Saryu Main Canal
- 3- Imamganj Branch

C- DISTRUBUTION SYSTEM

- 1 Saryu Main Canal Systems
- 2 Imamganj Branch System

D- PUCCA WORKS OF MAIN CANAL

- 1- Cross Drainage Works/Syphon for Saryu Link Canal
- 2- Cross Drainage Works/Syphon for Saryu Main Canal

E- PUCCA WORKS OF DISTRIBUTORIES

- 1 Pucca Works of Saryu Canal Systems
- 2 Pucca Works Imamganj Branch System

Year 2000

Approved cost of Saryu Nahar Pariyojna was 2765.16 crore on price level 1998 including Phase-I, II & III to create 14.04 lac hac potential and approved in 72nd TAC conducted on 18 January, 2000.

Yearwise Physisical & Financial Progress as bellow.

| Year | Physical | Financial |
|-----------|---|-----------|
| Upto 2000 | Pump House Gola Pump Canal, Partly length of Gonda Branch, Basti Branch, Itiyathoke Branch, Mankapur Branch, Pucca Works of abvoe branches Dys. & Minors Upto Year 2000 1.88 lac hect. potential created. | 478.57 |
| 2000-01 | Const. of intake of Ayodhya Pump Canal, Partly length of Gonda Branch, Basti Branch, Tarabganj Branch, Itiyathoke Branch, Mankapur Branch, Pucca Works of abvoe branches Dys. & Minors and | 113.53 |

| | | |
|---------|---|--------|
| | 0.27 lac hect. Potential created. | |
| 2001-02 | Const. of Pump House Ayodhya Pump Canal, Partly length of Gonda Branch, Basti Branch, Tarabganj Branch, Itiyathoke Branch, Mankapur Branch, Ayodhya Main Canal, Pucca Works of abvoe branches Dys. & Minors and 0.34 lac hect. Potential created. | 166.33 |
| 2002-03 | Completion of Pump House Ayodhya Pump Canal, Partly length of Gonda Branch, Basti Branch, Tarabganj Branch, Khalilabad Branch, Itiyathoke Branch, Mankapur Branch, Ayodhya Main Canal, Kalwari Branch, Khamariya Dy., Kaisarganj Dy., Fakarpur Dy., Pucca Works of abvoe branches Dys. & Minors and 0.48 lac hect. Potential created. | 204.52 |
| 2003-04 | Partly length of Rapti Link Channel, Gonda Branch, Basti Branch, Tarabganj Branch, Khalilabad Branch, Itiyathoke Branch, Mankapur Branch, Ayodhya Main Canal, Kalwari Branch, Khamariya Dy., Kaisarganj Dy., Fakarpur Dy., Mankapur Branch, Pucca Works of abvoe branches Dys. & Minors and 0.197 lac hect. Potential created. | 185.95 |
| 2004-05 | Partly length of Rapti Link Channel, Gonda Branch, Basti Branch, Tarabganj Branch, Khalilabad Branch, Itiyathoke Branch, Mankapur Branch, Ayodhya Main Canal, Kalwari Branch, Bansi Branch, Sohna Branch Khamariya Dy., Semri Dy., Mankapur Branch, Pucca Works of abvoe branches Dys. & Minors and 0.65 lac hect. Potential created. | 164.57 |
| 2005-06 | Partly length of Rapti Link Channel, Gonda Branch, Basti Branch, Tarabganj Branch, Khalilabad Branch, Itiyathoke Branch, Mankapur Branch, Kalwari Branch, Bansi Branch, Sohna Branch Khamariya Dy., Semri Dy., Mankapur Branch, Jarwal Dy., Chainpur Dy, Farenda Dy., Pucca Works of abvoe branches Dys. & Minors and 0.95 lac hect. Potential created. | 232.59 |
| 2006-07 | Partly length of Rapti Link Channel, Gonda Branch, Basti Branch, Tarabganj Branch, Khalilabad Branch, Itiyathoke Branch, Mankapur Branch, Bansi Branch, Sohna Branch, Khamariya Dy., Semri Dy., Govindpur Dy., Makoliya Dy., Tulsipur Dy., Dadaura Dy., Nagar Dy., Mankapur Branch, Jarwal Dy., Chainpur Dy, Farenda Dy., Pucca Works of abvoe branches & Dys. & Minors and 0.40 lac hect. Potential created. | 279.52 |

MOU was signed at the total cost of Project Rs. 2522.00 Crore details not submitted to MoWR. Expenditure already incurred 1819.80 crore upto March, 2007 and Potential already developed under AIBP 4.25 lac hect., before AIBP 0.92 lac hect. & under NABARD 3.15 lac hect. total created 8.32 lac hect and additional proposed to create 0.80 lac hect. in Rs. 702.00 crore containing balance work of Phase-I, II & Partly Phase-II (ie. Rapti Link Channel and 16 X-drainage works.)

Completion contents progress as below :-

| Year | Physical | Financial |
|---------|--|-----------|
| 2007-08 | Partly length of Rapti Link Channel, Gonda Branch, Basti Branch, Tikri Branch, Khalilabad Branch, Itiyathoke Branch, Mankapur Branch, Banshi Branch, Sohna Branch, Khamariya Dy., Semri Dy., Govindpur Dy., Makoliya Dy., Tulsipur Dy., Dadaura Dy., Nagar Dy., Mankapur Branch, Jarwal Dy., Chainpur Dy, Farenda Dy., Birahimpur Dy., Husainabad Dy., Ahtarampur Dy., Pucca Works of abvoe branches & Dys. & Minors and 0.40 lac hect. Potential created. | 256.99 |
| 2008-09 | Partly length of Escape, Khalilabad Branch, Mankapur Branch, Tikri Branch, Banshi Branch, Makoliya Dy., Dadaura Dy., Nagar Dy., Mankapur Branch, Jarwal Dy., Chainpur Dy, Birahimpur Dy., Husainabad Dy., Ahtarampur Dy., Pucca Works of abvoe branches & Dys. & Minors and 0.335 lac hect. Potential created. | 346.42 |
| 2009-10 | Partly length of Escape, Khalilabad Branch, Tikri Branch, Makoliya Dy., Dadaura Dy., Nagar Dy., Mankapur Branch, Jarwal Dy., Chainpur Dy, Birahimpur Dy., Husainabad Dy., Khantara Dy, Mehdawal Dy., Benipur Dy., Utraula Dy., Chaisar Dy., Janki Nagar Dy., Ahtarampur Dy., Pucca Works of abvoe branches & Dys. & Minors and 0.068 lac hect. Potential created. | 56.02 |
| 2010-11 | Partly length of Escape, Tikri Branch, Jarwal Dy., Chainpur Dy, Birahimpur Dy., Husainabad Dy., Khantara Dy, Mehdawal Dy., Benipur Dy., Utraula Dy., Chaisar Dy., Janki Nagar Dy., Harharpur Dy., Bhatpur Dy., Rauna Dy., Gangrauly Dy, Dhanaipatti Dy., Itwa Branch, Oochdih Dy, Ahtarampur Dy., Pucca Works of abvoe branches & Dys. & Minors and 0.068 lac hect. Potential created. | 143.52 |

Total expenditure of project upto 03/11 is Rs. 2622.95 crore against creation of 9.18 lac hect. potential.

Submission of MOU year 2011-12

Project approved/investment clearance by Planning Commission in April, 2010 for the cost of Rs. 7270.33 Crore in which the cost of work is Rs. 6323.29 crore. Expenditure incurred upto 03/2011 Rs. 2622.95 crores and created 9.18 lac hect. Potential. Balance cost of work Rs. 3700.33 crore including cost of 3500 augmentation tube wells to create 4.86 lac hect. Potential.

For National Project.

Balance cost of the Project after deduction of cost of Tubewells (ie Rs. 3700.33 - 462.00) is Rs. 3238.33 crore.

| | |
|---------------------|----------------------|
| Phase -III | 1983.63 crore |
| Balance of Phase-II | 1254.70 crore |
| Total | 3238.33 crore |

Details are enclosed on Annexure-IV & V

SE IX
Surya Parijajana.



भारत सरकार



**NATIONAL PROJECTS DIRECTORATE
CENTRAL WATER COMMISSION**

2B, 8th Floor (N), Sewa Bhawan,
R.K. Puram Sector-1, New Delhi-110066

राष्ट्रीय परियोजना निदेशालय
केन्द्रीय जल आयोग



Tele/Fax: 011-29583395

Email: np1dte@gmail.com

CWC U. O. No. 3/9/2012/NP-II/Vol- V/ 109-21

Dated: 19 January, 2018

OFFICE MEMORANDUM

Sub: Fast Track Proforma Clearance of Revised Cost Estimate (RCE) in respect of Saryu Nahar Pariyojana (National Project), Uttar Pradesh, Estimated Cost Rs 9802.67 Cr (Cost of components of National Project = Rs 5803.61 Cr) at Price Level 2016 – Reg.

The undersigned is directed to convey the approval of the competent authority that the Saryu Nahar Pariyojana (National Project), Uttar Pradesh, the salient features of which are given as the enclosed Annexure-A, has been considered acceptable with conditions given below for Fast Track Proforma Clearance with an Estimated Cost of Rs 9802.67 Cr (Rupees Nine Thousand Eight Hundred two Crores and Sixty Seven lakhs Only) at 2016 Price Level (PL) including cost of National Project (NP) Component of Rs 5803.61 Cr. The cost of National project does not include the cost of CAD-WM programme.

The above cost has been accorded Administrative Approval by the State Govt vide Govt. Resolution No. 177/2017/4106/17-27-lrr-9-49SAV/08TC dated 21.12.2017 based on recommendation by State Level Sanctioning Committee (SLSC) vide letter No. 1680/12-5-2017-100 (10)/15 dated 29.12.2017 (meeting held on 04.12.2017).

The cost of National Project Component has increased to Rs 5803.61 Cr (PL 2016) as against approved cost of AIBP (NP) components of Rs 3011.53 Cr (PL 2008) as on 01.04.2012 i.e. 92.71% increase.

The last approved cost of the project was Rs 7270.32 Cr (cost of component of National Project = Rs 3011.53 Cr) at PL 2008, which has the Investment Clearance (IC) of the erstwhile Planning Commission, Govt. of India vide its letter No. 2(287)2010 dated 16.04.2010. The latest cost of AIBP (NP) component of the project shows an increase of Rs 2792.08 Cr with respect to previous cost.


The requisite details have been submitted by the Project Authority as per the guidelines and duly filled Annexures for Fast Track Proforma Clearance of the 99 priority projects,

Conditions:

- 1) The cost would be treated as full and final till completion and no further escalation shall be entertained.
- 2) The project shall be completed in the financial year 2019-20 as per the agreed MoU.
- 3) In order to emphasize centrality of the Command Area Development (CAD) to the project as well as for its seamless integration of work to the head reaches and the tail end of the command, the project authority should fully ensure the hydraulic connectivity of irrigation water right from reservoir to farm gate and pari-passu action in the command area.
- 4) Depending upon topography, climate, hydro-geological nature of the command area pipeline based field channels should be encouraged.
- 5) The State Government should ensure that the conditions laid down by the statutory agencies specially erstwhile Ministry of Environment and Forest, Tribal Affairs, Social Welfare etc. are fully complied.

- 6) As the CCA of the project has been changed by the Project Authorities, so they should ensure the satisfactory compliances to the comments/observations of CWC on hydrology, irrigation planning aspects, etc. within a week time, so that the project may be cleared from above mentioned aspects.
- 7) The beneficiary farmers may be encouraged to take over the canal system after completion for operation and maintenance including transfer of system to beneficiary farmers for O&M and groundwater level monitoring, measures to combat water logging etc. in post project scenario needs to be fully ensured.
- 8) All the other conditions mentioned in the Investment Clearance of the erstwhile Planning Commission letter dated 16.04.2010 need to be fully ensured.
- 9) Project Authority should update the MIS data of the Project as per the latest approved estimate by 25.01.2018. Further Central Assistance proposal will be entertained subject to regular updation of MIS data.
- 10) Project Authorities would initiate the process for obtaining the necessary Statutory Clearances if so required from MoEF & CC and MoTA, due to change in location/command area of the project at their end.

Encl.: As above


19.01.18
(R. P. S. Verma)
Director (NP), CWC

To,

**The Principal Secretary,
Irrigation and Water Resources,
Govt. of Uttar Pradesh,
Bapu Bhawan, Lucknow,
Uttar Pradesh – 226001.**

Copy to:

Ministry of WR, RD & GR, Shram Shakti Bhawan, New Delhi.

1. Secretary, Ministry of WR, RD & GR, Shram Shakti Bhawan, New Delhi.
2. JS & FA, Ministry of WR, RD & GR, Shram Shakti Bhawan, New Delhi.
3. Commissioner (SPR), Ministry of WR, RD & GR, Shram Shakti Bhawan, New Delhi.

NITI Aayog

1. Joint Adviser, NITI Aayog, New Delhi

Central Water Commission

1. Chairman, Central Water Commission, Sewa Bhawan, New Delhi.
2. Member (WP&P), Central Water Commission, Sewa Bhawan, New Delhi.
3. Chief Engineer, PAO, Central Water Commission, Sewa Bhawan, New Delhi.
4. Chief Engineer, PMO, Central Water Commission, Sewa Bhawan, New Delhi.
5. Chief Engineer, UGBO, Central Water Commission, Lucknow, U.P.

State Government

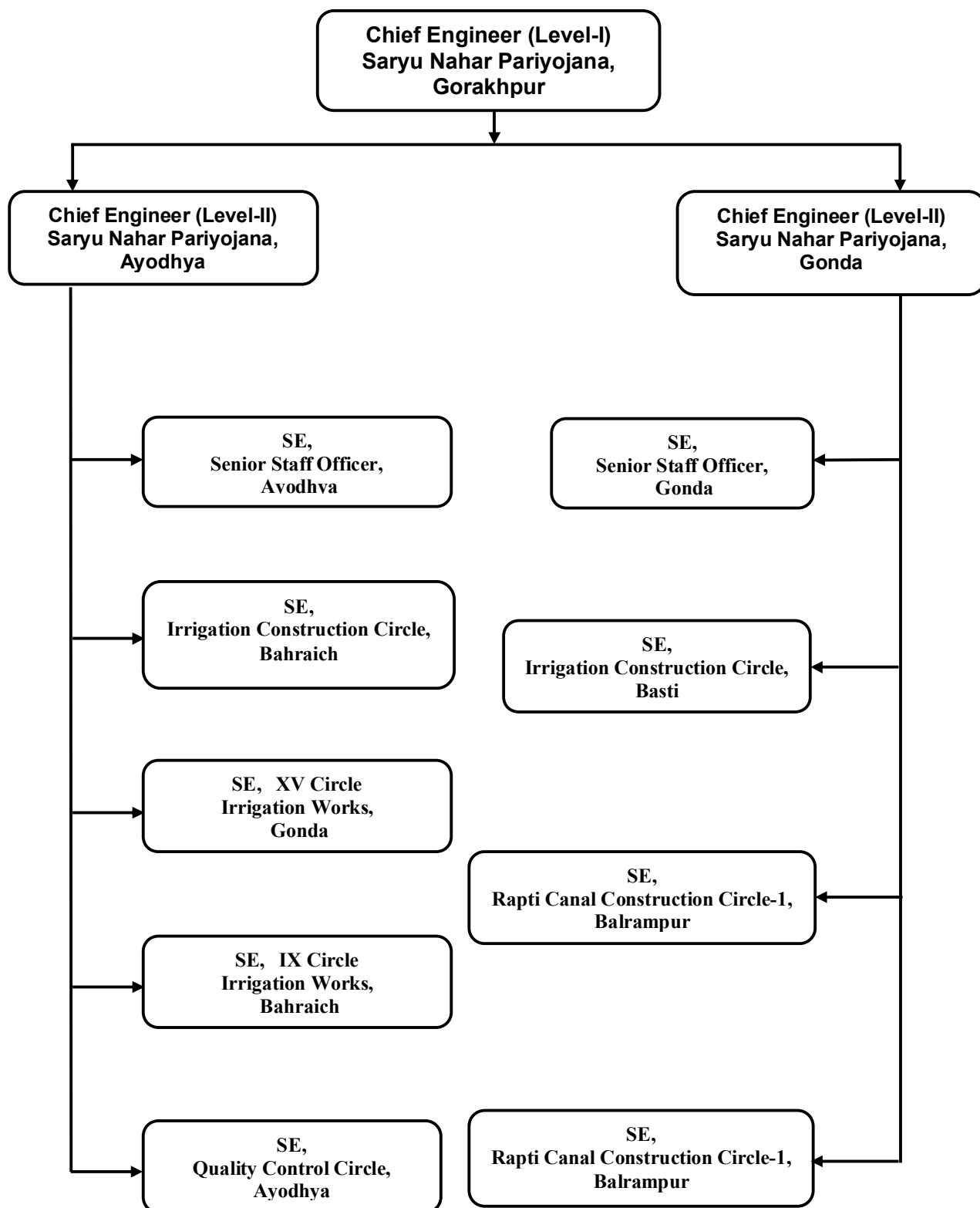
1. Engineer –in- Chief, Irrigation & Water Resources Deptt., Cantt. Road, Lucknow, U.P.
2. Chief Engineer, Saryu Nahar Pariyojna - I, Irrigation & Water Resources Deptt., Faizabad, U.P.
3. Chief Engineer, Saryu Nahar Pariyojna - II, Irrigation & Water Resources Deptt., Gonda, U.P.

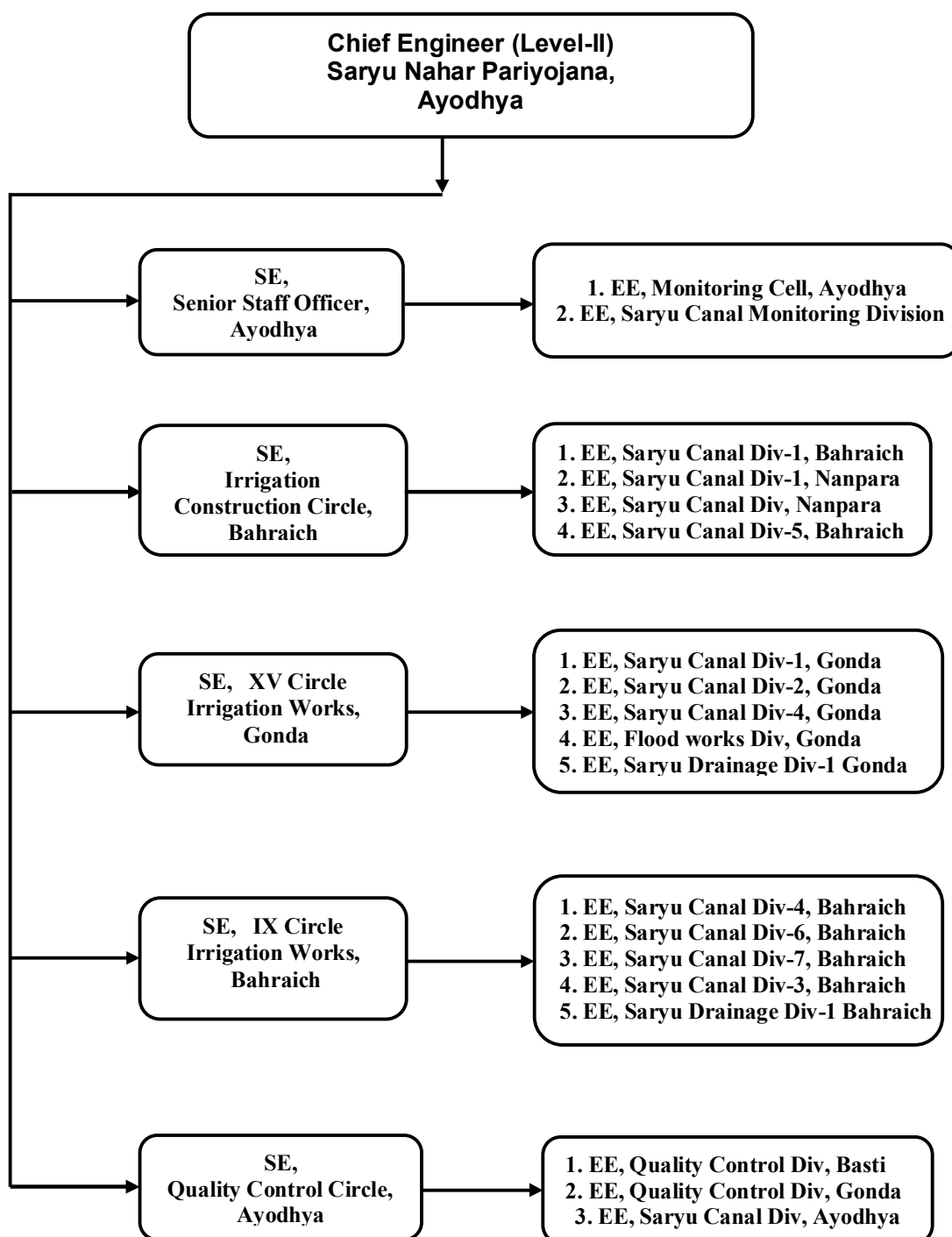
SARYU NAHAR PARIYOJNA

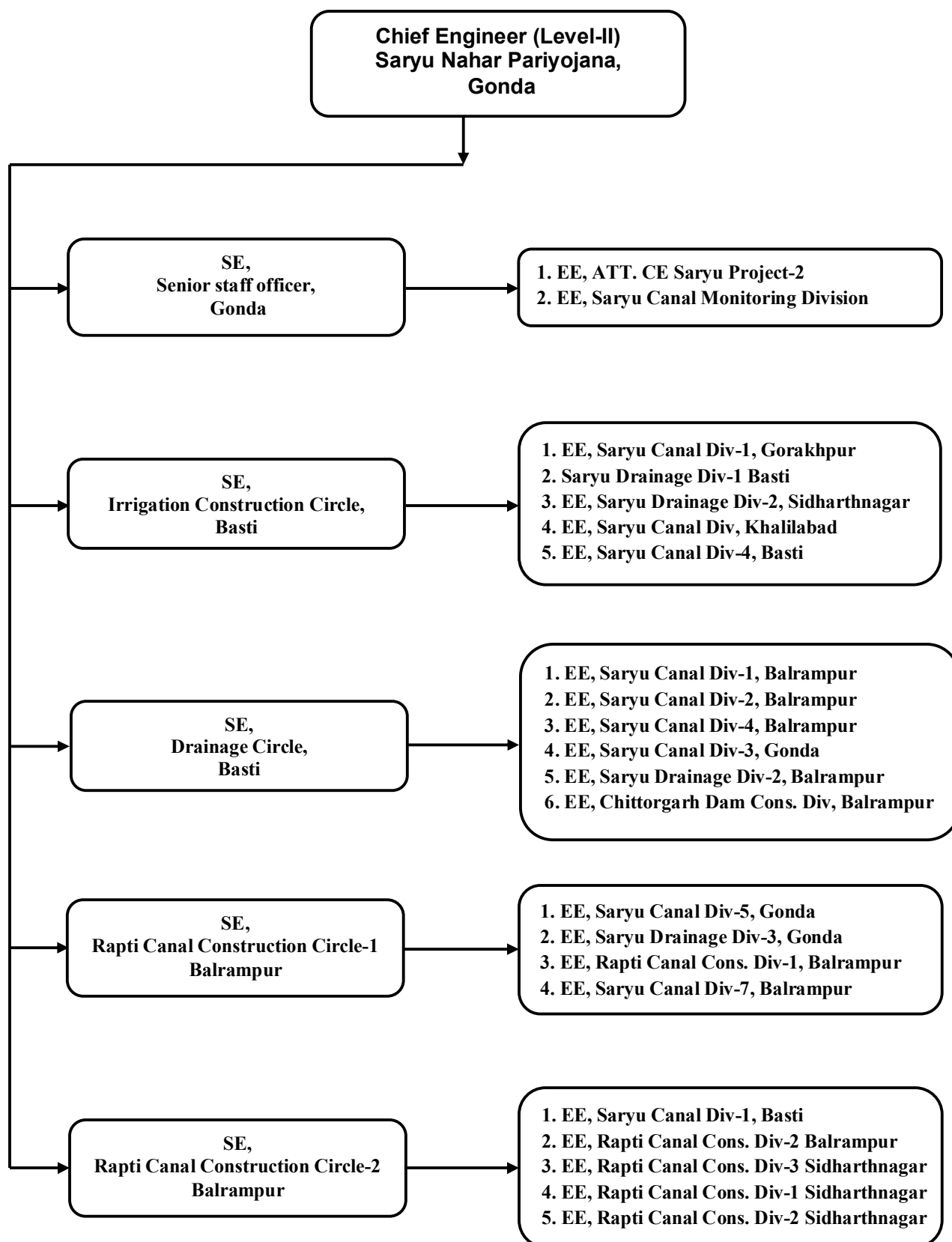
SALIENT FEATURES

| S.No | Description | As per approved Revised Proposal at PL 2008 | As per Revised Estimate at PL 2016 |
|------|--|--|--|
| 1 | 2 | 3 | 3 |
| 1 | Location of Dam | | |
| | State | Uttar Pradesh | Uttar Pradesh |
| | Tahsil | | |
| | District | Bahraich, Shravasti, Balrampur, Gonda, Basti, Sant kabir Nagar, Maharajganj, Siddharthnagar, Gorakhpur | Bahraich, Shravasti, Balrampur, Gonda, Basti, Sant kabir Nagar, Maharajganj, Siddharthnagar, Gorakhpur |
| | Village | | |
| | Latitude | | |
| | Longitude | | |
| 2 | Name of River | | |
| | Name of basin | Ghagara, Saryu, Rapti | Ghagara, Saryu, Rapti |
| 3 | i) Catchment Area (Sqm) | 56693.44 sq km | 56693.44 sq km |
| 4 | Average annual rainfall in the catchment | 945.30 mm | 945.30 mm |
| 5 | Average Monsoon rainfall in the catchment | 868.90 mm | 868.90 mm |
| 6 | Canal | | |
| | i) Type of Canal | Unlined (Saryu) Unlined (Rapti) | Unlined (Saryu) Unlined (Rapti) |
| | ii) Bed width | 69.60 m 36.00 m | 69.60 m 36.00 m |
| | iii) FSD | 4.50 m 2.70 m | 4.50 m 2.70 m |
| | iv) Free board | 0.75 m 0.75 m | 0.75 m 0.75 m |
| | v) Side slope | 1.5:1 1.5:1 | 1.5:1 1.5:1 |
| | vi) Bed gradient | 0.09 0.2 | 0.09 0.2 |
| | vii) Dischrge cumecs | 360 95 | 360 95 |
| | viii) Length | 63.15 km 147.85 km | 63.15 km 125.85 km |
| 7 | Command area in Hactare | | |
| | GCA | 16.00 lac lac | 16.00 lac lac |
| | CCA | 12.00 lac ha | 11.29 lac ha |
| | IP | 14.04 lac ha | 14.04 lac ha |
| 8 | Financial aspects | | |
| | i) Estimated Cost | 7270.32 Cr | 9802.68 Cr |
| | ii) BC ratio | 1.84 | 1.77 |
| | iii) Internal rate of return | | 8.70% |
| | iv) Cost per Hectare of Annual cost | 52204.56 / Ha | 69819.65 / Ha |
| | v) Gross Revenue | 355.04 | 13696.92 |
| | vi) Net Annual Benefit | 176607.68 | 290333.05 |
| | vii) Annual cost | 95982.43 | 164446.31 |

Organization Chart







संख्या-177/2017/4106/17-27-सिं-9-49एसएवी/08टीसी

प्रेषक,

मुश्ताक अहमद

संयुक्त सचिव,

उ०प्र० शासन ।

सेवा में,

प्रमुख अभियन्ता एवं विभागाध्यक्ष,

सिंचाई जल संसाधन विभाग,

उ०प्र०, लखनऊ।

सिंचाई एवं जल संसाधन अनुभाग-9
2017

लखनऊ : दिनांक 21 दिसम्बर,

विषय:- सरयू नहर राष्ट्रीय परियोजना के तृतीय पुनरीक्षित परियोजना की व्यय वित्त समिति की बैठक दिनांक 07.10.2017 द्वारा अनुमोदित लागत रु० 9802.68 करोड़ के व्यय के प्रस्ताव की प्रशासकीय एवं वित्तीय स्वीकृति के सम्बन्ध में ।

महोदय,

उपर्युक्त विषयक अधीक्षण अभियन्ता, अनु० एवं नियो० मण्डल-4, सिंचाई एवं जल संसाधन विभाग के पत्र संख्या-110/अनिम-4/योप्र०, दिनांक 01.11.2017 के सन्दर्भ में मुझे यह कहने का निदेश हुआ है कि सरयू नहर राष्ट्रीय परियोजना के तृतीय पुनरीक्षण की व्यय वित्त समिति की बैठक दिनांक 07.10.2017 द्वारा रु० 9802.68 करोड़ की लागत पर अनुमोदित की गयी है।

2- वित्त मंत्रालय, भारत सरकार के सर्कुलर संख्या-32/पीएसओ/एफएस/2015, दिनांक 28.10.2015 में यह निर्णय लिया गया है कि प्रधानमंत्री कृषि सिंचाई योजना में केन्द्र एवं राज्य का अंश 60:40 होगा। सरयू नहर राष्ट्रीय परियोजना वित्तीय वर्ष 2015-16 एवं इससे आगे प्रधानमंत्री कृषि सिंचाई योजना का अंश है। वित्त विभाग के शासनादेश संख्या-8/2015/बी-1-4058/दस-2015-13/2015, दिनांक 09.11.2015 में दी गयी व्यवस्था के अनुसार सरयू नहर राष्ट्रीय परियोजना को प्रधानमंत्री कृषि सिंचाई योजना में सम्मिलित किये जाने के फलस्वरूप केन्द्र सरकार द्वारा 60 प्रतिशत तथा राज्य सरकार द्वारा 40 प्रतिशत धनराशि वहन करने पर शासनादेश संख्या-1744/16-27-सिं-9-49एसएवी/08टीसी, दिनांक 12.08.2016 द्वारा निर्णय लिया गया है।

3- वित्त विभाग के शासनादेश दिनांक 26.08.2014 के प्रस्तर-5 के अनुसार सरयू नहर राष्ट्रीय परियोजना के तृतीय पुनरीक्षित परियोजना की अनुमोदित लागत रु० 9802.68 करोड़ के व्यय के प्रस्ताव पर सक्षम स्तरका अनुमोदन प्राप्त किया गया है। अतः पुनरीक्षित परियोजना की लागत रु० 9802.68 करोड़ के व्यय के प्रस्ताव की प्रशासकीय एवं वित्तीय स्वीकृति निम्नलिखित शर्तों के अधीन श्री राज्यपाल सहर्ष प्रदान करते हैं:-

--2

--2--

- (1) प्रश्नगत परियोजना के कार्य प्रारम्भ करने से पूर्व वित्तीय हस्तपुस्तिका खण्ड-6 के अध्याय-12 के प्रस्तर-318 में वर्णित व्यवस्था के अनुसार प्रायोजना पर सक्षम स्तर पर तकनीकी स्वीकृति अवश्य प्राप्त कर ली जाएगी तथा सक्षम स्तर से तकनीकी स्वीकृति प्राप्त होने के पश्चात् ही कार्य प्रारम्भ किया जाएगा।
- (2) मात्राओं को निर्माण के समय सुनिश्चित किये जाने का पूर्ण उत्तरदायित्व कार्यदायी संस्था/विभाग का होगा।
- (3) प्रायोजना का निर्माण कार्य ससमय पूर्ण करा लिया जाना सुनिश्चित किया जायेगा।
- (4) स्वीकृत धनराशि का व्यय वित्तीय हस्तपुस्तिकाओं के सुसंगत प्राविधानों, समय-समय पर शासन द्वारा निर्गत शासनादेशों में निहित प्राविधानों का अनुपालन करते हुये समयबद्ध रूप से सुनिश्चित किया जायेगा।
- (5) स्वीकृत धनराशि का उपयोग स्वीकृत प्रायोजन पर ही किया जायेगा, अन्यथा की स्थिति में किसी प्रकार की अनियमितता के लिये इसका समस्त उत्तरदायित्व विभाग का होगा।
- (6) उक्त धनराशि को कोषागार से एकमुश्त न आहरित कर आवश्यकतानुसार आहरित कर व्यय किया जायेगा तथा आहरित धनराशि बैंक/डाकघर/पीओएल/डिपोजिट खाते में न रखी जाये।
- (7) विभाग द्वारा नियमानुसार समस्त आवश्यक वैधानिक अनापत्तियां एवं पर्यावरणीय क्लीयरेंस सक्षम स्तर से प्राप्त करके ही निर्माण कार्य प्रारम्भ किया जाय।
- (8) प्रायोजनान्तर्गत प्रस्तावित कार्यों की द्वावृत्ति (डुप्लिकेसी) को रोकने की दृष्टि से प्रायोजना की स्वीकृति से पूर्व विभाग द्वारा सुनिश्चित किया जायेगा कि यह कार्य पूर्व में किसी अन्य योजना/कार्यक्रम के अन्तर्गत न तो स्वीकृत है और न वर्तमान में किसी अन्य योजना/कार्यक्रम में आच्छादित किया जाना प्रस्तावित है।
- (9) 1 प्रतिशत लेबर सेस की धनराशि इस शर्त के अधीन होगी कि श्रम विभाग को उक्त धनराशि का भुगतान किया जाएगा।
- (10) उक्त धनराशि का वित्त (आय-व्ययक) अनुभाग-1 कार्यालय ज्ञाप सं0-8/2017/बी-1-1190/दस-2017-231/2017 दिनांक 03.08.2017 में उल्लिखित दिशा निर्देशों एवं शर्तों के अन्तर्गत ही किया जायेगा तथा बजट मैनुअल में वर्णित प्राविधानों के अन्तर्गत व्यय का प्रमाण-पत्र उपलब्ध कराया जायेगा।
- (11) विभाग द्वारा वित्त (आय-व्ययक) अनुभाग-1 के कार्यालय ज्ञाप संख्या-8/2017/बी-1-1190/दस-2017-231/2017 दिनांक 03.08.2017 में वित्तीय स्वीकृतियों निर्गत किये जाने के सम्बन्ध में दिये गये दिशा निर्देशों का अनुपालन सुनिश्चित किया जायेगा।
- (12) विभाग द्वारा पुनरीक्षित परियोजना पर सक्षम स्तर से वित्तीय स्वीकृति प्राप्त होने के पश्चात् अवशेष कार्य कराए जा सकेंगे।
- (13) प्रायोजना प्रस्ताव में भूमि अध्याप्ति हेतु लागत का प्राविधान किया गया है। अतः प्रशासकीय विभाग द्वारा भूमि का क्रय सुसंगत वित्तीय नियमों के अन्तर्गत सुनिश्चित किया जाय।

--3

1- यह शासनादेश इलेक्ट्रानिकली जारी किया गया है, अतः इस पर हस्ताक्षर की आवश्यकता नहीं है।

2- इस शासनादेश की प्रमाणिकता वेब साइट <http://shasanadesh.up.nic.in> से सत्यापित की जा सकती है।

- (14) प्रायोजना हेतु प्राप्त होने वाले केन्द्रांश की धनराशि को समय से प्राप्त किए जाने हेतु विशेष रूप से गम्भीर प्रयास किए जाए ताकि प्रायोजना समय से पूर्ण हो सके।
- (15) विभाग/कार्यदायी संस्था द्वारा प्रायोजना में 254.45 किमी⁰ गैप्स को प्राथमिकता पर पूर्ण कराया जाना सुनिश्चित किया जाए ताकि सृजित सिंचन क्षमता में से बाधित सिंचन क्षमता 3.10 लाख हे० का लाभ उस क्षेत्र के कृषकों को मिलना प्रारम्भ हो जाए।
- (16) परियोजना की महत्ता एवं विशालता के दृष्टिगत इसके गुणवत्ता नियंत्रण एवं समयबद्धता को सुनिश्चित किए जाने हेतु विभाग के स्तर पर एक उच्च स्तरीय समिति का गठन किया जाय। यह समिति प्रश्नगत प्रायोजना में प्रस्तावित कार्यों की प्रगति का सतत अनुश्रवण करे ताकि प्रायोजना का कार्य गुणवत्तापूर्वक एवं समयबद्ध रूप से पूर्ण हो जाए।
- (17) प्रशासकीय विभाग द्वारा यह सुनिश्चित कर लिया जाएगा कि सरयू नहर परियोजना से सम्बन्धित एक अन्य प्रायोजना यथा-सरयू नहर परियोजना की चलित नहरों की क्षमता पुनर्स्थापना कार्य हेतु व्यय वित्त समिति द्वारा रु० 139.49 करोड़ की अनुमोदित लागत की वित्तीय स्वीकृति निर्गत हुई है अथवा नहीं। यदि वित्तीय स्वीकृति निर्गत की गयी है तो यह कार्य प्रश्नगत प्रायोजना में सम्मिलित तो नहीं है ताकि द्विराबृत्ति न हो।
- (18) पुनः पुनरीक्षित प्रयोजना में कराये गये कार्यों की लागत को प्रायोजना की लागत में यथावत सम्मिलित किया गया है, जिसका समस्त उत्तरदायित्व विभाग/कार्यदायी संस्था का होगा।
- (19) प्रभाग द्वारा प्रायोजनान्तर्गत प्रस्तावित कार्यों की मात्राओं को यथावत मानते हुए मात्र दरों का परीक्षण किया गया है।
- (20) प्रभाग द्वारा प्रायोजना की लागत का आकलन प्रशासकीय/वित्तीय अनुमोदन तथा बजट आवंटन के उद्देश्य से किया गया है। प्रभाग का मत है कि प्रायोजना पर सक्षम स्तर से तकनीकी स्वीकृति प्राप्त होने के पश्चात ही निर्माण प्रारम्भ कराया जाए।
- (21) प्रभाग द्वारा प्रस्ताव का परीक्षण लागत आगणन में प्रस्तावित विशिष्टियाँ एवं कार्य प्रावधानों को यथावत मानते हुए किया गया है जिसमें कोई उल्लेखनीय परिवर्तन जैसे-नये कार्य बढ़ाना, एवं अन्य उच्च विशिष्टिया, इस्तेमाल करना इत्यादि, व्यय वित्त समिति का पूर्व अनुमोदन प्राप्त किए बिना नहीं किया जाएगा। इसके अतिरिक्त समिति द्वारा अनुमोदित कार्यों की तकनीकी स्वीकृति निर्गत करने के पूर्व विस्तृत डिजाइन/ ड्राइंग बनाते समय प्रायोजना लागत में यदि 10 प्रतिशत से अधिक वृद्धि होती है तो इस स्थिति में पुनरीक्षित प्रायोजना प्रस्ताव पर प्रशासकीय विभाग द्वारा 03 माह के अन्दर समिति का पुनः अनुमोदन प्राप्त किया जाना अनिवार्य होगा अन्यथा बाद में पुनरीक्षित प्रायोजना लागत के प्रस्ताव पर विचार नहीं किया जाएगा। विभाग द्वारा इस आशय का उल्लेख सम्बन्धित स्वीकृति आदेश में सम्मिलित किया जायेगा।
- (22) विभाग द्वारा वन विभाग के निम्नलिखित अभिमत/परामर्श का अनुपालन सुनिश्चित किया जायेगा:-
- (क) प्रश्नगत परियोजना में अवस्थित वन भूमि के गैर वानिकी प्रयोग हेतु वन (संरक्षण) अधिनियम, 1980 के अन्तर्गत भारत सरकार से पूर्वानुमति की आवश्यकता होगी।

--4--

- (ख) यदि यह भूमि वन्य जीव विहार/राष्ट्रीय पार्क में अवस्थित पायी जाती है तो राष्ट्रीय वन्य जीव बोर्ड, नई दिल्ली के साथ-साथ मा० सर्वोच्च न्यायालय की अनुमति प्राप्त करनी होगी।
- (ग) इसके अतिरिक्त यदि प्रश्नगत क्षेत्र वन्य जीव विहार/ राष्ट्रीय पार्क की सीमा से 10 किमी० के अन्तर्गत अवस्थित है, तब राष्ट्रीय वन्य जीव बोर्ड, नई दिल्ली से भी अनुमति की आवश्यकता होगी।
- (घ) गैर वन भूमि/कृषि भूमि पर अवस्थित वृक्षों के पातन हेतु वृक्ष (संरक्षण) अधिनियम, 1976 के अन्तर्गत प्रभागीय वनाधिकारी से पातन की अनुमति प्राप्त करनी होगी।
- (23) पर्यावरण के अभिमत के अनुसार कार्यदायी विभाग/संस्था द्वारा सुसंगत वित्तीय एवं प्रशासकीय नियमों का तथा परियोजनाओं के क्रियान्वयन के सम्बन्ध में संगत पर्यावरणीय नियमों/अधिनियमों के अन्तर्गत वांछित पर्यावरणीय स्वीकृति प्राप्त कर लिये जाने तथा पर्यावरणीय नियमों एवं मा० न्यायालयों /न्यायाधिकरणों द्वारा समय-समय पर निर्गत आदेशों का समुचित अनुपालन सुनिश्चित किया जायेगा।
- (24) विभाग द्वारा पुनः पुनरीक्षित परियोजना के वित्त पोषण के सम्बन्ध में तत्काल नियमानुसार अग्रेतर कार्यवाही सुनिश्चित की जायेगी।

3- यह आदेश वित्त (व्यय नियंत्रण) अनुभाग-8 के अशासकीय संख्या-यू०ओ०-ई-8-1738 /दस-2017, दिनांक 21 दिसम्बर, 2017 में प्राप्त उनकी सहमति से जारी किए जा रहे हैं।

भवदीय

मुश्ताक अहमद
संयुक्त सचिव।

संख्या-177/2017/4106(1)/17-27-सिं-9-49एसएवी/08टीसी तद् दिनांक

प्रतिलिपि निम्नलिखित को सूचनार्थ एवं आवश्यक कार्यवाही हेतु प्रेषित :-

- (1) प्रमुख अभियन्ता(परियोजना), सिंचाई एवं जल संसाधन विभाग, उ०प्र०, लखनऊ।
- (2) वित्त नियंत्रक, सिंचाई विभाग, उ०प्र०, लखनऊ।
- (3) मुख्य अभियन्ता(बजट), सिंचाई विभाग, उ०प्र०, लखनऊ।
- (4) वित्त (व्यय नियंत्रण) अनुभाग-8/वित्त (आय-व्ययक) अनुभाग-1।
- (5) गार्ड बुक।

आज्ञा से,

मुश्ताक अहमद
संयुक्त सचिव।

| Computation of Central Assistance Name of the project : Saryu Nahar Pariyojana (National Project) | | |
|--|---|-----------|
| 1 | Approved cost of project on inclusion of project under NP in December 2012 (A) | 3011.5384 |
| 2 | Present latest estimated cost of NP components of the project [B] | 5803.6130 |
| 3 | Eligible cost of project to be funded through CA as on 01.04.2012 (allowing 20% escalation on approved cost as on 01.04.2012) [C] | 3613.8461 |
| 4 | Expenditure as on 01.04.2012 (D) | 0.0000 |
| 5 | Balance cost to be provided CA as on 01.04.2012 [E=C-D] | 3613.8461 |
| 6 | Eligible CA as on 01.04.2012 [F=E*funding factor for CA as applicable as on 01.04.2012 i.e. 0.9] | 3252.4615 |
| 7 | Unutilized CA as on 01.4.2012, if any (F1) | 0 |
| 8 | CA released between 01.04.2012 to 31.03.2013 (F2) | 67.98 |
| 9 | Balance CA to be provided after 01.04.2013 as per earlier funding pattern [F3=F-F1-F2] | 3184.4815 |
| 10 | Unspent CA as on 01.4.2013 (F4) | 60.4265 |
| 11 | Balance CA to be provided after 01.04.2013 as per revised funding pattern [F5= F3*New factor (as on 01.4.2013)/old factor (as on 01.4.2012)-{F4-F4*New factor/Old factor}] | 3184.4815 |
| 12 | CA released between 01.04.2013 to 31.03.2015 (G) | 591.605 |
| 13 | Balance CA to be provided after 01.04.2015 as per earlier funding pattern [H=F5-G] | 2592.8765 |
| 14 | Unspent CA as on 01.4.2015 (H1) | 0 |
| 15 | Balance CA to be provided after 01.04.2015 as per revised funding pattern [I= H (In case funding factor not changed w.e.f. 01.4.2015) OR I=H*New factor (as on 01.4.2015)/old factor (as on 01.4.2013)-{H1-H1*New factor/Old factor}] | 1728.5843 |
| 16 | CA released during 2015-16 (J) | 500.000 |
| 17 | Balance CA to be released as on 01.04.2016 [K** =I-J] | 1228.5843 |
| 18 | CA released during 2016-17 (L) | 62.0000 |
| 19 | Balance CA to be released as on 01.04.2017 [M =K-L] | 1166.5843 |
| 20 | CA released during 2017-18 | 0.0000 |
| 21 | CA released during 2018-19 | 305.00 |
| 22 | CA released during 2019-20 | 716.6 |
| 23 | Balance CA as on 31.03.2020 | 144.9843 |

[** CA so calculated would be restricted to balance cost of project (as on 01.4.2016 i.e. B - expenditure till 03/2016) in case balance cost is less than balance CA so calculated (as on 01.04.2016) CA