



उपग्रह दूरस्थ संवेदन द्वारा
अवलांचे जलाशय, तामिलनाडू का अवसादन आंकलन
**Sedimentation Assessment of Avalanche Reservoir,
Tamil Nadu, through Satellite Remote Sensing**



Contact Address –

Director,
Remote Sensing Directorate,
Central Water Commission
425(N), Sewa Bhavan, RK Puram
New Delhi- 110066
Tel-Fax : 011-29583429
e-mail : rsdte@nic.in



भारत सरकार
दूरस्थ संवेदन निदेशालय
केन्द्रीय जल आयोग, नई दिल्ली

Government of India
Remote Sensing Directorate
Central Water Commission, New Delhi

SEPTEMBER 2020



Sedimentation Assessment of Avalanche Reservoir, Tamil Nadu, through Satellite Remote Sensing

Project Team

Environment Management Org.,
Central Water Commission,
New Delhi.

Consultant

Maharashtra Engineering Research
Institute, Nashik,
Maharashtra.

Overall Guidance

Shri. Amrendra Kumar Singh,
Chief Engineer,
CWC, New Delhi.

Shri. A. P. Kohirkar,
Director General,
MERI, Nashik.

Shri. Rishi Shrivastava,
Director, RS Directorate,
CWC, New Delhi.

Shri. S. S. Deshmukh,
Superintending Engineer,
MERI, Nashik.

Project Incharge

Shri. Ashish Awasthi,
Dy. Director, RS Directorate,
CWC, New Delhi.

Shri. Makarand Kulkarni,,
Executive Engineer,
REC, MERI, Nashik.

Supporting Team

Mr. Abuzar Gaffari,
Asst. Director, RS Directorate,
CWC, New Delhi.

Shri. S. G. Wagh,
Sub Divisional Engineer,
REC, MERI, Nashik.

Mrs. A. Y. Morkar,
Jr. Scientific Assistant,
REC, MERI, Nashik.

FOREWORD

Sedimentation is a byproduct of erosion in the catchment area of the reservoir and therefore, lesser the rate of erosion, smaller is the sediment load entering the reservoir. Type of soil, drainage density, vegetation, rainfall intensity and duration, shape of the catchment and land use/land cover affect the erosion. Deposition of silt takes place in various parts of reservoir which gradually reduces its capacity. Dead storage capacity as well as live storage capacity gets affected due to siltation. Information about reduction in the storage capacity is necessary for the planning and operational purposes. In some of the reservoirs, the rate of siltation has been higher than what was considered at the planning stage. Therefore, it has become necessary to conduct surveys in all the existing reservoirs for ascertaining siltation rate and consequently to assess their useful life. The data will also be useful for deriving siltation indices for different regions and river basins for use in the future design of the reservoirs. These surveys will enable selection of appropriate measures for controlling sedimentation along with efficient management and operation of reservoirs. The conventional techniques like boat mounted eco-sounder, HYDAC etc. are time consuming as well as costly. Remote sensing technique can be used to calculate the present live storage capacity of a reservoir due to its synoptic and repetitive coverage. These surveys based on remote sensing data are faster, economical and reliable.

Central Water Commission has been regularly involved in carrying out sedimentation assessment studies of various reservoirs through remote sensing techniques. As a part of 50 reservoirs study which were proposed to be taken up under the plan scheme “Research & Development Programme in Water Sector” during the period 2017-20 (i.e. beyond 12th Five Year Plan) / upto the end of 14th Finance Commission, the work “Sedimentation assessment study of Forty (40) reservoirs in India through Remote Sensing Technique” was awarded to MERI, Nashik. Rest will be carried out in-house. Out of these forty (40) reservoirs, the study of twenty three (23) reservoirs were found feasible and hence, completed. The balance were found non feasible due to non-availability of cloud free imageries or non-attainment of FRL/MDDL.

I would like to compliment Shri Rishi Srivastava, Director (Remote Sensing Dte), Shri Ashish Awasthi, Dy. Director (Remote Sensing Dte) and other officers and staff of Remote Sensing Directorate for their dedicated efforts in bringing out this report. I would also like to compliment Shri Makarand Kulkarni, Executive Engineer (REC, MERI) and his team for timely completion of the report.

(Amrendra Kumar Singh)
Chief Engineer (EMO)
Central Water Commission

Acknowledgement

The Project Team is thankful for the guidance provided by Chief Engineer (EMO), CWC, and Director, Remote Sensing Directorate, CWC, New Delhi in completing the work of “Sedimentation Assessment Study of Forty (40) Reservoirs in India through Remote Sensing Technique” and in particular the present study of Avalanche Reservoir.

The project team is thankful to the Secretary (CAD), Water Resources Department, Government of Maharashtra for his keen interest and constant encouragement in completion of this study. Our special thanks are due to Shri. A. P. Kohirkar, Director General, MERI and Shri. S. S. Deshmukh, Superintending Engineer, MERI for their valuable support and motivation for carrying out this work.

Our thanks are also due to Shri. V. Ravi, Superintending Engineer, Generation Circle TNEB, Kundah Dist. Nilgiris, Tamil Nadu, for the keen interest shown in the work. We are also thankful to Shri. B. Halldore, Executive Engineer, Generation Circle TNEB, Kundah Dist. Nilgiris, Shri. N Nagendren, Assistant Executive Engineer, Shri..S. Yuvaraj, Assistant Engineer, Civil, Emerald, the Nilgiris for supplying all relevant data required for the present analysis.

PROJECT TEAM

CONTENTS		
Sr.No	Description	Page No.
	Foreword	I
	Acknowledgement	II
	Contents	III
	List of Tables and List of Figures	IV
	Abbreviations and Units Used	V
	Executive Summary	VI
1	Introduction	1
2	Sources and Mechanism of Sedimentation	2
3	Control of Sedimentation	6
4	Remote Sensing in Reservoir Sedimentation	7
5	Objectives	8
6	Study Area	8
7	Previous Surveys	8
8	Approach of Present Study	10
9	Data	10
	9.1 Field data	10
	9.2 Satellite data	11
	9.3 Criteria for satellite dates selection	13
10	Software Used	14
11	Methodology	14
	11.1 Procedural flow chart	15
	11.2 Data loading	15
	11.3 Image geo-referencing	15
	11.4 Area extraction	16
	11.5 Water spread area extraction	16
	11.6 Water spread area at regular interval	18
	11.7 Calculation of reservoir capacity	18
	11.8 Comparison with earlier surveys	26
	11.9 Field visit and ground truth	29
12	Results and Discussions	30
13	Limitations	30
14	Conclusions	31
	References	31
	Annexure	
	I Salient Features	32
	II Reservoir Levels Pertaining to Cloud Free Satellite Data	33
	III Ground Truth Scenario	34

Table No.	List of Tables	Page No.
1	Status of cloud free levels achieved during 2016 to 2019	10
2	Details of satellite data	11
3	Range of NDWI values for Avalanche reservoir	17
4	Water spread areas extracted from satellite data	17
5	Areal extent and cumulative live storage capacity of reservoir at regular interval defined from graph	18
6	Comparison of water spread areas of reservoir (Mm ²)	26
7	Comparison of live storage capacity of reservoir (Mm ³)	28
8	Live storage capacity loss due to sedimentation from original survey	30

Figure No.	List of Figures	Page No.
1	Conceptual sketch of density currents in a reservoir	4
2	Longitudinal patterns of sediment deposition in reservoirs	5
3	Conceptual sketch of different levels in a reservoir	6
4	Index map Avalanche reservoir, Tamil Nadu	9
5	FCC's of Avalanche reservoir, Tamil Nadu	12
6	Flow chart showing methodology for reservoir capacity estimation	15
7	Water spread areas on different dates of satellite pass	20
8	SRS Elevation-Area curve for Avalanche reservoir, Tamil Nadu	21
9	SRS Elevation-Capacity curve for Avalanche reservoir, Tamil Nadu	22
10	Elevation-Area curve for different years for Avalanche reservoir, Tamil Nadu	23
11	Elevation - Capacity curve for different years for Avalanche reservoir, Tamil Nadu	24
12	Modified SRS Elevation-Area-Capacity curve for Avalanche reservoir, Tamil Nadu	25

Abbreviations

AOI	Area of Interest
µm	Micrometer
CWC	Central Water Commission
DGPS	Differential Global Positioning System
ERS	European Remote Sensing Satellite
FCC	False Color Composite
FRL	Full Reservoir Level
IR	Infra Red
IRS	Indian Remote Sensing Satellite
LISS	Linear Imaging Self Scanning Sensor
MDDL	Minimum Draw Down Level
MERI	Maharashtra Engineering Research Institute
MOU	Memorandum of Understanding
MWL	Maximum Water Level
NDVI	Normalized Difference Vegetation Index
NDWI	Normalized Difference Water Index
NIR	Near Infra Red
NRSC	National Remote Sensing Centre
R	Red band
SAT	Shift Along Track
SQRT	Square Root
SRS	Satellite Remote Sensing
WSA	Water Spread Area

Units Used

ha	Hectare
km	Kilometer
m	Meter
Mm²	Million square meter
Mm³	Million cubic meter
sq km	Square kilometer
sq mi	Square mile

EXECUTIVE SUMMARY

Water resources sector has got high priority in all our developmental plans and accordingly large number of dams have been constructed to supply water for domestic, irrigation and industrial purposes. Natural processes like erosion in the catchment area and its deposition in various parts of the reservoir gradually, reduce the capacity of the reservoir. Dead as well as live storage get affected by it. The information about the reduction in capacity is necessary for all planning and operational purposes, which can be obtained through capacity surveys done at regular interval. The Remote Sensing technique can be used to calculate present capacity of the reservoir. It is very useful due to its simple analysis procedure and repetitive coverage by imagery. The surveys based on remote sensing data are faster, economical and more reliable. Department of Water Resources, River development and Ganga Rejuvenation, Ministry of Jalshakti, Government of India has initiated the programme to evaluate capacity of various reservoirs in the country. Accordingly the Central Water Commission has entrusted MERI, Nashik the work of “Sedimentation Assessment Study of Forty (40) Reservoirs in India through Remote Sensing Technique”. The present study is in regard to Avalanche Reservoir, Tamil Nadu India.

Present study aims in updating the elevation-area-capacity curve of Avalanche Reservoir, Tamil Nadu, and finding the capacity loss due to sedimentation in live storage. For carrying out the analysis, IRS P6, Resourcesat 2 and Resourcesat 2A LISS III data with 23.5 m resolution have been used. Satellite data for seven passes falling between MDDL (1943.100 m) and FRL (1985.800 m) are used for the analysis.

The Avalanche dam is located on the Avalanche stream. The dam site is located near Mullikur village in Kundah taluka, The Nilgiris district. The project has a designed gross capacity of 61.520 Mm³, with live capacity of 60.610 Mm³.

This study reveals that the present live capacity of reservoir is reduced by 3.080 Mm³ witnessing a loss of 5.082 % in a period of 56 (1961-2017) years. This amounts to 0.055% loss per annum in live storage since the impoundment.

SEDIMENTATION ASSESSMENT OF AVALANCHE RESERVOIR, TAMIL NADU, THROUGH SATELLITE REMOTE SENSING

1. Introduction

India – the second largest country in the world in terms of population – has about 17.3% of world's population, about 4% of world's water resources, and 2.44% of total geographical land area of the world. Therefore, in spite of having an average annual average precipitation to the tune of more than 1105 mm/year, the population density (lack of land resources) and per capita water resources availability make India a water-stressed country, as a whole. However, at a regional or basin level, many areas in the country are water-scarce or severely water-scarce owing to the spatial and temporal variability of water resources.

It is estimated that average annual precipitation over India is about 3880 BCM. Out of this precipitation, the average annual water resources availability of the country is about 1999.2 BCM, as estimated by Central Water Commission (CWC) in 2019. The water resources availability situation gets more murkier due to topographical and other constraints. Due to this, the total utilisable water resources in the country are about 1122 BCM (690 BCM of surface water and 432 BCM of groundwater). On one hand, the per-capita water resource availability is reducing due to increasing population and on the other, per-capita water usage is increasing due to industrialisation, urbanisation and change in lifestyles or dietary habits, making the available water resources still dearer.

India has typical monsoon-based climate where more than 75% rainfall occurs in three months i.e. July, August, and September. The total number of rainy days typically are in the tune of only 20-25 days per year (100-150 hours of rain per year) for most parts of the country. As a result, the bulk of annual water (75-80%) in rivers is available only in these three months. Therefore, in order to sustain life and other activities throughout the year from resources that are available only through 20-25 rainy days, it is absolutely essential to store the water in appropriately-sized storage structures (depending upon the topography and hydrology of the area).

So far, India has developed just 257.812 BCM as live storage capacity and 46.765 BCM is under construction. Realising the importance of storage structures, a large number of reservoirs have been built, since independence, during each plan in almost

all river basins, except Ganga and Brahmaputra, to tap the available surface water and to utilize it as and when needed. The capacity of reservoirs is gradually reducing due to silting and hence sedimentation of reservoir is of great concern for all the water resources development projects.

Correct assessment of the sedimentation rate is essential for assessing useful life of the reservoir as well as optimum reservoir operation schedule. Since 1958, when it was established that the live storage of reservoir is getting reduced due to siltation, a systematic effort has been made by various departments / organizations to evaluate the capacity of reservoirs. Various techniques like boat echo sounder, etc. being replaced by hydrographic data acquisition system (HYDAC) and HITECH method using Differential Global Positioning System (DGPS). The conventional techniques are found either time consuming or costly and require considerable manpower. Remote sensing technique to calculate the present live capacity of reservoir is found to be very useful in this context due to its synoptic and repetitive coverage. The surveys based on remote sensing data are faster, economical and more reliable.

These surveys will enable selection of appropriate measures for controlling sedimentation along with efficient management and operation of reservoirs thereby deriving maximum benefits for the society.

This report covers the study of Avalanche reservoir, Tamil Nadu by Central Water Commission, New Delhi.

2. Sources and Mechanism of Sedimentation

The principal sources of sediments are as follows:

1. Deforestation
2. Excessive erosion in the catchment
3. Disposal of industrial and public wastes
4. Farming
5. Channelisation works
6. Human activities
7. Land development, highways, and mining

The sedimentation is a product of erosion in the catchment areas of the reservoir and hence lesser the rate of erosion, smaller is the sediment load entering the reservoir. Various factors govern the erosion, transport and deposition of sediment in the

reservoir. Type of soil, drainage density, vegetation, rainfall intensity and duration, shape of catchment and land use /land cover affect the erosion. Sediment transportation depends upon slope of the catchment, channel geometry and nature of riverbank and bed. Deposition is a function of bed slope of the reservoir, length of reservoir, flow patterns, inflow - outflow rates, grain size distribution, mode of reservoir operation, etc.

The knowledge of sedimentation in the reservoir, it is necessary to study the mechanism of sedimentation, which will help to mitigate reservoir sedimentation, prolong the life span of reservoirs and to take full benefits of reservoirs. The sediment deposition in a reservoir depends on the following:

- Longitudinal and lateral valley shape
- Length and shape of reservoir
- Flow patterns in reservoir
- Capacity to inflow volume ratio (trap efficiency)
- Grain size distribution of sediment
- Water and sediment discharges
- Mode of reservoir operation
- Nature of incoming floods

Reservoirs created by dams on rivers lose their storage capacity due to sedimentation. As water enters a reservoir, its velocity diminishes because of the increased cross-sectional area of the channel. If the water stored in the reservoir is clear and the inflow is muddy, the two fluids have different densities and the heavy turbid water flows along the channel bottom towards the dam under the influence of gravity (Figure 1). This condition is known as "stratified flow" and the underflow is called a "density current". A large proportion of the transported silt eventually gets deposited at different levels of a reservoir and causes reduction not only in dead storage but also in live storage capacities.

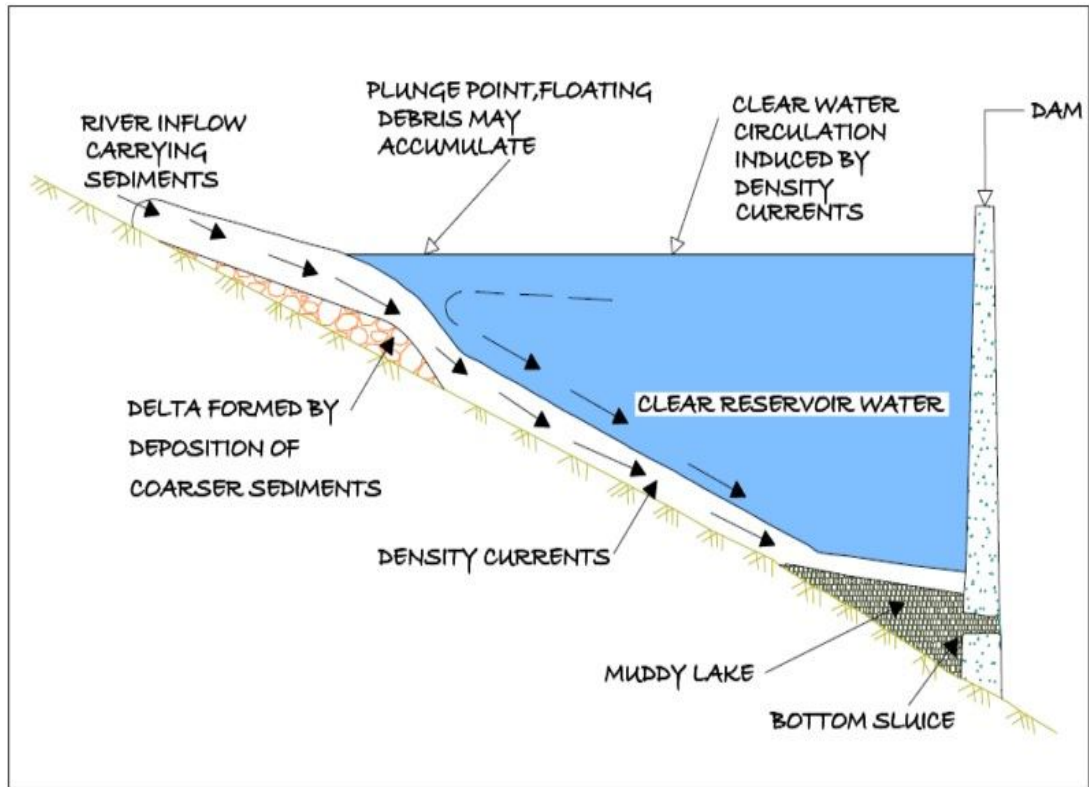


Figure 1: Conceptual sketch of density currents in a reservoir

Earlier it was believed that sediment always gets deposited in the bottom elevations of reservoir affecting the dead storage rather than depositing throughout the full range of reservoir depth. It is now fully realized that deposition takes place throughout the reservoir reducing the incremental capacity at all elevations.

Longitudinal deposition patterns in the reservoir will vary from one reservoir to another as influenced by pool geometry, discharge and grain size characteristic of the inflowing load and reservoir operation. There can be four types of depositing patterns in the reservoir as shown in the figure 2.

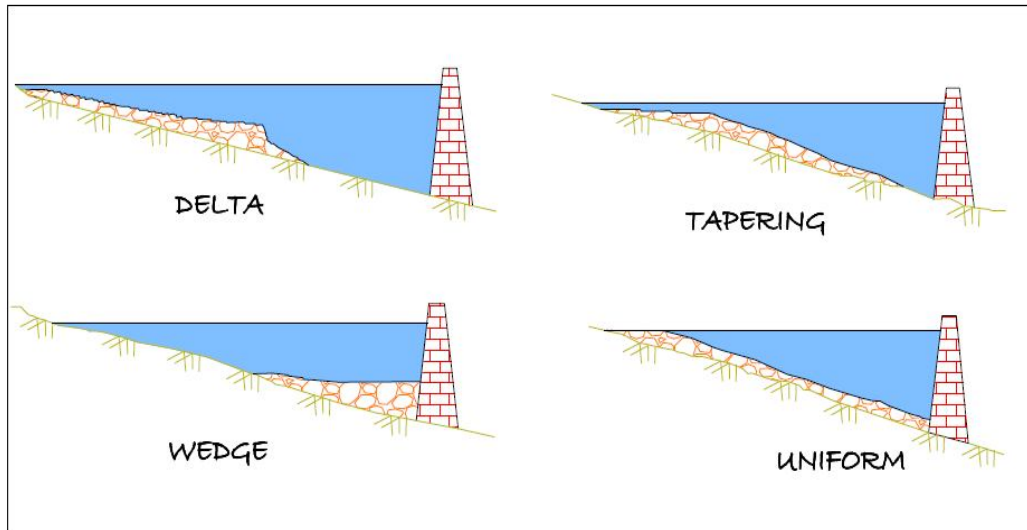


Figure 2: Longitudinal patterns of sediment deposition in reservoirs

Delta deposits contain the coarsest fraction of the sediment load, which is rapidly deposited at the zone of inflow. It may consist entirely of coarse sediment or may also contain a large fraction of finer sediment such as silt. Wedge-shaped deposits are thickest at the dam and become thinner moving upstream. This pattern is typically caused by the transport of fine sediment to the dam by turbidity currents. Wedge-shaped deposits are also found in small reservoirs with a large inflow of fine sediment, and in large reservoirs operated at low water level during flood events, which causes most sediment to be carried into the vicinity of the dam. Tapering deposits occur when deposits become progressively thinner moving toward the dam. This is a common pattern in long reservoirs normally held at high pool level, and reflects the progressive deposition of fines from the water moving toward the dam. Uniform deposits are unusual but do occur. Narrow reservoirs with frequent water level fluctuation and small load of fine sediment can produce nearly uniform deposition depths. Several factors like amount of sediment load, size distribution, fluctuations in stream discharge, shape of reservoir, stream valley slope, vegetation at the head of the reservoir, location and size of reservoir, outlets, etc., control the location of sediment deposits in the reservoir.

Figure 3 shows different levels in the reservoir where-in the capacity is affected. Reservoirs operate between Minimum Draw Down Level (MDDL), which is at sluice level to Full Reservoir Level (FRL), which is at dam level. The storage between these

two levels is the live storage as shown in Figure 3. The storage below MDDL is the dead storage. Water stored along the valley bed is known as valley storage.

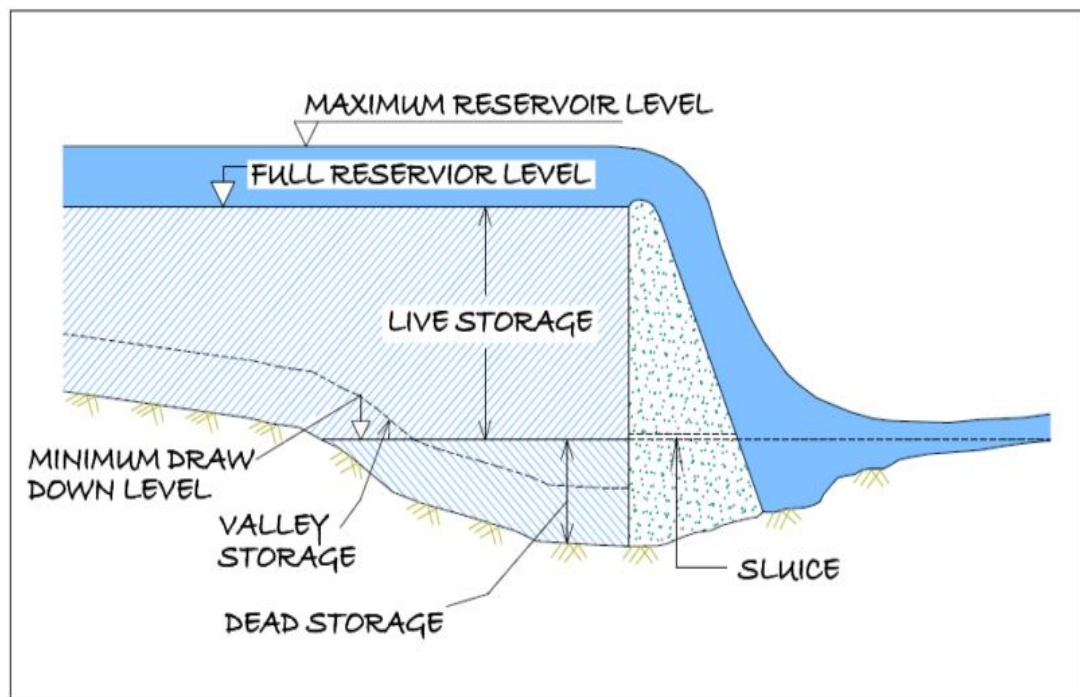


Figure 3 : Conceptual sketch of different levels in a reservoir

3. Control of Sedimentation

Due to the multiple variables involved in reservoir sedimentation, no single control measure can be considered as the most effective. The measures, which can be employed to limit sedimentation and turbidity, are as under:

1. Soil and water conservation measures within the drainage basin, contour ploughing, strip cropping, suitable farming practices, improvement of agricultural land, construction of small dams/ponds/terraces/check dams on gullies
2. Revetment and vegetation cover
3. Evacuation of sediment
4. Reservoir shoreline protection
5. Stream bank and flood plain protection
6. Ridge plantation such as pasture development and reservoir shoreline protection

Silting not only occurs in the dead storage but also encroaches into the live storage zone, which impairs the intended benefits from the reservoirs. Therefore, the problem of sedimentation needs careful consideration. Adequate provision has to be made in

the reservoir for accumulation of anticipated quantities of silt. Steps are also required to be taken to ensure that the storage capacities available are not lost or get reduced by accelerated sedimentation.

4. Remote Sensing in Reservoir Sedimentation

Remote sensing is the art and science of collecting information about earth's feature without being in physical contact with it. Various features on earth surface reflect or emit electromagnetic energy depending upon their characteristics. The reflected radiation depends upon physical properties of the terrain and emitted radiation depends upon temperature and emissivity. The radiations are recorded by the sensors onboard satellite and then are transmitted back to earth. Discrimination between features depends on the fact that the response from different features like vegetation, soil, water is different and discernable. Data received at ground stations, is digitally or visually interpreted to generate thematic maps.

Data acquisition is done from various polar orbiting satellites (orbiting around 800 to 900 km altitude), namely Indian Remote Sensing (IRS) satellite, European Remote Sensing (ERS) satellite, Landsat and SPOT satellites. Data from these satellites are being received and archived by National Remote Sensing Centre (NRSC) at Hyderabad.

Present study utilizes data from Resourcesat 2 and Resourcesat 2A satellite. They have LISS III sensor, which operates in four spectral bands. Three bands are in the visible and near infra red region with spectral band widths as 0.52-0.59 μm , 0.62-0.68 μm and 0.77-0.86 μm and spatial resolution as 23.5 m. Fourth band with spectral bandwidth of 1.55-1.75 μm falls in short wave infra red region.

Reservoir sedimentation surveys are essentially based on mapping of water-spread areas at the time of satellite over pass. It uses the fact that water-spread area of the reservoir reduces with the sedimentation at different levels. The water-spread area and the elevation information are used to calculate the volume of water stored between different levels. These capacity values are then compared with the previously calculated capacity values to find out change in capacity between different levels.

5. Objectives

The objective of the study is to estimate capacity loss of Avalanche reservoir due to sedimentation through satellite remote sensing. Following objectives will be achieved in the study.

- (i) Updating of Elevation-Area-Capacity curve using satellite data in live storage zone of Avalanche reservoir.
- (ii) Estimation of live storage loss due to sedimentation in Avalanche reservoir.

6. Study Area

The Avalanche dam is located near Mullikur village in Kundah taluka, Nilgiris district of Tamil Nadu State, on the Avalanche stream. The dam site is located at 11° 19' 23"N latitude and 76° 36' 40" E longitude. The location of the dam is shown in Figure 4 as Index Map.

The Avalanche dam serves purpose of storage cum forebay dam. The catchment area at the dam site is 58.534 sq km. The dam was completed in the year 1961. The FRL and MWL of the reservoir are at a level of +1985.800 m. The dead storage and live storage capacity of Avalanche dam are 0.910 Mm³ and 60.610 Mm³ respectively. The MDDL of reservoir is at +1943.10 m. It is 323m long and 65m high masonry gravity dam. It has two vertical spillway gates. The storage capacity is 156.20 Mcum inclusive that of Emerald Dam. The Combined catchment area of Avalanche and Emerald dam is 58.534sq.Km. This Avalanche Dam receives water from Upper Bhavani Dam through Power House V with power generation capacity of 40MW. This dam is interconnected with Emerald dam through a Inter Connecting Tunnel. The regulated discharge from Varahapallam Weirs (East and West) is also let into the Avalanche- Emerald reservoir through unlined tunnel. Salient features of Avalanche project are given in Annexure (I).

7. Previous Surveys

As reported by field officers, the hydrographic survey has not been carried out on this project.

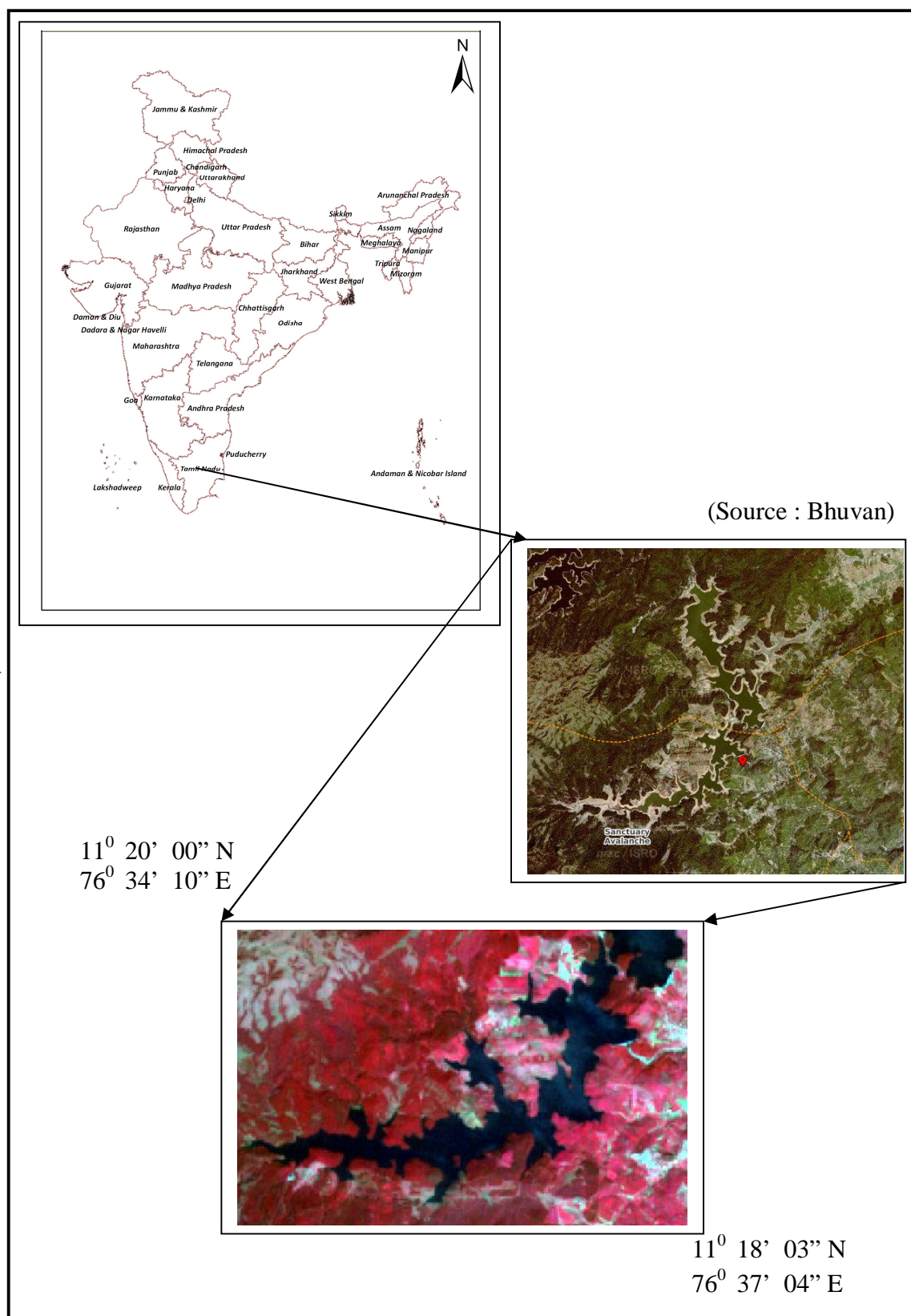


Figure 4 : Index map of Avalanche reservoir, Tamil Nadu

8. Approach of Present Study

Remote sensing technique is utilized to assess the sedimentation between operating levels of reservoir. This operating range between MDDL (+1943.100 m) and FRL (+1985.800 m) varies each year and depends upon yield in the reservoir and utilization of water. During 2016 to 2019 the minimum and maximum levels in this reservoir fluctuated in various ranges. They are shown in Table 1. The cloud free levels in this range are selected for analysis.

Table 1 : Status of cloud free levels achieved during 2016 to 2019

Sr. No.	Water year	Minimum level (m)	Maximum level (m)	Difference of minimum and maximum levels (m)
1	2016-2017	1958.110	1964.240	6.130
2	2017-2018	1975.090	1976.160	1.070
3	2018-2019	1981.370	1984.240	2.870

The information reveals that in the water year 2018-2019, reservoir was filled up to 1984.240 m (FRL= +1985.800 m) while it got depleted up to RL +1958.110 m (MDDL= +1943.100 m) in 2016-2017. For present study, three images from water year 2016-2017 and two images from water year 2017-2018 and two images from water year 2018-2019 have been used. The year of survey of present study is treated as year 2016-2017.

9. Data

9.1 Field data

Following data set was obtained from office of Civil Generation Circle, Kundah for Avalanche reservoir and used in the analysis.

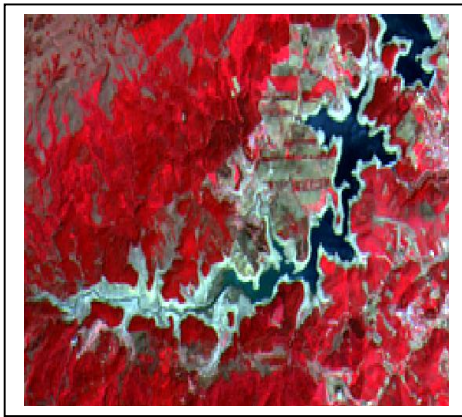
- Index map of reservoir
- Latitude and longitude of the reservoir
- Original area capacity table at 1m interval.
- Salient features of the project
- Reservoir levels for given dates of satellite pass.

9.2 Satellite data

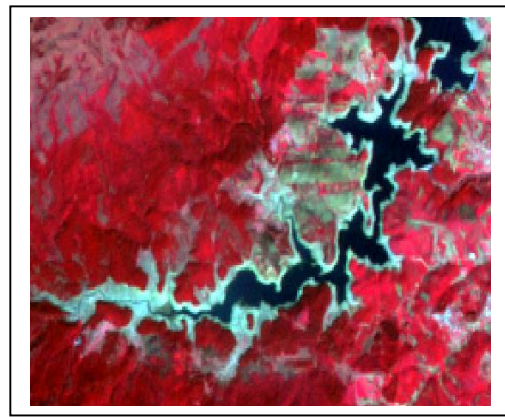
IRS P6 and Resourcesat 2, and Resourcesat 2A LISS III images of 23.5 m resolution having Path 99, Row 65 have been used in present analysis. The FCC of the images are as given in Figure 5. The dates of satellite pass of selected images and corresponding reservoir levels are given in Table 2.

Table 2 : Details of satellite data

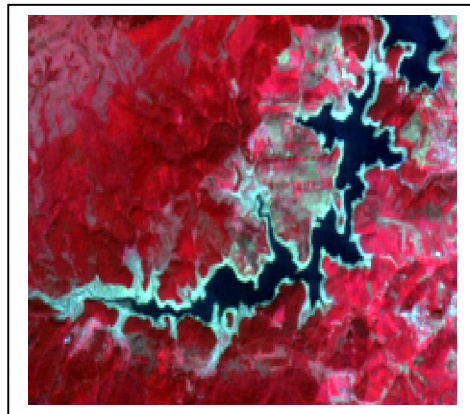
Sr. No.	Date of pass	Elevation (m)
1	17 - Feb - 2017	1958.110
2	31 - Dec - 2016	1961.550
3	25 - Nov - 2016	1964.240
4	20- Mar - 2018	1975.090
5	19 - Jan - 2018	1976.160
6	02 - Jan - 2019	1981.370
7	15 - Nov - 2018	1984.240



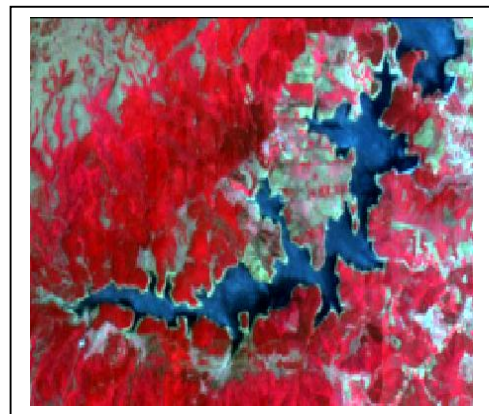
17-Feb-2017 (1958.110 m)



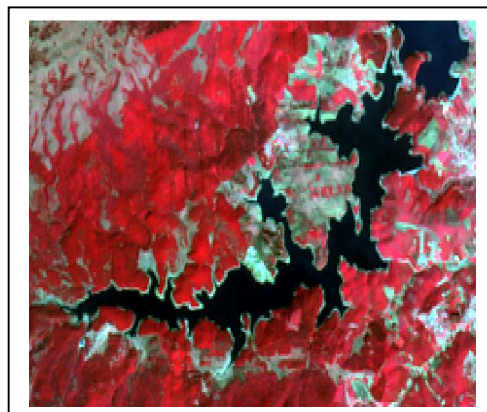
31 - Dec - 2016 (1961.550 m)



25 - Nov - 2016 (1964.240 m)



20- Mar - 2018 (1975.090 m)



19 - Jan - 2018 (1976.160 m)

Figure 5 : FCC's of Avalanche reservoir, Tamil Nadu

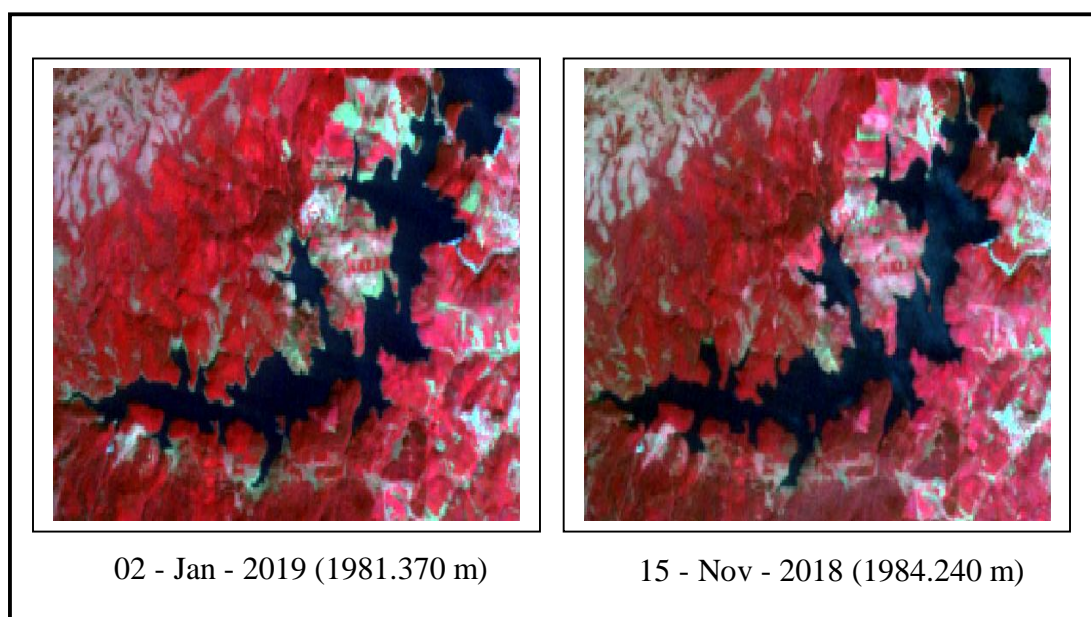


Figure 5 : FCC's of Avalanche reservoir, Tamil Nadu

9.3 Criteria for satellite dates selection

The selection of the satellite data for the present study is based on the following guidelines given in the MOU signed between CWC, New Delhi and MERI, Nashik.

- (i) To carry out the feasibility assessment of the given reservoir regarding availability of cloud free satellite data of dates of satellite pass corresponding to reservoir levels near MDDL as well as near FRL and at uniform interval to the extent possible in between MDDL and FRL for the latest water year or maximum up to two previous water years.
- (ii) To carry out sedimentation analysis through SRS technique to cover the entire live storage zone of the reservoir.
- (iii) In case of inability to cover the entire live storage zone of the reservoir due to non-availability of cloud free satellite data at FRL and MDDL, the study may be taken up if minimum of 80 % of live storage capacity is covered by the available cloud free dates of satellite pass on maximum and minimum reservoir levels.

NRSC website has been browsed to prepare a list of dates of satellite pass over the Avalanche reservoir for the year 2016 to 2019. The reservoir levels on these dates along with corresponding water spread areas and capacities have been obtained from field officers.

The reservoir has been depleted up to 1958.110 m as against MDDL (+1943.100 m). The maximum level covered in the present study is 1984.240 m against to FRL (1985.800 m). Variation in the study level is $(1984.240 - 1958.110) = 26.130$ m. The difference between FRL and MDDL is $(1985.800 - 1943.100) = 42.700$ m.

In the present study, storage of 48.487 Mm^3 has been covered as against total live capacity of 60.610 Mm^3 . Thus the percentage live storage covered by this study is 80.00 %. (Annexure II)

Statement giving cloud free dates of satellite pass, reservoir levels, areas and capacities for the Avalanche reservoir has been prepared and submitted to CWC. The CWC has finalized the dates and placed order of images with NRSC, Hyderabad. The data has been received directly to MERI from NRSC, Hyderabad.

10. Software Used

The analysis is done using the software ERDAS IMAGINE Ver. 2010. This software provides facility for satellite image analysis, by different methods.

11. Methodology

The basic approach is to find out the water-spread areas from satellite data for different water levels between MDDL to FRL. The difference between areal spread of water between current year and earlier years is the areal extent of silting at these levels. The methodology for estimation of live capacity of reservoir using remote sensing consists of following major tasks

- (i) Digital data base creation
- (ii) Estimation of water-spread area
- (iii) Calculation of reservoir capacity
- (iv) Comparison of result with previous surveys
- (v) Estimation of live capacity loss due to sedimentation

11.1 Procedural flow chart

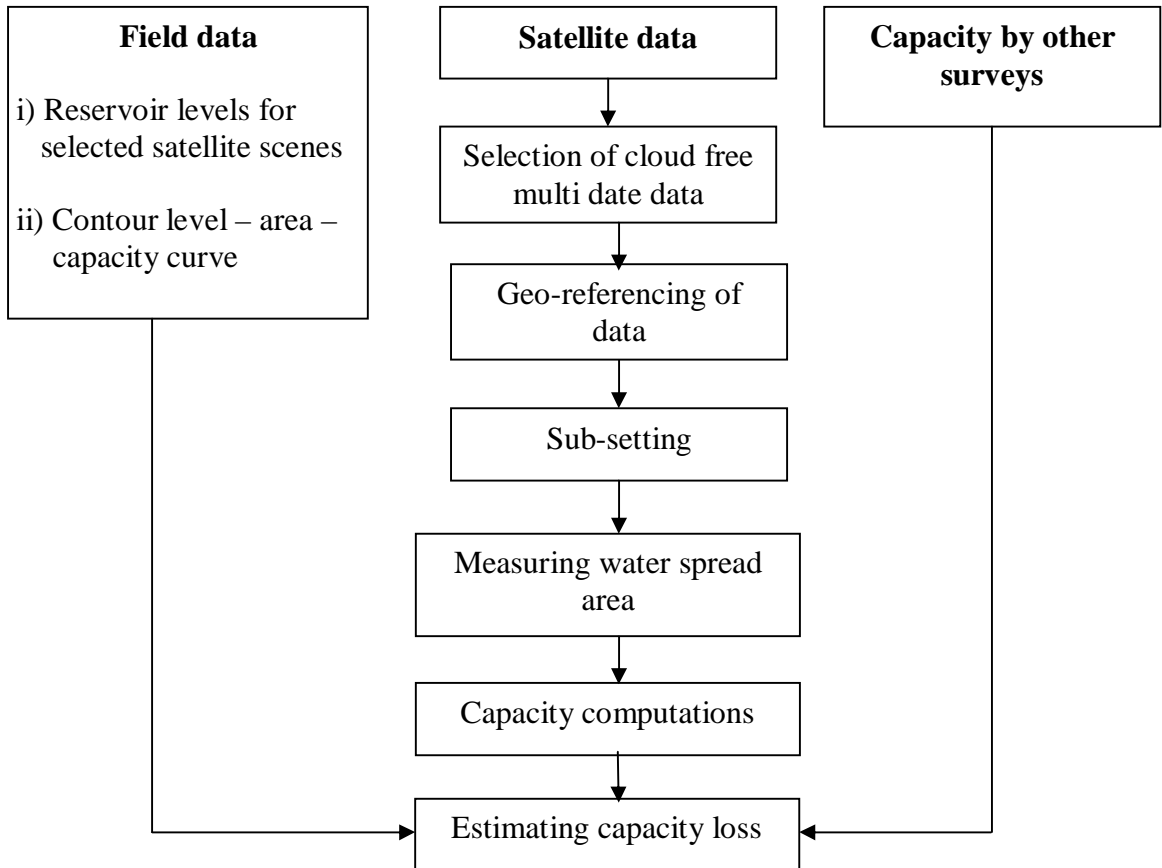


Figure 6 : Flow chart showing methodology for reservoir capacity estimation

11.2 Data loading

All the scenes are loaded in the system. These are listed as different files. They are renamed corresponding to falling levels. It helps in identifying the images during analysis. These files are in .img formats.

11.3 Image geo-referencing

Geo-referenced ready satellite images have been used in the analysis. However, when all the images are superimposed and swiped, slight displacements of images are noticed. Treating the image of the highest water level as the base image all the remaining images are again geo-referenced using image to image option of the ERDAS IMAGINE software.

11.4 Area extraction

A subset of the rectified scene is defined so as to facilitate and use in subsequent analysis. Rectified scene is loaded on the system. A small area around reservoir is extracted from one scene in interactive way. Once the area of interest (AOI) is finalized other scenes are extracted using the same AOI.

11.5 Water spread area extraction

There are various methods for the extraction of water area information from remote sensing imagery, which, according to the number of bands used, are generally divided into two categories, i.e. single-band and multi-band methods.

The multi-band method takes advantage of reflective differences of each involved band. There are two ways to extract water information using the multi-band method. One is through analyzing signature features of each ground target among different spectral bands, finding out the signature differences between water and other targets based on the analysis, and then using an if-then-else logic tree to delineate land from open water.

The other one is a band-ratio approach using two multispectral bands. One is taken from visible wavelengths and is divided by the other usually from near infrared (NIR) wavelengths. As a result, vegetation and land presences are suppressed while water features are enhanced. However, the method can suppress non-water features but do not remove them, and therefore the Normalized Difference Water Index (NDWI) was proposed by Mc Feeters (1996) to achieve this goal.

The NDWI is expressed as follows (Mc Feeters 1996):

$$NDWI = \frac{Green - NIR}{Green + NIR}$$

Where Green is a green band such as TM band 1, and NIR is a near infrared band such as TM band 3.

This index is designed to

- (1) Maximize reflectance of water by using green wavelengths;
- (2) Minimize the low reflectance of NIR by water features; and
- (3) Take advantage of the high reflectance of NIR by vegetation and soil features.

As a result, vegetation and land presences are suppressed while water features are enhanced.

Table 3 : Range of NDWI values for Avalanche reservoir

Date of pass	Minimum value	Maximum value
17 - Feb - 2017	0.0035	0.7180
31 - Dec - 2016	0.3548	0.5184
25 - Nov - 2016	-0.0492	0.0576
20- Mar - 2018	-0.0733	0.1318
19 - Jan - 2018	0.0078	0.0576
02 - Jan - 2019	-0.0796	0.2394
15 - Nov - 2018	-0.1284	0.1755

Using the above range of values, water spread areas are extracted for all the scenes. The Water Spread Areas (WSA) derived for all the scenes and their corresponding water levels are shown in Table 4.

Table 4 : Water spread areas extracted from satellite data

Date of pass	Elevation (m)	Area (Mm ²)
17 - Feb - 2017	1958.110	0.778
31 - Dec - 2016	1961.550	0.971
25 - Nov - 2016	1964.240	1.237
20- Mar - 2018	1975.090	2.052
19 - Jan - 2018	1976.160	2.229
02 - Jan - 2019	1981.370	2.810
15 - Nov - 2018	1984.240	3.011

The water spread areas on selected dates of satellite pass are shown in Figure 7. The tail of the reservoir is defined by removing the river portion from extracted WSA, carefully.

11.6 Water spread area at regular interval

Water levels on the dates of pass for selected satellite data are not available at regular interval. However to get WSA values at regular interval of elevation, area-elevation curve is plotted for the reservoir and a second order polynomial has been fitted. The areas at an elevation interval of 1.0 m are computed from this best fit equation. These values are given in Table 5.

11.7 Calculation of reservoir capacity

Computation of reservoir capacities at different elevations have been derived using following formula

$$V = H / 3 * (A_1 + A_2 + \text{SQRT} (A_1 * A_2)).$$

Where V is reservoir capacity between two successive elevation of h_1 and h_2

H is the elevation difference, $H = (h_1 - h_2)$

A_1 and A_2 are areas of reservoir water spread at elevation h_1 and h_2 respectively.

The cumulative live capacities derived at different elevation have been shown in Table 5.

Table 5 : Areal extent and cumulative live storage capacity of reservoir at regular interval defined from graph

Water elevation m	Water spread area Mm ² (2016-17)	Cumulative capacity Mm ³ (2016-17)
MDDL1943.100	0.023	0.000
1944.000	0.057	0.035
1945.000	0.096	0.110
1946.000	0.136	0.226
1947.000	0.179	0.383
1948.000	0.223	0.584
1949.000	0.269	0.830
1950.000	0.317	1.123
1951.000	0.367	1.465
1952.000	0.419	1.857
1953.000	0.472	2.302
1954.000	0.527	2.801

1955.000	0.584	3.356
1956.000	0.643	3.969
1957.000	0.703	4.642
1958.000	0.765	5.376
1959.000	0.830	6.174
1960.000	0.896	7.036
1961.000	0.963	7.965
1962.000	1.033	8.963
1963.000	1.104	10.031
1964.000	1.177	11.171
1965.000	1.252	12.386
1966.000	1.329	13.676
1967.000	1.407	15.044
1968.000	1.488	16.491
1969.000	1.570	18.020
1970.000	1.654	19.632
1971.000	1.739	21.328
1972.000	1.827	23.111
1973.000	1.916	24.982
1974.000	2.007	26.944
1975.000	2.100	28.998
1976.000	2.195	31.145
1977.000	2.292	33.388
1978.000	2.390	35.729
1979.000	2.490	38.169
1980.000	2.592	40.709
1981.000	2.696	43.353
1982.000	2.801	46.101
1983.000	2.908	48.956
1984.000	3.018	51.919
1985.000	3.129	54.992
FRL 1985.800	3.219	57.530

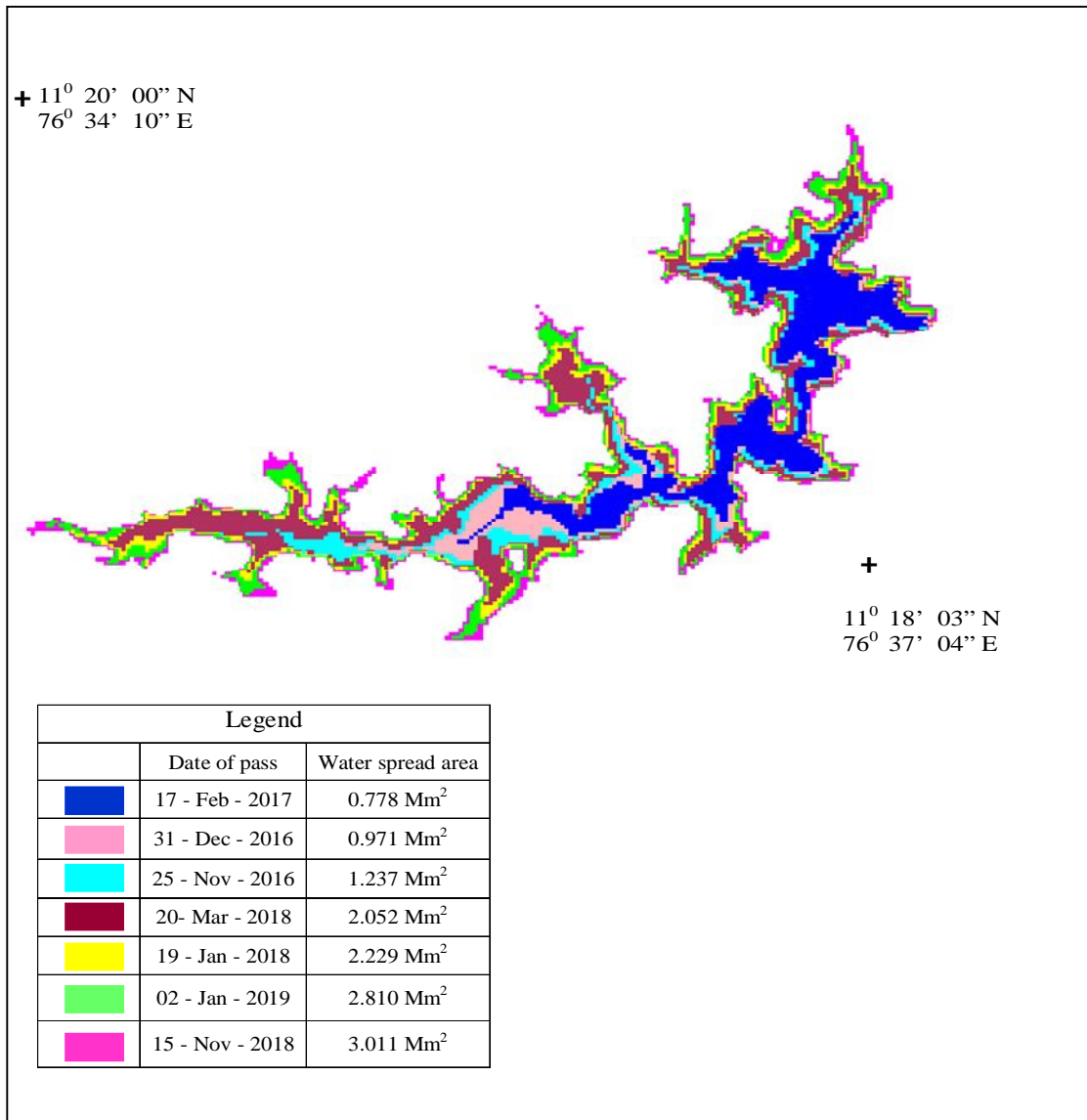


Figure 7 : Water spread areas on different dates of satellite pass

SRS elevation area curve is shown in Figure 8 and tabulated in Table 4. Elevation capacity curves is shown in Figure 9 and tabulated in Table 5. The elevation-area curve drawn through original and present surveys carried out for Avalanche reservoir are shown in Figure 10 which is based on Table 6. The elevation-capacity curve drawn through original and present surveys carried for the Avalanche reservoir are shown in Figure 11 and tabulated in Table 7. In Figure 12 updated SRS elevation-area-capacity curve is drawn and tabulated in Table 5.

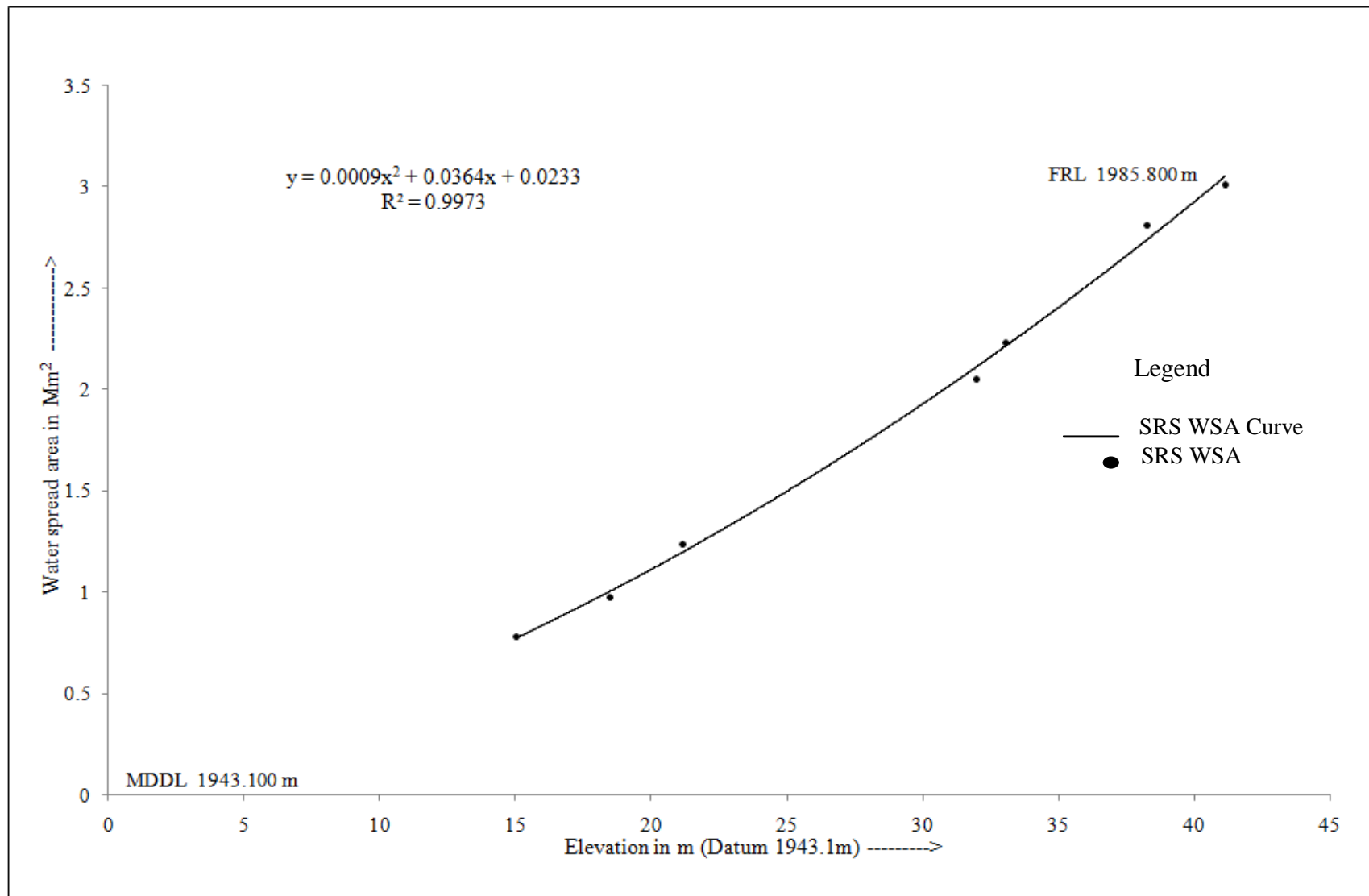


Figure 8 : SRS Elevation-Area curve for Avalanche reservoir, Tamil Nadu

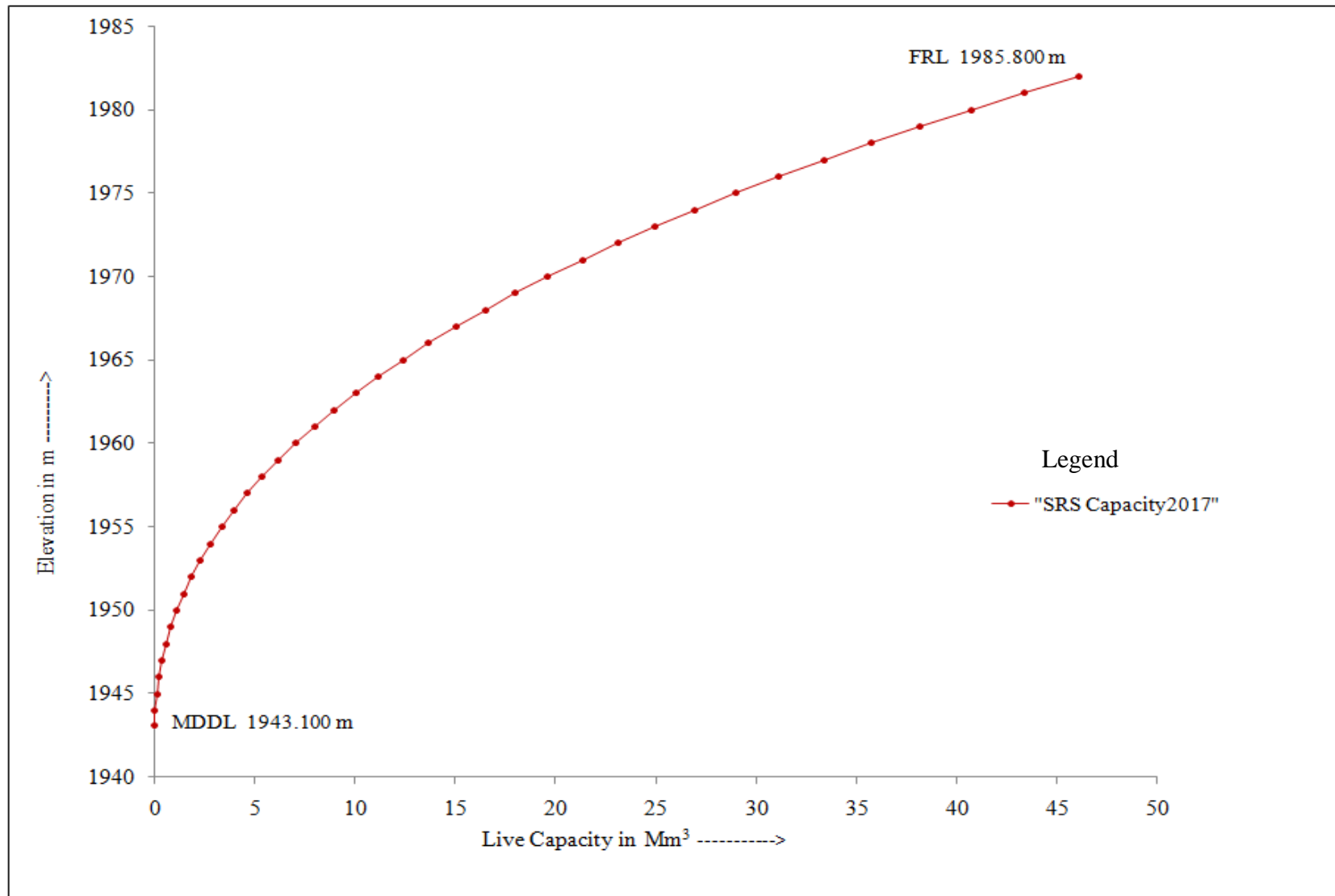


Figure 9 : SRS Elevation-Capacity curve for Avalanche reservoir, Tamil Nadu

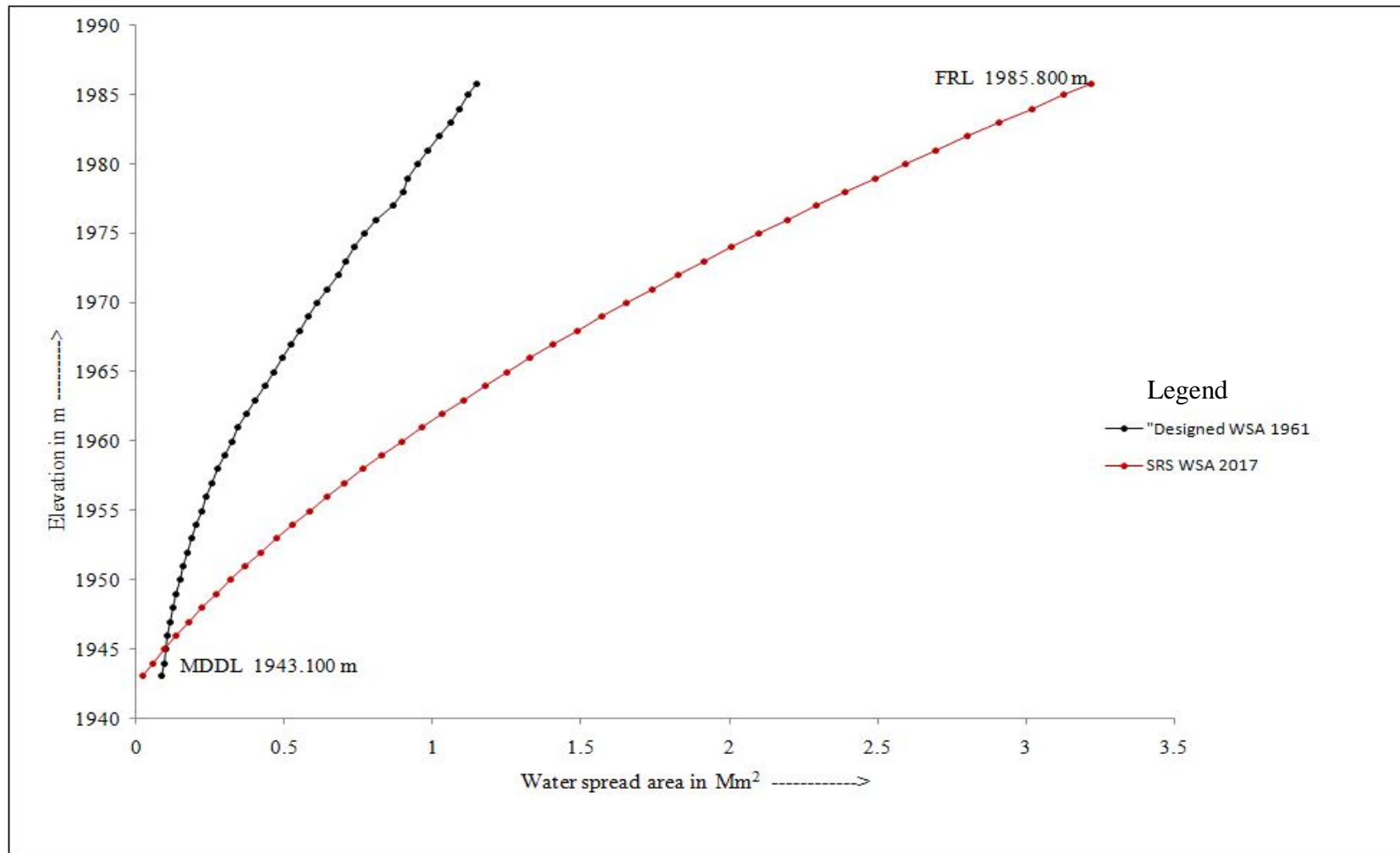


Figure 10 : Elevation - Area curve for different years for Avalanche reservoir, Tamil Nadu

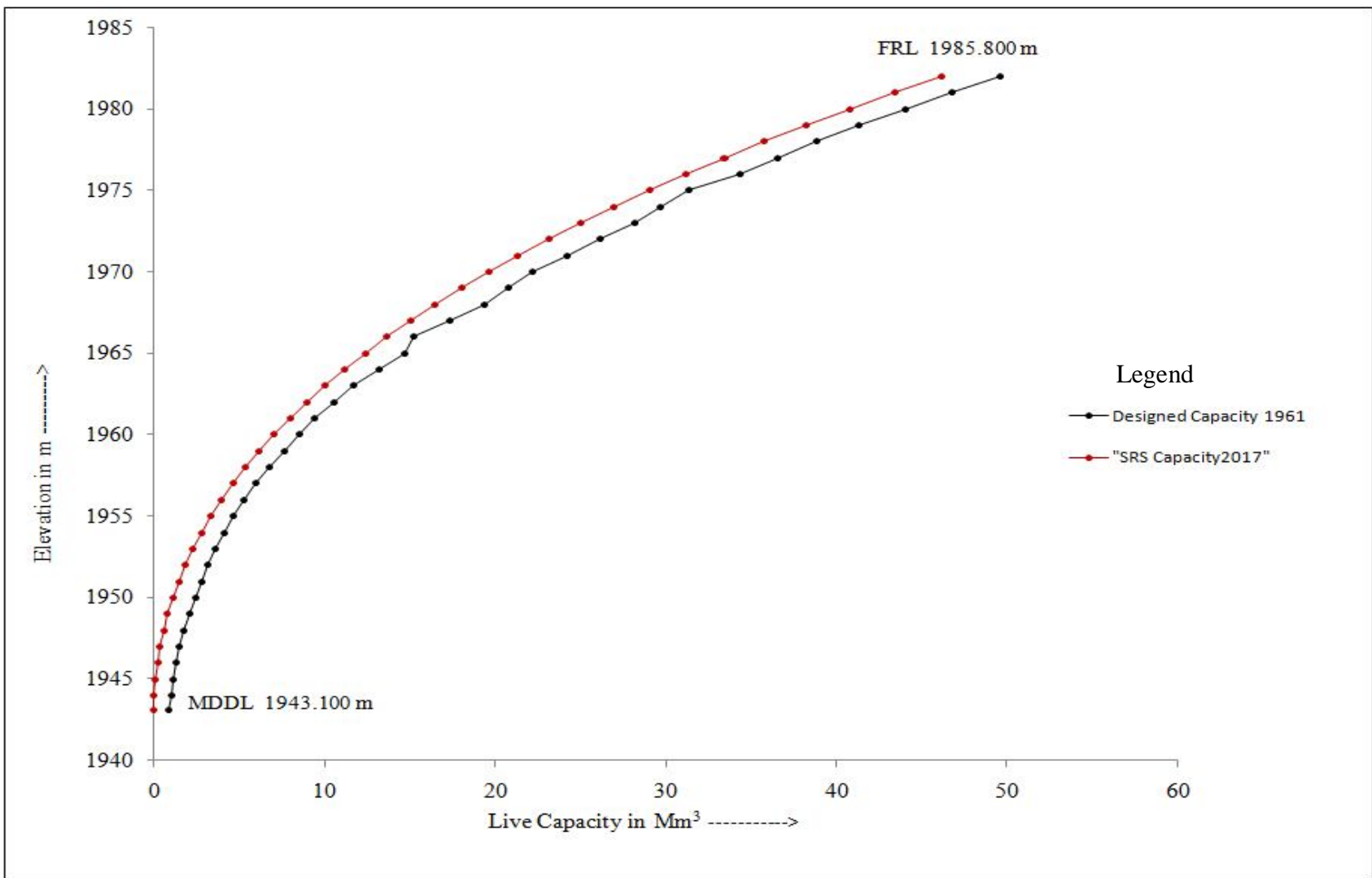


Figure 11 : Elevation - Capacity curve for different years for Avalanche reservoir, Tamil Nadu

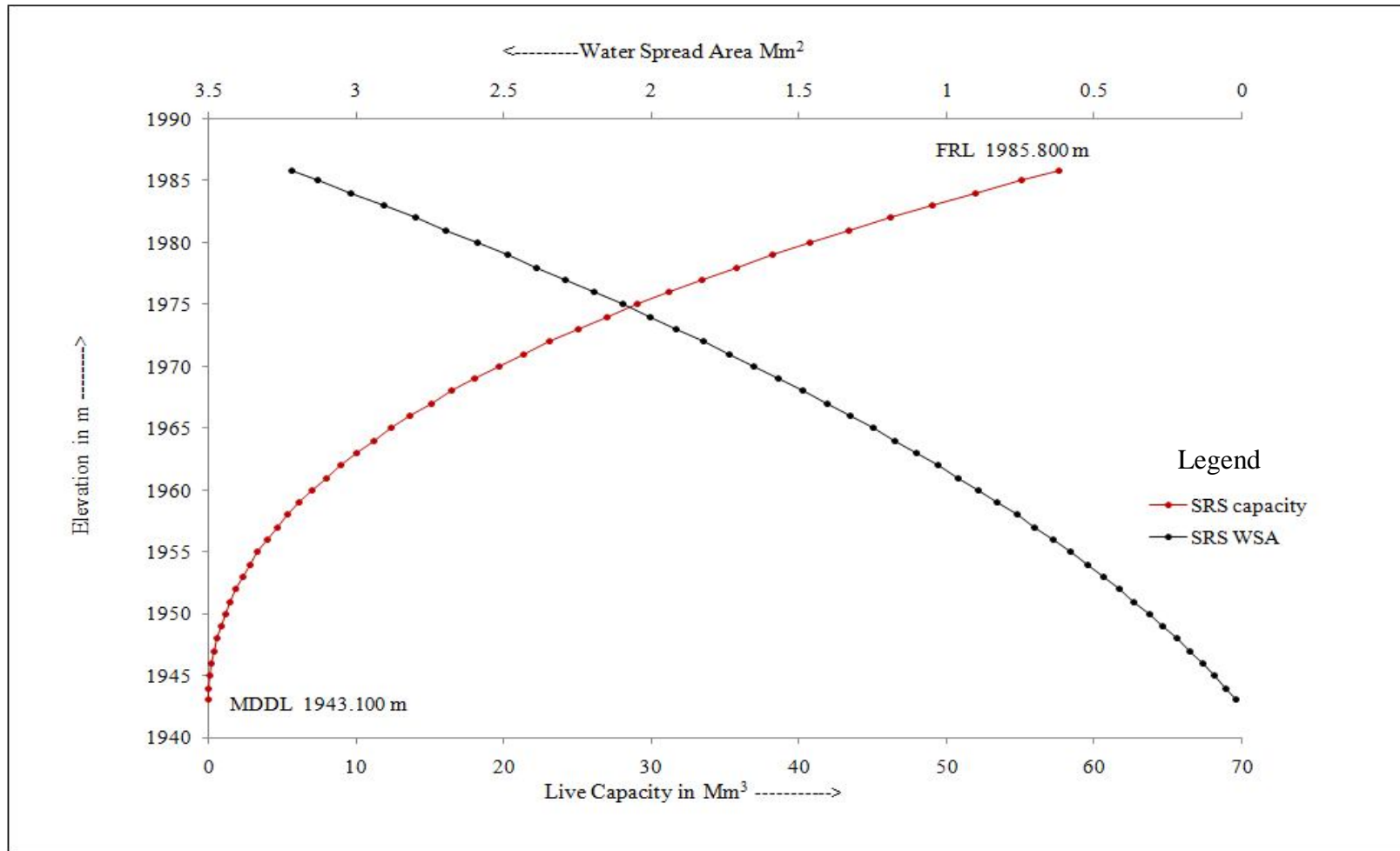


Figure 12 : Modified SRS Elevation-Area - Capacity curve for Avalanche reservoir, Tamil Nadu

11.8 Comparison with earlier surveys

The comparison of water spread area obtained through remote sensing analysis with designed surveyed data is given in Table 6.

Table 6 : Comparison of water spread areas of reservoir (Mm²)

Water elevation m	Design survey 1961	SRS survey 2016-17
MDDL 1943.100	0.085	0.023
1944.000	0.093	0.057
1945.000	0.100	0.096
1946.000	0.104	0.136
1947.000	0.112	0.179
1948.000	0.122	0.223
1949.000	0.135	0.269
1950.000	0.148	0.317
1951.000	0.160	0.367
1952.000	0.172	0.419
1953.000	0.186	0.472
1954.000	0.201	0.527
1955.000	0.218	0.584
1956.000	0.236	0.643
1957.000	0.255	0.703
1958.000	0.276	0.765
1959.000	0.299	0.830
1960.000	0.321	0.896
1961.000	0.344	0.963
1962.000	0.371	1.033
1963.000	0.399	1.104

1964.000	0.434	1.177
1965.000	0.466	1.252
1966.000	0.494	1.329
1967.000	0.522	1.407
1968.000	0.550	1.488
1969.000	0.579	1.570
1970.000	0.608	1.654
1971.000	0.644	1.739
1972.000	0.680	1.827
1973.000	0.708	1.916
1974.000	0.737	2.007
1975.000	0.768	2.100
1976.000	0.809	2.195
1977.000	0.869	2.292
1978.000	0.903	2.390
1979.000	0.917	2.490
1980.000	0.948	2.592
1981.000	0.986	2.696
1982.000	1.024	2.801
1983.000	1.062	2.908
1984.000	1.089	3.018
1985.000	1.119	3.129
FRL 1985.800	1.149	3.219

The comparison of present live storage capacity with designed capacity is given in Table 7.

Table 7 : Comparison of live storage capacity of reservoir (Mm³)

Water elevation m	Design survey 1961	SRS survey 2016-17
MDDL 1943.100	0.852	0.000
1944.000	1.028	0.035
1945.000	1.121	0.110
1946.000	1.296	0.226
1947.000	1.486	0.383
1948.000	1.765	0.584
1949.000	2.064	0.830
1950.000	2.435	1.123
1951.000	2.817	1.465
1952.000	3.180	1.857
1953.000	3.588	2.302
1954.000	4.113	2.801
1955.000	4.682	3.356
1956.000	5.296	3.969
1957.000	5.989	4.642
1958.000	6.772	5.376
1959.000	7.614	6.174
1960.000	8.502	7.036
1961.000	9.428	7.965
1962.000	10.543	8.963
1963.000	11.704	10.031
1964.000	13.157	11.171
1965.000	14.668	12.386

1966.000	15.211	13.676
1967.000	17.354	15.044
1968.000	19.368	16.491
1969.000	20.777	18.020
1970.000	22.222	19.632
1971.000	24.214	21.328
1972.000	26.146	23.111
1973.000	28.137	24.982
1974.000	29.657	26.944
1975.000	31.374	28.998
1976.000	34.305	31.145
1977.000	36.566	33.388
1978.000	38.879	35.729
1979.000	41.330	38.169
1980.000	44.037	40.709
1981.000	46.769	43.353
1982.000	49.596	46.101
1983.000	52.482	48.956
1984.000	54.845	51.919
1985.000	57.770	54.992
FRL 1985.800	60.610	57.530

11.9 Field visit and ground truth

Field visit of the reservoir area has been carried out on 28th December 2019 for ground truth verification. Some predetermined ground truth points marked on the satellite image printouts along with their latitude and longitude values have been verified, with the help of GPS (Trimble Juno) receiver. Following officers were present during this visit.

Officers from Resources Engineering Center, MERI, Nashik

- i) Shri. M. M. Kulkarni, Executive Engineer

Team from Avalanche reservoir project

- i) Shri. N. Nagendran, Assistant Executive Engineer
- ii) Shri. S. Yuvaraj, Assistant Engineer

Latitude and longitude values of the reservoir components have been recorded during the field visit. Reservoir levels used in the present analysis have been confirmed in field visit. The reservoir level on the day of visit was observed 1954.71 m. The Photographs of ground truth scenario are shown in Annexure III.

12. Results and Discussions

The loss in live storage capacity of the reservoir in remote sensing survey (2016-17) due to sedimentation since original survey (1961) is given in table 8.

Table 8 : Live storage capacity loss due to sedimentation from original survey

Details	Design survey (1961)	SRS survey (2016-17)
Live capacity (MCM) at FRL +1985.800 m	60.610	57.530
Loss in capacity (MCM)	-	3.080
% Live capacity loss (since 1961)	-	5.082
Annual % live capacity loss	-	0.091
% Live capacity loss between two consecutive surveys (of the original capacity)	-	5.082 %
% Loss in live storage between the survey since impoundment	-	5.082 %

The following observations are recorded from the present study.

- Present live capacity (year 2016-2017) of Avalanche reservoir is found as 57.530 Mm³. Modified SRS elevation-area-capacity values are given in Table 5 and Figure 12.

13. Limitations

The sedimentation survey using Remote Sensing Technique has following limitations

- The remote sensing based capacity estimation works between the operating levels i.e. MDDL to FRL only. Thus changes can be estimated only in live capacity of reservoir.
- The cloud free satellite data throughout reservoir operation in single year is not possible. As such data from different years are selected.
- General error can creep in the identification of tail end of reservoir, particularly in the rainy season. Reservoir authorities have been consulted to remove this ambiguity.

14. Conclusions

Following conclusions can be drawn from the study:

- The live storage capacity of Avalanche reservoir is 57.530 Mm³ in year 2016-17.
- Capacity loss of 5.082% in live storage is observed in a period of 56 years since first impounding in 1961.
- Annual live capacity loss works out to 0.055%.
- The design WSA table which was provided by field authorities is inconsistent with the design elevation capacity table/ curves.

References

CWC (2015), Compendium of silting of reservoir in India, Technical report on silting of reservoir in India, WS and RS directorate, Central Water Commission, New Delhi.

Central Water Commission, Technical reports on reservoir capacity estimation using satellite remote sensing for different reservoirs. RS Directorate, New Delhi.

R. V. Panse., R. V. Shrigiriwar M. B. Nakil, M. M. Kulkarni, S. A. Gaikwad, (2015), Sedimentation Assessment of Krishnagiri reservoir, Maharashtra through satellite remote sensing, Technical Report, MERI, Nashik and CWC, Delhi.

Varshney, R.S., (1997), Impact of siltation on the useful life of large reservoirs, State of art report of INCOH, No. INCOH/SAR-11/97, NIH, Roorkee.

Annexure I

Salient Features

A	Location		
	Village	:	Mullikur
	Taluka	:	Kundah
	District	:	Nilgiris
	State	:	Tamil Nadu
	Longitude	:	11 ⁰ 19' 23"N
	Latitude	:	76 ⁰ 36' 40" E
	River	:	Avalanche Stream
B	Hydrology		
	Catchment area	:	58.534 sq km
C	Masonry and Earthen Dam		
	Length of dam	:	365.740 m
	Height of the dam	:	57 m
	Foundation		Hard Granite Rock
D	Capacity of Dam		
	Gross storage capacity at FRL	:	61.520 Mm ³
	Dead storage capacity	:	0.910 Mm ³
	Live capacity	:	60.610 Mm ³
	Discharge capacity	:	705.000 cumecs
	Type	:	Masonry Gravity
	Type No., and Size of spillway	:	Lift type-2 Nos., 12.19 m x 6.1 m
E	Reservoir Data		
	Maximum water level	:	+1985.800 m
	Full reservoir level	:	+1985.800 m
	crest level of dam	:	+1979.700 m
	Minimum Draw down Level	:	+1943..100m
	Year of completion	:	1961
	Purpose	:	Storage cum Forebay Dam

Annexure II

Reservoir Levels Pertaining to Cloud Free Satellite Data

Path/Row – 99 / 65	Gross storage capacity at FRL – 61.520 Mm ³
FRL – 1985.800 m	Design live storage – 60.610 Mm ³
MDDL - 1943.100 m	Dead storage capacity – 0.910 Mm ³

Date of pass	Reservoir level (m)	Capacity covered (Mm ³)
1	2	3
17 - Feb - 2017	1958.110	7.774
31 - Dec - 2016	1961.550	10.957
25 - Nov - 2016	1964.240	14.443
20- Mar - 2018	1975.090	32.540
19 - Jan - 2018	1976.160	35.717
02 - Jan - 2019	1981.370	48.630
15 - Nov - 2018	1984.240	56.261
Variation in capacity		(56.261-7.774) = 48.487
% variation of live storage		(48.487/60.610)*100 = 80.00%

Annexure III

Ground Truth Scenario



Masonry dam



Downstream side



Vertical gate



Interconnecting tunnel gate



Upstream side of dam



Top bund level



Submerged area



Water gauge level



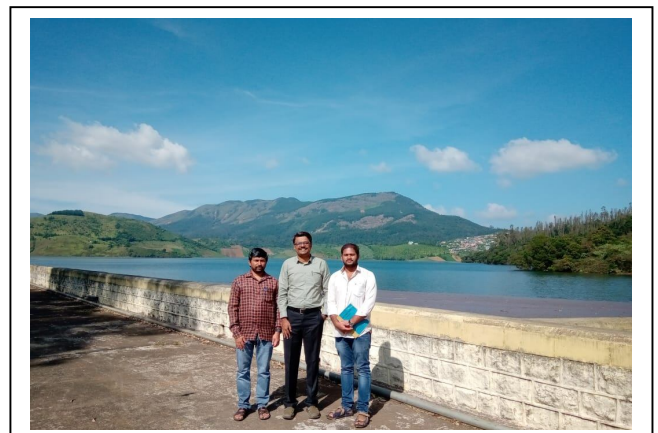
Power house



Turbid water



Forest cover



Ground truth team

Contact Details

Director,
Remote Sensing Directorate,
Central Water Commission
425(N), Sewa Bhavan, RK Puram
New Delhi- 110066.
Tel-Fax : 011-29583429.
e-mail : rsdte@nic.in.

Superintending Engineer,
Maharashtra Engineering Research Institute,
Nashik-422004.
Fax : 0253 2530764.
Phone : 0253 2534676.
Web Site : www.merinashik.org.
e-mail : eerecwr@gmail.com.

Superintending Engineer (civil),
Generation circle, TNEB,
Kundaha , Dist. The Nilgiris,
Tamil Nadu-643219.
Tel-Fax :0423-2508001
e-mail : segkun@tnebnet.org.

Executive Engineer (civil),
Generation circle, TNEB,
Kundaha bridge post ,
Dist. The Nilgiris,
Tamil Nadu-643219.
Tel- :0423-2508272
e-mail : eekundah@tnebnet.org.

Executive Engineer,
Resources Engineering Centre,
Maharashtra Engineering Research Institute,
MERI, Nashik-422004.
Tel-Fax : 0253-2534676.
e-mail : eerecwr@gmail.com.