



उपग्रह दूरस्थ संवेदन द्वारा
येलेरु जलाशय, आंध्र प्रदेश का अवसादन आंकलन
**Sedimentation Assessment of Yeleru Reservoir,
Andhra Pradesh, through Satellite Remote Sensing**



Contact Address –
Director,
Remote Sensing Directorate,
Central Water Commission
425(N), Sewa Bhavan, RK Puram
New Delhi- 110066
Tel-Fax : 011-29583429
e-mail : rsdte@nic.in



भारत सरकार
दूरस्थ संवेदन निदेशालय
केन्द्रीय जल आयोग, नई दिल्ली

Government of India
Remote Sensing Directorate
Central Water Commission, New Delhi

SEPTEMBER 2020



Sedimentation Assessment of Yeleru Reservoir, Andhra Pradesh, through Satellite Remote Sensing

Project Team

Environment Management Org.,
Central Water Commission,
New Delhi.

Consultant

Maharashtra Engineering Research
Institute, Nashik,
Maharashtra.

Overall Guidance

Shri. Amrendra Kumar Singh
Chief Engineer,
CWC, New Delhi.

Shri. A. P. Kohirkar,
Director General,
MERI, Nashik.

Shri. Rishi Srivastava
Director, RS Directorate,
CWC, New Delhi.

Shri. S. S. Deshmukh,
Superintending Engineer,
MERI, Nashik.

Project Incharge

Shri. Ashish Awasthi
Dy. Director, RS Directorate,
CWC, New Delhi.

Shri. Makarand Kulkarni,
Executive Engineer,
REC, MERI, Nashik.

Supporting Team

Mr. Abuzar Gaffari
Asst. Director, RS Directorate,
CWC, New Delhi.

Shri. Sunil Gaikwad,
Sub Divisional Engineer,
REC, MERI, Nashik.

Ms. Shraddha G. Kuwar,
Asst. Engineer Grade-II,
REC, MERI, Nashik.

FOREWORD

Sedimentation is a byproduct of erosion in the catchment area of the reservoir and therefore, lesser the rate of erosion, smaller is the sediment load entering the reservoir. Type of soil, drainage density, vegetation, rainfall intensity and duration, shape of the catchment and land use/land cover affect the erosion. Deposition of silt takes place in various parts of reservoir which gradually reduces its capacity. Dead storage capacity as well as live storage capacity gets affected due to siltation. Information about reduction in the storage capacity is necessary for the planning and operational purposes. In some of the reservoirs, the rate of siltation has been higher than what was considered at the planning stage. Therefore, it has become necessary to conduct surveys in all the existing reservoirs for ascertaining siltation rate and consequently to assess their useful life. The data will also be useful for deriving siltation indices for different regions and river basins for use in the future design of the reservoirs. These surveys will enable selection of appropriate measures for controlling sedimentation along with efficient management and operation of reservoirs. The conventional techniques like boat mounted eco-sounder, HYDAC etc. are time consuming as well as costly. Remote sensing technique can be used to calculate the present live storage capacity of a reservoir due to its synoptic and repetitive coverage. These surveys based on remote sensing data are faster, economical and reliable.

Central Water Commission has been regularly involved in carrying out sedimentation assessment studies of various reservoirs through remote sensing techniques. As a part of 50 reservoirs study which were proposed to be taken up under the plan scheme “Research & Development Programme in Water Sector” during the period 2017-20 (i.e. beyond 12th Five Year Plan) / upto the end of 14th Finance Commission, the work “Sedimentation assessment study of Forty (40) reservoirs in India through Remote Sensing Technique” was awarded to MERI, Nashik. Rest will be carried out in-house. Out of these forty (40) reservoirs, the study of twenty three (23) reservoirs were found feasible and hence, completed. The balance were found non feasible due to non-availability of cloud free imageries or non-attainment of FRL/MDDL.

I would like to compliment Shri Rishi Srivastava, Director (Remote Sensing Dte), Shri. Ashish Awasthi, Dy. Director (Remote Sensing Dte) and other officers and staff of Remote Sensing Directorate for their dedicated efforts in bringing out this report. I would also like to compliment Shri. Makarand Kulkarni, Executive Engineer (REC, MERI) and his team for timely completion of the report.

(Amrendra Kumar Singh)
Chief Engineer (EMO)
Central Water Commission

Acknowledgement

The Project Team is thankful for the guidance provided by Chief Engineer (EMO), CWC, and Director, Remote Sensing Directorate, CWC, New Delhi in completing the work of “Sedimentation Assessment Study of Forty (40) Reservoirs in India through Remote Sensing Technique” and in particular the present study of Yeleru Reservoir.

The project team is thankful to the Secretary (CAD), Water Resources Department, Government of Maharashtra for his keen interest and constant encouragement in completion of this study. Our special thanks are due to Shri. A. P. Kohirkar, Director General, MERI and Shri. S. S. Deshmukh, Superintending Engineer, MERI for their valuable support and motivation for carrying out this work.

Our thanks are also due to Shri. Krishna Rao, Superintending Engineer, Irrigation Works Circle, Dowlaiswaram, East Godavari District, Andhra Pradesh for the keen interest shown in the work. We are also thankful to Shri. Narasimha Raju, Executive Engineer, Yeleru Reservoir Project Division, Yeleswaram, East Godavari District, Andhra Pradesh; Shri. M. Suresh Kumar, Deputy Executive Engineer, Shri. V. P. R. Chowdary, Assistant Executive Engineer of Yeleru Reservoir Project Sub - Division No. 3, Yeleswaram, East Godavari District, Andhra Pradesh for supplying all relevant data required for the present analysis.

PROJECT TEAM

CONTENTS		
Sr. No.	Description	Page No.
	Foreword	I
	Acknowledgement	II
	Contents	III
	List of Tables and List of Figures	IV
	Abbreviations and Units Used	V
	Executive Summary	VI
1	Introduction	1
2	Sources and Mechanism of Sedimentation	2
3	Control of Sedimentation	6
4	Remote Sensing in Reservoir Sedimentation	7
5	Objectives	8
6	Study Area	8
7	Previous Surveys	8
8	Approach of Present Study	11
9	Data	11
	9.1 Field data	11
	9.2 Satellite data	12
	9.3 Criteria for satellite dates selection	14
10	Software Used	15
11	Methodology	15
	11.1 Procedural flow chart	16
	11.2 Data loading	16
	11.3 Image geo-referencing	16
	11.4 Area extraction	17
	11.5 Water spread area extraction	17
	11.6 Water spread area at regular interval	19
	11.7 Calculation of reservoir capacity	19
	11.8 Comparison with earlier surveys	27
	11.9 Field visit and ground truth	29
12	Results and Discussions	29
13	Limitations	30
14	Conclusions	30
	References	31
	Annexures	
	I Salient Features	32
	II Reservoir Levels Pertaining to Cloud Free Satellite Data	33
	III Ground Truth Scenario	34

<u>Table No.</u>	<u>List of Tables</u>	<u>Page No.</u>
1	Status of cloud free levels achieved during 2016 to 2019	11
2	Details of satellite data	12
3	Range of NDWI values for Yeleru reservoir	18
4	Water spread areas extracted from satellite data	18
5	Areal extent and cumulative live storage capacity of reservoir at regular interval defined from graph	20
6	Comparison of water spread areas of reservoir (Mm ²)	27
7	Comparison of live storage capacity of reservoir (Mm ³)	28
8	Live storage capacity loss due to sedimentation from original survey	29

<u>Figure No.</u>	<u>List of Figures</u>	<u>Page No.</u>
1	Conceptual sketch of density currents in a reservoir	4
2	Longitudinal patterns of sediment deposition in reservoirs	5
3	Conceptual sketch of different levels in a reservoir	6
4	Index map of Yeleru reservoir, Andhra Pradesh	10
5	FCC's of Yeleru reservoir, Andhra Pradesh	13
6	Flow chart showing methodology for reservoir capacity estimation	16
7	Water spread areas on different dates of satellite pass	21
8	SRS Elevation - Area curve for Yeleru reservoir, Andhra Pradesh	22
9	SRS Elevation - Capacity curve for Yeleru reservoir, Andhra Pradesh	23
10	Elevation - Area curve for different years for Yeleru reservoir, Andhra Pradesh	24
11	Elevation - Capacity curve for different years for Yeleru reservoir, Andhra Pradesh	25
12	Modified SRS Elevation-Area-Capacity curve for Yeleru reservoir, Andhra Pradesh	26

Abbreviations

AOI	Area of Interest
μm	Micrometer
CWC	Central Water Commission
DGPS	Differential Global Positioning System
ERS	European Remote Sensing Satellite
FCC	False Color Composite
FRL	Full Reservoir Level
IR	Infra Red
IRS	Indian Remote Sensing Satellite
LISS	Linear Imaging Self Scanning Sensor
MDDL	Minimum Draw Down Level
MERI	Maharashtra Engineering Research Institute
MOU	Memorandum of Understanding
MWL	Maximum Water Level
NDVI	Normalized Difference Vegetation Index
NDWI	Normalized Difference Water Index
NIR	Near Infra Red
NRSC	National Remote Sensing Centre
R	Red band
SAT	Shift Along Track
SQRT	Square Root
SRS	Satellite Remote Sensing
WSA	Water Spread Area

Units Used

ha	Hectare
km	Kilometer
m	Meter
Mm²	Million square meter
Mm³	Million cubic meter
sq km	Square kilometer
sq mi	Square mile

EXECUTIVE SUMMARY

Water resources sector has got high priority in all our developmental plans and accordingly large number of dams have been constructed to supply water for domestic, irrigation and industrial purposes. Natural processes like erosion in the catchment area and its deposition in various parts of the reservoir gradually, reduce the capacity of the reservoir. Dead as well as live storage get affected by it. The information about the reduction in capacity is necessary for all planning and operational purposes, which can be obtained through capacity surveys done at regular interval. The Remote Sensing technique can be used to calculate present capacity of the reservoir. It is very useful due to its simple analysis procedure and repetitive coverage by imagery. The surveys based on remote sensing data are faster, economical and more reliable. Department of Water Resources, River development and Ganga Rejuvenation, Ministry of Jalshakti, Government of India has initiated the programme to evaluate capacity of various reservoirs in the country. Accordingly the Central Water Commission has entrusted MERI, Nashik the work of “Sedimentation Assessment Study of Forty (40) Reservoirs in India through Remote Sensing Technique”. The present study is in regard to Yeleru Reservoir, Andhra Pradesh, India.

Present study aims in updating the elevation-area-capacity curve of Yeleru Reservoir, Andhra Pradesh, and finding the capacity loss due to sedimentation in live storage. For carrying out the analysis, Resourcesat 2 and Resourcesat 2A LISS III data with 23.5 m resolution have been used. Satellite data for eight passes falling between Minimum RL (70.900 m) and Maximum RL (85.760 m) are used for the analysis.

The Yeleru dam is located on the Yeleru River. The dam site is located near Yeleswaram (V) village in Yeleswaram (V) taluka, East Godavari district. The project has a designed gross capacity of 682.700 Mm³, with live capacity of 508.300 Mm³.

This study reveals that the present live capacity of reservoir is reduced by 0.169 Mm³ witnessing a loss of 0.033 % in a period of 27 (1991-2018) years. This amounts to 0.001 % loss per annum in live storage since the impoundment.

SEDIMENTATION ASSESSMENT OF YELERU RESERVOIR, ANDHRA PRADESH, THROUGH SATELLITE REMOTE SENSING

1. Introduction

India – the second largest country in the world in terms of population – has about 17.3% of world's population, about 4% of world's water resources, and 2.44% of total geographical land area of the world. Therefore, in spite of having an average annual average precipitation to the tune of more than 1105 mm/year, the population density (lack of land resources) and per capita water resources availability make India a water-stressed country, as a whole. However, at a regional or basin level, many areas in the country are water-scarce or severely water-scarce owing to the spatial and temporal variability of water resources.

It is estimated that average annual precipitation over India is about 3880 BCM. Out of this precipitation, the average annual water resources availability of the country is about 1999.2 BCM, as estimated by Central Water Commission (CWC) in 2019. The water resources availability situation gets more murkier due to topographical and other constraints. Due to this, the total utilisable water resources in the country are about 1122 BCM (690 BCM of surface water and 432 BCM of groundwater). On one hand, the per-capita water resource availability is reducing due to increasing population and on the other, per-capita water usage is increasing due to industrialisation, urbanisation and change in lifestyles or dietary habits, making the available water resources still dearer.

India has typical monsoon-based climate where more than 75% rainfall occurs in three months i.e. July, August, and September. The total number of rainy days typically are in the tune of only 20-25 days per year (100-150 hours of rain per year) for most parts of the country. As a result, the bulk of annual water (75-80%) in rivers is available only in these three months. Therefore, in order to sustain life and other activities throughout the year from resources that are available only through 20-25 rainy days, it is absolutely essential to store the water in appropriately-sized storage structures (depending upon the topography and hydrology of the area).

So far, India has developed just 257.812 BCM as live storage capacity and 46.765 BCM is under construction. Realising the importance of storage structures, a large number of reservoirs have been built, since independence, during each plan in almost

all river basins, except Ganga and Brahmaputra, to tap the available surface water and to utilize it as and when needed. The capacity of reservoirs is gradually reducing due to silting and hence sedimentation of reservoir is of great concern for all the water resources development projects.

Correct assessment of the sedimentation rate is essential for assessing useful life of the reservoir as well as optimum reservoir operation schedule. Since 1958, when it was established that the live storage of reservoir is getting reduced due to siltation, a systematic effort has been made by various departments / organizations to evaluate the capacity of reservoirs. Various techniques like boat echo sounder, etc. being replaced by hydrographic data acquisition system (HYDAC) and HITECH method using Differential Global Positioning System (DGPS). The conventional techniques are found either time consuming or costly and require considerable manpower. Remote sensing technique to calculate the present live capacity of reservoir is found to be very useful in this context due to its synoptic and repetitive coverage. The surveys based on remote sensing data are faster, economical and more reliable.

These surveys will enable selection of appropriate measures for controlling sedimentation along with efficient management and operation of reservoirs thereby deriving maximum benefits for the society.

This report covers the study of Yeleru reservoir, Andhra Pradesh by Central Water Commission, New Delhi.

2. Sources and Mechanism of Sedimentation

The principal sources of sediments are as follows:

1. Deforestation
2. Excessive erosion in the catchment
3. Disposal of industrial and public wastes
4. Farming
5. Channelisation works
6. Human activities
7. Land development, highways, and mining

The sedimentation is a product of erosion in the catchment areas of the reservoir and hence lesser the rate of erosion, smaller is the sediment load entering the reservoir. Various factors govern the erosion, transport and deposition of sediment in the

reservoir. Type of soil, drainage density, vegetation, rainfall intensity and duration, shape of catchment and land use /land cover affect the erosion. Sediment transportation depends upon slope of the catchment, channel geometry and nature of riverbank and bed. Deposition is a function of bed slope of the reservoir, length of reservoir, flow patterns, inflow - outflow rates, grain size distribution, mode of reservoir operation, etc.

In order to obtain the knowledge of sedimentation in the reservoir, it is necessary to study the mechanism of sedimentation, which will help to mitigate reservoir sedimentation, prolong the life span of reservoirs and to take full benefits of reservoirs. The sediment deposition in a reservoir depends on the following:

- Longitudinal and lateral valley shape
- Length and shape of reservoir
- Flow patterns in reservoir
- Capacity to inflow volume ratio (trap efficiency)
- Grain size distribution of sediment
- Water and sediment discharges
- Mode of reservoir operation
- Nature of incoming floods

Reservoirs created by dams on rivers lose their storage capacity due to sedimentation. As water enters a reservoir, its velocity diminishes because of the increased cross-sectional area of the channel. If the water stored in the reservoir is clear and the inflow is muddy, the two fluids have different densities and the heavy turbid water flows along the channel bottom towards the dam under the influence of gravity (Figure 1). This condition is known as "stratified flow" and the underflow is called a "density current". A large proportion of the transported silt eventually gets deposited at different levels of a reservoir and causes reduction not only in dead storage but also in live storage capacities.

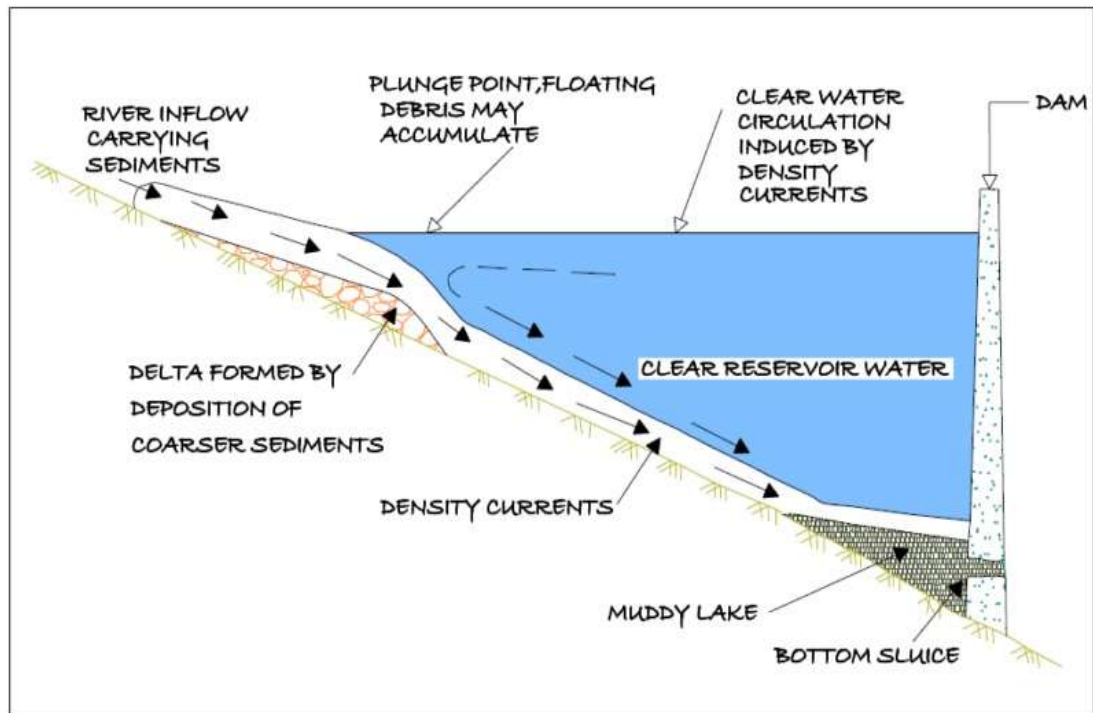


Figure 1: Conceptual sketch of density currents in a reservoir

Earlier it was believed that sediment always gets deposited in the bottom elevations of reservoir affecting the dead storage rather than depositing throughout the full range of reservoir depths. It is now established that deposition takes place throughout the reservoir reducing the incremental capacity at all elevations.

Longitudinal deposition patterns in the reservoir will vary from one reservoir to another as influenced by pool geometry, discharge and grain size characteristic of the inflowing load and reservoir operation. There can be four types of depositing patterns in the reservoir as shown in the Figure 2.

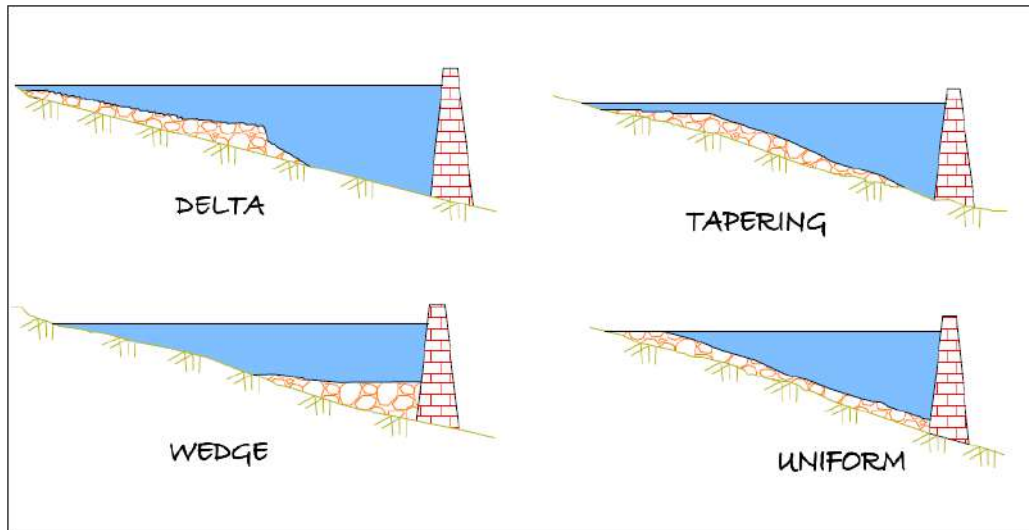


Figure 2: Longitudinal patterns of sediment deposition in reservoirs

Delta deposits contain the coarsest fraction of the sediment load, which is rapidly deposited at the zone of inflow. It may consist entirely of coarse sediment or may also contain a large fraction of finer sediment such as silt. Wedge-shaped deposits are thickest at the dam and become thinner moving upstream. This pattern is typically caused by the transport of fine sediment to the dam by turbidity currents. Wedge-shaped deposits are also found in small reservoirs with a large inflow of fine sediment, and in large reservoirs operated at low water level during flood events, which causes most sediment to be carried into the vicinity of the dam. Tapering deposits occur when deposits become progressively thinner moving toward the dam. This is a common pattern in long reservoirs normally held at high pool level, and reflects the progressive deposition of fines from the water moving toward the dam. Uniform deposits are unusual but do occur. Narrow reservoirs with frequent water level function and small load of fine sediment can produce nearly uniform deposition depths. Several factors like amount of sediment load, size distribution, fluctuations in stream discharge, shape of reservoir, stream valley slope, vegetation at the head of the reservoir, location and size of reservoir, outlets, etc., control the location of sediment deposits in the reservoir.

Figure 3 shows different levels in the reservoir where-in the capacity is affected. Reservoirs operate between Minimum Draw Down Level (MDDL), which is at sluice level to Full Reservoir Level (FRL), which is at dam level. The storage between these two levels is the live storage as shown in Figure 3. The storage below MDDL is the

dead storage. Water stored along the valley bed is known as valley storage.

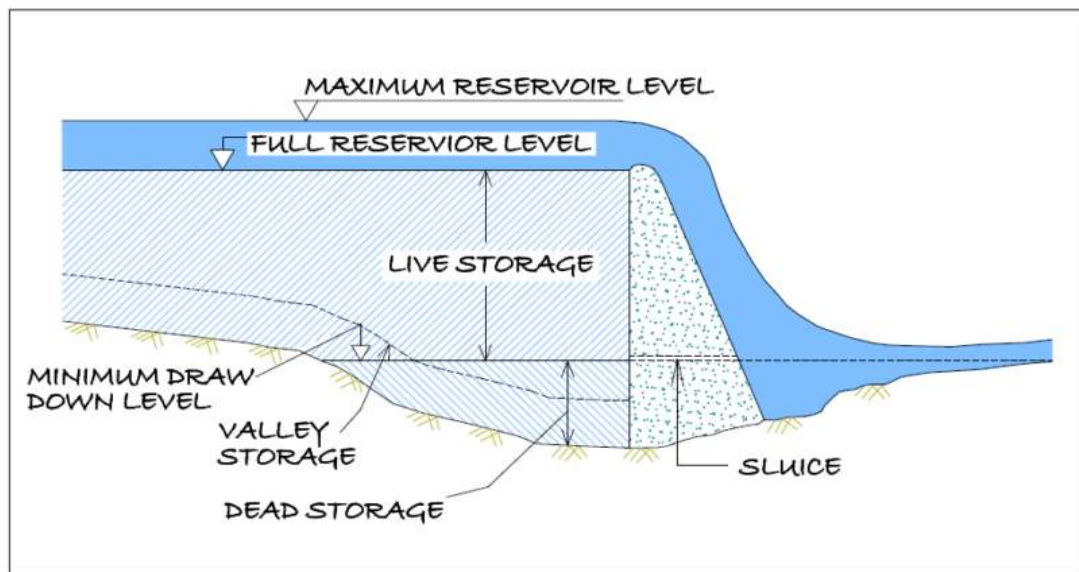


Figure 3 : Conceptual sketch of different levels in a reservoir

3. Control of Sedimentation

Due to the multiple variables involved in reservoir sedimentation, no single control measure can be considered as the most effective. The measures, which can be employed to limit sedimentation and turbidity, are as under:

1. Soil and water conservation measures within the drainage basin, contour ploughing, strip cropping, suitable farming practices, improvement of agricultural land, construction of small dams/ponds/terraces/check dams on gullies
2. Revetment and vegetation cover
3. Evacuation of sediment
4. Reservoir shoreline protection
5. Stream bank and flood plain protection
6. Ridge plantation such as pasture development and reservoir shoreline protection

Silting not only occurs in the dead storage but also encroaches into the live storage zone, which impairs the intended benefits from the reservoirs. Therefore, the problem of sedimentation needs careful consideration. Adequate provision has to be made in the reservoir for accumulation of anticipated quantities of silt. Steps are also required

to be taken to ensure that the storage capacities available are not lost or get reduced by accelerated sedimentation.

4. Remote Sensing in Reservoir Sedimentation

Remote sensing is the art and science of collecting information about earth's feature without being in physical contact with it. Various features on earth surface reflect or emit electromagnetic energy depending upon their characteristics. The reflected radiation depends upon physical properties of the terrain and emitted radiation depends upon temperature and emissivity. The radiations are recorded by the sensors onboard satellite and then are transmitted back to earth. Discrimination between features depends on the fact that the response from different features like vegetation, soil, water is different and discernable. Data received at ground stations, is digitally or visually interpreted to generate thematic maps.

Data acquisition is done from various polar orbiting satellites (orbiting around 800 to 900 km altitude), namely Indian Remote Sensing (IRS) satellite, European Remote Sensing (ERS) satellite, Landsat and SPOT satellites. Data from these satellites are being received and archived by National Remote Sensing Centre (NRSC) at Hyderabad.

Present study utilizes data from Resourcesat 2 and Resourcesat 2A satellite. They have LISS III sensor, which operates in four spectral bands. Three bands are in the visible and near infra red region with spectral band widths as 0.52-0.59 μm , 0.62-0.68 μm and 0.77-0.86 μm and spatial resolution as 23.5 m. Fourth band with spectral bandwidth of 1.55-1.75 μm falls in short wave infra red region.

Reservoir sedimentation surveys are essentially based on mapping of water-spread areas at the time of satellite over pass. It uses the fact that water-spread area of the reservoir reduces with the sedimentation at different levels. The water-spread area and the elevation information are used to calculate the volume of water stored between different levels. These capacity values are then compared with the previously calculated capacity values to find out change in capacity between different levels.

5. Objectives

The objective of the study is to estimate capacity loss of Yeleru reservoir due to sedimentation through satellite remote sensing. Following objectives will be achieved in the study.

- (i) Updating of Elevation-Area-Capacity curve using satellite data in live storage zone of Yeleru reservoir.
- (ii) Estimation of live storage loss due to sedimentation in Yeleru reservoir.

6. Study Area

The Yeleru dam is located near Yeleswaram (V) village in Yeleswaram taluka, East Godavari district, on the Yeleru river. The dam site is located at 17° 18' 00" N latitude and 82° 05' 30" E longitude. The location of the dam is shown in Figure 4 as Index Map.

The Yeleru dam serves dual purpose of irrigation and industrial water supply. The catchment area at the dam site is 2232.000 sq km. The dam was completed in the year 1991. The FRL and MWL of the reservoir is at a level of 86.560 m. The dead storage and live storage capacity of Yeleru dam are 174.400 Mm³ and 508.300 Mm³ respectively.

There are two main canals taking off from the reservoir. The length of right bank canal is 24.000 km. The right bank canal is having a registered ayacut of 10,000.000 acres. The length of left bank canal is 113.300 km. The left bank canal is having a registered ayacut of 1,34,000.000 acres. Salient features of Yeleru project are given in Annexure (I).

7. Previous Surveys

The capacity evaluation study of Yeleru reservoir has been done by Andhra Pradesh Engineering Research Laboratories, Himayatsagar, Hyderabad in year 2007. The satellite image data used in this study is from the year 2004 - 2006. In this study, the satellite images available for minimum water level is at RL 64.650 m and for maximum water level is at RL 86.300 m. Then from RL 64.650 m to lowest bed level RL 47.030 m, the results were extrapolated backward side and the complete gross

storage of the reservoir was covered. The results were worked out against the design gross storage of 682.700 Mm³. As per the survey the revised gross storage was observed to be 627.1281 Mm³ which concludes the loss in gross storage capacity with 55.6419 Mm³ in a period of 15 years.

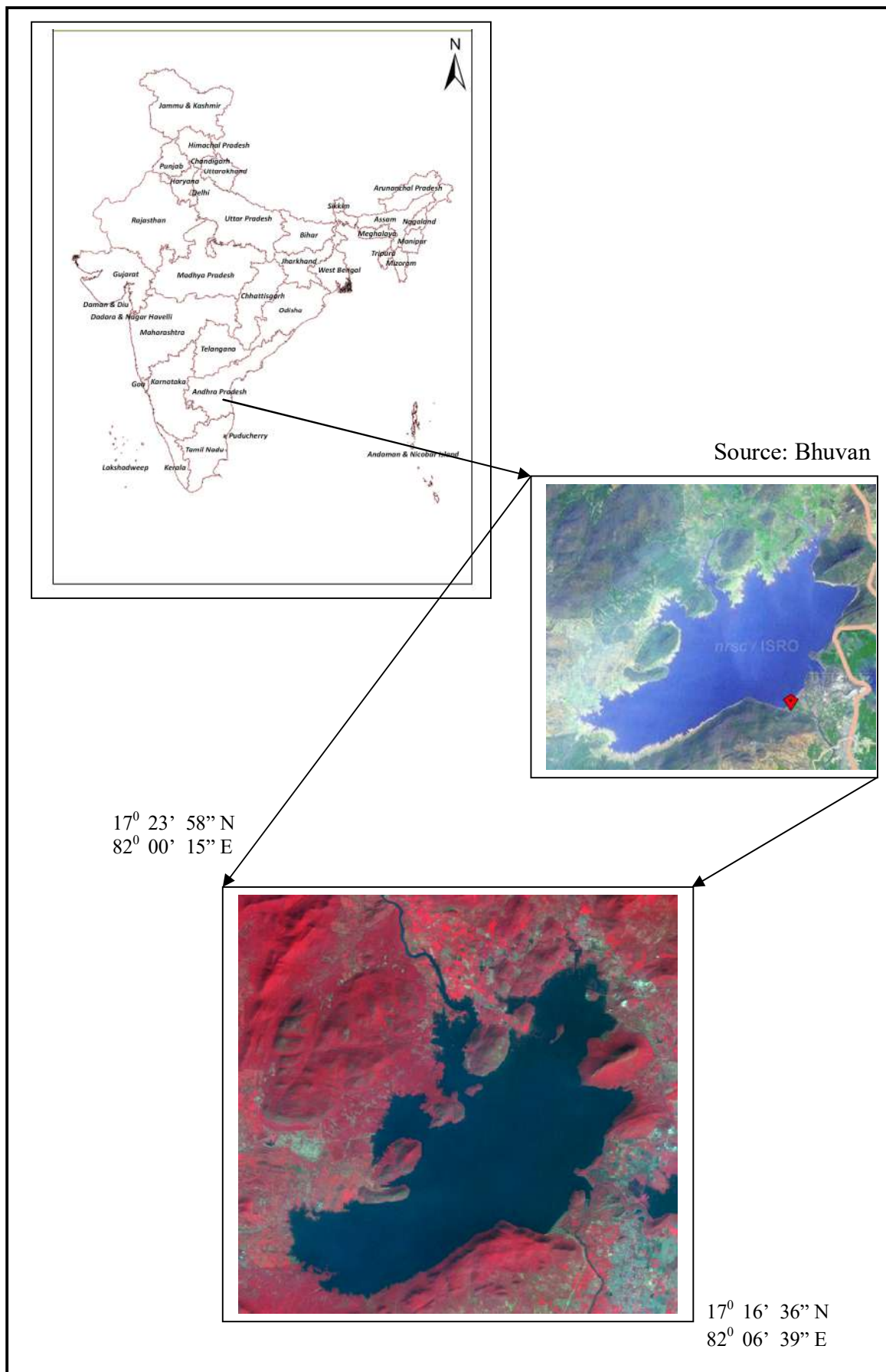


Figure 4 : Index map of Yeleru reservoir, Andhra Pradesh

8. Approach of Present Study

Remote sensing technique is utilized to assess the sedimentation between operating levels of reservoir. This operating range between MDDL (72.540 m) and FRL (86.560 m) varies each year and depends upon yield in the reservoir and utilization of water. During 2016 to 2019 the minimum and maximum levels in this reservoir fluctuated in various ranges. They are shown in Table 1. The cloud free levels in this range are selected for analysis.

Table 1 : Status of cloud free levels achieved during 2016 to 2019

Sr. No.	Water year	Minimum level (m)	Maximum level (m)	Difference of minimum and maximum levels (m)
1	2016-2017	77.660	77.660	0.000
2	2017-2018	70.900	80.940	10.040
3	2018-2019	83.480	85.760	2.280

The information reveals that in the water year 2018-2019, reservoir was filled up to RL 85.760 m close to FRL 86.560 m while it got depleted up to RL 70.900 below the MDDL (72.540 m) in the water year 2017-2018. For present study, one image from water year 2016-2017, five images from water year 2017-2018 and two image from water year 2018-2019 have been used. The year of survey of present study is treated as year 2017-2018.

9. Data

9.1 Field data

Following data set was obtained from Executive Engineer, Yeleru Reservoir Project Division, Yeleswaram for Yeleru reservoir and used in the analysis.

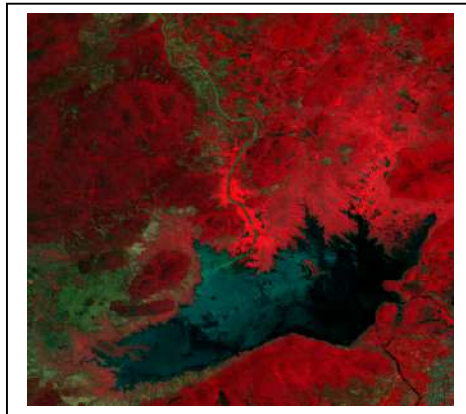
- Index map of reservoir
- Latitude and longitude of the reservoir
- Original area capacity table at 1.000 m interval.
- Salient features of the project
- Reservoir levels for given dates of satellite pass.

9.2 Satellite data

Resourcesat 2 and Resourcesat 2A LISS III images of 23.5 m resolution having Path 103, Row 60 have been used in present analysis. The FCC of the images are as given in Figure 5. The dates of satellite pass of selected images and corresponding reservoir levels are given in Table 2.

Table 2 : Details of satellite data

Sr. No.	Date of pass	Elevation (m)
1	15-May-18	70.900
2	28-Mar-18	73.270
3	04-Mar-18	75.430
4	27-Dec-16	77.660
5	03-Jan-18	79.650
6	28-Nov-17	80.940
7	15-Feb-19	83.480
8	29-Dec-18	85.760



15 - May - 2018 (70.900 m)



28 - Mar - 2018 (73.270 m)



04 - Mar - 2018 (75.430 m)



27 - Dec - 2016 (77.660 m)



03 - Jan - 2018 (79.650 m)



28 - Nov - 2017 (80.940 m)

Figure 5 : FCC's of Yeleru reservoir, Andhra Pradesh (Conti..)

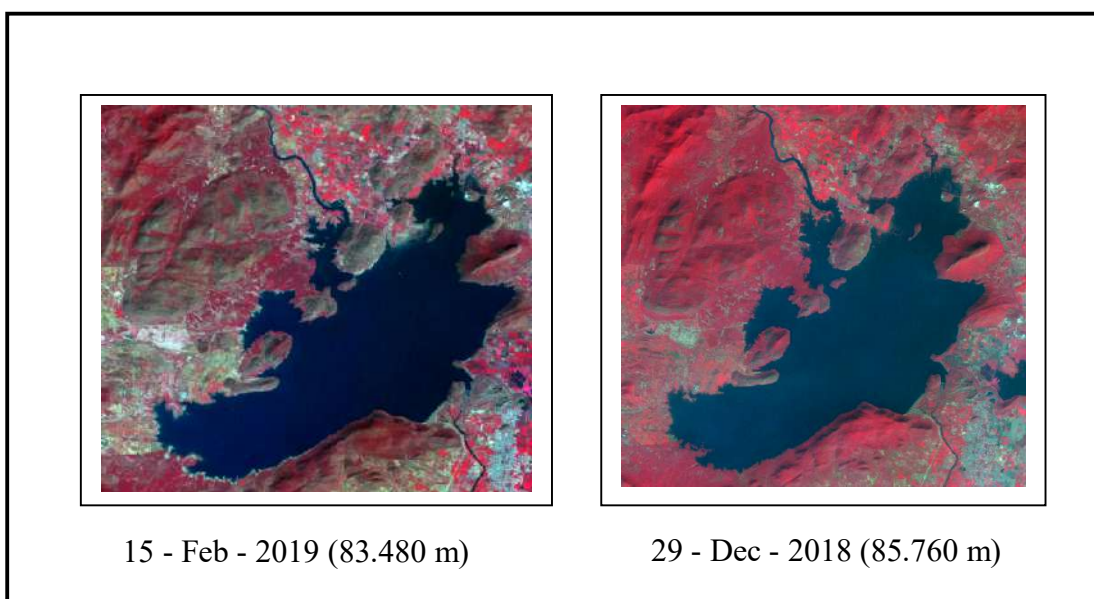


Figure 5 : FCC's of Yeleru reservoir, Andhra Pradesh

9.3 Criteria for satellite dates selection

The selection of the satellite data for the present study is based on the following guidelines given in the MOU signed between CWC, New Delhi and MERI, Nashik.

- (i) To carry out the feasibility assessment of the given reservoir regarding availability of cloud free satellite data of dates of satellite pass corresponding to reservoir levels near MDDL as well as near FRL and at uniform interval to the extent possible in between MDDL and FRL for the latest water year or maximum up to two previous water years.
- (ii) To carry out sedimentation analysis through SRS technique to cover the entire live storage zone of the reservoir.
- (iii) In case of inability to cover the entire live storage zone of the reservoir due to non-availability of cloud free satellite data at FRL and MDDL, the study may be taken up if minimum of 80 % of live storage capacity is covered by the available cloud free dates of satellite pass on maximum and minimum reservoir levels.

NRSC website has been browsed to prepare a list of dates of satellite pass over the Yeleru reservoir for the year 2016 to 2019. The reservoir levels on these dates along with corresponding water spread areas and capacities have been obtained from field officers.

The reservoir has been depleted up to 70.900 m as against MDDL (72.540 m). The maximum level covered in the present study is 85.760 m, which is near to FRL (86.560 m). Variation in the study level is $(85.760 - 70.900) = 14.860$ m. The difference between FRL and MDDL is $(86.560 - 72.540) = 14.020$ m.

In the present study, storage of 494.381 Mm^3 has been covered as against total live capacity of 508.300 Mm^3 . Thus the percentage live storage covered by this study is 97.26 %. (Annexure II).

Statement giving cloud free dates of satellite pass, reservoir levels, areas and capacities for the Yeleru reservoir has been prepared and submitted to CWC. The CWC has finalized the dates and placed order of images with NRSC, Hyderabad. The data has been received directly to MERI from NRSC, Hyderabad.

10. Software Used

The analysis is done using the software ERDAS IMAGINE Ver. 2010. This software provides facility for satellite image analysis, by different methods.

11. Methodology

The basic approach is to find out the water-spread areas from satellite data for different water levels between MDDL to FRL. The difference between areal spread of water between current year and earlier years is the areal extent of silting at these levels.

The methodology for estimation of live capacity of reservoir using remote sensing consists of following major tasks

- (i) Digital data base creation
- (ii) Estimation of water-spread area
- (iii) Calculation of reservoir capacity
- (iv) Comparison of result with previous surveys
- (v) Estimation of live capacity loss due to sedimentation

11.1 Procedural flow chart

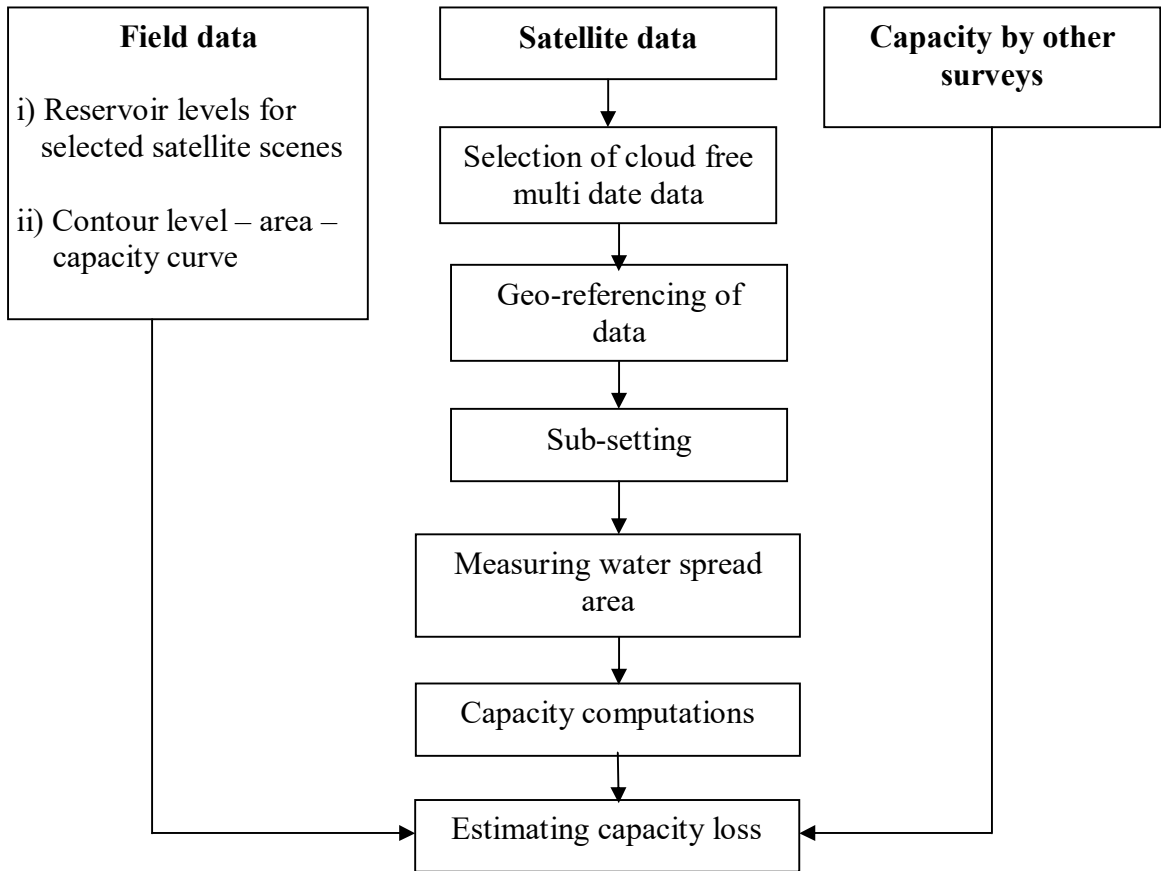


Figure 6 : Flow chart showing methodology for reservoir capacity estimation

11.2 Data loading

All the scenes are loaded in the system. These are listed as different files. They are renamed corresponding to falling levels. It helps in identifying the images during analysis. These files are in .img formats.

11.3 Image geo-referencing

Geo-referenced ready satellite images have been used in the analysis. However, when all the images are superimposed and swiped, slight displacements of images are noticed. Treating the image of the highest water level as the base image all the remaining images are again geo-referenced using image to image option of the ERDAS IMAGINE software.

11.4 Area extraction

A subset of the rectified scene is defined so as to facilitate and use in subsequent analysis. Rectified scene is loaded on the system. A small area around reservoir is extracted from one scene in interactive way. Once the area of interest (AOI) is finalized other scenes are extracted using the same AOI.

11.5 Water spread area extraction

There are various methods for the extraction of water area information from remote sensing imagery, which, according to the number of bands used, are generally divided into two categories, i.e. single-band and multi-band methods.

The multi-band method takes advantage of reflective differences of each involved band. There are two ways to extract water information using the multi-band method. One is through analyzing signature features of each ground target among different spectral bands, finding out the signature differences between water and other targets based on the analysis, and then using an if-then-else logic tree to delineate land from open water.

The other one is a band-ratio approach using two multispectral bands. One is taken from visible wavelengths and is divided by the other usually from near infrared (NIR) wavelengths. As a result, vegetation and land presences are suppressed while water features are enhanced. However, the method can suppress non-water features but do not remove them, and therefore the Normalized Difference Water Index (NDWI) was proposed by Mc Feeters (1996) to achieve this goal.

The NDWI is expressed as follows (Mc Feeters 1996):

$$NDWI = \frac{Green - NIR}{Green + NIR}$$

Where Green is a green band such as TM band 1, and NIR is a near infrared band such as TM band 3.

This index is designed to

- (1) maximize reflectance of water by using green wavelengths;
- (2) minimize the low reflectance of NIR by water features; and
- (3) take advantage of the high reflectance of NIR by vegetation and soil features.

As a result, vegetation and land presences are suppressed while water features are enhanced.

Table 3 : Range of NDWI values for Yeleru reservoir

Date of pass	Minimum value	Maximum value
15-May-18	-0.0109	0.2251
28-Mar-18	0.0864	0.3292
04-Mar-18	0.1204	0.3793
27-Dec-16	0.2457	0.6313
03-Jan-18	0.0521	0.2784
28-Nov-17	0.0760	0.4608
15-Feb-19	0.0832	0.3302
29-Dec-18	0.0119	0.2556

Using the above range of values, water spread areas are extracted for all the scenes. The Water Spread Areas (WSA) derived for all the scenes and their corresponding water levels are shown in Table 4.

Table 4 : Water spread areas extracted from satellite data

Date of pass	Elevation (m)	Area (Mm ²)
15-May-18	70.900	18.203
28-Mar-18	73.270	23.858
04-Mar-18	75.430	28.296
27-Dec-16	77.660	32.662
03-Jan-18	79.650	36.202
28-Nov-17	80.940	39.350
15-Feb-19	83.480	44.233
29-Dec-18	85.760	48.016

The water spread areas on selected dates of satellite pass are shown in Figure 7. The tail of the reservoir is defined by removing the river portion from extracted WSA, carefully.

11.6 Water spread area at regular interval

Water levels on the dates of pass for selected satellite data are not available at regular interval. However to get WSA values at regular interval of elevation, area-elevation curve is plotted for the reservoir and a second order polynomial has been fitted. The areas at an elevation interval of 1.0 m are computed from this best fit equation. These values are given in Table 5.

11.7 Calculation of reservoir capacity

Computation of reservoir capacities at different elevations have been derived using following formula

$$V = H / 3 * (A_1 + A_2 + \text{SQRT} (A_1 * A_2)).$$

Where V is reservoir capacity between two successive elevation of h_1 and h_2

H is the elevation difference, $H = (h_1 - h_2)$

A_1 and A_2 are areas of reservoir water spread at elevation h_1 and h_2 respectively.

The cumulative live capacities derived at different elevation have been shown in Table 5.

Table 5 : Areal extent and cumulative live storage capacity of reservoir at regular interval defined from graph

Water elevation m		Water spread area Mm ² (2017-18)	Cumulative capacity Mm ³ (2017-18)
MDDL	72.540	21.996	0.000
	73.000	22.993	10.347
	74.000	25.138	34.404
	75.000	27.252	60.592
	76.000	29.337	88.880
	77.000	31.392	119.239
	78.000	33.417	151.638
	79.000	35.412	186.047
	80.000	37.376	222.436
	81.000	39.311	260.776
	82.000	41.216	301.036
	83.000	43.091	343.186
	84.000	44.936	387.196
	85.000	46.750	433.036
	86.000	48.535	480.676
FRL	86.560	49.522	508.131

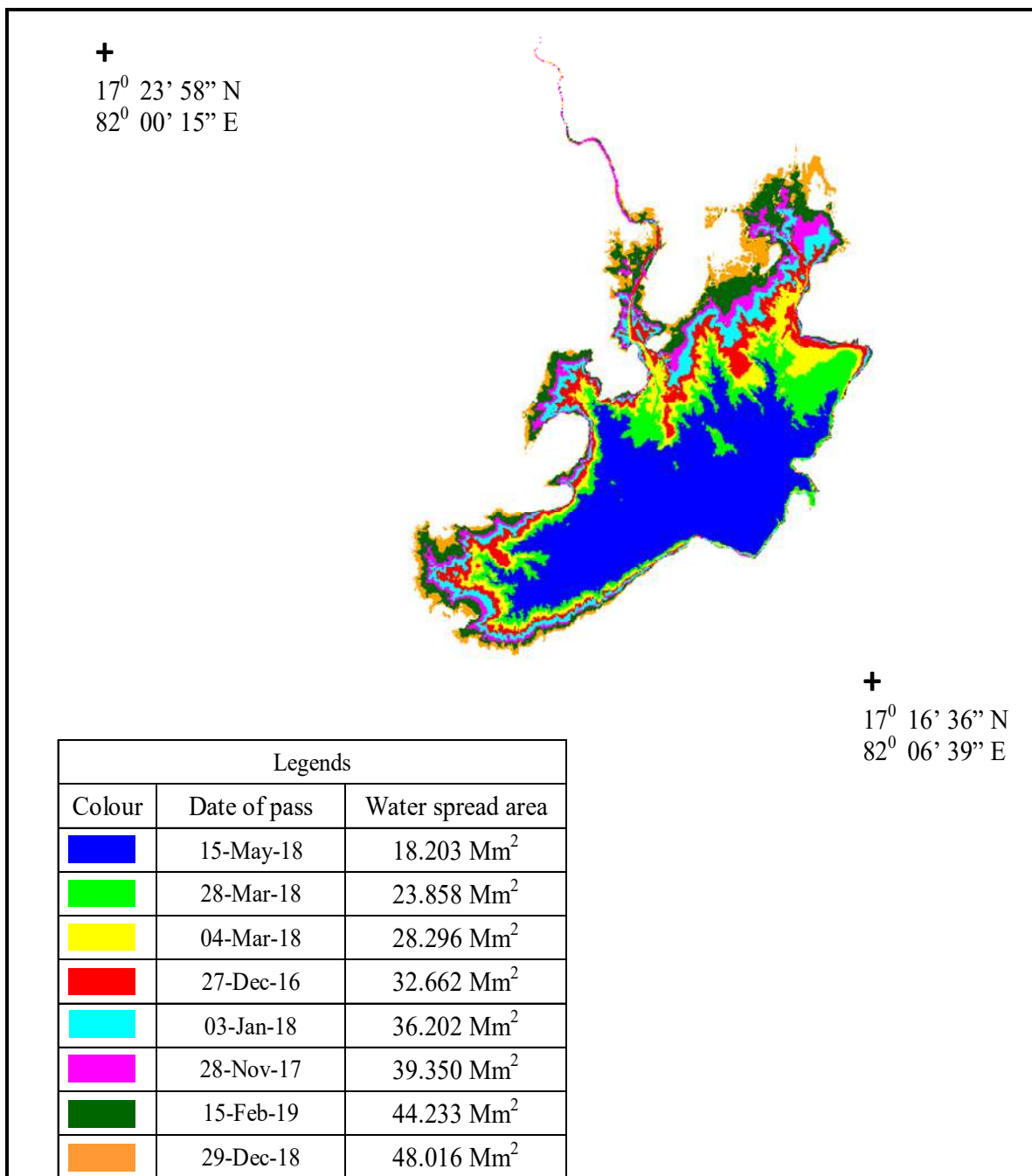


Figure 7 : Water spread areas on different dates of satellite pass

SRS elevation area curve is shown in Figure 8 and tabulated in Table 4. Elevation capacity curves is shown in Figure 9 and tabulated in Table 5. The elevation-area curve drawn through present surveys carried out for Yeleru reservoir are shown in Figure 10 which is based on Table 6. The elevation-capacity curve drawn through original and present surveys carried for the Yeleru reservoir are shown in Figure 11 and tabulated in Table 7. In Figure 12 updated SRS elevation-area-capacity curve is drawn and tabulated in Table 5.

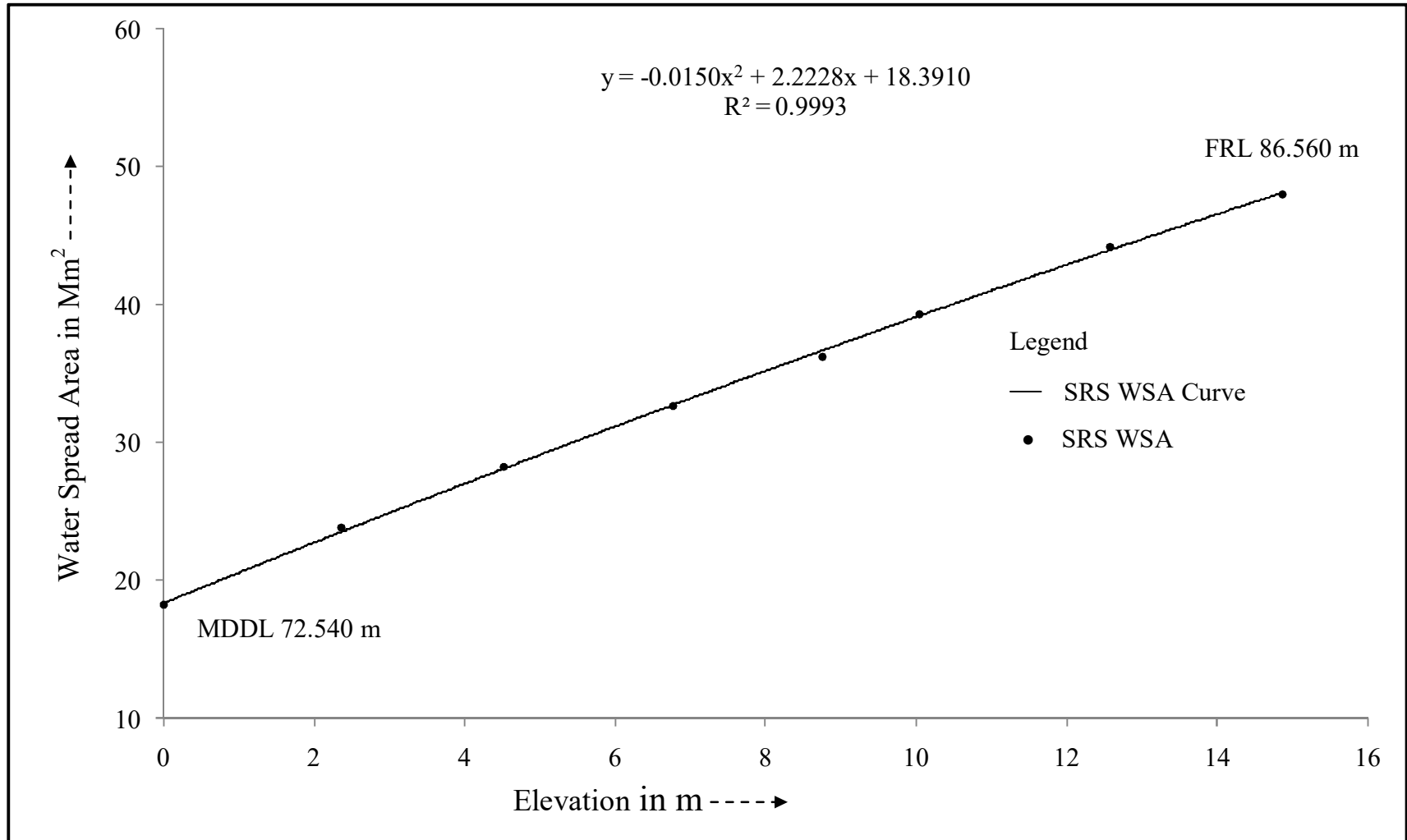


Figure 8 : SRS Elevation-Area curve for Yeleru reservoir, Andhra Pradesh

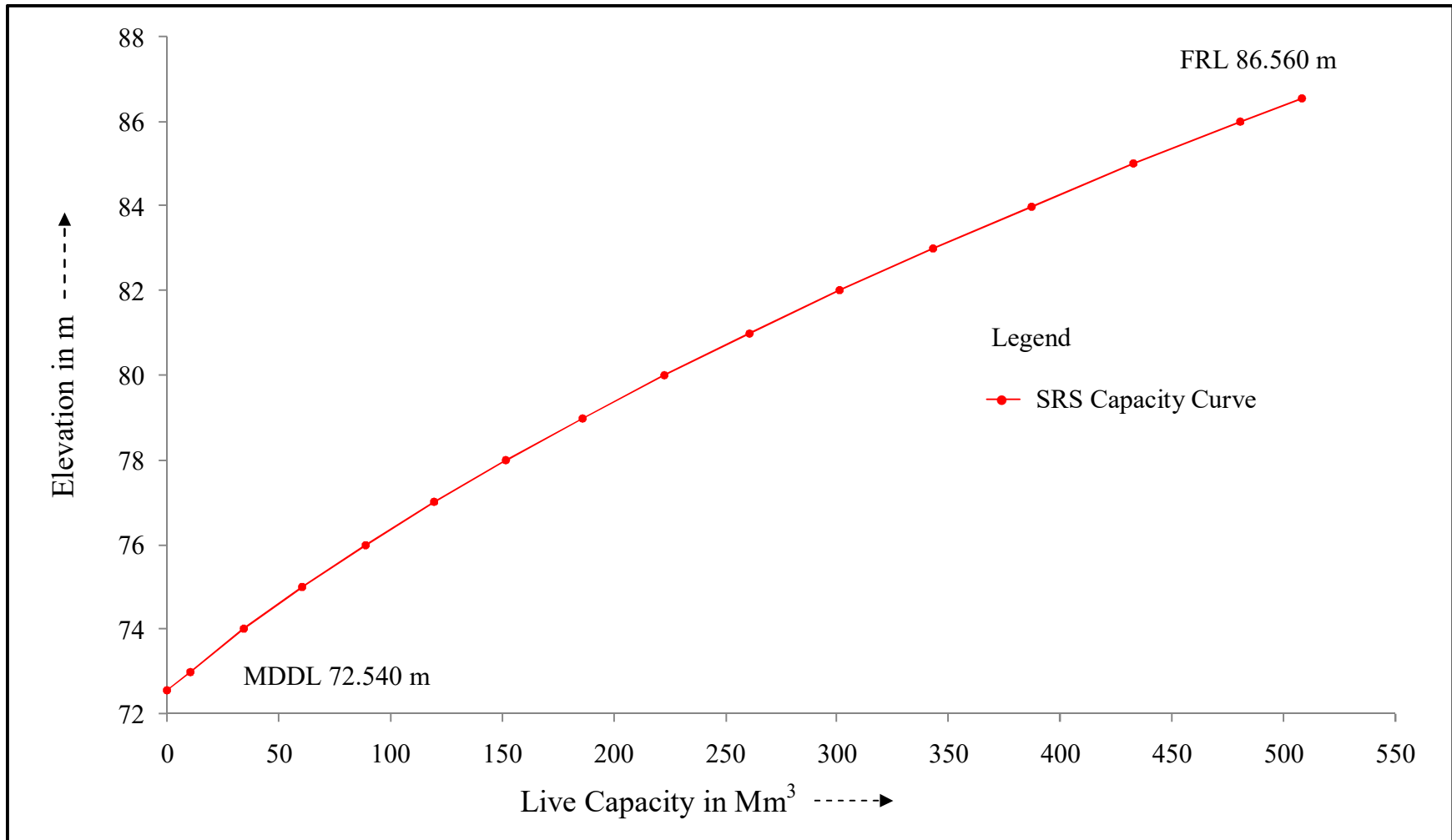


Figure 9 : SRS Elevation-Capacity curve for Yeleru reservoir, Andhra Pradesh

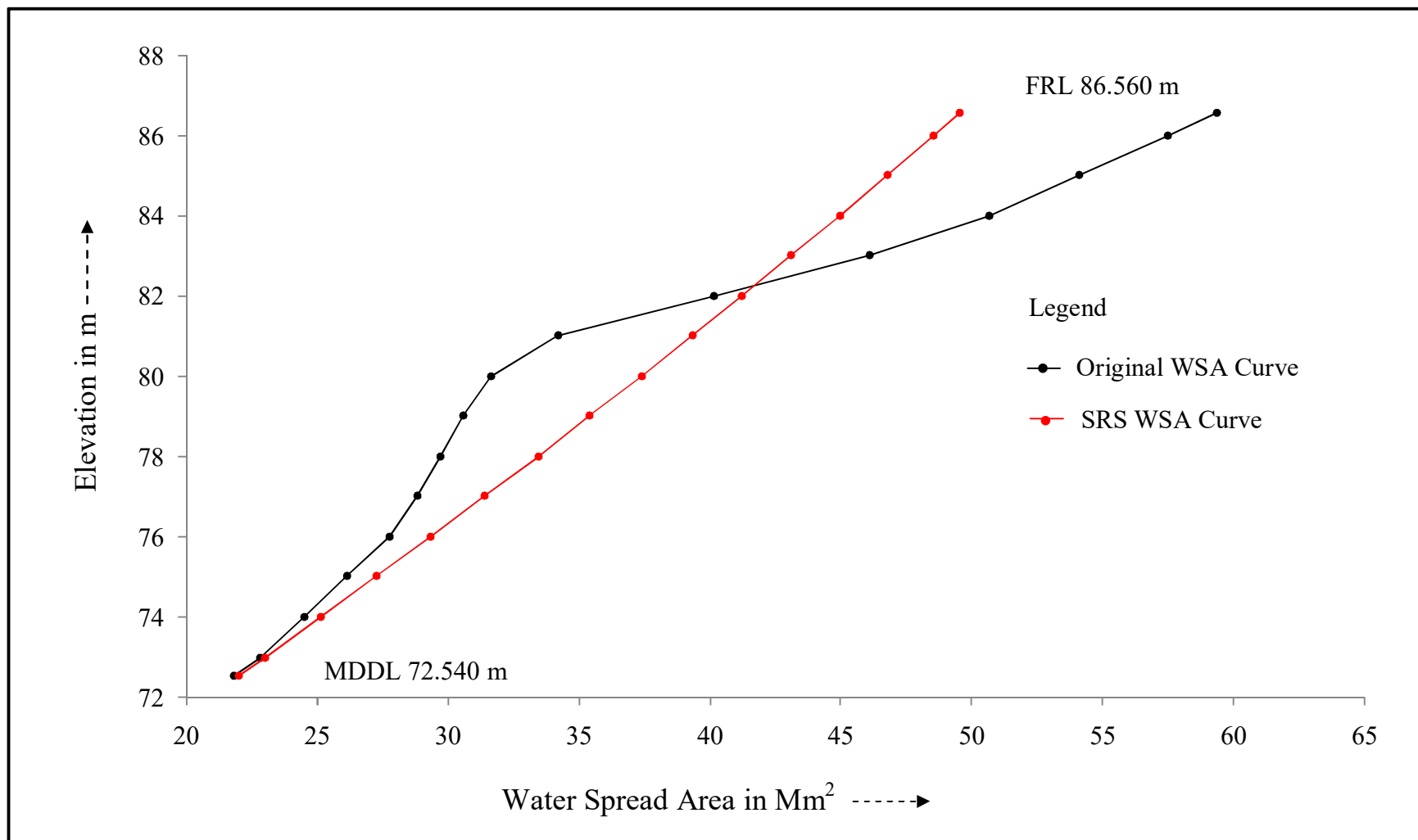


Figure 10 : Elevation - Area curve for different years for Yeleru reservoir, Andhra Pradesh

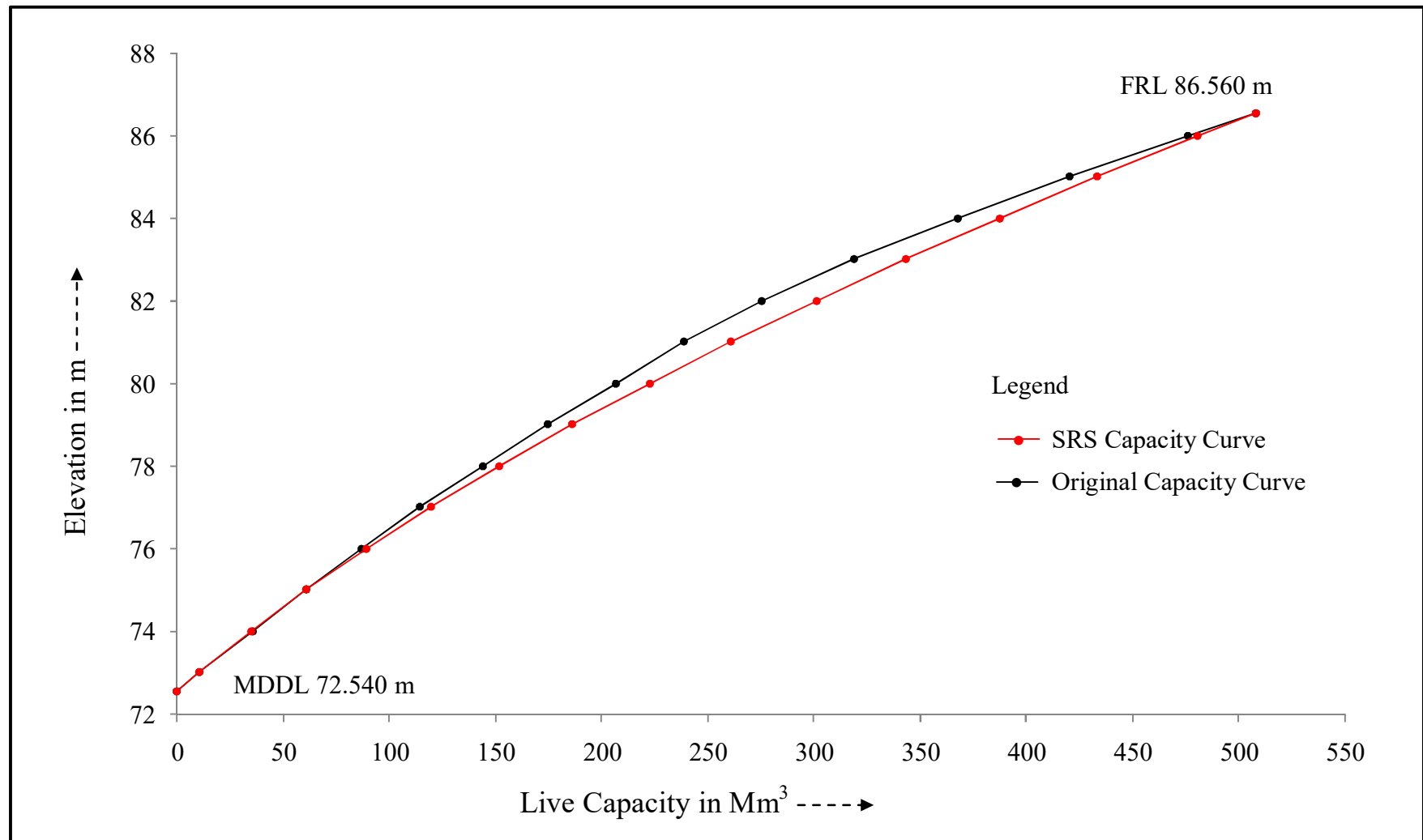


Figure 11 : Elevation - Capacity curve for different years for Yeleru reservoir, Andhra Pradesh

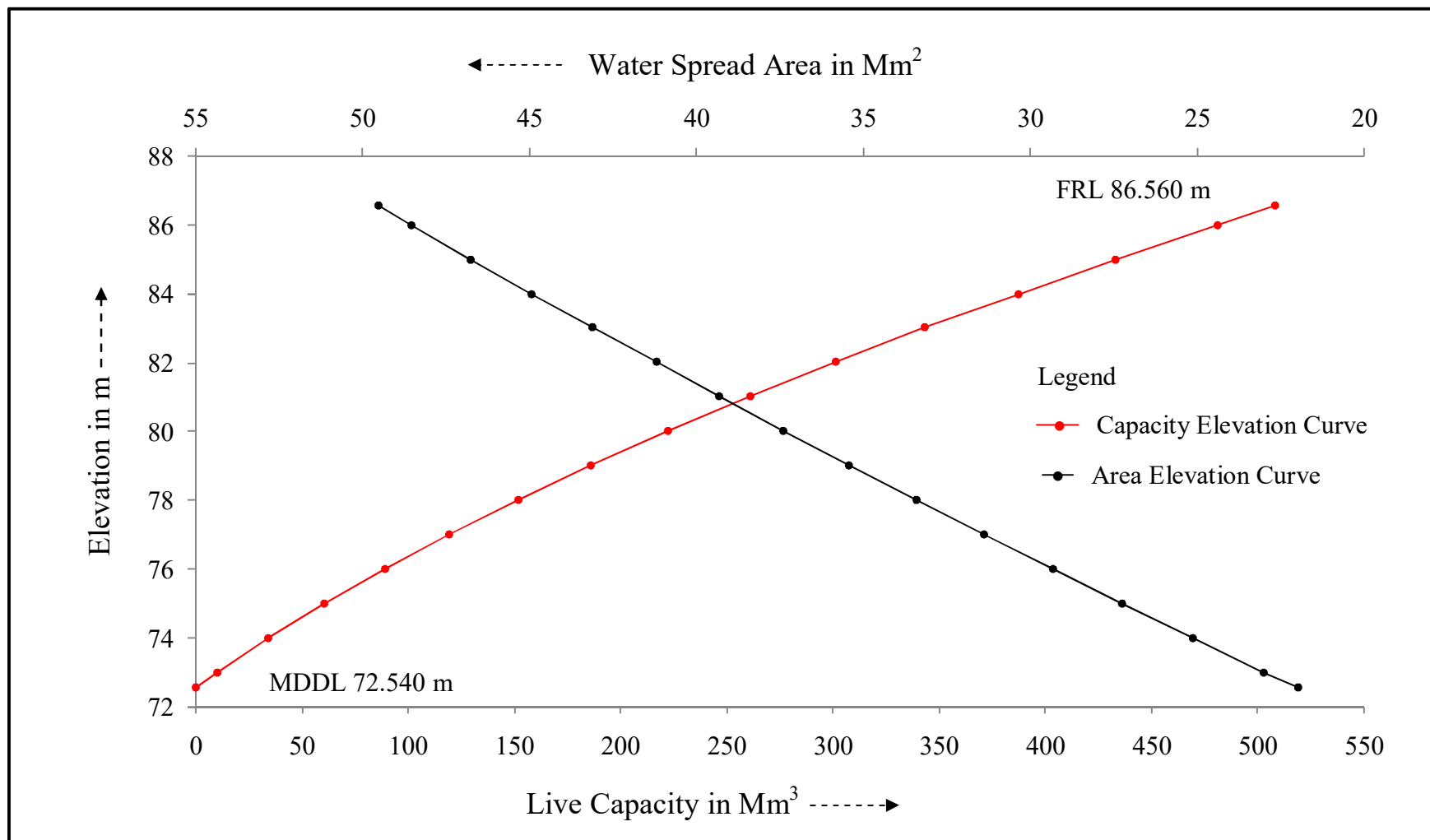


Figure 12 : Modified SRS Elevation - Area - Capacity curve for Yeleru reservoir, Andhra Pradesh

11.8 Comparison with earlier surveys

The comparison of water spread area obtained through remote sensing analysis with original surveyed data is given in Table 6.

Table 6 : Comparison of water spread areas of reservoir (Mm²)

Water elevation m		Original survey 1991	SRS survey 2017-18
MDDL	72.540	21.830	21.996
	73.000	22.781	22.993
	74.000	24.470	25.138
	75.000	26.113	27.252
	76.000	27.775	29.337
	77.000	28.813	31.392
	78.000	29.689	33.417
	79.000	30.591	35.412
	80.000	31.646	37.376
	81.000	34.166	39.311
	82.000	40.107	41.216
	83.000	46.048	43.091
	84.000	50.672	44.936
	85.000	54.080	46.750
	86.000	57.485	48.535
FRL	86.560	59.370	49.522

The comparison of present live storage capacity with original capacity is given in Table 7.

Table 7 : Comparison of live storage capacity of reservoir (Mm³)

Water elevation m		Original survey 1991	SRS survey 2017-18
MDDL	72.540	0.000	0.000
	73.000	10.297	10.347
	74.000	35.576	34.404
	75.000	61.022	60.592
	76.000	86.636	88.880
	77.000	114.520	119.239
	78.000	143.652	151.638
	79.000	174.391	186.047
	80.000	206.861	222.436
	81.000	238.399	260.776
	82.000	275.444	301.036
	83.000	318.421	343.186
	84.000	367.211	387.196
	85.000	420.151	433.036
	86.000	475.750	480.676
FRL	86.560	508.300	508.131

11.9 Field visit and ground truth

Field visit of the reservoir area has been carried out on 3rd November 2019 for ground truth verification. Some predetermined ground truth points marked on the satellite image printouts along with their latitude and longitude values have been verified, with the help of GPS (Trimble Juno) receiver. Following officers were present during this visit.

Officers from Resources Engineering Center, MERI, Nashik

- i) Shri. P. D. Kulkarni, Sectional Engineer
- ii) Shri. A. B. Dhokchaule, Junior Engineer

Team from Yeleru reservoir project

- i) Shri. V. P. R. Chowdary, Assistant Executive Engineer

Latitude and longitude values of the reservoir components have been recorded during the field visit. Reservoir levels used in the present analysis have been confirmed in field visit. The reservoir level on the day of visit was observed 86.34 m. The Photographs of ground truth scenario are shown in Annexure III.

12. Results and Discussions

The loss in live storage capacity of the reservoir in remote sensing survey (2017-2018) due to sedimentation since original survey (1991) is given in Table 8.

Table 8 : Live storage capacity loss due to sedimentation from original survey

Details	Original survey 1991	SRS survey 2006	SRS survey 2017-18
Live capacity (MCM) at FRL 86.560 m	508.300	506.254	508.131
Loss in capacity (MCM)	-	2.046	0.169
% Live capacity loss (since 1991)	-	0.403	0.033
Annual % live capacity loss	-	0.027	0.001
% Live capacity loss between two consecutive surveys (of the original capacity)	-	-	-
% Loss in live storage between the survey since impoundment	-	Error	0.033%

The following observations are recorded from the present study.

- Present live capacity (year 2017-2018) of Yeleru reservoir is found as 508.131 Mm³. Modified SRS elevation-area-capacity values are given in Table 5 and Figure 12.

13. Limitations

The sedimentation survey using Remote Sensing Technique has following limitations

- The remote sensing based capacity estimation works between the operating levels i.e. MDDL to FRL only. Thus changes can be estimated only in live capacity of reservoir.
- The cloud free satellite data throughout reservoir operation in single year is not possible. As such data from different years are selected.
- General error can creep in the identification of tail end of reservoir, particularly in the rainy season. Reservoir authorities have been consulted to remove this ambiguity.

14. Conclusions

Following conclusions can be drawn from the study:

- The live storage capacity of Yeleru reservoir is 508.131 Mm³ in year 2017-18.
- Capacity loss of 0.033 % in live storage is observed in a period of 27 years since first impounding in 1991.
- Annual live capacity loss works out to 0.001 %.
- In hydrographic survey 2007, the study was carried out from river bed level RL 47.030 m to FRL 86.560 m covering complete gross storage capacity and loss in capacity was obtained against the complete design gross storage.
- As the hydrographic survey 2007 is not accepted by field authorities till date. They have provided the design data of water spread areas and storages for present study. Hence present study deals with the comparison to design data only.
- Due to dense forest in catchment area there is no silt cover in the catchment and hence the rate of siltation is negligible.

- As per hydrographic survey 2007, the lowest image available was at RL 64.650 m but results was given from river bed level at RL 47.030 m to FRL 86.560 m. That means backward extrapolation was done from RL 64.650 m to RL 47.030 m. For 17.620 meters of storage, backward extrapolation has been done due to unavailability of images.
- It is to be mentioned that hydrographic survey is recommended.

References

CWC (2015), Compendium of silting of reservoir in India, Technical report on silting of reservoir in India, WS and RS directorate, Central Water Commission, New Delhi.

Central Water Commission, Technical reports on reservoir capacity estimation using satellite remote sensing for different reservoirs. RS Directorate, New Delhi.

R. V. Panse, R. V. Shrigiriwar, M. B. Nakil, M. M. Kulkarni, S. A. Gaikwad, (2015), Sedimentation assessment of Krishnagiri reservoir, Tamil Nadu through satellite remote sensing, Technical Report, MERI, Nashik and CWC, Delhi.

Varshney, R.S., (1997), Impact of siltation on the useful life of large reservoirs, State of art report of INCOH, No. INCOH/SAR-11/97, NIH, Roorkee.

Annexure I

Salient Features

A	Location		
	Village	:	Yeleswaram (V)
	Taluka	:	Yeleswaram
	District	:	East Godavari
	State	:	Andhra Pradesh
	Longitude	:	82 ⁰ 05' 30"
	Latitude	:	17 ⁰ 18' 00"
	River	:	Yeleru
B	Hydrology		
	Catchment area	:	2232.000 sq km
C	Masonry and Earthen Dam		
	Length of dam	:	147.000 m
	Height of the dam	:	11.500 m
D	Capacity of Dam		
	Gross storage capacity at FRL	:	682.700 Mm ³
	Dead storage capacity	:	174.400 Mm ³
	Live capacity	:	508.300 Mm ³
	Design spillway discharge capacity	:	8070.000 Cumecs
	Type of spillway	:	Ogee
	No. and Size of spillway	:	10 Nos., 12.000 m x 10.450 m
E	Reservoir Data		
	Top of dam	:	90.000 m
	Maximum water level	:	86.560 m
	Full reservoir level	:	86.560 m
	Spillway crest level	:	76.560 m
	Minimum draw down level	:	72.540 m
	Year of impounding	:	1991

Annexure II

Reservoir Levels Pertaining to Cloud Free Satellite Data

Path/Row - 103 / 60

Gross storage capacity at FRL - 682.700 Mm³

FRL - 86.560 m

Design live storage - 508.300 Mm³

MDDL - 72.540 m

Dead storage capacity - 174.400 Mm³

Date of pass	Reservoir level (m)	Capacity covered (Mm ³)
1	2	3
15-May-18	70.900	141.234
28-Mar-18	73.270	191.206
04-Mar-18	75.430	245.959
27-Dec-16	77.660	308.052
03-Jan-18	79.650	369.214
28-Nov-17	80.940	410.580
15-Feb-19	83.480	515.247
29-Dec-18	85.760	635.615
Variation in capacity		(635.615 – 141.234) = 494.381
% variation of live storage		(494.381/508.300)*100 = 97.26 %

Annexure – III

Ground Truth Scenario



Downstream side of dam



Water spread area



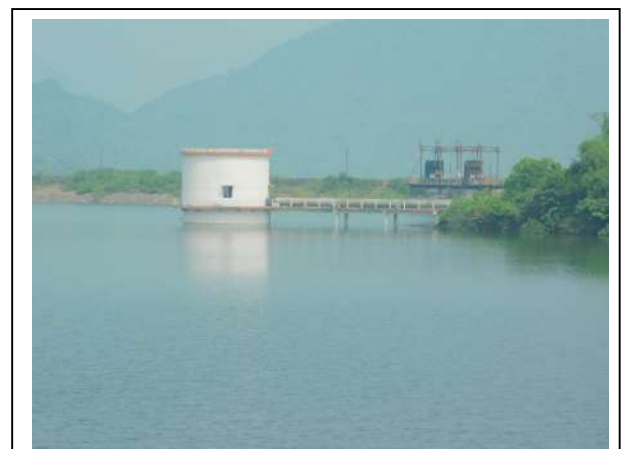
Upstream pitching



Downstream pitching



Power house



Head regulator



Water gauge level



Top bund level



Left bank canal



Hilly area



Crops nearby submergence



Ground truthing team

Contact Details

Director,
Remote Sensing Directorate,
Central Water Commission
425(N), Sewa Bhavan, RK Puram,
New Delhi- 110066.
Tel-Fax : 011-29583429.
e-mail : rsdte@nic.in.

Superintending Engineer,
Maharashtra Engineering Research Institute,
Nashik-422004.
Fax : 0253 2530764.
Phone : 0253 2534676.
Web Site: www.merinashik.org.
e-mail : eerecwr@gmail.com.

Superintending Engineer,
Irrigation Works Circle,
Dowlaiswaram
Dist. East Godavari,
Andhra Pradesh.
Tel-Fax: ----
e-mail: se_dowl@yahoo.co.in.

Executive Engineer,
Yeleru Reservoir Project Division,
Yeleswaram (V),
Dist. East Godavari,
Andhra Pradesh.
Tel-Fax: ----
e-mail: ee.yrc.ylsm@gmail.com.

Executive Engineer,
Resources Engineering Centre,
Maharashtra Engineering Research Institute,
MERI, Nashik - 422004.
Tel-Fax : 0253-2534676.
e-mail : eerecwr@gmail.com.