



पत्र संख्या: SHD/CWC/983-85


दिनांक: 15.11.2021

NOTICE INVITING QUOTATION

For and on behalf of the President of India sealed quotations are invited by the undersigned from bona fide and reputed agencies for the work: **"Aluminium Partition for Conference Hall in O/o CE (IBO), CWC, Chandigarh"** as per the following Terms and Conditions:

Terms & Conditions:

1. The rates quoted should be inclusive of all the taxes **INCLUSIVE GTS** at **BOQ** attached as **Annexure F.O.R** O/o the Chief Engineer (IBO), Central Water Commission, Block-4, 6th Floor, Kendriya Sadan, Sector-9A, Chandigarh-160017
2. The quotation superscripted with the words **"Aluminum Partition for Conference Hall"** duly signed should addressed and reach to *Superintending Engineer (Coord), O/o the Chief Engineer (IBO), Central Water Commission, Block-4, 6th Floor, Kendriya Sadan, Sector-9A, Chandigarh-160017* on or before 1500 hrs. of **25.11.2021** and will be opened on the same day at 1600 hrs in the presence of quotations or their representatives.
3. On behalf of the President of India, undersigned reserves the right to reject any or all the quotations and to alter the quantity without assigning any reasons thereof.
4. The rates shall be valid for 90 days from the date of opening of the quotation.
5. The Work should be completed within one month from the date of award. An indicative drawing is also attached for reference.
6. The payment will be made through PFMS after actual measurement of work on successful completion for which bill in triplicate shall be submitted to at Sl. No.2.
7. Rates shall be mentioned both in words and figures and all the corrections and over writings should be duly attested. In case of dispute in rates the rates quoted in words shall prevail.
8. Bidders are requested to submit their registration documents (GST Registration, PAN & other important docs.) along with quotation. Taxes as applicable will be deducted from the bill at the time of payment.
9. Any other rules of CPWD codes and its amendments as applicable will be binding on the successful bidder.
10. The Engineer-in-Charge of the work reserves the right to accept/reject the executed work according to his/her judgment. No claims will be entertained for additional/extra work unless approved by the Authority.
11. In case of variation in quantity of work done, payment shall be made on the basis of rates quoted for unit quantity.
12. In case of any dispute the decision of *Superintending Engineer (Coord), IBO, Central Water Commission, Chandigarh* shall be final and binding.


15.11.21
(प्रकाश चंद)
अधिशायी अभियंता

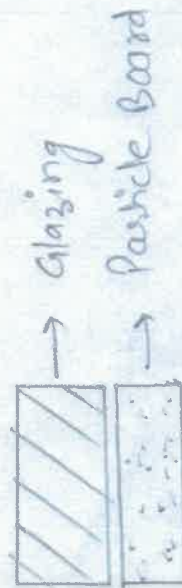
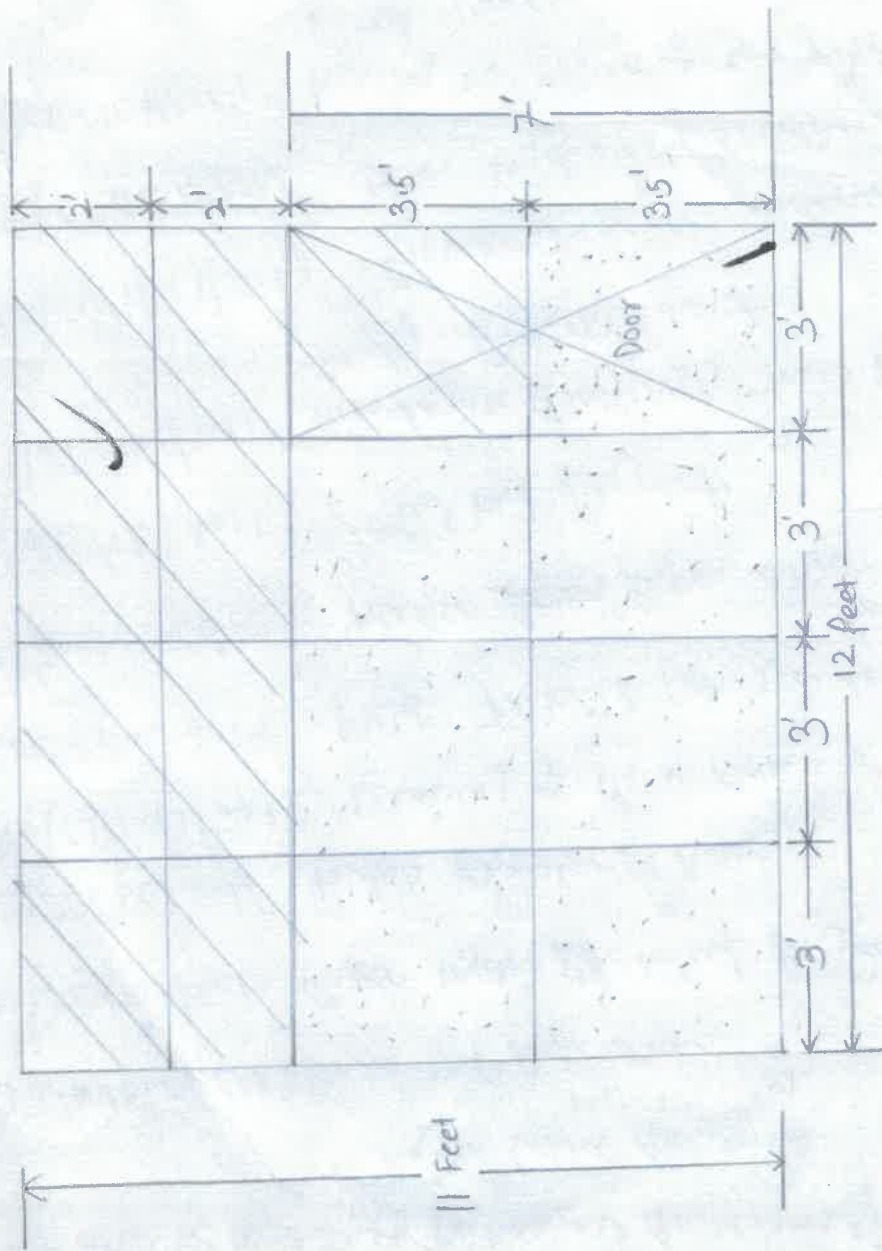
प्रतिलिपि:

1. Superintending Engineer (Coord) , IBO, CWC , Chandigarh
2. AAO, SHD,CWC, Shimla
3. Notice Board.

Name of the bidder/ bidding firm/ company:

S.No.	Description	Qty	Unit	Rate (Rs.)	Amount (Rs.)
1	Providing and fixing aluminium work for doors, windows, ventilators and partitions with extruded built up standard tubular sections/ appropriate Z sections and other sections of approved make conforming to IS: 733 and IS: 1285, fixing with dash fasteners of required dia and size, including necessary filling up the gaps at junctions, i.e. at top, bottom and sides with required EPDM rubber/ neoprene gasket etc. Aluminium sections shall be smooth, rust free, straight, mitred and jointed mechanically wherever required including cleat angle, Aluminium snap beading for glazing / paneling, C.P. brass / stainless steel screws, all complete as per architectural drawings and the directions of Engineer-in-charge. (Glazing, paneling and dash fasteners to be paid for separately) :	Quote rate at SI No. 1.2			
1.1	For fixed portion				
1.2	Polyester powder coated aluminium (minimum thickness of polyester powder coating 50 micron) Jindal Section Single Groove No. 20067 and Double Groove 20066	90.00	kg		
2	For shutters of doors, windows & ventilators including providing and fixing hinges/ pivots and making provision for fixing of fittings wherever required including the cost of EPDM rubber / neoprene gasket required (Fittings shall be paid for separately)	Quote rate at SI No. 2.1			
2.1	Polyester powder coated aluminium (minimum thickness of polyester powder coating 50 micron)	18.00	kg		
3	Providing and fixing aluminium handles, ISI marked, anodised (anodic coating not less than grade AC 10 as per IS : 1868) transparent or dyed to required colour or shade, with necessary screws etc. complete :	Quote rate at SI No. 3.1			
3.1	125 mm	2	each		
4	Providing and fixing 12 mm thick prelaminated particle board flat pressed three layer or graded wood particle board conforming to IS: 12823 Grade I Type II, in panelling fixed in aluminum doors, windows shutters and partition frames with C.P. brass / stainless steel screws etc. complete as per architectural drawings and directions of engineer-in-charge.	Quote rate at SI No. 4.1			
4.1	Pre-laminated particle board with decorative lamination on one side and balancing lamination on other side	6.83	sqm		
5	Providing and fixing glazing in aluminium door, window, ventilator shutters and partitions etc. with EPDM rubber / neoprene gasket etc. complete as per the architectural drawings and the directions of engineer-in-charge . (Cost of aluminium snap beading shall be paid in basic item):	Quote rate at SI No. 5.1			
5.1	With float glass panes of 5 mm thickness (weight not less than 12.50 kg/sqm)	5.43	sqm		
6	Providing and fixing aluminium tower bolts, ISI marked, anodised (anodic coating not less than grade AC 10 as per IS : 1868) transparent or dyed to required colour or shade, with necessary screws etc. complete :	Quote rate at SI No. 6.1			
6.1	300x10 mm	1.00	each		
7	Providing and fixing aluminium hanging floor door stopper, ISI marked, anodised (anodic coating not less than grade AC 10 as per IS : 1868)transparent or dyed to required colour and shade, with necessary screws etc. complete.	Quote rate at SI No. 7.1			
7.1	Twin rubber stopper	1.00	each		
8	Providing and fixing aluminium die cast body tubular type universal hydraulic door closer (having brand logo with ISI, IS : 3564, embossed on the body, door weight upto 35 kg and door width upto 700 mm), with necessary accessories and screws etc. complete.	1.00	each		
9	Providing and fixing bright finished 100 mm mortice lock with 6 levers without pair of handles of approved quality for aluminium door, with necessary screws etc complete as per direction of Engineer- in-charge.	1.00	each		
	Total inclusive all Taxes INCLUSIVE GST				
	GST				
	Grand Total Rs.				
	(Rupees only)				

Aluminum Partition Drawing for Conference Hall



15/11/21
Rf